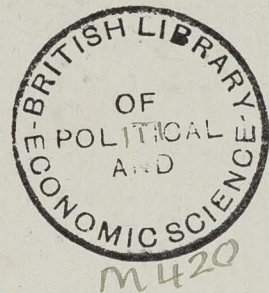




Balfour

R COLL II
B58

Battersea



July 24th

Mr F Marshall

6 hours. Q and part S.
1-42 43
3 1/2 hrs 28 Sept (rest Dalton)

14?

map revised & approved by Mr Marshall. Dec 89.

also by Mr Baxter of Battersea COS Committee & Univ Coll Oxford Mission Dec 89.

Acre Street	76	Sussex Street	90
Aegis Grove	18	Thessaly Square	88
Arden Street	7	— Terrace	89
Ascalon Street	16, 24, 27	Tidbury Street	32
Batt. Pk Rd	37	Tidemore —	31
Berwick Cottages	19	Tweed —	5
Ceylon St	10	William —	80
Cherwell St	9		
Clefton Cottages	15		
Comma Road	47		
Deadwood Rd	62		
Etruria B ^d	78		
Foot's Row	14		
Haines Street	2		
John Street	32		
Lucas Place	92		
Moat Street	1		
Mundella Road	84		
— Terrace	87		
New Cottages	36		
— Road	20, 93	[exc 2-41 1/2 1-19]	
Patience Street	55		
Porson —	51		
Power —	53		
S ^t . George's Rd	43		
Savona Place	35		
Savona Street	27		
Selden th Street	34		
Sheldrigh —	33		
Sleaford —	12		
Stondale Rd	66		
Stewart's Rd	41, 71		
Stockdale Rd	58		

manuscript 59
1-205 odd nos

Gas Works.
Water works
S.W.R. -

[ii]

^{in district}
little or no poverty with
due to improvidence

women as rule worse than men
or M sees more of them.
children going to public houses
with jugs at 10 & 11 am, for
mothers out yet up

Great difference between
the two Board Schools

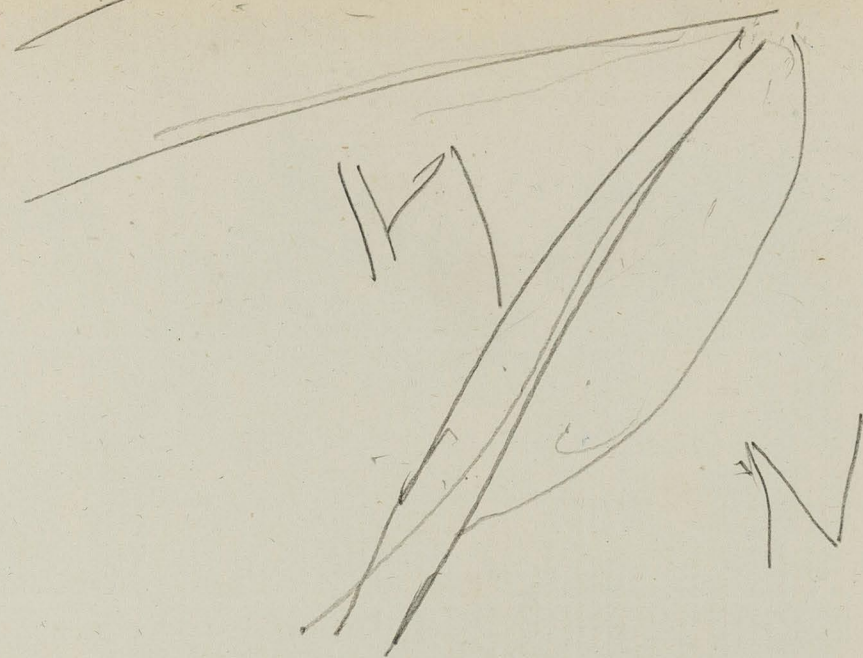
New Road alt 88 70 : ^{his} master writes himself
to parents
Sleaford Street 76 70 ^{his} master does other
things
Cepthorpe & vestryman

District. vii
^{to}
School years
formerly in New Act
12 yrs visitors

Army Pensioners

will use sent
to my suggestion

[iii]



[v]

Hopping
about Standale Rd.

women work than men
by men decent
but women often drink.

[vi]

No. Rms. Class. OCCUPATION, &c. Wife. Children. 3-13 -3 Others in Family. POSITION.

8/6
6 rooms
respectable
25/-

D 4
~~E 5~~
D 13
E 9
~~F 6~~
E 5
E 5
D 4
E 5
E 22
E 5
C 3
C 3

E 13
E 5
D 4

D 4
C 3
E 5
C 3

D 4
~~D 15~~
F 6

No. 7 24 July

Marshall.

No. Rms. Class. OCCUPATION, &c. Wife. Children. 3-13 -3 Others in Family. POSITION.

Moat Street Purple (not quite so respectable, or clean as next two streets)

1. E.5 Labourer - 3 - -
2. E.39 Labourer - - -
3. D13 Rly Porter gils - 2 1
4. 2 E.9 Blacksmith ^{SwR} - 4
5. F.6 Lighterman 43 1
6. 3 E.5 Coal porter 3
7. 2 D.4 Labourer ^{gasworks} 2 1
8. E.5 Coal porter 1
9. E.22 Costermonger ^{cart} 1 2
10. E.5 Fireman ^{gasworks} 2
11. D.4 Labourer gw. 2
12. D.3 Labourer gw 3 1
13. ^{gasworks} E.13 Rly Porter 2
14. E.5 Coal Porter gw 4
15. D.4 Labourer gw 2 1
16. 2 (39) Labourer gw 1
17. D.4 Labourer gw. 3 1
18. 2 E.3 Labourer gw ^{widow} 2
19. E.5 Fireman gw. 2 1
20. 2 D.3 Labourer gw 2
21. D.4 Carman ^{at} 5 1
22. 2 (39) potter an 1
23. F.6 Fireman gw 4 1

21
"
4 7 2
2 7 8
2 7 6
C mls

5 of these gals live in Moat Street

steps child adopted

50/-

2 Haines Street		20 Moat Street		Children.		Others in Family.		POSITION.	
No.	Rms.	Class.	OCCUPATION, &c.	Wife.	3-13	-3			
1	?	D.4	Carman Coal wharf		1			on	D4
2		D.4	Labourer gw		3	1			D3
3		F9	Engine Fitter S.W.R.		3		1	butcher	F9
4	39	F.16	Engine Driver water works		-				
5		E.5	Lighterman		1				E5
	2	E.5	Carrier C.P.		1				E5
6		F.13	Rly Guard.		2				F13
	2	D.4	Labourer gw		2	1			
7	39	E.5	Purifier gw.		-				
8		E.5	Foreman gw. (Stoker)		1				F6
		D.4	Labourer gw.		1				D3
9		D.4	Coal Porter S.W.		3				D4
10		D.13	Rly Porter		4				D13
	2	F.13	Engine Driver		4				F13
11.		D.4	Labourer gw			1			D3
12		D.4	Carman coal wharf		1			on	D4
13		D.5	Lighterman		5	1			E5
14	39	D.4	Oilman shop		-				
15	8	4.27	Publican Ho.		4			3 hands. Cr 27/11	
16	1	-	Rly Porter	S	-				
	3	(39)	Labourer			2			
17		F.7	Stone Mason		1	3		req	E7
18	39	32	No Occupation			2		Private means	
19		39.	Labourer gw.			2			

Haines Street		Children		Others in Family.		POSITION.	
No.	Rms.	Class.	OCCUPATION, &c	Wife.	3-13	-3	
20		F.13 (39)	Brakesman			2	
21		E.5	Fireman gw		5	1	
22		F.28	Reader Times		2	1	
23		F.6	Time Keeper gw		1		
	2	(E.10) (25)	Compositor			2	and on
24		E.5	Labourer gw		3		
25		D.4	Carman	ill	3		elderly man.
26		E.5	Coal porter gw		3	1	and niece
27		D.4	Labourer gw		3	2	crabs.
	3	D.4	Labourer gw		4	2	
28		D.4	Labourer gw		2		
29		(39)	Labourer gw		1		
	1	B.33		w charw.	1		bedroom.
30		D.3	Labourer gw		4	1	
			gasworks				
43		(39)	Stoker gw			2	
	2	E.3	Labourer gw		2		
44		E.3	Labourer gw		1	2	
	2	E.7	Carpenter		1	2	
45		(39)	Labourer gw		-		
46		D.4	Labourer gw		2	1	
	2	E.3	Labourer gw		2		
47		F.6	Stoker gw		1		
48		E.13	Rly guard gw		2	1	
	2	D.3	Labourer gw		3	1	

4 **Hemas Street (contd)**

No.	Rms.	Class.	OCCUPATION, &c.	Wife.	Children.		Others in Family.	POSITION.
					3-13	-3		
49		E 9	Hammerman (stake forger)		1			
	2	D 3	Labourer		3			
50		D 4	Labourer		2			
	2	F 18	Purifier		1	2		
51		F 6	Foreman		1		1	Budget 2/6.
52		F 9	Fitter		1			
53		E 7	Bricklayer		5	1		or
	2	D 4	Labourer		1			
54		E 5	Stoker gw		1	1		
	2	E 5	Stoker gw.		2	2		
55		E 23	General Dealer		2	1		
	1	A B 1	Loafer		1			55a looks after child. wood work. live at 49 S. Lanes St.
56 & 57		(39)	Shop. general	wife keeps shop.	-	-		
58	3	E 24	Shop general.	wife keeps hat bags	3	1		
	4	E 8	Cooper		4	1	1	done by Smith's paper by
59		F 5	Stoker gw.		2	1		2 stepd.
60		(39)	Rly Porter		-	-		
61		(39)	Rly Porter		-	-		
62		(39)	Foreman		-	-		
63		(39)	Labourer			1		
64		D 4	Labourer		1			
		E 5	Packer. (cotes)		1			
		A	B	C	D	E	F	G
		1	1	7	14	20	6	1
						19		

50

Tweed Street. *by respect* **as Hemes St**

No.	Rms.	Class.	OCCUPATION, &c.	Wife.	Children		Others in Family.	POSITION.
					3-13	-3		
1		E 5	Gas Stoker		3	2		
	2	D 4	Labourer gw.		1			
2		E 13	Rly guard sw		-			
3		(39)	Gas Stoker			1		
4		E 13	Rly guard		4	2		win
5	2	(39)	Labourer gw			1		
5		E 3	Labourer		2	2		
6		(39)	Labourer		-			
7		G 32	no occ. found		-			
8		D 4	Labourer		3	2	1	
	2	E 6	Gas Stoker		1	1		
9		E 5	Coal Porter		1			
10		(39)	Labourer		-			
11		F 13	Rly guard.		3	1	1 (in court)	
	2	(39)	Stoker.			1		works legal
12		E 13	Rly porter		1	1		
13		F 5	Cooper.		1			
14		D 4	Carman		1			
	2	F 15	Cellarman.		4			
15		E 5	Timber porter		2		1	
16		E 7	Caplaster		2			
17		E 5	Carman		1			
18		(39)	Widow	Widow	-			lets doors to single men
19		E 12	Distiller	lets	1			

6 Tweed Street (cont'd)

No.	Rms.	Class.	OCCUPATION, &c.	Wife.	Children.		Others in Family.	POSITION.
					3-13	-3		
20		(39) 30	House Decorator		-			in
21		E.5	Labourer water whs		2	1		see more of the family works for a foreman.
22		F.7 30-35	"Builder"		1	1		
23	2	(E.5)	Carmen			1		
23	4+k	C.33		W Washed clothes	3			lets 2 rooms to single men.
24		D.4	Carmen		4			
		(39)	Rly Porter		-	2		
25		E.5	Stoker gw		2			
	2	E.3	Labourer gw		1			
26		(39)	Carmen		-			
27		E.7 30-	Carpenter		3			
28		(39) (32)	no occ.		-			
29		F.13	Engine Driver SWR		2	1		
30		E.5	Coal Porter		2	1		
		F.6	Gas Stoker		2			

These men do not work for themselves
By Stokers get longer hours better wages than gas whs

C 3
D 4
E 15
F 13
G 13

Arden Street ^{as basement 10 rooms} ^{in tenements 15-} ^{as Moat Street respectable. nice good POSITION.} 7

No.	Rms.	Class.	OCCUPATION, &c.	Wife.	Children.		Others in Family.	POSITION.
					3-13	-3		
1		F.7 (24)	Stonemason	general Shop	2	1		1 shy
2		D.4	Labourer	gw	1	1		
	2	E.3	Labourer	gw	2			
3		C.3	General Labourer		1			Does anything R. Catholic
4		E.5	Labourer	gw	4	3		
5		D.4	Labourer	gw	1	1		
6		D.14 21-	Horse keeper		1			
7		E.7 30-	Bricklayer		1			
8		F.18 35	Foreman	gw	1			
9		D.4	Labourer	gw	3	2		
	2	E.3	Labourer	gw	3			
10		D.4	Labourer	gw	3	2		
11	2	E.5 25-	Coal Porter		2			
		E.5	Dustman	paint	2			
12		D.4	Labourer		3	1		1 missing 3/.
	2	(39)	Stoker	gw	4	2		
13		D.4 30-	Carmen		3	2		
14		E.5	Lighterman		3	1		
15		C.3	Labourer	gw	3			Long out of work ill. now in work.
15		F.6	Foreman		3	2		
15a		E.7 30-	Carpenter		1			
	2	E.7 30-	Carpenter		3	2		
	2	E.5	Labourer	gw	1			

46

Arden St (cont'd) Basements begun in these houses.

No.	Rms.	Class.	OCCUPATION, &c.	Wife.	Children.		Others in Family.	POSITION.
					3-13	-3		
16	3	D.4	Labourer ^{gw}	washes drinks	4	1		
	3	E.5	Coal Porter		3	2	1	
	2	D.15	Milkman		4	2	1 dead	crowded.
17	1 st floor top empty	E.5	Coalporter ^{gw}		2	2	1	
18	3	C.3	Labourer		2	1		
	3	E.7	Bricklayer		1	2		
	2	E.5	Coal Porter		2	1	1	
19	2 floors empty	E.3	Labourer ^{gw}		2		1	
20	3	D.4	Labourer ^{gw}		2	1		
	3	D.13	Rly Porter		2			
	2	E.4	Labourer ^{gw}			2		
21	2	D.4	Labourer		1			
	6	D.3	Bargebuilder			2		
22	6	D.3	Labourer		5			
	2	E.5	Stoker		2	1		
23	6	F.5	Stoker		4	1		
		(39) ²⁵	Genl. Labourer gas works			2		
24	3	(39)		W	—		2 or 3	supplied by sons.
25		E.5 28	Lockkeeper Conventry		3	1		
		D.3	Labourer ^{gw}		3			
		E.3	Labourer ^{gw}		2			
26		D.4	Labourer ^{gw}		4	1		
	3	(39)	Labourer		—			
27	3 not empty	E.7 30/1	Carpenter		2			

Rent houses 12/6 by 2 3/6

Arden St cont'd

No.	Rms.	Class.	OCCUPATION, &c.	Wife.	Children		Others in Family.	POSITION.
					3-13	-3		
28		E.3	Labourer ^{pw}		2			
		D.4	Labourer ^{gw}		1			

C 10 D 14 E 15 F 4 43

Cherwell Street (no basements)

1	E.19 30	Optical Case maker	helps		4		1.	works at home 400 or 500 odd hours a week
2	E.19	Optical Case maker	—		1		"	"
3	(39) ⁸	Barge Builder						
4	D.4	Labourer ^{gw}			5			
5	D.3	Labourer ^{gw}			4	2		
6	E.7	Carpenter			1			
	C.31	no occ.	washes		2			ill.
7	D.4	Labourer			3	2		
8	E.13	Rly Porter			2	1		
	D.4	Labourer			5			

107

as most street

poor
etc.

C 2 D 3 E 4 9

Ceylon Street (best)		Temp Children.		as 30/3		POSITION.	
No.	Rms.	Class.	OCCUPATION, &c.	Wife.	Children.	Others in Family.	POSITION.
1	10+E	(39) 30/-	Potter (Drafter)	-	-	-	E10
3	2	(39) 15/- Stand	Waiter	-	1	-	F18
5	30/-	F.18	Foreman sw	1	-	-	F17
7	30/-	F.18	Butler	1	-	-	E7
9	E.7	30/-	Carmen	-	-	-	B33
11	E.7	30/-	Carpenter	2	-	-	D18
13	2	D.17	Mariner common sailor	W Charms DCOR	1	1	E19
15	E.19	30/-	Watchmaker	3	-	-	E8
17	E.8	30/-	Joiner	3	1	1	E13
19	2	E.13	Foreman SWR	1	-	-	D33
21	E.33	comp	Widow	W lets some temp	-	-	E7
23	E.7	30/-	Stone Mason	4	-	-	D33
25	4	D.33		W washes & char.	3	1 3/-	E10
27	2	E.10	Silver Polisher to silver smith	1	1	-	E13
29	4	E.13	Brakeman	1	-	-	F7
31	2	(39)	Labourer sw	-	1	-	E5
33	2	(39)	Stoker	-	-	-	D32
35	2	(39)	Stoker	-	-	-	E9
37	F.7	30/-	Carpenter	3	-	-	Shop 56 Hans St. children employ for shop
39	E.5	28/-	Carmen	2	2	-	R.C. person
41	2	D.32	no occ	Washes	3	-	req
43	E.9		Lamp maker	3	1	-	
45	(39)		Coal Porter	-	2	-	

Ceylon Street (cont)		Children		Others in Family.		POSITION.	
No.	Rms.	Class.	OCCUPATION, &c	Wife.	3-13	-3	POSITION.
6	E.5		Labourer sw	-	1	-	girl in school
8	2	F.9	Labourer sw	-	-	2	
10	4	F.9	Boiler maker swr	-	1	-	
12	2	E.12	Rly Porter	-	1	2	
14	4	E.12	Brewer Lin.	-	1	-	
16	2	E.5	Stoker	-	2	-	
18	1	F.9	Moulder S.W.R	-	1	-	
20	2	25/-	Messenger Westland Office	-	-	-	
22	4	D.4	Labourer	-	1	-	
24	4	E.13	Rly Porter	-	2	1	
26	2	E.13	Rly Porter	-	2	1	
28	4	E.9	Mould-maker	-	4	2	
30	2	E.5	Labourer	-	2	2	
32	2	E.30	Plasterer	-	3	1	
34	2	D.4	Carmen	-	1	1	
36	1	39	Mariner	-	-	2	
38	4	E.7	Painter for miller	-	1	-	
40	2	F.9	Moulder	-	1	1	
42	4	E.28	Clerk City	-	2	1	
44	2	39	Labourer	-	-	2	
46	2	39	Blacksmith	-	-	-	works for himself
48	E.5	25/-	Lightman	-	3	-	
50	2	39	Moulder SWR	-	-	-	
52	E.5		Carmen	-	1	-	
54	E.13		Stoker SWR	-	1	-	
56	39		no occ	-	-	-	

35
38
42
44
46
48
50
52
54
56
58

64

12 Sheaford Street

No.	Rms.	Class.	A. houses for 2 families		Wife.	Children.		Others in Family.	POSITION.
			Occupation, &c.	3-13		-3			
1A	4	F.9	Moulder			1	1		
	4	F.13	Rly Guard			1	1		
3A	4	E.5	Lighterman			4			
5A	4	D.4	Corman			4	1	1	
	4	E.5	Coalporter			3			
7A	4	D.4	Coalporter			4	1	1	
	4	E.5	Gate keeper (London estate)			1	1		
9A	4	39	Bricklayer			2	2		
	4	E.9	Blacksmith			3	1		
11A		F.19	Tailor	machine		4	2		works at home. no hands.
3		F.18	Sweep			2	1		master sweep.
5		39	Shoemaker			-			works for himself
7		39	Coalporter			-			
9		39	Engine Driver	SWR.		-			
11		39	Pensioner			-			
13		D.4	Corman			3	1		
15		D.4	Labourer ww			1	1		
17		D.4	Labourer ww			2	1		
19		D.4	Hydraulic Diver (manholes)			2			
21		D.4	Labourer ww			1			
23		E.5	Coal Porter			2			
25		F.13	Engine Driver	SWR		1			
27		39	Engine Driver	SWR		-			
29		39	no occ.			-			children kept
31		F.6	Foreman S.W.R.			2	1	1	

Purple (36)

Sheaford Street (cont)

No.	Rms.	Class.	Occupation, &c.	Wife.	Children		Others in Family.	POSITION.	
					3-13	-3			
33		E.8	Bagbuilder			1	1		
35		E.13	Stoker SWR.			2			
37		E.5	Coal Porter			4	1	1	
39		39	Carpenter			-			
41		F.9	Engineer			1			
43		E.4	Cabman			1		owns horse & cab	
Sheaford St school.									
18		F.9	Engineer SWR			4	2		
20		D.33		W		1			
22		D.4	Labourer ww	washes		2			
24		E.3	Labourer ww			1	2		
26		E.5	Stoker gw			3	1		
28		E.3	Labourer gw			1			
30		E.5	Coal porter			3	2		
32		E.5	Coal porter			4			
34		D.4	Labourer			2			
36		D.4	Labourer ww	washes badlot		3		wash	
38		C.22	Handler flowers			1			
40		E.5	Corman			2	1		
42		D.4	Labourer gw			3	2	1	
44		D.3	Labourer gw			4			
46		39	Signaller SWR			-			
48		D.4	Labourer gw			4	1	1	
50		F.9	Iron turner	Danham		4		incl nephews & niece children of admi.	
52		D.4	Labourer ww			1			

14 Sheaford Street (contd.)

Foots Row

Clepton Cottages under S.W.R.

No.	Rms.	Class.	OCCUPATION, &c.	Wife.	Children. 3-13	Others in Family.	POSITION.
-----	------	--------	-----------------	-------	-------------------	-------------------------	-----------

54	D.4		Labourer gw		3		
56	D.4		Labourer gw		1	1	
58	D.4		Labourer gw		4	2	
60	E.5	30.	Carmen		2		
62	D.5		Labourer gw		4	1	

4 rooms
poor.
7/6 a week
25/.

106

B C D E F
5 17 134 9

One large garden.

Foots Row Purple small houses (2 rooms)

1	D.13		Ry Porter		3	1	
2	D.4	21.	Labourer for engine driver. SWR.		1		
3	E.22	30.	Hawker		2	2	own property
4	39			W widow	-		
5	D.3	21.	Labourer SWR		3	2	very poor
6	39		no occ. superannuated SWR. widow				

22/1 C D E F
B T 24 2

W

9

45

Purple

36

No.	Rms.	Class.	OCCUPATION, &c.	Wife.	Children 3-13	Others in Family.	POSITION.
-----	------	--------	-----------------	-------	------------------	-------------------------	-----------

1	D.4		Labourer ww.		3	1	
2	F.13	35.	Engine Driver SWR		3		
3	E.5	30.	Plate Layer		3	1	
4	39	30.	Iron Plate Works in shed.		-		
5	F.13		Engine Driver		2		
6	E.13		Engine Driver		2		
Donee Cottage	3		39 Labourer SWR		-		
	3	D.4	Labourer SWR		2	1	

4 rooms
7/6.

D 2 F
2 2 2 = 6

15

16 Little Cross Street

Purple

No.	Rms.	Class.	OCCUPATION, &c.	Wife	Children.		Others in Family.	POSITION.
					3-13	-3		
1		D. 4	Labourer ww		4			
2	3	E. 8301	Wheelwright		3	1		
	2	E 3	Labourer ww		2			
3	3	D. 4	Labourer SWR		3			
	2	E 3	Labourer SWR		3	1	1	
4	3	E 10A 28	Glass blower		1	1		
	2	C 321	Bricklayer Labourer		2	1		
5		E. 8 801	Carrage Painter SWR		4			
		D 18	Sweep		1	1		for himself.
6		39		W			3	children by her.
7		D. 4	Labourer ww		3	1		
8		E 15 301	Walter at rest.		1			
9		39	Labourer SW		-			
10		D 13	Porter		3	1		
		D 3	Labourer		2			
11		F 9	Spring maker SWR.		3	1		
		D 4	Labourer ww		2			
12		E 5	Stoker		1	1		
13	3	F 9	Spring maker SWR		2			
14	2	E. 11 25	Tailor		2	1		goes out.
14	3	E 5	Flusher		1	2		
	2	D 4	Flusher		1	1		
15		D 13 28	Shunter SWR		2			
16		D 13	Stoker SWR		5	1		
17		D. 4	Labourer SWR		4	1		

36

17 Little Cross Street

Ascalon

No.	Rms.	Class.	OCCUPATION, &c.	Wife.	Children		Others in Family.	POSITION.	
					3-13	-3			
		E. 13	Porter		1	2			
18		D. 4	Labourer SWR		2				
19		39	Labourer SWR		-				
		B 33 101		W Char.	3		1	girl char.	
20		E. 7 301	Bricklayer		5	1			
21		F 25	Gen Shop & Dairy	keeper	4			employ boy & one young son help them.	
			6 rooms.						
			12/6. fan houses						
			20-25.						
					B	C	D	E	F
					1	5	11	9	4
					5	11	7		
									28
									2
									pp

20

18 Aegis Grove. (4 rooms)

No.	Rms.	Class.	Occupation, &c.	Wife.	Children.		Others in Family.	Position.
					3-13	-3		
1	2	E 5	Coal Porter		1			
2	2	C. 7	Painter		4			
2		39	Wooce		-			
3		E 5 30	Carman		3			
4		E 9 30	Iron Plate Worker		2			
5		D. 4 25	Labourer on Road - Paint		2			
6		E 8	Labourer		1			
	2	B. 33		W char	3			
7		B. 33		W char	3	2		
8		F. 13 25	Rly Porter freeman		2	3		
9	2	D. 4	Labourer gw		1	1		
	2	E. 5	Gas Stoker		2			
10		E. 5	Messenger gw		2	1		
11		D. 3	Labourer ww		3	1		
12		39	Labourer gw		-			
13		D. 4	Labourer ww		2	2		
14	2	D. 4	Labourer sw R		3	1		
	2	D. 4	Labourer ww		1	2		
15		39 25	House decorator		2	1		
16		D. 4	Labourer ww		1	1		
17	2	P. 9 27	Striker sw R		3	1		
	2	D. 4	Labourer sw R		3			
18		D. 30	Carman		5	2		
19		39	Labourer ww		-			
20		D. 4	Labourer gw		3	1		

Blue
36

fine downcast
all at
15 months from
over

Aegis Grove.

No.	Rms.	Class.	Occupation, &c.	Wife.	Children.		Others in Family.	Position.
					3-13	-3		
21		D. 4	Labourer gw		3	2		
22	2	C. 7	Painter		4	1	1	
	2	39	Labourer gw		2	2		
23	2	D. 12 25	Baker journeyman		4			
	2	E. 7	Wattle Mason		1	2		
24		39	Labourer gw		1	1		
25		D. 4	Coal Porter gw		3	1		
Berwick Cottages (opp to back of Aegis Grove)								
1	5	D. 4	Labourer ww		1			
2	1	F. 13 30-5	Foreman gw		1			miscellaneous
	2	39	Labourer gw			1		
	2	E. 8 6	Wood Turner for firm		1	2		
3	4	E. 7	Carpenter		1			
	1	B. 33		Deserted washhouse	2			
4		E. 5	Stoker gw		3			
5		D. 4	Labourer sw		1			
		E. 12 28	Brewer [dim]		3			
6	2	D. 4	Labourer ww		4	1		
	2	39 28	Hammerman forge work			1		
		39	Cabman			1		hires cab.
7		E. 9 30	Blacksmith [dim]		2			
8								

Purple
36

65
post
4 rooms + kitchen
8/6
20-25

19

as Aegis Grove
16

No.	Rms.	Class.	OCCUPATION, &C.	Wife.	Children.		Others in Family.	POSITION.
					3-13	-3		
119		F 25	Dairyman <i>shop</i>	<i>keeps shop</i>	4	2		<i>buys milk. employ. 2 or 3 men.</i>
121	3	39	General Dealer			1		<i>has cart.</i>
	2	E 13	Engine Driver <i>Sw R</i>		2	2		
123		F 5	Carmen	<i>wife keeps shop. Sw R</i>	4	2		
125		F 27	Beer house		1			
127		39	Butcher		-			<i>employ 2 men.</i>
129		D 4	Labourer gw		3	2		
131		39	Bricklayer		-			
133		39	Fitter SWR		-			
135		E 7	Bricklayer		4			
	2	E 5 25	Chemical Works <i>at Thurston</i>		1			
137		E 5 25	Engineer's Labourer <i>SW R</i>		1	1		
139		E 7	Slater		2	1		
141		B 9 35	Engineer (10)		1			
143		39	Engineer w		-			
145		39	C	W	-		2	<i>from up. shop shop</i>
147		E 9 35	Iron moulder.		3	1		
149		39	Blacksmith <i>in forge. w</i>		-			
151		39	Flusher		-			
153		E 37		W	1			<i>kept by rels.</i>
155		E 30	Stone Mason		3	1		
157		39	Dairyman		-			<i>3 or 4 carts.</i>
159		39	Labourer ww		*	1		
161		-	emp					
163		F 9	Engine fitter <i>Sw R</i>		3			

No.	Rms.	Class.	OCCUPATION, &C.	Wife.	Children		Others in Family.	POSITION.
					3-13	-3		
165		D 4	Labourer gw		1	2		
167		E 5 30	Carmen		1	1	1	
169			Carpenter		-			
171			emp					<i>migrations to emp's houses.</i>
173		B 33		W <i>char. sw R</i>	2			
175			Stone mason		-			
177			Baker <i>shop.</i>			1		<i>employ 1 man.</i>
179			emp					
<i>Ceylon Cottages</i>								
	3	D 4	Labourer <i>SW R</i>		1	1		
	2	D 4	Labourer <i>SW R</i>		3			
120		?	Corn handler		-			<i>man & wife keep shop. real canaries. (30 last year. fair).</i>
122		D 24	General Shop <i>small sweet</i>		2			
124			Beer house	Beer <i>ho</i>	-			<i>keeps potatoes.</i>
126		F 25	Baker <i>own shop</i>		3	1		<i>emp. 2 men.</i>
128		?	Gen. Shop		-			
130			news agent		-			
132			Fishmonger		-			
134		F 9 35	Hammerman		1	1		<i>1 very grand child. 10 a scamp.</i>
136		E 24	Green grocer		2	2		
138			Cats meatman		-			<i>pony & trap.</i>
140		F 25	Bootmaker <i>shop.</i>		3	2		<i>2 or 3 men a day</i>
142			Laundry	W <i>laundry</i>	-			<i>employ hand 3 or 4</i>

No.	Rms.	Class.	OCCUPATION, &c.	Wife.	Children.		Others in Family.	POSITION.
					3-13	-3		
144			marine store	-	-	-		
146			Whipmaker	-	-	-		
148			gen. shop	-	-	-		
150 & 2	F25		oil & colours	-	3	-		employ 2 or 3
154			W Gen Shop	-	-	-		
156			empty	-	-	-		
158			gen shop	-	-	-		
160	E 32		no. occ. old.	-	1	-		
162			medical instit. caretaker	-	-	-		
164	F 9		engine yard SWR	-	3	-		
166	D 24		W Grocer	-	5	-		boy of 12 helps
168	1		H Labourer SWR	-	2	1		
	3	B 4	Labourer WW	-	2	1		
170	3		Printer works here	-	2	1		employ 2 or 3
	2	E 5	Carpenter	-	1	1		
172			Conductor shop	-	-	-		
174	30/-		hawker grocer	-	-	-		
176	30/-		Tin Plate worker	-	-	-		
178	E 18		Liberal Club Steward and free refreshments	-	1	-		
180	F 25		Fishmonger shop	-	1	1		employ 2 or 3
182	F 25		Butcher	-	4	-		employ 2 or 3
184	E 28 26/-		Traveller sweets	-	3	1		
186			Newsagent	-	-	-		
188			Marine store	-	-	-		

28

No.	Rms.	Class.	OCCUPATION, &c.	Wife.	Children		Others in Family.	POSITION.
					3-13	-3		

Small shops
12/6 about
6 rooms
at 30

B C D E F
1 5 16 12

34

pk.

24 (Cross) Street
(Ascalon)

No.	Rms.	Class.	OCCUPATION, &C.	Wife.	Children. 3-13	Others in Family	as little cross Street but a little better in pos POSITION.
4	D4		Labourer ww		5	1	
5	2	D37		W	1		part supported?
	2	E58	Carrman		2		
6	3	E88	Signal fitter SWR		4		
	2	E130	Stoker SWR		5	1	2 step child.
7	3	D4	Labourer gw		2		
	2	D4	Labourer ww		2		step ch.
8		E13	Shunter		1		
9			no. occ. old		-		helped.
10		E180	Farrier		4		
11	2	D4	Labourer gw		1		
	2	D4	Labourer gw		2		
12	3	E44	Boob maker works away		4	1	
	2	E13	Rly P		2	1	
13		D4	L. ww		2		
14		E13	Foreman SWR		1		all 3 lodger
15				W Chas lodger	-		
16	3	E530	Carrman		2	1	
	2	E18	Dog keeper Dog station		2		
17	3	F13	Engine Driver LCDR		1	2	
	2	D4	Labourer SWR		1		
18	3	D4	Labourer SWR		3		1
	2	E13	Painter		2		
19	3	D3	L ww		3	2	
	2	D4	L ww		2	2	

(Cross) Street
Ascalon

No.	Rms.	Class.	OCCUPATION, &C.	Wife.	Children 3-13	Others in Family.	POSITION.
20		E7	Carpenter		5	1	
21	3	D4	L. ww		3	1	
	2	D4	L. ww		2	1	
22		D4	L SWR		3	2	
23		E6	Stoker		2		
24	3	D4	L gw		1		
	2	D4	L gw		5		
25		E14	Boob maker jap maker		2		
26		D4	L rd		2		
		D4	L rd		2		
27	3	E13	Brakeman		5		
	2	E9	Smith SWR		1	1	
28		D4	L rd		3	1	
29		F9	Hammerman		3	1	
		D4	L rd		-	1	
30		E5	Plate Layer		2		
31		D4	L		1	2	
		E8	Cab maker works away		1		
32		F13	Engine Driver		1	1	
		E5	Pl Layer		2	1	
33		E5	Barman		1		
34			Foreman SWR			2	
			L SWR			1	
35				W lodger			
36		E10	Billiard Table Maker		1		

Cross Street

No.	Rms.	Class.	OCCUPATION, &c.	Wife.	Children.		Others in Family.	POSITION.
					3-13	-3		
37	E7		flaxier Shunter.		2			v
39	E25		shoemaker shop		1			2 men.
40	D4	I	sur		3			
41	3 D4	I	sur		1			
	2 E13		Stoker		3	2		
42	D4	I	sur		3	1		
43	E5		Coalporter gen		2	1		
44	E24		Gen. Shop.		1			
44a	E24		Gen. Shop.		2			
45	E13		Stoker (cd)		3			
46	D4	I			4(1)			ind. School.
46	E7		Bridleger		2	2		
47	D4	I	sur		4	1		
	D4	I	sur		3			
48	F8		Coachbuilder in long lane.		4	1		the man reg work
49			Ordnance shop		-			
49a	D4	I	ww		2			
50	F9		Fitter Carmen		3	4		
51	D4	I	ww		3	1		
52 53a			empty					
53			Baker shop					empty 2 rms

pp ind. D Ten
 C 2 D 25 E 30 F 5 = 62

(Devonshire Terr.)
Ascalon Street

Savona Street

No.	Rms.	Class.	OCCUPATION, &c.	Wife.	Children.		Others in Family.	POSITION.
					3-13	-3		
			Devonshire Terr					
2	E7		Stone Mason		1	1		
3	3 C3	I			3			
	2		Carmen			1		
4	E5		Carmen		2	1		

Savona Street								
1			Gen shop					
3			Gen shop					
5	E13		Rhp		3			
7	3 D4	I	sur		4	1		
	2		Butcher J.			1		
9	3 D4		Plushee		2			
	2 E18		Ferris		2			
11	E7		Mail pd. works in					
13	E13		Table maker SWB		2			
15			Fremmer sur					
17	D4	I	sur		1		1	
19	D4	I	sur		3			
21	E5		C. porter		3			
23	E7		pter. ho.		3			
25	C3	I			1	1		
			Bridlemaker		1	2		irr.

L. Blue
 4 rooms kitchen 10/6
 worst for attendance
 36

worst in the
 block
 not so poor but
 improved

10/6 let off 2 rooms
 51
 Suppl. 2 1/2 rms

No.	Rms.	Class.	OCCUPATION, &C.	Wife.	Children.		Others in Family.	POSITION.
					3-13	-3		
27		C3	L		3	1		
		B33		W Chas west.	1			adopted.
29		351	Excavator sur	Dr.	-			
31	3	C23	fuel dealer		2	1		hand part.
	2	D4	Carmen		2	2		
33		E13	Stoker & CD R		3	1		
35			Carpenter		-			
37		D4	L. sur		1			
39		D4	Carmen		2			
41			Bargee phosphate.		1	1		in
43		C3	L		2	1		
		B33		W caretaker	1	1		+2 in oph.
45		D4	L. sur		3	1		
47			L. sur		-			
49		D4	L. sur		3	1		
51		E10	Brickmaker		3	2		actin numeros
53		E10	Potter double		1			reg
55		D33		W nooce	4			+2 in oph.
		E7	Carpenter		1	1		
57		E3	L. ww		3	1	1	
59		C7	glazier		5	1		in
61		D3	L. ww		4			
63		D3	L. ww		4			
65		C15	waiter milk		5	2		
67		C7	painter ho		3	1		

No.	Rms.	Class.	OCCUPATION, &C.	Wife.	Children		Others in Family.	POSITION.
					3-13	-3		
69				W Chas	-			
71		E7	Mason.		2	1		
		C7	Carp.		2	1		
B Jubilee Cottages								
1		D4	L. ww		3			
		B33		W Chas	1			
2			empty					
3		E10	Coachman		5			
6		D4	Carmen		1			
8		4	26/ Harmoniker out		2			
8		3	C3 L		5	1		
		2	Carp.		1			
		3	C3 L		4			
10		B22	Harber		3			doorman
12		C8	Barge bulker.		4	1		
14		C3	Coal P		4	1		
16		2	D4 L. sur.		2			
		2	E12 Sugar boilers		1	1		
18			gen	W Gen. Shop	-			
20		C3	L. ww		1			
22		B35		W woodchop in yard	3		1	boys work
24			gen shop		-			
26				W nooce	-			

No.	Rms.	Class.	OCCUPATION, &c.	Wife.	Children.		Others in Family.	POSITION.
					3-13	-3		
28	2		Hawker			1		
	2		25% glass block			2		
30		D4	Li ro			1		
32	2		Li ro			-		
34	2	C22	Clinalhaker			1		barrow.
34			Beerho			-		
36		E23	gent Dealer			2		barrow
38	2	D4	Li sur			4	2	
40	2	D4	Li sur			2		
40		D1/4	Horsekeeper			2		
42			Li sur			-		
44		D4	Li ww			3	2	
46			Li ww			-		
48		D4	Li sur			2		
50		D4	Li sur			2		
52		C14	Cabman			2	1	hire, cat
54		D4	Li sur			3	1	1
54		D4	Li sur			1		
56				W char		-		
58		C22	Hawker	W char		1		barrow
60		D4	Li ww			4	2	
62		D1/4	pl langman			2	1	
64		D4	Li sur			2	2	1
66								
6						13	0	2
6						5	23	13
						22	25	

No.	Rms.	Class.	OCCUPATION, &c.	Wife.	Children		Others in Family.	POSITION.
					3-13	-3		
1		E7/1	Plasterer			1		1
2		B33		W char		3		
3		D4/1	Chemical works			1		
4		E9	Blk & milk			1		
5		D4	Li sur			4		
			Li sur				2	
6		E7/1	gas fitter			1		
7		B33		W char		1		+ 2 at work
8		E9	ing fitt			5	1	
9		F8	Coach b sur.			2	1	
10		D4	Li sur			1		1
11 & 13			Laundryman			-		empty mens' gals
12		E10	Police man			1	2	
				W char		1		
14		D4	Li gw			2		
15		F9	ing fitt			1	1	
16			empty					
17		E13	Fireman			1		
18		E5	Li ww			2		
19			Li ww			-		
14A			Blom			-		
15A			no occ.			-		old.
			6 4 rooms + kitchen			but better	12/6	
						13	15	
						2	4	2

No.	Rms.	Class.	OCCUPATION, &c.	Wife.	Children. 3-13	-3	Others in Family.	POSITION.
-----	------	--------	-----------------	-------	-------------------	----	-------------------------	-----------

Pink

36

1			E5 Fitter L		-			
3			D53 Pl Layer		1	1		D4.
5			E7 Bk Layer		2	1		
7			F13 Eng Dr LCDR		3			
9			E13 Firman LCDR		1	1		
11			D4 Lt LCDR		2	1		
12			E11/2 Beltmaker		3	1		
13			E5 Rly P		-		1	
15			Bk Layer		-			
17			E8 Carri Maker LCDR		1			
19								
2			E27 Beer seller officer		2			
4	2		D54 Pl layer		1	2		
	2		E13 Rly P		3	2		
6			F16 40/ Barrack Sgt Chelsea Barracks		4	1		
8			E17 Gent's Servant		4			
10	2		E7 Shoefit		4	1		
	2		F9 Eng fitt		2	1		
12			F16 Turnkeyper. LCDR		3			
14	2		E13 Rly gd		3	1		
	2		D4 Lt swr		4	1		
16			D4 Carman		3	1		
18			Gen shop		-			

46

as Tidbury

C	D	E	F
	3	10	3

18

No.	Rms.	Class.	OCCUPATION, &c	Wife.	Children 3-13	-3	Others in Family.	POSITION.
-----	------	--------	----------------	-------	------------------	----	-------------------------	-----------

over

Sheldrick Street

~~32~~ 32 & ^{as Tubercle}
 No. Rms. Class. OCCUPATION, &c. Wife. Children. Others in Family. POSITION.
 3-13 -3

Pink

(36)

1	E 15	Beerho. keep- (in Ball ph. Dist)	Wife	3			
2			Wife	-			
3	E 9	Cutler work away		1			
4	E 4	Pl. layer		4	1		
5	D 4	Lt. gen		4	1		
6	E 16	Police ser		1			

Railway Cottages

1	E 24	Gun shop		2	2		
2	E 22	Harbour gen.		2			house
3			W char	-			
4		Lt. gen		-			
5	E 13	Rly Guard Lt. gen		3	1	1	
6	C 3	Lt. gen		5	1		

Sheldrick's yard

E 20	Blacksmith on-prem	W	2				
		C	1	D	2	E	3

022

10
N

No. Rms. Class. OCCUPATION, &c. Wife. Children 3-13 -3 Others in Family. POSITION.

Selden Street

34 No. Rms. Class. OCCUPATION, &C. Wife. Children. 3-13 -3 Others in Family. POSITION.

No.	Rms.	Class.	OCCUPATION, &C.	Wife.	Children. 3-13	-3	Others in Family.	POSITION.
1			No. occ.		1			fees pd. prob both work naulomen
3	E 13	Ry G	LCOR		1	1		
5	F 13	Eng D	LCOR		4		1	
7	F 13	Eng D	LCOR		2	1		
9		L	LCOR		-			
11	B 33			w wash	2			
13		Eng D	LCOR		-			
15		Ry G	LCOR		-			
17				w cha	-			
2	D 13	Coor. Cleaner	LCOR		4	1		
4	E 13	Ry G	LCOR		1			
6	D 4	L	LCOR		2			
8	E 7	Carp.			2	2		
10	E 13	Signalman	LCOR		1	1	1	
12	E 13	Ry G	DR		1	1		
14	E 13	Signalman	DR		2			
16	E 7	Bricklayer			1	1		

B C D E F
1 2 8 2

24
FB
N

Savona Place.

No. Rms. Class. OCCUPATION, &C. Wife. Children. 3-13 -3 Others in Family. POSITION.

No.	Rms.	Class.	OCCUPATION, &C.	Wife.	Children. 3-13	-3	Others in Family.	POSITION.
1			no occ					prob supp ^{ed}
2	B 33			Des. Char	1	2		
3	E 5	Stoker	gw		2	1		
4		Brakesman	DR.		-			
9	E 7	Bricklayer			4		1	
11	F 13	Rd Inspector	paint		4		42	well off. attends his wife's fault.
13	D 4	Rd sweeper	par.		1			
2		Brewer	tin		-			
4	D 4	L	rd		2			
	D 4	L	rd		1	2		
6-10		Woodcutter	shed.		-			
10	C 3	works "trib."			2	1		
12	B 33			w cha	1	2		
14		L	rd		-			
16		unply.						
22	C 7	Pter			1			
24				w cha	-			
26	E 10	Silver Smith	works any		1	1		
32	E 13	Ry P			1	1		
	C 22	Hawker			2			
34	E 18	Farrier	Asmith		2			
36	F 9	Hammer			3	1		

Savona House
Savona
B 33
E 8 wheelwright

B C D E F
3 3 3 6 2
N 17

No.	Rms.	Class.	OCCUPATION, &c.	Wife.	Children.		Others in Family.	POSITION.
					3-13	3		
New Cottages (small)								
1	E3	L	rd					
2	E9	Blk S			4			
3	E13	Rly	Serv ^t		1	3		
4		L	rd		-			
5	E5	Coal P			2			
6	C3	L	rd		1	1		
7	E7			W char				
8	E3		Bellhanger		1		vir	
9	E3	L	rd		2	2		
10				W wooc				
11			no occ old.					
	D 3	E 4						

Purple

36

purple

No.	Rms.	Class.	OCCUPATION, &c.	Wife.	Children		Others in Family.	POSITION.
					3-13	3		
Water works								
	F6		Foreman			3		
1			Gen Shop				1	
3	E13		Rly Guard	coffee shop	2	1		
5	F28		Boat m. man.		1			
7	F27		Becho		3			
9	E24		Gen Shop		1			
11	E7		Plasterer		2			
13	E24		Gen Shop		2			
15	D4		L gw		1			
17	E26		Coffee Hk		2			
19			Taylor		-			emph 3
21			Butcher		-			emph 2
23			Tobacco		-			
25			Baker		-			emph 2
27			Master Lightener		-			
29	F28		Manager Works in Vauxhall		2	1		
31	E28		Clerk		3			
33			Vicar.		-			
35	F25		Butcher	Butcher	4	1		emph, man, boy
37			oil seol		-			emph, 3 or 4
39			grocer		-			" "
41,3			pawn broker		-			" "
45	F25		Green Grocer painter		5	1		plaid help
2						1		

Pink

36

No.	Rms.	Class.	OCCUPATION, &c.	Wife.	Children.		Others in Family.	POSITION.
					3-13	-3		
47			No oee		-			
49		G-21	Master Builder large scale		1			employ
51		E 36		W Wife	1			employ several
53		F 20	Ladder maker		2			employ
55	2	F 42	Cook		1			hod seat
55			Public ho		-			
57		F 25	plumber		5	2		employ 3 or 4
59		#98	Bo School caretaker		-			
61			empty		.			
63		H 30	Civil Engineer		5			
65			Druggist		-			no help
67			Butcher		-			employ 2
69			Sweetshop		-			
71			Proo dealer		-			employ
73		30/-	Carp		-			
75			Public ho		-			employ banner
77			Beer ho.		-			no help
79	Miller		L wv		1			
81		F 25	Barber		2			employ 2 or 3
83		F 25	Baker		5	2		employ 2 or 3
85		E 8	Sawyer works away		3	3		
87			Distiller's store		-			employ
89			oil test		-			
91			Compositin		1			
93		F 27	Beer ho		3	1		

No.	Rms.	Class.	OCCUPATION, &c	Wife.	Children		Others in Family.	POSITION.
					3-13	-3		
95		E 13	Rly Cr ed.					1
96	2		L rd					2
97		E 13	Fireman CD					2
	2	D 4	L ed					1
99			Stoker CD					1
101			No oee old		-			
103			empy					
105			Driller C.P.					

Shops.

very small before 1913 6 rooms
private houses 93-125 8 rooms. 114/6.

107		F 32	Indep					2
109		E 7	Carp					1
111		D 4	L					2
113		D 4	L					1
115		E 7	Stone ma					3 2
117		D 33		W Wife				1 adapted
119		D 33		W Wife				3
121		E 19	Blind maker at ho					2

No.	Rms.	Class.	OCCUPATION, &c.	Wife.	Children.		Others in Family.	POSITION.
					3-13	-3		

123	F28		Trav		1		Family	1/9
125	G29		Mtge Broker		3		Family	

B C D E F G H
 6 12 16 1 1=36

No.	Rms.	Class.	OCCUPATION, &c.	Wife.	Children		Others in Family.	POSITION.
					3-13	-3		

1	E13		Fireman CDR		4			
	E13		"		1			
3	E8		Caror Bder CDR		4			
5			R Po		-			
7	E13		Ry Gd		1			
9	E7		Structur		5			
	C3		L		3			
11	D4		Cornman CDR		3			
	E13		Ry Gd CDR		3			
13	E13		Shunter CDR		1			
15	D4		R Po		4			
17	E19		T at home		2			
19	D4		R Po		1			
21	D13		Shunter		2			
23	D13		"		2	2		
25	F13		Ang Dr		1			
27	E7		B der		1			
29			R Po		-			
31	D4		"		1			
33	C3		L CDR		3			
35			Signalman		-			
37	E8		Barge bder		2			30
39	E24		Clothier Shop		1			30
41	D4		Shunter		3	1		
	E7		Carp		1			

42 Stewarts

No.	Rms.	Class.	OCCUPATION, &c.	Wife.	Children.		Others in Family.	POSITION.
					3-13	-3		

43			Signalman Foreman				1	
----	--	--	----------------------	--	--	--	---	--

45	F9		Eng		2	2		
	C31		Paralytic	wastes	1			

6 rooms about 10/-
comfortable &
at 30/-

	B	C	D	E	F
	3	7	16	3	

24

as resp as Tidbury
not more so

S Block.

No.	Rms.	Class.	OCCUPATION, &c.	Wife.	Children		Others in Family.	POSITION.
					3-13	-3		

S^t George's Road. Pink

1			Bders					
---	--	--	-------	--	--	--	--	--

2	F13		Eng Dr		2			
---	-----	--	--------	--	---	--	--	--

3	F13		"		1			
---	-----	--	---	--	---	--	--	--

4	F32		Ind		1			
---	-----	--	-----	--	---	--	--	--

5			Eng Dr					
---	--	--	--------	--	--	--	--	--

6			Ind					
---	--	--	-----	--	--	--	--	--

7	F9		Eng		6	1		
---	----	--	-----	--	---	---	--	--

8	F13		Eng Dr		2	1		
---	-----	--	--------	--	---	---	--	--

9	E7		Carp		1			
---	----	--	------	--	---	--	--	--

10	E32		Ind		2			
----	-----	--	-----	--	---	--	--	--

11	E13		Ry Gd		3	1		
----	-----	--	-------	--	---	---	--	--

12	E38			W ind	2			
----	-----	--	--	-------	---	--	--	--

	E13		Ry Gd		3			
--	-----	--	-------	--	---	--	--	--

			Carp			1		
--	--	--	------	--	--	---	--	--

S^t George's Cottages (4 rooms)

	D4		Boiler Attend		2	2		
--	----	--	---------------	--	---	---	--	--

	E9		" Make		3			
--	----	--	--------	--	---	--	--	--

13	F20		House Dec Master		2			
----	-----	--	---------------------	--	---	--	--	--

14	E32		Ind		1			
----	-----	--	-----	--	---	--	--	--

15			Fitter					
----	--	--	--------	--	--	--	--	--

16	F9		Eng		2			
----	----	--	-----	--	---	--	--	--

17	E9		Coppersm		3	1		
----	----	--	----------	--	---	---	--	--

	F6		Foreman CDB		1			
--	----	--	----------------	--	---	--	--	--

sup. ^{lag} ^{enpl}

(Room 11)
action

av
35 enpl
203.

No.	Rms.	Class.	OCCUPATION, &c.	Wife.	Children.		Others in Family.	POSITION.
					3-13	-3		
18.	E15		Waiter in Strand		2	1		
19.			Paperh		1	1		
20	C3		L Landman employed.		1	1		
21	B33			W works	1			12.
22			Eng Dr		-			
23			Pier Master St Pauls		-			28-
24	E9		Bkksn		2			S. Kew
25			Genl Servant		-			
26	F9		Eng fitt		3	1		
"	C3		L		1			
27	E13		Eng Dr		5			
	E13		Foreman		2	2		
28	E13		"		1	1		
29	C3		Foreman.		6	1		empl at S.K. often out
30	E13		R Po		1	1		
31	E8		Wheelwr		1			
32	E5		Plate L		1			
	F13		Eng Dr		2			
33			Reg Insp Fravelling		-			
34	F13		Eng Dr		3			
35	F13		"		1			
	E9		Iron moulder		2			
37	E13		Fireman		1			
	E28		Clk C.O.R.		1	2		

45

St Georges Road								
No.	Rms.	Class.	OCCUPATION, &c	Wife.	Children		Others in Family.	POSITION.
					3-13	-3		
37		E7	Joiner L		3	1		
38		E13	Eng Dr Fitter		3	1		
39		E7	Carp		2	1		
			Eng fitt			1		
40		D4	Carman		3	1		
41		E28	Clk		1			
42			L		-			men lodges.
43		E5	Carman		1	1		
44			Ind		-			
45			Bkl		-			
46		F13	Ry Go		1			
47			Carp		-			
48		F13	Eng Dr		2			
49			Cab Make		-			
50		E13	Eng Dr		6	1		
51			Rate Coll ^r		-			from
52				W work	-			
53		B33		W work	3	1		2 Trapham.
54		F13	Eng Dr		2	2		
55		E13	Fireman		1	2		
56		B33		W work	1			2 in Barnardo.
57		F13	Eng Dr		3	1		
			Ind	S	-			over halfpenny

46 St

No.	Rms.	Class.	OCCUPATION, &C.	Wife.	Children.		Others in Family.	POSITION.
					3-13	-3		
58	E13		Foreman	1	1			
	E13		R Po	1				
59	E13		Signalman	1				
60	F20		Laundry	1				40% empl. 5 or 6.
61			Foreman CDR	-				
62	E7		Plb	1	1			
63	F20		Bder	2				
64	F9		Eng	2	1			

117

6 rooms.

at 12/6.

30-35.

near all railmen
& steady.

women resp. B C D E F = 57

3 3 1 34 16

Corunna Road *Pick* 47

No.	Rms.	Class.	OCCUPATION, &C.	Wife.	Children		Others in Family.	POSITION.
					3-13	-3		
1	G27		Publto owner			3		80% empl. 2 or 3.
2	F9		Brass mdr			2		
3	E12		Baker lynn			1	1	
	D4		Corman			4	1	
4	F13		Eng Dr			3		
	E10		Pipe maker works in street, etc			1		25% empl.
5	F9		Brass Riveter			1	2	
	F8		Joiner			2	1	
6				W		-		Wife
7	D4		L CDR			2	1	
8	E8		Cart			1		
9				W		-		"
10	E5		Line man			1		
	E5		"			1		
11			Gas fitt			-		
12	E13		Ry Cdr			4	1	
13	E9		Eng			4		
	E3		L			9	1	
14			Foreman CDR			-		
15	E5		Packer			2		
16	D4		L CDR			3		
17	D4		L			3		
18	E28		clk			5		
19	D4		Platelayer			1		
19	E9		Eng Smith fitter 3wr			1	2	

Pick
36

No.	Rms.	Class.	OCCUPATION, &c.	Wife.	Children.		Others in Family.	POSITION.
					3-13	-3		
20		F9	Eng Smith		2			
21		F13	Eng Dr		3			
22			Foreman			1		
23			inf. refused.			2		neighbors Kings Smith
24		F13	Eng Dr		3			
25				W	-			
26			Rly Go		-			
27		F13	Eng Dr		1	1		
28		E8	Goldbr Bge man		4		1	
29			Ind		-			
30		D13	Rly Po		4	1		
31			2			1		
31		D18	Messengers to firm		5			30
32		E32	Ind.		1	1		
33		E18	Furner		2	1		
34		E5	Perman		1			25
34		B33		Des wakes	2			
		F9	Boilermk		2	1		
35		E12	Confect unligawer		1	2		
36		E9	Blk sm Carp		1		1	
37		E7	Carp.		6			
38		F13	Rly Insp		3	1		
39			Rly Servt		1			

Columna Road									
No.	Rms.	Class.	OCCUPATION, &c.	Wife.	Children		Others in Family.	POSITION.	
					3-13	-3			
40		E5	Foreman		1	1			
41		B33		W wakes	1				
42		E13	Eng Dr		3	1			
43		D4	L		1				
43		E13	Eng Dr		4	1			
44		E13	P. C. s.w.r.		2	1		[Heavy 9 at 32/-+ after 12 years.]	
44		E13	Eng Dr		4				
45		F13	"		1				
46		E7	Bhl		2				
47			Foreman			1			
47		F13	Eng Dr		1				
48		E13	Foreman		1	2			
48		F13	Eng Dr		2	1			
49			Eng fitt		-				
50		E13	Eng Dr		2	1		(bad attend)	
51		E8	Wagon maker C O R		1	1			
52		E9	Driller		1				
52		F9	Blk sm		1	1			
53		E13	Eng Dr		1				
53		E10	Carpet plamer maple		2	2			
54		F7	Carp.		1				
55		E7	Ho Dec		2	2			
55		E9	Eng fitt		2	1			
56		F6	Lightman		2	2			
		B33		W wakes	1				

50 *Comme Road.*

No.	Rms.	Class.	OCCUPATION, &c.	Wife.	Children.		Others in Family.	POSITION.
					3-13	-3		
57			Iron mld		5	2		
	D4		Carpenter		2	1		
58			Carp		-	-		
59			Ind		-	-		
60	D4		L		4			
61	F13		Eng Dr		2			
62	F22		Coal Dr		2	1		
63	F13		Eng Dr		1	1		
64	D4		Plate L		4	1		
65	D15		Tobacco		4	1		

35/-
vanc
house
of carnis
for laundries

150

as St George's Road
houses, respectable & income.
women respectable

B	C	D	E	F	G	
2	2	14	36	13	1	= 68

Pink
Porson Street.

No.	Rms.	Class.	OCCUPATION, &c	Wife.	Children		Others in Family.	POSITION.
					3-13	-3		
1			Stained glass work		3	1		
	B33			W	3			
2			Ind ^{dry}		-	-		
3	D4		Plate Lr		1			
	D4		Carpenter		1			
4	D4		L		1			
5	E10		Bookbinder & filder		5			
6	E13		Fireman		1	1		
7	F13		Eng Dr		2			
8			Ind					
9			Ind					
10	F13		Ry Go		1			
11	E13		Eng Dr		1			
12	F9		Fitter		1	2		
13	E9		Fitter		1			Carters Home.
	E5		Timber		1			28-30
14	E13		Eng Dr		1			
15	E33			W				Wagner 30/.
16	E33			W				"
17	F9		Fitter		3	1		
			Glass warchomen		1	1		
18	E13		Foreman		2	1		
	E13		Ry Go		1	1		
19	D4		Pl Lyr		1	1		
	D13		R Po		1			

36

No.	Rms.	Class.	OCCUPATION, &c.	Wife.	Children.		Others in Family.	POSITION.
					3-13	-3		
20			Watchmkn		1			
21	E13		Fireman		2			
22	E5		Stock keeper		1			
23	E10		Billiard table mkr		5	1		works at 30 Westmole bridge rd. at least
24	E13		Foreman		2	2		
25	E13		Bar keeper		2	2		on rly.
26	E13		Eng Dr		3	1		
27	F13		Eng Dr		2	1		
28	E7		Bkl		1	2		
29	E9		Driller		2			

As Common Rd.
 houses & people B C D E F
 1 1 4 18 6
30

No.	Rms.	Class.	OCCUPATION, &c.	Wife.	Children		Others in Family.	POSITION.
					3-13	-3		
1	E7		Bkl		1			
2	D4		L CDR. machinist	washes.	5	1		
3			Ind			2		
4	D4		L		1			
5	D4		L		1			
6	E5		Stoker		1	1		
7	E13		Foreman		1	1		
8	F9		Boilermk		3			
9			Ind					
10	F13		Eng Dr		1	1		
11	E33			W washes.	1			293 wages
12	D18		Bill poster		2	1		25
13	C3		L		5	1		
14			Eng Ind					
15	E13		Foreman		2			
16	C3		L		2			
17	F9		Eng Foreman		3	1		
18	E3		Cab Mks		3			
19	F13		Eng Dr Carr Cle		1			
20	F7		Bkl		3	1		

No.	Rms.	Class.	OCCUPATION, &c.	Wife.	Children.		Others in Family.	POSITION.
					3-13	-3		
20		E13	Eng Dr		1			
21			Fireman			1		
22		F28	Manager		1			ent. 30-35
			Rly Gd			1		
23		D13	Shunter		2			
24		E13	Eng Dr		3	1		
			Fireman			1		
25		F7	Carp		1			
26			Ind		-			
27			Storek ^{ry}		-			
28		F7	Stone m ^{an}		1			
		E13	Fireman		2			
29		E13	R Po		3			
		E13	Rly Gd		3			
30		F9	Eng fitt		2			
31		E9	Gas fitt		3	1		
32		D33	Ind	W	4			
		E7	Carp		1			
33		D4	L		2			
		E13	Fireman		1	1		
34		F15	Cook		5			40?
		E13	Rly Gd		5	1		
35		D4	L		1	2		
As Comuna Road								

B C D E F
4 18 6 35

No.	Rms.	Class.	OCCUPATION, &c	Wife.	Children		Others in Family.	POSITION.
					3-13	-3		
1			Beer Ho		-			
2			Fireman		-	2		
		E9	Gas fitt		2			
3			Ldy		-			
4		F7	Carp		1			
5			Fireman			1		
6		F13	Eng Dr		1	1		
7		F13	Eng Dr		2			
8			Fireman			2		
9		F13	Eng Dr		2			
10		E13	"		4	1		
11		E13	"		4	1		
12		E13	"		5			
13		E13	Brakesmen		1			
		E9	Eng fitt		4			
14		C3	L		6	1		
15		E13	Fireman		2	1		
16		E7	Stone cutter		1			
		E9	Blk m ^{an}		1	1		
17		E19	Tailor		3	2		
		B33		W	1			
18			L		-			
19			Ind		-			
20			"		-			

Children 36

No.	Rms.	Class.	OCCUPATION, &c.	Wife.	Children.		Others in Family.	POSITION.
					3-13	-3		
21	E9		Eng Pitt		3	1		
22	D4		Carpenter		2			
23	E13		Ry Rd		4			
	D4		L		1	1		
24	E12		Butcher works in market		4	1		
25	E13		Ry Rd Fireman		3	1		
26	E9		Blk sm		5			
27			<u>Idy</u>	W	-			empty 8 or 10
28			Eng Dr		-			
29			"		-			
30	E9		Hamm		1	1		
31				Wives	-			"
32	D4		Plate typ		3	1		
	D4		"		2			
33	E13		Fireman		1	1		
34	E9		Coppersm		2	1		
35	D4		L		2	1		
36	E14		Cabman		1			hire
	D4		L		3			
37	E24		Green gro shop		2			30% not empl. no camp.
38			gro sh		-			
39	F13		Eng Dr		1			

No.	Rms.	Class.	OCCUPATION, &c	Wife.	Children		Others in Family.	POSITION.
					3-13	-3		
40		F03	Fitter		1	1		
41			Mason			2		
		E13	Eng Dr		1			
42			"			1		
43		D24	Dairy		3	1		25-30 hand barrels not succeeding
		E8	L		2	2		
44		F13	Eng Dr		1			
45		E24	gro		3	1		

As Cornua Road.

prob 20-30 years old.

B	C	D	E	F
3	4	5	23	6
1				

39
N

Handwritten signature or initials.

58 Stock Dale Road.

L. Blue
 Children. Others in Family.
 30

No.	Rms.	Class.	OCCUPATION, &c.	Wife.	Children.		Others in Family.	POSITION.
					3-13	-3		
1			Printer			1		
		C3	L			1		
3		E10	Compos			1		
5		C3	L			4		
7		D4	Coal Po			3		
		E4	"			3	2	
9	2							
11		C3	L			3		big yard in 3
		E7	Sto mer			1		
13		F28	Trav in sweets	Jones		4		30-5
15	3	E8	Cooper			5		comb
	2	E7	Plash			2	1	
17	2	D4	L			1		
17		F9	Eng fitt			1		
19		E7	Pter			3	1	
21		E13	Sto her			2		
		B33		Das washer		2	1	
23		E11	Boot finisher			1	1	
25		C3	L			4	2	
27		E9	Brass fin			2	1	
		C3	L			3	1	
29			Baker sh			-		
31				W sweet my		-		
33		D4	Carmen			4	1	
		C3	L			3	2	

No.	Rms.	Class.	OCCUPATION, &c.	Wife.	Children.		Others in Family.	POSITION.
					3-13	-3		
35		E9	Blk sm			2		
		E9	Hammer			1		
37		C3	L			3	1	
39		C3	" ?			5	1	
41		D13	Fireman			4	1	
43		E10	Cork cutter works away			4	2	comp house.
		C7	Carp			4	2	
45		B33		W washer		1		
		C3	L			1		
	3	C3	Sto her			5	1	(moved 5 times in 18 months)
47		C3	L			3		
49		C7	Ho pter			5	1	
51		C3	Sto her			4	1	
		E5	Carp			1		
53		B33		W		3		(1 in 18 months)
55		E10	Cork cutter			1		
57			Hen sh			-		barrow
59		E10	Portmanteau mkr			1		
61		E7	Plast			1		
63		C7	Pter			4	1	
		E7	Sto mer			3		
65		E5	Machine m			2	2	
		C7	Pter			4	1	
67	2							
69		D11	Account mkr Public			2		

No.	Rms.	Class.	OCCUPATION, &c.	Wife.	Children.		Others in Family.	POSITION.
					3-13	-3		
71	D4		Corman		2			
2	E13		Fireman		1	1		
4	B33			Des washer	2			went hopping by poor.
6	E7		Slater		3			
8			Supporter					kins keep.
10	E13		Eng Dr		2			
12	C8		Fr Pol		4			
14			Corman			2		
16			Gen Shop			1		
18			Eng Dr			1		
24	E1B		P.C. COR		1			
20	C7		Bkl		5			
2	E9		Boiler maker		2			
22	C3		L		1			
	E11		Hatter		3			
24								
26	E7		plb		3	1		
28	B33			Des	1			boy 99th inst sells mother's handkerchiefs.
30	D4		Corman		3			
32	C3		L		1			
34	E7		Carp		2	1		
	C3		L		1			
36	C3		L		2	1		
	E18		Purifier g.w.		3	2		

No.	Rms.	Class.	OCCUPATION, &c	Wife.	Children		Others in Family.	POSITION.
					3-13	-3		
38			old					
40	C3		L		3	1		
42	F18		Army Commissionaire		5			(at Nether's gets 6 or 7 guineas a week.)
	E10		Pfite maker		3	2		
44	F9		Eng filter		3	1		
46			L			2		
	C3		L		2			
48	E8		Fr Pol		2	1		
50	E11		Helmet Maker Public	and	1			Dr. turned off bad lot.
50	C3		L		3			
	C3		Corman		2	1		
52	C3		L		3	1		
	DM		Cloth worker		2			
54	E13		R Po		1			
56			Eng Dr					
58	E10		Colowist mixed colours		3			
60				W.				
62	B33			W	5			
	E7		Carp		1			
64	F13		Eng Dr		1			
			Built within last ten years					very built. many decent people.
			6 rooms & big kitchen					
			houses in best condition, to get houses cleaned					people move very frequently
			Drainage in this part bad.					women in the worst in district as bad as 3 or 4 others. I think it.

199

B C D E F
5 4 1 8 3 3 5 7 9

purple 20
30-35.

Dashwood Road

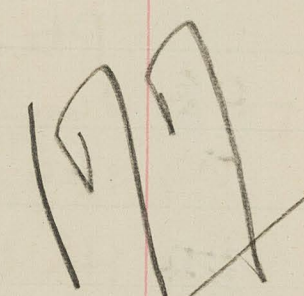
No.	Rms.	Class.	OCCUPATION, &c.	Wife.	Children.		Others in Family	POSITION.
					3-13	-3		
1			L. ill.					
3	E18		Detective Surv.		3	2		30?
5	B15		Dra A		3			
7	F13		Eng Dr		4			
9 e								
11 e								
13	E19		Bootmk		1			
15				W				Wgn
17	E7		Carp		1			
19			old bus					
21	E7		Plast		1			
23	C3		L		3	1		
25	E7		Ho Dec		1			
27 e	C3		L		3	1		
29	B33		E	W works	1			
31	C19		T		4	1		
33	C3		L		1			
35	C3		Broker's man		1			all 20 av.
37	B8		Turner		3	1		
39	C3		Ry L		4	1		
41				W	1			
43	C3		L		4	1		
45	C3		L		4	1		
47	E9		Blk sm		2	1		

L. Blake
36

No.	Rms.	Class.	OCCUPATION, &c.	Wife.	Children		Others in Family	POSITION.
					3-13	-3		
39	D22		Guergo		4	1		25 pay de carb
41	C14		Cabman		3			hires
43	B24		Gen shop		1			
45	G27		Pub Ho		2			80/- employ 2 or 3
47	B4		Steam Crane Dr		5			
49 e								
51	E13		Foreman		1			
53 e								
55	C3		L		3			
57, 59 e								
61	E13		Eng Dr		3			
63	C3		L		2			
65 e								
67	E9		Blk sm		4			
69	E7		Carp		4	1		
71			L			1		
73	C33			W	3			Wgn
75	C3		L		1			
77	B33			VX works	1			
79 e			old					
81	D12		Butcher at market		4			
83								
85	C7		Carp		3			
87	B13		R Porter		2			

No.	Rms.	Class.	OCCUPATION, &c.	Wife.	Children.		Others in Family.	POSITION.
					3-13	-3		
4	E9		Eng		4	2		
	C3		L		1			
6	E28		Clk		1			
	E7		Bkl		3			
8			old		-			
10	E13		Eng Dr		2			
	E13		Fireman		1	1		
	E13		"		1	1		
12			Hammer			1		
14								
16	D10		Bookedge Jddr		4	2		
18	D13		R Po		4	2		
20	C3		L		2			
22	E5		Time k		4			
24	D13		Ry Servt		1			
	D4		Horse k		1			
26	E28		Clk		1			
28	C7		Bkl		4	1		
	C3		L		1			
30	D4		Brewer		3	2		25
32	D13		Carv ele		3	1		
	B28		Clk		1	2		
34	E7		Carp		2			
36	E18		Steward (Stops?)		4	1		
38	D15		Milk Carv		3	1		

No.	Rms.	Class.	OCCUPATION, &c	Wife.	Children		Others in Family.	POSITION.
					3-13	-3		
40	F13		Eng Dr		2	1		
42			L		-			
44								
46	E9		Turner s. wr shops		4	2		
48	C3		L		1			
48	C3		L		3			
50	E7		Carp		1			
52	B33			W washes	2			
54	E13		Eng Dr		4			
56	E7		Bkl		4			
58	D15		Milk Carv.		2	2		
60			Iron old		-			prob supported
62			" "		-			
64	C3		Bkl L		1	2		
66	E7		Carp		1			
66	E5		Miner excavator?		2	1		my resp
68	E12		Pork Butcher		1	1		
68	E7		Slater		1			
70	E28		Shothead W		3	1		
72	E13		Eng Dr		4	1		
			Exactly like Stockdale Rd					
			Age houses men earnings		32	11	28	
					B C D E F G			
					3 2 1 8 3 7 3 1			



73
 73
 73
 73
 73

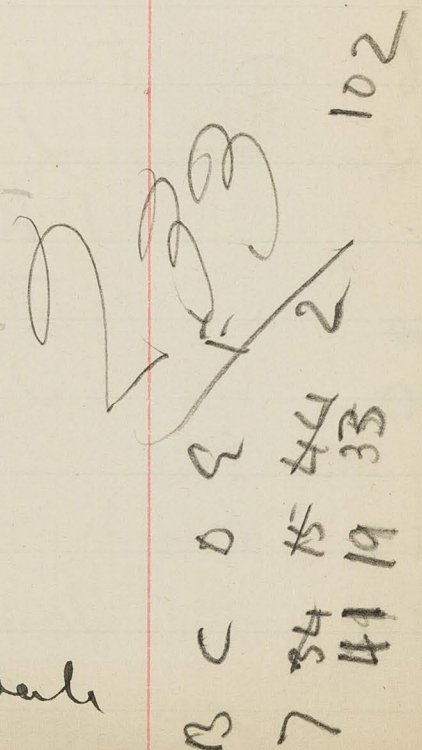
Sterndale Rd *Purple*

66 No.	Rms.	Class.	OCCUPATION, &c.	Wife.	Children.		Others in Family.	POSITION.
					3-13	13-3		
1	E7		Pter		2	1		
	E5		Co Po		1	1		
3	D9		Hamm		5	2		
1	C3		L		4	2		
5	E9		Eng		3	4		
	E10		Farm		1			
7	E9		Blk sm		2			
	D33			S Dau	1			
9			Ind old		-			
11	C3		L		2			
	E13		Eng Dr		1			
13	C3		L		1			
15	E22		Saleman Green's Bros Mkt		2			av 25
	D13		Carole		3	1		
17	C3		L		2	2		
19	?		R Po			2		
2	2 E5		Shell factory/ Shot brass water		1	1		
	2 C7		Pter		4	1		
21	F E5		Furnace man gas works stake		1			
23	E7		Heater whs away			2		
25	D32		Cripple. Ind		1			
	C3		L		2	1		
27	C3		L		1			
29	E8		Fr Pol		1			not by him

No.	Rms.	Class.	OCCUPATION, &c	Wife.	Children		Others in Family.	POSITION.
					3-13	-3		
31.33			e					
35		C3	L		1	2		
		C3	L		2	1		
37			e					
39			L			1		
		B33		W washer	3			
		C3	L		4	1		
41		D13	Rly Serv Clk		4	1		25?
			L			2		25
		C3	L		1			
43		B33		Dec washer	3			Wsm
45		C14	Cab Dr		4	2		
47		E9	Blk sm		1			
		E9	eng		1			
49		D4	L		1	1		
51			e					
53		B33		W washer	2	1		
55		C3	L		4	2		
57		C3	L		5	1		
59		E13	Furnace		1			
61		E10	glass blower		2			
		D4	L		1			
63		D4	Horse K		3	1		
65		E10	Printer		2			
		F13	Rly Go		4			
		B33		W	1			

Stonedale Road

No.	Rms.	Class.	OCCUPATION, &C.	Wife.	Children.		Others in Family.	POSITION.
					3-13	-3		
48		E7	Plash		1			
50		E13	Eng Dr		3	1		
		D13	Eng washer		1	2		
52	e							
54		C3	L		2			
		E18	Farmer		4			
56	e							
58			L		-			
60		E7	Carp		2			
62		D4	L		2			
62		C3	L		2	2		
		E7	Paper h		2			
64		E13	Stoker		2			
		E8	Coach ptn		2	2		
66		E33		W	3			10 fcs
68			L			2		
70		E7	P ter		3			
72	2	B33		W	1			
	2	C3	L		1			
	2	E7	St m		1			
74		D4	L		1			
		C3	L		3	3		
76		E15	Foreman		3	1		
78		D4	L sur		1			
			In all respects as				Sti ck dale	

102

 44
 33
 19
 41
 19

Stewart's Road

Pink

No.	Rms.	Class.	OCCUPATION, &C.	Wife.	Children		Others in Family.	POSITION.
					3-13	-3		
47		E32	Ind.		1			
49			Copper		-			
- A		D4	L		1			
51		E24	Greenw sh		5			30 own fam
53		E13	Tickdell		2			
55		E24	Pork Buttl sh	helps	1			30
57		C24		Des gun shop	2			20
58			Ind		-			
63			Man Pol			1		
		C3	L		3	1		20
65	2	C3	L		2			
	2	E13	Foreman		2			
	2	E7	glazier		1			1 yr 25 av
67		D4	Carman		2	1		
		D4	L		1			
69		E15	Cellarman		2			25
			Foreman			2		
71			Printer			1		1 yr
73			Leather seller Shop		-			empl.
75			Ind		-			
77	2	E9	Eng fitt		1			2 yr
	2	E9	Eng		2			"
	2	E8	Coach bdr			2		"
79		F13	Rf qd		1			
		F9	Eng fitt		1	1		

36

No.	Rms.	Class.	Occupation, &c.	Wife.	Children.		Others in Family.	Position.
					3-13	-3		
81				W	-			
83	E15		Cellarman		2	2		
8	E10		Printer		2			
85	F28		Agent		2		35 ^{or resp}	
87	E7		Carp Potman		3	1		
89	C33			W	2	1	logrip	
	E13		Fireman		1	1		
91	E9		Eng fitt		3	1		
93	F25		Baker sh		3		empl 40.	
95	F24		gro sh		1		35 ^{empl}	
97	E24		gen shop		1		25	
99			Butch sh		-			
101	E5		machinist		3			
103			Picfr Mkr		-			
105	E9		Eng		1			
	E13		Foreman		2	1		
107			Plen		-			
109			Inv		1			
111	E9		Blkman		3			
	D4		L		2			
113			L			2		
115	E5		Co Po		3			
117			car taker		-			
119	C3		L		2			

No.	Rms.	Class.	Occupation, &c	Wife.	Children		Others in Family.	Position.
					3-13	-3		
				W	2			157-
		B33		W	2			
		E5	Co Po	Washes & keeps the	2			
121	D4		Shunter		2	2		
		B33		W	2			15
123	E15		Shop A	W	1			
125			Boostyke at ho.		-			logrip
127	F13		Rf go		3	1		
	D4		L		3	1		
129	E24		Out Shop		1			30 - out empl.
131	E9		Blkman		4	1		
	E24		frstish shop.		4	1		30
133	E10		Fr Pol		1			
135	H30		M.D. Institute		3			200-300
137	e							
139			Green gro sh		-			
	E10		Sit Plate cleaners		1			
141			Butch sh		-			
143			Sand Eng		-			
145	E15		Waiter in strand		2	1		30
147	F25		gro sh		1			empl 2
	D4		L		1	2		
149			Eng		-			
151	e							
153	E5		Timber Po		3			
155	e							

No.	Rms.	Class.	OCCUPATION, &c.	Wife.	Children.		Others in Family.	POSITION.
					3-13	-3		
157	F13		Eng Dr		1	2		
159	E5		Time k		2			
	D4		L		1			
161	E7		Plb		4	1		not welded poor
(all moved together from main house)	C3		L	works.	5	1		
				W		1		
163	B33			W	2			
	D4		Sewer man parish		5	1		
165	7, 9							
171	D4		Camer		2	1		
173			Samplign			1		
175			red		-			
177	E7		Carp		5			ng
	B33			W	1			
				char				
179	D19		T also	dr	5			dr
181	F20		B der enph also Bookmaker		2			
183	E7		Coachm		1	2		
	C3		B der's L		2	2		
185	D4		Pl hys		1			
	E7		Carp		1			
187	E9		Eng felt		2	2		
189	D4		L		3	1		25
191	E7		Mason		4			

Stewart's Road									
No.	Rms.	Class.	OCCUPATION, &c	Wife.	Children		Others in Family.	POSITION.	
					3-13	-3			
193	E5		St g w		2	2			
	F5		" "		3				
195	E19		Bookmaker also		7	1		30- flats ho.	
	E7		Plb		2				
197	E13		frim rly		2	1			
	E5		Heavy Lifter rly		1	1			
199	E8		Coachbdr im		3				
201	E8		Sawyer		4	1			
203	E7		H to Dec		3				
	D4		L		1				
205	E7		Plast		2	1			
	F9		Eng		2	1			
6 roomed					10/6		25/30		
47 - 145									
147 - 205					8 roomed		15/ 16/-		
					with basement				
shops more					30/35/-				
houses abt 20 yrs									
in good condition									
resp. see dirks									
		BC		DEE		H			
		47		144313		1		82	

Acre Street Purple

No.	Rms.	Class.	OCCUPATION, &c.	Wife.	Children.		Others in Family.	Nail factory special work irreg. POSITION.	No.	Rms.	Class.	OCCUPATION, &c.	Wife.	Children.		Others in Family.	POSITION.
					3-13	-3								3-13	-3		
1	F9		Brass fin			5			8	E9		Hammer		1	1		
3	C33			W		2		logins		L					2		
5	E9		Boiler mk			1			10	C3		L		3	1		
	E13		Rly rd			2			12			Pler		1			
7	F9		eng			4			12	B33			W washes	1			12-5
9	E5		warehouse			2						Bus Crow		1			
11	L					-			14	C33			W	1			logins
13	D4		L			1						Co Po		-			
15	C3		L			2			16	D4		Carmen		2	1		
17	E9		Blkman			2	1					Fitter		1			
19	E13		Ironman			1			18	D4		L		1			
21	E9		Mechanic (nail factory)			2			20	E7		Pler		2			
23	2 1/2 B33		Carp			5	2	ch irreg mortar lay.	22	E7		Plaster		1			
	2 B33			W		2			24	E8		Carr Bdr		3	1		
25	E26		Coffee Ho			3		30 enlarged	26	D4		Carmen		3			
27	C3		L			2			28			Pub Ho		-			
29	E7		Blk			4	1		30	C3		L		5	1		elderly with example poor
31	E8		Ironman			1			32	C33			W	1			logins
33	F13		Rly Trav Insp			5	2		34	D4		L		4	1		eg
35	E9		Boiler mk			3				D4		L		3	1		eg
37	D4		Carmen			1											
2				W		-			4 rooms & kitchen (28-34 6 rooms) 14, 15 th				10/-				
4	E9		Hammer			3											respectable.
6	D4		Pldyr			4	2										25-30
8			Baker			2											Drinks in all these streets work regular

Nail factory special work irreg. POSITION.

36

elderly with example

eg

BCDE F 3 36

respectable.

25-30

Drinks in all these streets work regular

as Shaford Street

Etowah Street

[Large nail factory]

No.	Rms.	Class.	OCCUPATION, &c.	Wife.	Children.		Others in Family.	POSITION.
					3-13	-3		
1	E12		Baker pipe	lazy	3	1		
3	E10		Brick maker		3			
	C34		every a good deal	W	3			20.
			tailors					
5	D4		L		2	1		
7	C33			W	3			15.
			iron					
9	E7		Paperh		1			
11			Poulterer		-			
13	E16		Park Coach		1			25/- pens as a rule.
15	E7		Ho Pter		4			
17	E13		Wheel Ex		3			
			carve					
19	C3		L		3			
21	D4		Severman		1			
23				W	-			
25								
27	D4		Cannan		1			
29								
31	D14		Horsek		3	1		neg
			L					
33					2			
35	E9		Blkman		1	1		
2	E9		Reg		3	2		
4				W	-			
6	E13		Rh Po		2	1		
8	E9		Joint Maker		2	1		
			mechanic					
10	C3		L		4	1		
12	E9		B. Gilman		2	2		
			Carp					

30

No.	Rms.	Class.	OCCUPATION, &c	Wife.	Children		Others in Family.	POSITION.
					3-13	-3		
14			Steel Sm			1		
16					-			
18	C3		L		3	1		
20	E8		Wagon bdr		5			
			ry					
22	E7		Bhl		2			
24	E13		R Po		3	1		
26			hd		-			
28	E7		Bhl		1	1		
30	C18		Laundryman		2			20 of por
32			Eng Dr			1		
34	E7		Pter		2			
				young W	1			or little
36	B33				4	1		
			Wheeler					
	E8				3	1		
	E9		Hamm		1			
	E10		Shell maker		1			
			shell fact					
	E7		Bhl		1	1		

Exact as Acc. Sh

Handwritten signature or initials.

B	C	D	E	F
1	6	4	20	4
		16		

31

William Street

No.	Rms.	Class.	Occupation, &c.	Wife.	Children.		Others in Family.	Position.
					3-13	-3		
1	C3	L			1			
3	C3	L			1			
5	E7	Ho Dec			3			
7	D3	L			6			3 fees transmitted
	E9	Hamm			3	2		3 fees not returned
9	C3	L			1			
	D4	L			1			
11	C3	L			1			
	D4	L			1			
13	C3	L			2	1		
15	C3	L			4			
	E8	Carbider			4			
17	E7	Bld ry			3	2		3
19	95	Co Po			4			
		Sweep			1			
21	E13	Eng Dr			5	1		
23	D13	R Po		writes	6	1	2 guests	with bed married widows with bed
25	C3	L			5	1		
	C3	L			3			
27	E8	Coachman			5			
1A	C3	L			2	1		
2A	D14	Horse			4	1		
3A		L			-			
2 e								
4		Milkman			-			room

L. Blue
 (36)

No.	Rms.	Class.	Occupation, &c.	Wife.	Children.		Others in Family.	Position.
					3-13	-3		
6	E5	Co Po			2	1		
	C3	Excavator			4	1		
8		L			-			
10		L			-			
12		L			-			
14	C18	Gardener			4	1		in nursery
16	D4	L			2			
	D4	Carrier			4	1		
18	C3	L			2			
	C3	L			2	2		
20					-			
22	D4	Carman			5			
24	E13	Shunter			3			

B C D E F G
 15 8 7

as A are

Wm 2 foli...
 slightly rougher than face
 that man of same employment.
 jugs in morning, woman water

very callous about children
 all better in New Cut

Sheaford St 76 40
 New Rd ca. 1887

any out of pan house & same sheet

John Street

No.	Rms.	Class.	OCCUPATION, &c.	Wife.	Children 3-13	Others in Family.	POSITION.
1		C24	Hair Dr		2		small shop drinking
3		E10	Ferru		3		
5		E7	Plast		3	2	
		C3	L		1	1	
7		E3	Bagbdr		3		
9		C3	L		2		
		D4	Co Po		1	1	
11	4	E13	Wg Dr		5	1	
13		C3	L		1		
14		E12	Tripe Dr		1		comp
15		D13	Brakesman		5		
1		C3	L		1	1	
17		D13	R Po		2		
		E7	Pti		1	1	
19		E3	Woodch in 40		2		
		B33		W	2		
21		E9	Forgeman Sticker		2		
		B33		Des	4		washes
23		C3	L		4		
		C3	L		4		
25		C3	L		3		
25		C3	L		4	2	fus an.
		C3	L		2		
27		C7	Pti		2		
		E23	Gen Dr		2		25/- Car
29		C7	Pti		4	2	
		E7	Bkl		4	1	

36

No.	Rms.	Class.	OCCUPATION, &c	Wife.	Children 3-13	Others in Family.	POSITION.
31		E9	Boiler mke		3	1	
2		E24	Marine Store sh		2		30
4		C3	L		4		
		C3	L		5	1	
6		E7	Pti		1		
8		C3	L		3	1	
10		E7	Papuh		4		
10		E7	Bkl		2		
12			hd		-		
14		D8	Bill poster working		1	2	
16		E7	Bkl		1		
		C3	L		5		
		B33		Des washes	1		
18		C3	L		1	1	very unfuro
		C3	L		1		
		C3	L		3		
20		E23	Egg Salesman		4	1	
2		C3	L		3		
22		E7	Pti		2	2	
		E10	Glass blower Lambeth Rd		1		
24		E7	Pti		4	1	
2			Woodch in 40		-	3	
26				W	-		
28		C3	L		4		
30		E7	Plast		5	2	

83

very unfuro

48

126

30 3 12
B C D E F G
3 28 3 15

Mundella Road (off New Road)

No.	Rms.	Class.	OCCUPATION, &c.	Wife.	Children.		Others in Family.	POSITION.
					3-13	-3		
1	E13		Eng Dr		4	1		
3	E7		Pter		4	1		
5	E13		R Po		2			
7			L		-			
9	F7		Gas fitt Eng turner		4	1		
11	D4		Plate typ		1			
13	E9		Blks m		3	1		
15	E7		Carp		2			
17				W	-			
19	E7		Plast		1	1		
21	E10		Ferriter		3	2		
23	E5		Carmen		1			
23	D4		L	works	6		works.	conf
23	D14		Horsek		3	1		
25	E13		fireman		3	1		
27			L		1	1		
29	E9		Hammer		3	1		
31	C3		L		3			
33			L		1			
33	F9		Blks m		3	1		
35	E9		"		5			
37	F9		Hammer		3	1		no month
37	D22		Costean		2	1		
37	E31		Cripple	works	2			up poor
37	D12		Butcher		2			(son)

No.	Rms.	Class.	OCCUPATION, &c	Wife.	Children		Others in Family.	POSITION.
					3-13	-3		
39		C3	L		2			
41		C3	L		3	1		
41			Eng sur			1		
43		B33		W washes	1			W group
45			L	W	-			
47		D4	L		1			
47		E13	R Po		3	1		
49		F13	Eng Dr		3			
51		E13	Coachm		1	2		
53		F9	Fitter		3			
55		E36		W washes	3			suppl 2 or 3 at home
57		B33		W washes	1			
59		F7	Gbo ma		1			
61		D4	L		2			
63		E33		W washes	3	1		
65			fireman			1		
65			Eng fitt			1		
67		D4	Carmen		3			
69		F9	Eng		1	1		
71		E7	Pter		3			
73		F7	Carp		1	1		
75		C3	L		4	2		
75		D4	L		1	1		
2		E13	R Po		3			
2		F7	Carp		1			

No.	Rms.	Class.	OCCUPATION, &c.	Wife.	Children.		Others in Family.	POSITION.
					3-13	-3		
4	E7		Carp		3	2		
	D4		Lawn		1	1		
6	E13		R Po		4	2		
8			L Blk			2 1		
10			Foreman		-			
12	D4		Carpenter		3			
14	E7		Pter		2	2		
14	E13		R Po		2	1		
16	E13		Seine Shifter Savoy		4	1		
18			Caretaker wash ho			1		
18	E7		Carp		3	1		
20	E7		P lb		3	1		
20					-			
22	E10		Watchmaker Wp		5	1		
	E9		Hammer		1			
24	E9		Spring Maker Wp		1	2		
26	D31		Old. wood		1			
26					-			
28	E13		Signalman		2	1		
30	E13		Foreman L		4	1		

Sono
keep

141

13	9	0	2	F
2	6	14	3	2
5	13			

57

~~32~~ 4 rooms & kitchen : rent 10/6
 very respectable indeed 25-30.
 no drink new house 3 yrs old.

Mundella Terrace (part of new Rd but not numbered in it)

No.	Rms.	Class.	OCCUPATION, &c.	Wife.	Children		Others in Family.	POSITION.
					3-13	-3		
1	E24		Fred Fish Shop		4	1		30/-
2			Barber's Shop		-			live away
3			Pen Shop		-			
4			Old & Cool		-			2 rms
5			Gen Shop			1		
6	F24		Bookstall & leather seller		2		2 sons	35 pens.
7	E24		2nd hand Furnit		3	1		30 not empl
8			Confection		-			
9			Baker		-			
10	E24		Confection		1	1		25 not empl
11	F18		Comm air		1			8 apt.
12	E9		Iron turner		4	1		4 ph. houses
12	E10		Electrician		4	1		

Shops do not employ
 many people have other shops.

can about 30/

4 rooms & shop.

E F
 5 2

7
 N

19

87

Thessaly Sq (off New Rd)

No.	Rms.	Class.	Occupation, &c.	Wife.	Children.		Others in Family.	Position.
					3-13	-3		
1	D4		Eng Washer		2			
3	F13		Eng Dr		1			
5			Firem		-			
7	F11		T. avy		4			
9	E13		Forem		1	1		
11	F9		"Dresser"		4			
2	B33			W wash	2			
4	F9		Boiler mk		2			
6	F9		Eng		2			
8			Mutter		-			
10	E13		Firem		3	1		
12	E5		Co Po		4			
14			Eng Dr		-			
16	D4		L		2			
18	E7		Plast		4	1		
20	E28		Estab. Agri reul collectr		5	2		
22	F13		Eng Dr		4			
24	F13		" "		4	2		
26			Jws		-			
28	E13		R Po		2			

36

in metal works
89 on base will to do

30

46

as Mundella Road quite as respectable rents houses same

B 1 D 2 E 10 F 3 = 16

Thessaly Terr

No.	Rms.	Class.	Occupation, &c.	Wife.	Children.		Others in Family.	Position.
					3-13	-3		
1			Coffee ltr		-			
2	E24		Danzgls		2			25.
3			Frengw di		1			
rest work								
4	C33			W	2			
			Servant			1		
5	E12		Baker		3			
	E10		Printer		1	2		
6	E11		T. avy		1			
			Butcher			1		
7			Gas fitter			2		
8			Reader		-			
9			Boiler mk			2		
	D4		Gen L		4			
10 & 11								

36

as Mundella Terrace

C D E
1 1 4

6

89

n

Sussex Street

Single men & wifes.

No.	Rms.	Class.	Occupation, &c.	Wife.	Children.		Others in Family.	Position.
					3-13	-3		
1	E7		Paperh		1	1	36	
	F7		Carp		1	1		
2			Ind		-			
3	E13		R Po		2	1		
4	E11		Shoemk away		1			
5	F13		Eng Dr	S.	3			Supper
					1			
6	E9		Bkstr Carrille		5	2		
7	E7		Bkstr Fireman S. wv		5	2		
8	E9		Bkstr		2	1		
	E5		L		2	1		
9	E5		Drayman L		2	1		
	D4		Laudyman L		3	2		
					1			
10				W	-			
11	E9		Eng fitt		1			
12	D4		L		1	1		
13	E13		Po Ironmld		2	1		
					1			
14	E5		Co Po		1			
15	E13		Firem		5	1		
16			Carr Cleswr		1			
			Firem		2			

No.	Rms.	Class.	Occupation, &c.	Wife.	Children		Others in Family.	Position.
					3-13	-3		
17	D13		Brakesm		3			
	E13		Fireman		2	2		
18			Ind		-			Wifes
19								
20								
21								
22								
23	E13		Rly Gd		2			
	E13		"		1			
24	F13		Eng Dr		4	1		
25	E7		Bkstr		3	1		
	B3		L	Dr works	6	1		Dr upon
26					-			
27	E13		Brakesm Rly Exr		4	1		30
	E11		T away		3	1		
	E9		Eng		1	3		
28					-			
29	D4		Pl Lyr		2	1		
	D4		Rly pavilion		4	1		
30	E7		Pbr		3			
	E13		Servant		1			
31	E9		Eng		6			
32					-			
33	E13		Rly Gd		6	1		
	D4		L		1	1		
34	F13		Rly Insp		5			
35	F13		Eng Dr		2			
36	F13		Rly Gd		4			

6 roomed houses
141-
by respectable like Cornum & Rd of St. George's
at same as Mandella Rd

Incas Place

No.	Rms.	Class.	OCCUPATION, &c.	Wife.	Children. 3-13	Others in Family.	POSITION.
12			Foreman ply				
13	E13		Eng Dr		4	2	
14	3 E13		Slater		5	1	
	3 E13		Eng Dr		2	1	

as Sussex Street

some line into widening
rest pulled down for a ply.

houses 20 years old.

E
3

New Road.

No.	Rms.	Class.	OCCUPATION, &c.	Wife.	Children. 3-13	Others in Family.	POSITION.
1			Eng Dr	fancy bird shop.	4		Lambeth small shop
3			Butcher		2		
5-19			Board School.				
			Kupe			son	
21	E9		Boilermk		2		
23			Coffee Ho				
25			Butcher				small shop
27			Prov Dr				
29			Bookbinder				
			Blk sm		1		
31	E24		Tobacco sh		1		30 out app
33, 5, 7, 25			Prov Dr		5		60% empl at 54
39			Dispensary				
41	E24		Coal Dr sh		1		25 sacks
43	E24		Baker's sh		2	2	out empl.
45	D4		L		2	1	plthous
47	E8		Tr Pot		2	2	
49			Woo cc				
51	E10		Compos		2	1	
53	C3		L		1		
			Co Po		2	1	
55 e							
57	2 E10		Potter	fash	3		18
	2 D4		Carwan	son	2	1	
	2 C3		L		3	1	

No.	Rms.	Class.	OCCUPATION, &c.	Wife.	Children.		Others in Family.	POSITION.
					3-13	-3		
59		D4	L		2			
61		C3	L		3	1		
		E13	Stoke		2			
63		E13	Rly Po		1			
		D4	L		1			
65		E7	Bhl		3	1		
		E33		W	2			
67		E18	Farmier	washer	5			
69		E7	Pter		2	2		
71		E9	Gas fitt		3			
	1073		church.					
75	3	E9	Eng		3			
	3	E5	Turner		1	1		
77					-			
79			Hotel Po		-			
		E9	Drasspin		3			
81			Co Po			1		
83		E12	Butcher		3			
85		D33		W	2			Logis 28-24
87					-			
89		E18	mess ^m		2			28 th Gen
91			Firem		1	1		
93		F9	Eng		2			
95		F9	"		1			

No.	Rms.	Class.	OCCUPATION, &c.	Wife.	Children		Others in Family.	POSITION.
					3-13	-3		
97		F13	Eng Dr		2			
99			Carman			1		
101			Eng			1		
1			Gen A			1		
103		D13	Stok		5	1		
105		D37		S	1			Does not work well Demer resp.
107					-			
109		E28	Letter Boxer		2	1		
			" "			1		
111		E13	Firem			2		
		E5	Co Po		1	1		
113					-			
115		C3	L		5			
		D4	Carman		1	1		
117		E13	Eng Dr		3			
	2-4(1/2)		(in Lambeth)					
42		E24	Confect Shop		2	1		25
			opp School					
44			oil shop			1		
			mainey					
46		E24	Greenwith		2			25-30 unemp
48			Baker st.		-			" "
50			Dany st		-			
52		E20	Underleh		2			30 th unemp
54			Prov De st		-			(at 33)
56		E7	Bhl		1			30 av
58	sub 2.		S.W.R yard		4	1		no cart.
64		E24	Gen De st					30

No.	Rms.	Class.	OCCUPATION, &C.	Wife.	Children.		Others in Family.	POSITION.
					3-13	-3		
66			Doobink sh		-			
		D4	L		1			
68	224		Grain sh		2			30
70	F6		Gas store		3	1		
72	E5		Carver		1			
74			Ref		-			
76	E7		Ho Dec		3			
78	E10		Printer		5			
80	E9		Blk sm		2			
82	E10		Hermes mk away		5			
	E7		Stone Sayer		1	1		
84	F13		Eng Dr		1			
86	C3		L		6	1		
	D15		Potman		3	1		
88	E7		Carp		2	2		
90	G27		Prod. Ho		2	1		80% empd
92	F13		Rf Insp		4			
92b	E13		Fireman		1	1		
94	C33			W	1			W Gen
96	E7		Carp		5	1		
98	E7		Carp		4	1		
100	E13		R Po		1			
102	E15		Dra A		2			
104	E8		Clk		1			
	F8		Cooper		1	1		

New Road.

No.	Rms.	Class.	OCCUPATION, &C.	Wife.	Children		Others in Family.	POSITION.		
					3-13	-3				
106	D12		Buteli Wm		4	2				
108					-					
110	E13		Eng Dr		3	2				
112	F8		Cooper		1					
114			Pt School W					chief nurse of school in Dun		
116	F16		Insp L. Coy Land		4	2				
118	F12		Brewer working		3	1		184		
70-118		} 6 rooms.			141- abt					
75-117		}								
others 4 or 2 beds at 10.										
by respectable people more like Coonema Rd.										
					B	C	D	E	F	G
					8	11	43	9	2	
										<u>73</u>

No.	Rms.	Class.	OCCUPATION, &c.	Wife.	Children. 3-13	-3	Others in Family.	POSITION.
-----	------	--------	-----------------	-------	-------------------	----	-------------------------	-----------

No.	Rms.	Class.	OCCUPATION, &c.	Wife.	Children 3-13	-3	Others in Family.	POSITION.
-----	------	--------	-----------------	-------	------------------	----	-------------------------	-----------



v end of
Mr. Myland's book

part in Battersea

a block of ten houses in this block
 offered to A at £100 per house
 Mr. Wandsworth do
 for exactly like pp £300 per
 house would be refused.

Kempier
 Nine Elms Lane

gas stokers
 5/4 a day, 6 days one week
 7 days next —

gas labourers
 3/3 a day
 at 35.

Everett Sheet

No.	Rms.	Class.	OCCUPATION, &C.	Wife.	Children.		Others in Family.	POSITION.
					3-13	-3		
2			Rub Ho		-			
4			Pter	swel st	4	1		30 Socials
6					-			
8	4		Pipe fitter rphes		7	1		25 resp.
8	2		Hamber		+			
10						1		
12					-			
14			Carp. shodmk		1			35 compl
16					-			
18			Bden		-			60/ - empl.
20			Gas Stok		2			5/4 6/7
20			L. S.W		2			21 3/3
22			Gas Stok		3			resp.
24			" "		1			
26			L		3			21
28					-			
(30 no house)								
32			Plast Dr	Dr	6			35 wood work
			Carman		2			21
34			Plast	Dr	4			manipon
34			works					
60	1	B		W	1			in camp
	3	3	Co Po	Dr	3			28 resp
	2	2	Bkl.	swel st	1			few decub
62			Co Po		6			resp resp

No.	Rms.	Class.	OCCUPATION, &C.	Wife.	Children		Others in Family.	POSITION.
					3-13	-3		
64			Gas Stok L		5			dec.
					3			dec
66					(2 sleep in)			
				W	2			10+ must-own
			Bull. gas stok		2			9-1/2
68			Gas Stok	dr other	5			resp.
70			Co Po		1			fair
			Sawyer		1			
			Gas Stok		1			
			L		5			resp.
72								
74								
85			Gen Shop		1			30 decent
85			L [Gen (Houlet)]					
86			L militia	grd	3			fine 3/-
87			L		2			patients move
88			L		2			frequency
89			L		5			resp ab
90			Gas Stok	Dr	4			wood work
91			Coastern	h &	1			Dr basket
92			Co Po		1			dimon
			" "	arr	2			des wife
			" "		1			was with or con
					1			reformed all.
				W widow	2			needle work
			L					woodwork

No.	Rms.	Class.	OCCUPATION, &c.	Wife.	Children.		Others in Family.	POSITION.	No.	Rms.	Class.	OCCUPATION, &c.	Wife.	Children.		Others in Family.	POSITION.
					3-13	-3								3-13	-3		
10			Costa 1 arm	Dr	7			had prog.	35			Gas Slob	40	3			Dirt
			Regiment occ	-	2			Donkey fed well.	37			Lighting	became bad	2			40 w/ol prob ul
13	expt		Carp		1			decent	39			Gas Slob		2			fair
15			Bld		1			resp.	41			Co Po		4			resp
			Sweep		3			resp	43			Lab		1			"
17		17	Sailor		1				45			L	W	3			25 - St. Jerm lost 2 husbands
19			Carmen	Dr	2			reg. emp				Acton + Phd.	resp	6			decent
			L	Carmen mush	2			Imm	47			Water	mush	2 3 (thin)			(40) reg. decent
			Gen De.		1							Carmen		5			real patriot new pay, new will
			St. Sanger		4			objed povat				L		5			no belong to a poor little to his man's friend who would have living for 4 days in street.
21			Carmen		5			resp									house &
			L		3			decent									printed the Holy Scriptures then out.
23			L	T	3			resp									Don't with social organs I.V.L.
25			L		4			resp									
27			Fire Raker		6			resp									
29		A1	L	W	1			resp				L	splendid none not-	2			
			Carmen		1			resp									
			L	Sep	1			resp	49			L		2			resp
31			L		4			resp				L	resp	1			"
		B	L		3			patrol left sacked. but not									6 roomed ho : cannot be kept
33			Co Po		2			resp									9/- 2 10/- 2/-
			Carmen		3			resp									most let in halves.

best street
in neighborhood

some can find many
others from

Butterberg and
Cause of white

15 yrs in district
it has deteriorated
amalgam
work has
sent up from Beckler
down river

built after fellow
with

No. Rms. Class. OCCUPATION, &c. Wife. Children. 3-13 -3 Others in Family. POSITION.

No. Rms. Class. OCCUPATION, &c. Wife. Children. 3-13 -3 Others in Family. POSITION.

not 10 of me
in this district
houses get bare
Saw
Saw

charges only
F-105

Pontre Street

5 room

No.	Rms.	Class.	OCCUPATION, &c.	Wife.	Children. 3-13	-3	Others in Family.	POSITION.
1			(Lump) / bro	-	1			cl dist scout
2		C	Trailer Cann	dr	3			fus rem resp
3			" Gen De Cann	dr	2			resp.
4			Jat keep S.W.	Dr trique	5			22. resp 30? good home resp
5			Cann		2			"
6			L Carp		1			"
7			Cellom	resp	3			36 over and resp 15 yrs 11 or 12 ch left
8			Carp	2nd	4			av
9			L		3			fair
10			Gas Sltk BKL		2			prtty resp
11		C	mid the foam Clog mber old		2			1 deformed poor
12			L	resp	1			
13			Bill post Cann		4			worky agt fun.
14			Butch ypr Cann	Shatt charter	2			2
14			Gas Sltk		6			by resp

No.	Rms.	Class.	OCCUPATION, &c	Wife.	Children 3-13	-3	Others in Family.	POSITION.
15			Coster L R	help dr	1 3			had pony reformed father patron



mean as good as Everett Steel
people move from one to other
Cann
Howlett contractor
20 employes those who made
his houses.

No.	Rms.	Class.	OCCUPATION, &c.	Wife.	Children. 3-13	-3	Others in Family.	POSITION.
-----	------	--------	-----------------	-------	-------------------	----	-------------------------	-----------

No.	Rms.	Class.	OCCUPATION, &c.	Wife.	Children. 3-13	-3	Others in Family.	POSITION.
-----	------	--------	-----------------	-------	-------------------	----	-------------------------	-----------

||||| |||||

Gas 1/2
5/4 and

644
1364 children
in Q

No. Rms. Class. OCCUPATION, &c. Wife. Children. 3-13 -3 Others in Family. POSITION.

No. Rms. Class. OCCUPATION, &c. Wife. Children 3-13 -3 Others in Family. POSITION.

Ⓟ

A B C D E F G

Moat St			5	6	8	2		21	
Hames	1	1	7	14	17	9	1	50	
Arden			10	14	15	4		43	
Cherwell			2	3	4			9	
Ceylon		1		4	24	6		35	
Sheaford			5	17	14	9		45	
7 oak's Row			1	2	1			4	
Clifton Cott				2	2	2		6	
Ascaln St		1	5	11	7	4		28	
Aegis Row		2	4	13	6	1		26	
New Rd		1		5	16	12		34	
Ascaln St			2	25	30	5		62	
Savona St		5	22	25	13			65	
Tudmore		2		4	7	2		15	
Tudmore				5	10	3		18	
Sheldrick			1	2	7			10	
Selda St		1		2	8	2		13	
Savona Pl		3	3	3	6	2		17	
New Cott				3	4			7	
Balt Pl Row				6	12	16	1	1	36
Stewarts Row			3	7	16	3		29	

1 17 70 173 227 82 2 1 573

No.	Rms.	Class.	OCCUPATION, &c.	Wife.	Children.		Others in Family.	POSITION.
					3-13	-3		

No.	Rms.	Class.	OCCUPATION, &c.	Wife.	Children		Others in Family.	POSITION.
					3-13	-3		

No.	Rms.	Class.	OCCUPATION, &c.	Wife.	Children.		Others in Family.	POSITION.
					3-13	-3		

No.	Rms.	Class.	OCCUPATION, &c	Wife.	Children		Others in Family.	POSITION.
					3-13	-3		

No. Rms. Class. OCCUPATION, &c. Wife. Children. Others in Family. POSITION.

3-13 -3

711

W. England.

No. Rms. Class. OCCUPATION, &c. Wife. Children. Others in Family. POSITION.

3-13 -3

113

Mr Dalton 26th July

No.	Rms.	Class.	OCCUPATION, &c.	Wife.	Children.		Others in Family.	POSITION.
					3-13	-3		
Thurlow Street. (poor as 20/-)								
1								
3	2		Painter			1		resp.
	2		Plasterer			2		
5		18-20	Night Porter			2		
7			Plasterer.	char.		4	1	1 subject & others
9		20/-	Blind maker.			1		
11		19-25	Coal Porter.			1		1
13								
15		18-25	Ry Porter			4	1	
17	2	25	Drayman			1		stepchild.
	2		Manager of Toy warehouse			2		
19			Striker			3	1	
21			L gen			3		
23		30/-	Time keeper			4	2	resp.
25		25	Police man			3	1	resp.
27			Carp.			3	1	resp.
29	2		Painter				1	
	2		Carpenter			1		
31								
33		30-40	R Qd			3	1	resp.
2								
4								
6			Coachman			3	1	sickly
8								resp

Penbury who lets reside hall.

No factories other.

No.	Rms.	Class.	OCCUPATION, &c.	Wife.	Children		Others in Family.	POSITION.
					3-13	-3		
10								
12			R Qd.			5	1	cl. diff. and 2 others
14						1		illeg.
16			Baker			3	2	
18			Ry P			1	1	
20			Carpenter			4	3	gone to Wotton.
22			Packer.			1		(W. 1st)
24								
26								
28		2	E fitt			2	1	good
30			L. Ry.			4		good. only work.
32			Brewer's Lad			3		
33		21	Scenic Artist				1	works London. and
34			L			2		
36			L			1	1	
38			R Qd.			2	2	
4			Brewer's L.			1		

very respectable. shocked by the unpaid

Stewart's Road.				other side		Worse			
No.	Rms.	Class.	OCCUPATION, &c.	Wife.	Children.	Others in Family.	POSITION.		
	step		\$28 \$30 \$32.	8	3-13	-3	basement kitchen + 2 stores		
26		E9	Summer empl.		2				
		D4	L gw		2				
28		E7	Plumber		3				
		B34		W needle	2				
30					-				
32		E7	Decorator		5				
			Stoker				8.		
34		E19	Plate cleaner club.		1				
3		B31	Gas meter maker		4	1	all		
36									
38	24	F25	Green shop.		1	1	empl 2.		
42		F27	Public Ho				empl. 2.		
44		E24	Ordn. Shop.	helps	6	1	no empl.		
46		B33		W washer.	3				
48		C3	L		1	1			
		E7	St Mason.		2	1			
50		E8	C Pten		4		8.		
52	3	D4	L		2	1			
	2	D4	L			2			
	3	E7	Pls.		3	1			
54		F19	Eng surv		2		berth.		
56		F23	Butcher shop		2	1	empl boy.		
		E37	Carp works for himself		3				
58					-				
60		E13	Carr Exam Ry.		2				

Stewart's Road									
No.	Rms.	Class.	OCCUPATION, &c	Wife.	Children	Others in Family.	POSITION.		
					3-13	-3			
62		E7	Gas fitt.		1	1			
64					-				
66		D4	L. Ry		5	1			
		B33		W Chair	1				
68		D15	Portman.		3	1			
70		E11	Tailor works out.		2				
72		D4	L		2	1			
74		F13	Eng D		2				
7		D4	L &		3				
76		E12	Bottle (barrel)	sells 8 beer.	2	1			
78				W Chair					smaller ho.
		C3	L		4	1			
80		E18	Mess ^r sur.		1				
			Painter		1	1			
82					-				
84					-				
86					-				
88		E11	Tailor 1 year.		2				
90			L		2				
92		F9	Eng Fitt		3	1			
		C3	L		1				
94			Public Ho small		-				
94a		F9	Eng fitt		1	2			small.
96		F9	Boiler Sur		1	1			eng.
98		E12	Baker 1 year		1				rather large house
		E5	Plaza		4				

117 #

W better than E side often rough but on whole respectable. 20-5.

Ang D line 301-45.

119 X

3	No.	Rms.	Class.	OCCUPATION, &c.	Wife.	Children.		Others in Family.	POSITION.
						3-13	-3		
				Stewart's Road.					
	100	3	D8	Coach pte Ass't		3			
		3	D4	L ry		4			
	102		E9	Bell Sm		2			yrsp.
	104		E8	Sawyer		1		3	yr
	106		E10	Compositor		4			all houses from here all brown
	108	3	E16	Police.		1	1		30 27
	110	3	E8	Sawyer		2	1		
		3	E7	Pter		2			
		3	D4	L		2	2		
	112		E9	Carv Fitter		5	1		
	114		F15	Butcher					resp. put some time as much as neighbors.
	116	3	E13	Fireman.		3	1		
			E19	Tailor		2			Does not sleep
	118		E7	St Mason		1			
	120	2	F9	Engineer		3	1		
		2	D4	Cabman.		2			
		2	B33		W char	2			
		2	C3	L		2			
	122		E11	Cutter at Pumphs		1			
			D4	L		1			
	124		E13	Ang D		5	2		
		1	E7	St M		1			
	126		F9	Eng 7		1			
			D4	Ostler		2	1		
	128		B	Ho Agent					well to do

No.	Rms.	Class.	OCCUPATION, &c.	Wife.	Children		Others in Family.	POSITION.
					3-13	-3		
			Stewart's Road.					
130								
132		E3	L			1		
		E7	Bk Layer		4	1		
134		E10	Electrician SWR		1	1		
136		D4	Lab.		4	1		ch well kept
138		E13	Stoker. SWR		2			
		E9	Eng.		5			
140	2	B33		W washer	2			
	2	F9	Eng		1	1		
	2	C28	Adv. Carv		3	1		im.
144		D4	L		1	1		
		C33		W.	1			resp.
146								
148		E14	Horse keeper.		1			
150		C3	L		4	1		
152		E10	Carbon Cutter		3	1		
		E19	Bootmaker.		4			
		D4	L		2	1		
154		F9	Eng Fitter.		2	2		
		E7	St M		1	1		
156		B33		W	2			
		E15	Cheese m Ass't	3	1			
158		F13	Ang D		1			
		E7	Corp.		3			
160		F28	Clerk		4			resp. many years

Stewart's Road.

5 No.	Rms.	Class.	OCCUPATION, &c.	Wife.	Children.		Others in Family.	POSITION.
					3-13	-3		
162		E 8	Turner wood		1			
166		E 8	Woodcarver		3			8
		E 9	B Sm		1			
168		C 3	L		4	2		
170		E 9	Eng		1	1		
172		E 9	Whitesm		3	2		
174		B 31	Circus man	works also act	2			only prob holes blurred at home
		D 4	Lab.		3			resp
176	3	E 7	Sm		3			
	3	E 28	Clerk		2	1		
178		E 9	Melter at S.W.R.		1			used to keep shop family well off.
180	2	B 28	Clerk		2			
	2	E 10	Jeweller		1			
	2	C 8	Joiner		1			
182		E 8	Laundry	works	3	1		empl 5?
184		F	Eng.		3			
		E 7	Pter		1			
		E 7	Plast.		1	1		
186		E 28	Traveller		2			
		E 15	Cellarman		1			
188	skat	E 3	L		1			
190		D 4	L ww		1			
		E 7	Carp		5			
192		E 5	Walter		1		24	
194		E 9	Eng att Furbush B		2			here boundary B att

106
 105
 104
 103
 102
 101
 100
 99
 98
 97
 96
 95
 94
 93
 92
 91
 90
 89
 88
 87
 86
 85
 84
 83
 82
 81
 80
 79
 78
 77
 76
 75
 74
 73
 72
 71
 70
 69
 68
 67
 66
 65
 64
 63
 62
 61
 60
 59
 58
 57
 56
 55
 54
 53
 52
 51
 50
 49
 48
 47
 46
 45
 44
 43
 42
 41
 40
 39
 38
 37
 36
 35
 34
 33
 32
 31
 30
 29
 28
 27
 26
 25
 24
 23
 22
 21
 20
 19
 18
 17
 16
 15
 14
 13
 12
 11
 10
 9
 8
 7
 6
 5
 4
 3
 2
 1
 0

Little Street.

No.	Rms.	Class.	OCCUPATION, &c.	Wife.	Children		Others in Family.	POSITION.
					3-13	-3		
2		C 3	L		1			8/9 - pink for 4 rooms 4 rooms seloon-empl old.
4		B 33		W dears	4			resp
6		C 3	L		3	1		
8		B 33		W	1			
10			C Port			2		
		C 3	L		1	1		
12		E 8	Turner Latter		1			
14								
16			Sugar Factory				wooden.	employ.
18		C 3	L		3			
		B 13	Ry fo		4			plead proof
20		E 13	Ry fo		1	2		
		E 9	Hammer		1	1		even ho. small best cat.
22		C 23	Gen D		4	2		
24		D 4	L sugar		5	1		
		C 3	L		2	1		
26		C 3	L		3			
28		D 4	L		1	1		
30								
32		E 7	Plast.		1			
34			Gen Shop.					lodgers
38		C 3	L		2			
40								
42		C 3	L		3	1		
44		D 4	L		1			
		E 9	Bks		2	2		2 steps etc.

Blue & Black
36

Linford Street				2 out 8 -		Children.	Others in Family.	POSITION.
No.	Rms.	Class.	OCCUPATION, &c.	Wife.	3-13			
46		C 3	Eng D		2	1		
48		E 13	Eng D		4			
50		E 13	Eng D		5	1		
52	2	C 3	L		3	1		
	2	C 3	C Porter		2			
54		C 3	L		2			
56		C 7	P Hanger		3		in	
		D 4	Camer		2			
58			L			1		
60		D 5	Stoker gen		5	1	storing	
62		D 38		W in dep't	1			
64			empty					
66	2	E 5	Eng D. notably		4			
68	2	B 34		W needle	4		ind in repl	
70			gen shop					
70		B 18	Chaff cutter		2			
72		D 4	Platelayer		3	1	ch. work	
74		C 7	plm		2	1		
76		C 3	S.M. Lab.		2			
		E 10	Leathe Dress		4			
78		E 9	Eng Fitter		2			
80		C 3	L		4	1		
Culpha Cottage			Hammer			1		
Clay Cott		B 33		Des chairs	4	1	Partial rel	

Linford Street				women	elderly	by hopping	B who or with
No.	Rms.	Class.	OCCUPATION, &c	2 Squares Wife.	Children	Others in Family.	POSITION.
					3-13	-3	
Oakholt							
1							
2		C 3	L		3		
3		B 22	Costum also Glass of funds	Spec will care	3	1	pony step
Leamington Terrace (pt of Linford St)							(rather better houses) prob 6 rooms
1							
3		C 14	House K		3	2	
		B 33		W washes	3		ind 2 in kitchen
		E 5	C Port		1	1	
5			empty				
7		C 22	glass cutter in street		2	2	
8		E 10	Potter		3		
			L			1	
9		E 20	Wood Contractor (hug shop)		4	1	
Linford Street							
25							
27		B 34	Dress m	W	1		
		D 4	Camer		2		
		C 22	Costum		1		
29		D 4	Camer		2	1	
31		C 3	L		2	2	
		B 9	Hammer		5		

8
123

Linford Street

No.	Rms.	Class.	OCCUPATION, &c.	Wife.	Children.		Others in Family.	POSITION.
					3-13	-3		
33			-					
35			-					
37	B3	2			5	1		
39			-					
41	E7		Brickl		1			
43	C3	2			3	2		
45	E5		Stoker gw		1			
47	C22		Costerm		2			barrow
	C22		Costerm		1	1		
49	E5		Stoker gw		3	1		
51	C3		Labourer dock		3			
	1 B33			single washer dau.	1			
53			empty					
55	E10		Dressng Case m		3			resp. for sh
			works away					
57	C3		Costerm		1			
	C3		2		1			
59	E5		Photo layer		4	1		
61			Sawyer		1			steam? on mill
	D10		Clott. Presser		1		172	

D	C	D	E	F
18	30	12	18	1
16	24	12	16	1

B2.
+ 8

Seymour Street (even smaller than Linford Street)

No.	Rms.	Class.	OCCUPATION, &c.	Wife.	Children		Others in Family.	POSITION.
					3-13	-3		
1			Cost					
3	A19		Bostrm		1			loafs pulled
4	C22		Costerm		1			
5			-					barrow
6	C22		Costerm		1			
7	C7		Bkl L		2			
8	C22		Costerm		2			
9	B22		Costerm		4	1		
10	B35		Wood Dealer disp		1			
10	C3		C Park			1		
11	C22		Costerm		2			small 4 hap. board prng
12	C3		2		5			

Seymour Street (same: a little bigger ho)

1	D4		Carman		2	1		
2	C3		2		3	1		
3	E9		Bkl Sm		1			
4			-					
5	E10		Tile layer (pavement)		1			
6	C3		2		3	1		25

A	B	C	D	E
1	2	8	1	2
1	4	6	1	2

B.
+ 2

125

Elizabeth Terrace (smaller than Stewarts Rd better than Fairfield St.)
 No. Rms. Class. OCCUPATION, &c. Wife. Children. Others in Family. POSITION.
 3-13-33
 Respectable but not of large £20-25

No.	Rms.	Class.	OCCUPATION, &c.	Wife.	Children.	Others in Family.	POSITION.
1	E 9	Bk S	Packing Case M w avg	1	1		
2	B 31	No occ	ill once position	4			
	E 5	Stoker		3	1		
3	D 13	Ry Sawt		1			
	C 3	Stoker gw		1	1		
4	D 13	Ry P		3	2		
5							
6	E 9	Iron M ^{lbr}		2			
7	E 9	Turner	less	3	2		
8	D 13	Carr washer		1			

Corunna Terrace (opp 2nd (same St) ho. a little larger basement - add. steps)

Stone Yard. employs my hands.

No.	Rms.	Class.	OCCUPATION, &c.	Wife.	Children.	Others in Family.	POSITION.
Cottage	E 7	St sawyer		2	1		
1	C 3	Blaze Lab		3	1		
2	C 3	Waterman		2	1		
3	E 9	Hammerm		2	1		
4	D 4	L.		5	1		
5	C 3	L		1	1		
	D 4	any pens		3	1		
6	E 16	Police Ry		3			
7	C 14	Horse K		4	1		
	D 4	Carman		4	2		

Corunna Place (much as Eliz Pl.)
 No. Rms. Class. OCCUPATION, &c. Wife. Children. Others in Family. POSITION.
 3-13-33

No.	Rms.	Class.	OCCUPATION, &c.	Wife.	Children.	Others in Family.	POSITION.
1							
2	E 5	Stoker			2	1	
3	E 10a	Comp			3		
4	C 3	Painter.			1	2	Turn
5	B 33			W washer	3		
		L				1	
6		L				1	
	E 10	Machineist	infact.		1	2	
	D 12	Baker	ppm		3	1	
7	E 9	Hammer			2		
8							
9	D 4	Carman			4	2	
10	D 4	Platel.			3	1	
	E 13	Ry Cpl			2	1	
11	E 8	Timber cutter	Samper?		2		
12	C 3	Bk L			5	1	
	C 3	L			4	1	

	B	C	S ³	D	S	E	
E T	1	(1)	(3)	(4)			9
C T		(4)	(3)	(3)			10
C PL	1	3	3	6			13
	2	8	9	13			32

12
127

13 Silverthorne Road 13 - 15/6 weeks

No.	Rms.	Class.	OCCUPATION, &c	Wife.	Children. 3-13	Others in Family.	POSITION.
24							
26							
28							
29							
30	E 24		Genshop		3		does not accept
31			St m		3		
			St m		2		
32							
33	E 7		Carp		4	1	
34	F 28		Ho. Ag.		1		
35	E 10		Elect.		4	1	
36	F 7		Eng.		1		
3			Parents Ass ^y		1		
37	F 28		Ho Agent		1	1	
38	F 7		Blk layer		3		
			E 7 Carp		2		
39			Empty				
40	E 15		Cellarman		1		
41	D 18		Stallman		1	1	prob lodgers?
42	F 7		Carp.		1	1	
43							
44							
45	E 8		Wheelwr		1		
46			Comp			1	
47	D 33			W			lodgers
48	E 28		Manager		1		
	E 28		Munici. p.		1		

BI

36

Silverthorne Road 26 July 74 129

No.	Rms.	Class.	OCCUPATION, &c	Wife.	Children 3-13	-3	Others in Family.	POSITION.
49	E 13		Rf gi		1			
5			Boys Bdr			1		
50								
51	E 15		Outfitter.		1	1		
52	F 7		Carp		1	1		
5								

better class than Stewart's Road.
rents higher.
lodgers

(like Trollope.)

13/ 14/

27

D	E	F	
1	10	5	16
1	9	6	<u>16</u>

15 Froude Street

2 doors to each side
one leading upstairs, one down
all 3 rooms to east

~~27 July~~
Pink
better than Elizabeth Terr
worse than Silas

No.	Rms.	Class.	OCCUPATION, &c.	Wife.	Children. 3-13	Others in Family.	POSITION.
1 r	C 7		Carp		1		
1 l	E 5		Drayman Brms		3	1	
2 r	E 12		Baker		1		
2 l	F 17		Butler gen		2		1
3 r							
3 l	D 4		Carmans		1	1	
4 r	D 13		R Porter food E 29 E 29 E 29		1	1	
4 l	C 7		Pbr		4	1	
5 r	E 18		Mess ^r		1	1	
5 l			Coachman gen			1	
6 r	E 28		Trav		2		
6 l	E 7		Plbr		4		
7 r	E 15		Gen. Ass ^t AN		2		
7 l	D 16		Postman		5	1	
8 r							
8 l							
9 r	E 7		Bklyr		2		
9 l	E 7		Plbr		3	1	
10 r	E 7		Carp		4	1	
10 l	C 7		Pbr		1	1	
11 r	E 9		Fitter		5	1	
11 l	E 12		Baker		3		
12 r	F 13		Gen D		3	2	
12 l			C Po			1	

Some improv & drain. Froude Street

No. Rms. Class. OCCUPATION, &c. Wife. Children 3-13 -3 Others in Family. POSITION.

13 r	2	E 32	Ret ^d Publ. No occ.	2	2	1	
13 l							
14 r		C 28	Clerk irr Pbr		6		out of work travelling
15 r						1	
16 r		C 18	Musician		5	1	improv
17 r		E 10	Bell hanger		1	1	
18 r		E 8	Coach body maker CO		2	1	
19 r		E 15	Hosier Ass ^t		2		
20 r		E 12	Cook Postman		4	2	
21 r							
22 r		E 7	Carp		5	1	
23 r		E 12	Baker		2	2	

105 d

B C D E F G
5 3 18 1 18

27
N

76
131

76

Dickens Street (like Silworth.)

No.	Rms.	Class.	Occupation, &c.	Wife.	Children.		Others in Family.	Position.
					3-13	-3		
1			empty premises					
2	27		Carp					
3	19		Tailor at home for his					
4	16		Customs Officer				resp.	
5	3 27		St M					
'	3 27		St M		1			
6	28		Clk		2			
7	19		Tailor at home for his			1		
8								
9	13		Rf Gr		1	1		
10								
11								
12	13		Eng D		2			
13	15		Hair D Ass ^t and		2			
	9		Eng.		2			
14	9		Eng Turner		5			
15			empty					
16	28		Rec ^d Clk Brie Fac ^t (Queen Rd)		2			
17	29		Schoolm B.S.		3			
18					2		resp	
19					31			

E F G
11 2 1
N

Rushin Street. much as Dickens St.

No.	Rms.	Class.	Occupation, &c.	Wife.	Children		Others in Family.	Position.
					3-13	-3		
1			empty					
2								
3		D 13	Food Po		2	1		
4		E 7	Plumb		2			
5	3	E 5	Carrm		1	2		
	3	E 5	Stoker		5			
6			Rf Po			1		
7		F 13	Eng D		5			
8		F 16	Timk Ho Pealmt		4	1		
9		D 15	Cheese Ass ^t		5	1		
10		F 13	Eng D		1	1		
		E 7	Carp		2			
11								
12						1		
13		C 7	Pter		3	1		
14			Printer			1		
		C 7	Painter		2			
15			empty					
16	3	E 10	Line Man tele		2	1		
17	3	E 10	Line Man			1		
17	3		Shunter			1		
1	3	E 13	Signalr		2			
18	3	E 8	Coach ^{er}		2			
	3	E 28	Trav		4			

42 C D E F = 15
2 2 8 3 = 15

133

Trollope St. Same as Ruskin St.		Pink		Children.		Others in Family.		POSITION.
No.	Rms.	Class.	OCCUPATION, &c.	Wife.	3-13	-3		
1		E 9	Boilermk		2	1		
2		E 11	Tailor		1	1		
3-5			empt.					repairs difficult, more now than before.
6		E 5	Watch Po		3			
7-10			empt.					seen in good cond.
11-14			—					
15	3	E 16	Commissioner		3			
	3	E 7	Carp.		2			
16		E 5	Watch ASN		2			
17	3	D 4	L		3			
	3	E 10	Organ builder		1	1		
18		D 33	lodg.	W char	3	1		resp. (opposite side)
19			Plb			2		
20		E 7	Joiner		3	1		
21		E 9	Fitt		2	1		
21		E 9	Fitt			1		
		E 9	Fitt		1			
22		D 14	Horsek		2			
23	3	E 5	Po ASN		3			
	3	E 7	Po Buck Pal		3	1		
24		C 28	Trav		5			upon.
25		E 7	Carp.		2			
26		E 18	Supint Baths		1			
27	3	E 9	Tim Plater		2			
	3	E 9	Boilerm		1			

Trollope Street				Children		Others in Family.		POSITION.
No.	Rms.	Class.	OCCUPATION, &c	Wife.	3-13	-3		
28		F 6	Blvd's Forem		6			
29			—		—			
30		E 5	Carm		2			
31		C 3	Lab		2	1		
?		D 4	L		1			
32		D 4	Ry Po		2	1		
33		E 10	Terrace Cott Doult		1			
34-5			empt.					
36		E 18	Farrier		5			

C D E F
B S 18 2

27

22
135

Robertson Street East *Pink* 11/12/ 6 rms.

21 No. Rms. Class. Same as Silverth. OCCUPATION, &c. Wife. Children. 3-13 -3 Others in Family. POSITION.

1 E28 Trav 2

2 E9 B Sm 3 2

3 E7 Pter 3

4 C33 *w* *mangles.* 3

5 E13 Forem R. 3 1

E13 Forem R 1 1

6 - - -

7 - - -

8 E9 Copper sm 1 1

9 - - -

10 E19 Tailor at home fisho 4

11 E17 Gas fitt 1 1

12 - - -

13 3 E13 Eng D. 1 1

3 D4 L 2 1

14 - - -

15 3 E13 Eng D 3 1

1 3 E13 R/P 1

16 E13 Eng D 2

Eng Fitt 1

17 E9 Copper sm 1

18 E13 Forem R 2 1

19 - - -

20 E7 Decoat 1

21 E13 Forem R 1

1-5 2 storeys
6-11 bigger 3 st
12- 2 st.

Robertson Street East 22 137

No. Rms. Class. OCCUPATION, &c. Wife. Children 3-13 -3 Others in Family. POSITION.

22 E9 Whitesm 1

23 E17 Club Serv 1

24 E7 Pter 1

E18 Gard 1 1

25 E9 B Sm 1

26 E12 Vinegar m (Beauty) 2 1

27 E19 Bootm at home 3

28 D4 L 4 1

29 L 1

30 - - -

31 Gen Shop door with linn

2 E7 Plaster 2

3 E5 Excavator 2 1

32 empty for 2 months

33 E10 Tallow mltz 1

34 E28 Clk 2

35 E8 Coccol yd 2

36 empty

36 E28 Fish. Sales m at mkt 2

37 Blk sm 2

37 E7 Blk yd 4 1

38 Carp 1

39 E10 Glass cutter. 1 *emp.*

39 E7 Plumber 1 2

40 Plb 1

E7 Carp 3 1

23 Robertson Street East

No.	Rms.	Class.	Occupation, &c.	Wife.	Children.		Others in Family.	Position.
					3-13	-3		
41	E5		Liftman washes		5	1		
	D4		L. Ry		2			
42	empty							
43	E9		Eng		4			
44	F28		Club ho Supt		3			resp
45	E10		Painter		3			
46	E8		Joiner		1			
47			Ry Po			1		
L	E7		Pter		1	1		
48	E7		Dec		1			
49	empty.							

B C D E F
2 3 37 2
40

S^t Andrew Street hse 6-11 Robertson Street

No.	Rms.	Class.	Occupation, &c.	Wife.	Children		Others in Family.	Position.
					3-13	-3		
50			best ho for size not for class Silverth. more resp, with S, same of resp					
50	E10		Upholst		3	2		50-54 smaller b rooms
52								
54			Eng D			1		
5	F13		Eng D		2			
56			Gen Shop					bigger 2nd fl
	F9		Blk Sm Gen Shop		1			
	E9		Blk Sm		2			
	D4		L		1	1		
58	empty							
60	E11		Boston not other		1			
	E9		Carv Sm		1			
	D12		Milliner and		1	1		
62	E7		Plb		3	1		
64	empty							
66	C3		L Baker		1	1		
	D4		L		1			
68, 70	empty							
72	E11		Taylor		4	2		
	D12		Baker		2			
74	F27		Public ho		1			empt. 203
1			Gen Shop					

139

25 S: Andrew Street

No.	Rms.	Class.	OCCUPATION, &c.	Wife.	Children.		Others in Family.	POSITION.
					3-13	-3		
325	empty							
7	D15		Barman		1	1		
	D3b				W	1		
	C33		Bar		nurse	1		
9	E13		Eng D		4			
	C3		L		1			
11	B33			W	1	1	others in ho with no children.	
				occ	occ			
13	E15		Hair dr		1	1		
	E15		Poulterer		4			
15	D4		L part		4	1		
	E7		Gasfitt		2	1		
17 19	empty							
21	E7		Carp.		4	1		
	E5		Shop Po		3	1		
23	C7		Pter		2			
			lodger					
25	E11		Baker		2			
	E33			W	1			
				at home				
27	E7		Plb		1	1		
	E7		Pter		1			
	E14		Bus driver		1			
29					-			
31	E7		Plb		2	1	other lodger	
33	E28		Waggoner		1			
35			Greenfo (shop)		-			
	D4		Carman		1			
					1	4	9	18
					B	C	D	E
					1	1	1	1
					1	1	1	1

35

Motley Street

No.	Rms.	Class.	OCCUPATION, &c.	Wife.	Children.		Others in Family.	POSITION.
					3-13	-3		
								26
								141
								highly respectable class better than S 4 St
								6 rooms ho.
1			Pter			1		other lodg.
2	E13		Eng D		4	2		
	B33			W	1	2		
				widow				
3	E8		Cooper		2	1		other lodg.
4	F13		Eng D		2	3	twins	
	E13		R Po		1			
5	E7		Bkl		1			
6	D13		Po good R		1			
7			L drink to class.			1		other lodg.
8					-			
9			Police		2	2		
10	E8		Carp		4			
			Curr clean R			1		
11	B33			W	1			
12	E22		Coal merchant		4	2		lodger at St. with father
13	E15		Drapery		1			
13	E7		Plb		1	1		
14	E7		Scaffolder		5	1		
14a			Shop Po			1		
	E7		Pter		1	1		
15	E7		Bkl		3	1		
	E28		Clerk		3	1		
16			ptn		2	1		
	E7		ptn		4	1		

27

Molley Street

No.	Rms.	Class.	OCCUPATION, &c.	Wife.	Children.		Others in Family.	POSITION.
					3-13	-3		
17	4	E8	Wheeler		4			
	2		Coppersmith			1		
18		F7	Bklyr		1			lodgers.
19			R Gd		1			
20		D16	Police		3	1		
21			-		-			
22			-		-			
23		D9	Brass fin		5	2		
24		E5	Washer		3	1		
2		C3	L		1	1		
25		D4	Eng Lab		1			
		E7	Pter		4	1		
26			Butler		2	2		
		E13	Butler		1	1		
27		E13	Engineer		1	1		
28		E13	Rf G		1			
29			-		-			
30			-		-			
31			-		-			
32		E13	R Po		1			
		D16	Police		1			
33		E13	Carr Lifter		2			
34			Police			1		
		D4	L		1	1		
35			-		-			
36		F10	Lithog		1			
		E13	Eng D		2	1		

Molley Street

most 2 fam.

28

143

No.	Rms.	Class.	OCCUPATION, &c.	Wife.	Children		Others in Family.	POSITION.
					3-13	-3		
37		E18	Porter St Paul Hall		1			
		D4	L R		4			
38		E13	Eng D		2	1		
		D13	Barber		1	1		
39		E7	Pter		2			
			Police			2		
40		D4	L		2			
		E13	Form R		1	2		
41		F13	Eng D		3			
			Book binder			1		
42		E16	Police		3			
43		D4	L		1	2		
		E7	Dec		2	1		
44		E37		W noice	3			
		E13	R Po		2			
45		F9	Fitt		1			lodgers.
46		E5	L. sw		3			
		D4	L		1	1		
47		F13	Rf G		2			wholesaler
48		E7	Pter		4	1		
		E11	Baker		2	1		
49		E9	Eng		2			
50		E5	Carr		2			
		E8	Coachbody		2			
51			-		-			2 fam

Molley Street

No.	Rms.	Class.	OCCUPATION, &c.	Wife.	Children.		Others in Family.	POSITION.
					3-13	-3		
52		F18	Waiter club		3			Pho ^{wh}
53		F13	Eng D		1			
54		E13	Ticket Ex rly		1	1		
54		E28	Clerk		5			
55					-			
56					-			
57		F7	Carp		3			
		E5	Coal Po		2	1		
58		E28	Clerk		2		2	
59		D9	Brass fin		6			
59		F18	Butler		3			
60					-			
61		E9	Eng		1	2		
62		E12	Confect		1	2		
63		F9	Fitter		3	1		
64		E13	Wk Gd		2	1		
65		E9	Eng fitt		4	1		
66					-			lodg.
67			Forin			1		
		E7	Paperh		2			
68		E15	Green's Ass ^l		1	2		
69		F13	Ry G		3	1		whistle
70					-			
71		C3	L		1			others

Molley Street

No.	Rms.	Class.	OCCUPATION, &c.	Wife.	Children		Others in Family.	POSITION.
					3-13	-3		
72		E13	R Po		1			
73					-			lio resp w.
74		E7	Ho Dec		3	1		
75		D37		W at ho.	1			
		E15	Drapers Asst		1			
76		E13	R Gd		2	1		
77					-			
78		C7	Pter		5	1		single men lodg. others
79		E25	clk		1	1		
80			L.			1		
81		E13	Eng D		4	1		
81		E13	Eng D		2	1		
82		E11	Tailor		2	2		
82			clk		2	2		
83			Baker			2		
		E13	R Po		3			

Molley Place (pt of M. Street)

1		F28	Manag Pub Ho		3	1		
		E5	Sto		4	1		
2		E7	Carp		1	2		
		D4	L		2	2		
3			P.C.			1		
4		E9	Eng		3			

31

No.	Rms.	Class.	OCCUPATION, &c.	Wife.	Children.		Others in Family.	POSITION.
					3-13	-3		

5			E13 Ry Cr		1	1		
6			-		-	-		whole ho.

201

B	C	D	E	R	9
1	5	13	62	10	

91

Portslade Road ~~Pink~~ Purple

32

No.	Rms.	Class.	OCCUPATION, &c.	Wife.	Children.		Others in Family.	POSITION.
					3-13	-3		

most resp. small b.r. 81-91-2001
 tufts better than from other streets, worse than other ho.

8			D4 L		3	1		
			C14 Cabman		3			ho.
9			D9 Blk Sm		5	1		ho.
			E7 Carp		4			
10			E10 Painter		1	1		
			E16 Comm. a/c		5	1		
11			C3 L		3			
			Shunter		7	1		
12			E18 Fawcett		6	2		ho.
13			D4 Lampd.		2	1		
			E9 Zinc work		4	1		
14			C3 L		3	1		ho.
15			R Po			1		
			R Po			2		
16			E12 Baker		1	2		
			E9 Hamer		2	1		
17			E28 Clerk		1			ho.
18			Pter			1		
			E9 Wire fence		3	1		
19			C9 Iron Mo		2	2		
			Police			1		
			D16 Pol.		2	2		

147

33 Portside Road

No.	Rms.	Class.	OCCUPATION, &c.	Wife.	Children.		Others in Family.	POSITION.
					3-13	-3		
20	E7		Plast		4	2		
2	C3		Windrod		1			
21	D13		R Po		1			Dr lady
22	D4		Player		3			halfcaste prob ovs
23	D4		Player Carmen		4	1		
24	E12		Baker		5	1		
25	E13		R Gd		3	2		
	E13		R Gd		4			
26	C3		L wharf		5			
27	C3		L		3			
	E5		Coal Po		4	1		
28	C3		L		2			
	D4		Horse k		1			
29	E18		Furrier		2			
	D4		Corman		2	1		
	D4		Corman		2			

96
 15 C D E F
 8 10 15
 33
 N

34 Jonsalva Road. Purple 600
 like Portside Children Others in Family. POSITION.

No.	Rms.	Class.	OCCUPATION, &c.	Wife.	Children		Others in Family.	POSITION.
					3-13	-3		
13	E13		R Po		4	1		
15	D4		Pl L		1	1		
	B33		?	W chan	2			
17	E24		free sho shop	keep	3			husb with cont.
	E13		Ry Gd		1	2		
19	E9		Carr fitt		5	1		
21	D4		Pl L		3			
	D4		L Ry		3	1		
23			Ang D Compos			2		
25			-					
27	E13		Fireman		1	2		
	C3		L		3			
29			Forem			1		
	D16		Police		4	4		
31	D13		Ry Po		1	1		
	E13		Ry Gd		2	1		
33	D16		Police		2			
35	C33			W mayle	3			lady.
37	D4		Corman		5	2		
39	E7		Plter		1	2		
	D16		Police		1	1		
41			Cooper			1		
	E7		Stone M		2	1		
43	E13		R Po		3	1		

34
 149

Gonsalva Road

No.	Rms.	Class.	OCCUPATION, &c.	Wife.	Children.		Others in Family.	POSITION.
					3-13	-3		
45	E7		Carp		4			A
47					-			
49	F13		Ry Gro		1	1		
51	E18		Butler		2			
53	D13		R Po		5	1		
'	E13		Carr Seaman		3	1		
55	E13		Eng D		3			
	E13		- Ry.		3			
57					-			
59	E22		Coal merch		1			Trolley North St.
no houses								
73	C3		L		1			
	D4		Sweet Port.		1			
75	D4		Van Driver		1	1		
	E13		Ry Serv		3			
77	C3		L		6			
79	D4		L		1			
81	E16		Police		3			
	E16		Police		1			
83	D16		Police		1	1		
	D13		Shunter		2	1		
85	E13		Signalman		3	1		
	D33			W Vick every m.	2			
87	E7		Plb		2	1		
	D4		Plbr		1	1		

Gonsalva Road

No.	Rms.	Class.	OCCUPATION, &c.	Wife.	Children		Others in Family.	POSITION.
					3-13	-3		
89	D14		Hook					2
	D14		Hook	with R. lines	1	1		
18								
20	E7		Carp		2			
			Plb			1		
22			Co Po			2		
24	E13		R Po		1	1		
26	C3		Carp L		1			
	E9		Iron Founder		4	1		
28	E12		Baker		1	1		
	E18		Gard		3	2		
30	E9		Blk sm	gent	4	2		
32	E9		Eng fitt		2	2		
	D14		Ortler		3			
34	E5		Co Po		2			
36	D13		Ry Serv		2			
	D13		Shunter		1			
38	E13		R Po		3	1		
	E7		State Marsh	Misson	1	1		
40								
42	D4		Carrman		2	1		
1	E9		Eng		1			
44	C3		Lab		4	2		
	E8		Carp		1	2		

Coal Merch office
at corner of
St. Andrew Street
at the 9th

37 Gonsalves Road. ^{very few} ^{wives go out}
 No. Rms. Class. OCCUPATION, &c. Wife. Children. Others in Family. POSITION.
 3-13 -3

46	E7	Scaffolder			1	1		
48		R Po				1		
		Shunter				1		
50		-			-			
52	D4	Carpenter			5	1		
	D13	R Po			1	2		
54	E7	Carp			2			
	E9	Machinist			4	2		
56		-				1		
	E13	R Gd			3			
58	E8	Cooper			2			
60		-						
62	B33		works		1			
64	B33		works		2			
	C3	L			5	1		
66		-						
68	D13	R Po			3			
		Shunter				1		
70	E5	Carm			1			

169
 B C D E F
 3 7 24 38 1
 73
 2

Crichton Street. ^{Purple}
 No. Rms. Class. OCCUPATION, &c. Wife. Children. Others in Family. POSITION.
 3-13 -3 ³⁶

41	E 24	Fish shop helps			4	1		man goes out selling
43		free for shop helps						

not much in
 no post numerals
 the family some time ago

Wandsworth Club.
 Political.

Pullicho Street

only one in Battersea
 Washington
 Music Hall
 Wash. D.C. night

Swire Theatre
 nearest
 easy by tram.

4 169 96 201 62 89 66 42 81 16 27 83 28 171 251 1336

No.	Rms.	Class.	OCCUPATION, &c.	Wife.	Children.		Others in Family.	POSITION.
					3-13	-3		

No.	Rms.	Class.	OCCUPATION, &c.	Wife.	Children		Others in Family.	POSITION.
					3-13	-3		

	A	B	C	D	E	F	G	
Stewart Rd			7	11	18	55	15	106
Luford St			16	24	12	16	1	69
Seymour St	1		4	6	1	2		14
Comma Terrace			2	8	9	13		32
	1		29	49	40	86	16	<u>221</u>

Children

11111

526

ing

No.	Rms.	Class.	OCCUPATION, &c.	Wife.	Children.		Others in Family.	POSITION.
					3-13	-3		

No.	Rms.	Class.	OCCUPATION, &c	Wife.	Children		Others in Family.	POSITION.
					3-13	-3		

No.	Rms.	Class.	OCCUPATION, &c.	Wife.	Children.		Others in Family.	POSITION.
					3-13	-3		

No.	Rms.	Class.	OCCUPATION, &c	Wife.	Children		Others in Family.	POSITION.
					3-13	-3		

No. Rms. Class. OCCUPATION, &c. Wife. Children. Others in Family. POSITION.

$$\begin{array}{r} 966 \\ 5526 \\ \hline 4830 \\ 7160 \\ \hline 8762 \\ 8 \end{array}$$

$$\begin{array}{r} 120 \\ 103 \\ \hline 223 \end{array}$$

$$\begin{array}{r} 2898 \\ 2994 \\ \hline 5892 \\ 1932 \\ 2898 \\ \hline 30912 \end{array}$$

No. Rms. Class. OCCUPATION, &c. Wife. Children. Others in Family. POSITION.

$$\begin{array}{r} 12944 \\ 2898 \\ \hline 15842 \end{array}$$

$$\begin{array}{r} 3864 \\ 3864 \\ \hline 7728 \\ 1932 \\ \hline 9660 \\ 20286 \\ \hline 29946 \end{array}$$

$$\begin{array}{r} 127 \\ 95 \\ 92 \\ \hline 214 \end{array}$$

$$\begin{array}{r} 24150 \\ 1932 \\ \hline 26082 \end{array}$$

$$\begin{array}{r} 12558 \\ 2898 \\ \hline 15456 \end{array}$$

$$\begin{array}{r} 12558 \\ 966 \\ \hline 13524 \\ 10626 \\ \hline 24150 \end{array}$$

No.	Rms.	Class.	OCCUPATION, &c	Wife.	Children 3-13	Others in Family.	POSITION.
56940	29946						84235
9660	2898		4830		1932	3864	7728
310	590		86940		5796	3864	1932
20280	20280		45402		625968	7728	126750
9660	1932		6762		3864	7728	4830
210	47		648		125	648	125
422142	811440		456950		954408	3864	4830
6762	3864		7728		7728	7728	1932
437	840		988		472	988	472
627900	440376		200928		419244	3864	19320
48300	5796		4830		3864	2898	7728
650	456		434		208	434	208
612444	159490		305356		305356	2898	103
3864	5796		5796		966	5796	123
634	165		316		966	316	104

No.	Rms.	Class.	OCCUPATION, &c	Wife.	Children 3-13	Others in Family.	POSITION.
29946	257922		89838		1932		84235
2898	966		2898		5796	6762	39606
31	267		93		41	966	3864
399924	275316		200928		426210	4830	426210
3864	1932		19320		2898	4830	3864
966	7728		7728		4830	4830	4830
3864	285		208		435	4830	435
194266	369746		477204		87906	3864	87906
19320	966		8694		966	8694	8694
201	331		494		91	494	494
2280176	147900		280140		307188	2898	307188
1932	2898		1932		7728	966	7728
5796	4830		86940		290	86940	290
236	150		290		318	290	318

10206

No.	Rms.	Class.	OCCUPATION, &c.	Wife.	Children.		Others in Family.	POSITION.
					3-13	-3		

21252

12558

1932

2898

22

13

87

55762

157458

4830

6762

57

2898

3864

163

166

1642

48586

6762

966

17

41538

2898

43

222118

2898

23

145839

3714

8037

42339

19783

22556

84816

28420

56396

9333

1131

8202

84042

1762

7728

605

63856

56028

5796

7728

4830

66

58

166

163

46378

7728

3864

48

60958

5796

2898

63

31

No.	Rms.	Class.	OCCUPATION, &c.	Wife.	Children		Others in Family.	POSITION.
					3-13	-3		

85

76

107

99

127512

966

2898

1932

132

6762

85

35742

2898

6762

2929

966

9849797

1771034

1620831

1620563

268

145239

177,1034

15,035

96600

No. Rms. Class. OCCUPATION, &c. Wife. Children. 3-13 -3 Others in Family. POSITION.

32 10 45
 7 30 B
 20 48 C 2
 17 96 D 4
 51 21 E
 25 84 F 5
 74 54
 103 11 63
 13,188
 32

No. Rms. Class. OCCUPATION, &c. Wife. Children. 3-13 -3 Others in Family. POSITION.

46 9 96 G 2
 95 8 65 H 4
 51 13 09 I 8
 32 45 J
 82 18 24 K 9
 95 8 65 L 4
 86 8 16 5 M 5
 72 57 N
 27 00 01 O 1
 95 8 65 P 4
 31 13 49 Q 7
 20 25 R
 41 17 07 S
 37 03 66 T 8
 95 8 65 U 4
 83 06 318 V 8
 95 8 65 W 4
 87 19 72 X 4
 102 63 Y

No. Rms. Class. OCCUPATION, &c. Wife. Children. 3-13 -3 Others in Family. POSITION.

No. Rms. Class. OCCUPATION, &c. Wife. Children. 3-13 -3 Others in Family. POSITION.

29.5
668.4

621

192

547

219

200

2834768
9436383
2271151
3407924
2844367
9436383
219

1881 2403
52 66
1855 7954
227 8181

9092
958 6594

1687

1925

1881 2403
52 66
1855 7954

50553

7037447

6473830
9436383

4444

3537282

2973665
9436383

19832

22581

~~2125~~ 7701042

1258999

7137425
9436383

5173

1139898

0576281
9436383

~~6473~~

13901

8511932
9436383

11419

70990

7948365
9436383

6235

81192

9095121
8531504
9436383

~~14891~~

7131

57985

7633354
7069737
9436383

~~101145~~

5093

~~2398~~

No.	Rms.	Class.	OCCUPATION, &c.	Wife.	Children.		Others in Family.	POSITION.
					3-13	-3		

132, 72

132

177

172

146

103
95
94

No.	Rms.	Class.	OCCUPATION, &c.	Wife.	Children		Others in Family.	POSITION.
					3-13	-3		

16364

0155263

9436383
6718820

118

14316

1558259

9436383
2121876

163

47428

6760321

9436383
7323938

54

12292
878
3512

105.3.6

1989
7902

878

211

21072
1756
3502

615

594.6

91

70

878

No. Rms. Class. OCCUPATION, &c. Wife. Children. 3-13 -3 Others in Family. POSITION.

123
 9
 42
 35
 126
 126
 105
 43
 88
 38
 3754
 3512
 2634
 43
 878
 33364
 2634
 7024
 38
 878
 33726
 5279695
 9436883
 5843312
 384
 878
 7962
 79898
 75
 4390
 6146
 658.50
 878
 14
 3512
 878
 1222
 1222
 105.36
 67666
 6146
 72

No. Rms. Class. OCCUPATION, &c. Wife. Children 3-13 -3 Others in Family. POSITION.

42949
 6329472
 489
 689
 3689
 943
 6383
 2637846
 209
 3201463
 9436383
 9889613
 111
 9436383
 9453230
 3072503
 9436383
 8636120
 231
 3310281
 9436383
 3873898
 244
 3984832
 25631
 4548449
 9436383

No. Rms. Class. OCCUPATION, &c. Wife. Children. Others in Family. POSITION.

13686					1168276	1168276			
					9436383	9436383			
					1731863	1731863			
					4634663	4634663			
					9436383	9436383			
					5198280	5198280			
					3274537	3274537			
					9436383	9436383			
					3838154	3838154			
					4621522	4621522			
					9436383	9436383			
					5185139	5185139			
					2969395	2969395			
					9436383	9436383			
					33012	33012			
					6405483	6405483			
					9436383	9436383			

2634

No. Rms. Class. OCCUPATION, &c. Wife. Children 3-13 -3 Others in Family. POSITION.

1637464									
2201081									
6440088									
9436383									
1003705									
9889613									
9436383									
0458230									
4433254									
9436383									
4996871									
6695499									
9436383									
7259116									
1584821									
9436383									
2148438									

125

No. Rms. Class. OCCUPATION, &c. Wife. Children. Others in Family. POSITION.

0118242
 681859
 9436383
 117
 5302256
 9436383
 5865873
 886
 5890606
 9436383
 6454223
 442
 4827144
 9436383
 5390761
 346
 0655263
 9436383
 1218880
 1324
 8111058
 9436383
 8674675
 737
 158
 137

10276
 33902
 38821
 30389
 116286
 64730

No. Rms. Class. OCCUPATION, &c. Wife. Children. Others in Family. POSITION.

160
 114
 97
 25
 1240
 0934217
 9436383
 0370600
 108908
 14890
 1240
 119408
 878
 2634
 5268
 878
 136
 878
 1224

1240
 1224

No. Rms. Class. OCCUPATION, &c. Wife. Children. Others in Family. POSITION.

$$\begin{array}{r} 15035 \\ 0118242 \\ 8725460 \\ 9289077 \\ 4122810 \\ 7099024 \\ 5838 \end{array}$$

$$\begin{array}{r} 131726 \\ 132051 \\ 1028 \\ 7457 \\ 25839 \\ 25839 \\ 51275 \\ 2634 \end{array}$$

$$\begin{array}{r} 167 \\ 159 \\ 166 \\ 102 \end{array}$$

$$\begin{array}{r} 131726 \\ 132051 \\ 1028 \\ 7457 \\ 25839 \\ 25839 \\ 51275 \\ 2634 \end{array}$$

No. Rms. Class. OCCUPATION, &c. Wife. Children. Others in Family. POSITION.

$$\begin{array}{r} 2549683 \\ 3113300 \\ 57948 \\ 5268 \\ 66 \\ 578 \\ 29852 \\ 2634 \\ 3512 \\ 878 \\ 48290 \\ 4390 \\ 55 \\ 878 \\ 14048 \\ 5268 \\ 878 \\ 14048 \end{array}$$

$$\begin{array}{r} 21072 \\ 1756 \\ 8512 \\ 24 \\ 878 \\ 48290 \\ 4390 \\ 55 \\ 878 \\ 14048 \\ 5268 \\ 878 \\ 14048 \end{array}$$

$$\begin{array}{r} 20730 \\ 2634 \\ 4390 \\ 35 \\ 878 \\ 23706 \\ 1756 \\ 6146 \\ 27 \\ 878 \end{array}$$

$$\begin{array}{r} 179874 \\ 2549683 \\ 3113300 \\ 57948 \\ 5268 \\ 66 \\ 578 \\ 29852 \\ 2634 \\ 3512 \\ 878 \\ 14048 \\ 5268 \\ 878 \\ 14048 \end{array}$$

No.	Rms.	Class.	OCCUPATION, &c.	Wife.	Children.		Others in Family.	POSITION.
					3-13	-3		
								2,335
								150
								6.2
								4.2
								5.5
								5.07
								11.55
								7.307
								34

1317/4

3688

48366

44529

101443

180503

3119252

No.	Rms.	Class.	OCCUPATION, &c.	Wife.	Children		Others in Family.	POSITION.
					3-13	-3		
								9.08
								730.7
								9.08
								152.595
								1710

9.08

663.47

8218249

8637291

9580858

131877012

13071510

1161912

145239

132057

13188

145239

7646

152885

No. Rms. Class. OCCUPATION, &c. Wife. Children. 3-13 -3 Others in Family. POSITION.

No. Rms. Class. OCCUPATION, &c. Wife. Children 3-13 -3 Others in Family. POSITION.

$$\begin{array}{r} 325 \\ 908 \\ \hline 2600 \\ 29250 \\ \hline 295100 \\ 7307 \\ 908 \\ \hline 58456 \end{array}$$

90

$$\begin{array}{r} 878 \\ 2634 \\ 3512 \\ \hline 37734 \\ 2634 \\ 1266 \\ \hline 20194 \end{array}$$

$$\begin{array}{r} 878 \\ 7024 \\ 3512 \\ \hline 42144 \\ 4390 \\ \hline 50046 \\ 878 \\ 924 \end{array}$$

$$\begin{array}{r} 163 \\ 2121876 \\ 9436383 \\ \hline 1558259 \\ 9436383 \\ 9690442 \\ \hline 9436383 \\ 7634280 \\ 20706683 \\ \hline 9436383 \\ 8195439 \\ 7631822 \\ 9436383 \\ 9395193 \\ \hline 9436383 \\ 7641576 \end{array}$$

$$\begin{array}{r} 1467 \\ 14316 \\ 93120 \\ 50914 \\ 57267 \\ 76411 \end{array}$$

No.	Rms.	Class.	OCCUPATION, &c.	Wife.	Children.		Others in Family.	POSITION.
					3-13	-3		

5268
4390

1843/8
1756
878

165

105.36

122.92
878
3512
14
888

149.26
878
6146
17
878

8.8

73074

8637616

9486383

832

9201233

5035449

363
5599066
9436383

7360300

62
7923917
9436383

6663961

46
6627578
9436383

3798009

273
4361626
9436383

31882

54452

40461

23977

878

290

35

No.	Rms.	Class.	OCCUPATION, &c	Wife.	Children		Others in Family.	POSITION.
					3-13	-3		

14931

*1740872

2304489
9436383

153

49

223

17

296

32497

5118400

5682017
9436383

37

No.	Rms.	Class.	OCCUPATION, &C.	Wife.	Children.		Others in Family.	POSITION.
					3-13	-3		

Log 9436383

136300
135315

985

43700
30070

124650

105245
117710

120280

13035 / 132051 (87829)

117710

120280

No.	Rms.	Class.	OCCUPATION, &C.	Wife.	Children		Others in Family.	POSITION.
					3-13	-3		

87829

9436383

1771034

1207417

1207384

1771034

97
88
88
82
5
1

132051

15035

132051

145239
13188

154595
7646

152885

1320512988

13071510

1307151

296478

9092

145239

131877012

13071510

1161912

908

145239

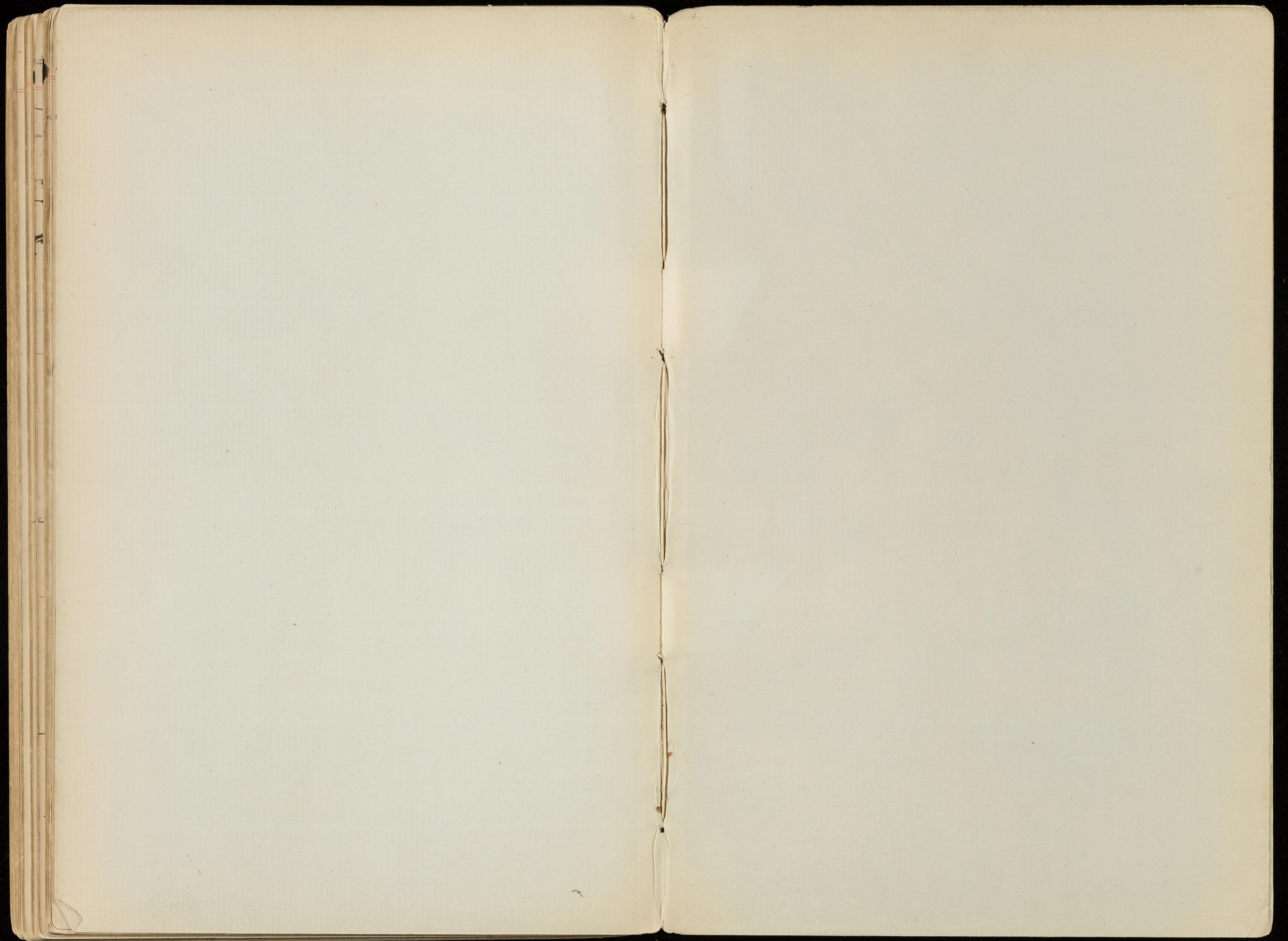
9-08

15035

No.	Rms.	Class.	OCCUPATION, &c.	Wife.	Children.		Others in Family.	POSITION.
					3-13	-3		

No.	Rms.	Class.	OCCUPATION, &c	Wife.	Children		Others in Family.	POSITION.
					3-13	-3		

Dalton
very Napoleonic
little idea of wages
not much knowledge of the life of the people
very different
we are
the
some of a week



Cornua Place 12
 — Terrace 11
 Crickton Street 38
 Bickens Street 17
 Elizabeth Terrace 11
 — Trade Street 15
 Gensolva Rd 34
 Ainford St 6
 Morley St 26
 Parkside Rd 32
 Robinson St 21
 Ruskin St 18
 Seymour St 10
 Silverthorn Rd 13
 St Andrew St 24
 Sleasdale Rd 1
 Trollope St 19

2 ft road in
 18 ft road E
 (X)

$3\frac{1}{2}$
 $2\frac{1}{2}$
 $6\frac{1}{2}$ 07 July

W part of S
 E part of B.L.
 (Marskall)
 (Hending)

Dalton
~~MS~~

B58

