

13 E B (350)
Police
+ Publican
Districts 7-8. 9. 10. 11

If found, please
return to
Charles Booth
9 Adelphi Terrace
Strand



If found

Please return to

Charles Booth.

9 Adelphi Terrace.

Strand.

W.C.

COLL VI

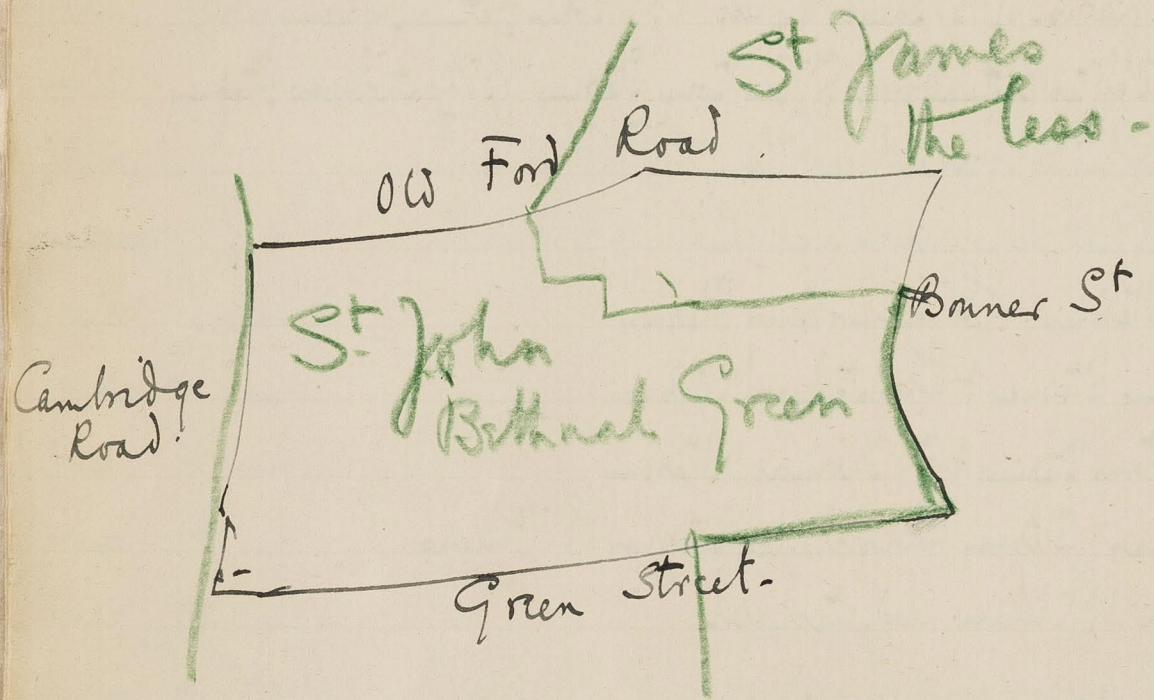
B350

[i]



Name.	Station P.W. Division	Page	District	Remarks.
Pearce. Inspector		3	10.	Being a part of the parish of St. James the less & St. John Bethnal Green.
— " —		21	10.	Part of St. Simon & Zebedee Bethnal Green, St. Anthony Stepney & St. Bartholomew Stepney
Weston. W.	Sup. of 9 or Bethnal Green Division at the Police Station & Green P ^o	37	9.	Interview with
Whitney. Sup.	Head of 4 or Whitechapel Division at the Police Station & Man St.	43	9	— " —
Drew. Inspector		53	10	Part of St. Benet Stepney, St. Dunstons Stepney
Drew. H. —		69	7+10	— St. Dunstons Stepney & Christchurch Stepney
Drew. H. —		83	7+8	— St. Dunstons Stepney & St. Thomas Stepney
Drew. H. —		93	7+10	— St. Thomas Stepney, Christchurch Stepney & St. Philips
Drew. H. —		107	7	— St. Philip & St. Mary Whitechapel
Lawley. Rev. H. A.	Rector of St. Johns Hackney. for 10 yrs vicar of St. Andrews Bethnal Green	115	9+13	Interview with
Drew. H. Inspector		145	11+8	Part of St. Dunstons Stepney, St. Matthew, St. John.
Drew. H. —		159	8	— St. James Stepney, St. Paul Shadwell, St. Thomas Stepney.
Drew. H. —		183	8	— Christchurch St. Georges in the East, St. Mary.
Drew. H. —		193	8	— Christchurch St. Georges East, St. Georges in the East, & St. Pauls St. Georges in the East
Drew. H. —		213	8	— St. Johns Wapping, St. Peter & St. Pauls Wapping, St. Paul Shadwell.
Drew. H. Inspector	Arbours Square Sub. division.	229	—	Interview with about the checking of licenses licensed houses in the respective
Worby. —	Shadwell Sub. division	—	—	sub-divisions
Frend. W. F.	Owner of the Great Arms in the Burdett P ^o	235	10	Interview with
		247	10	Part of S. Barnabas, Trinity & S. Luke.

District Covered.



Victoria Park Square.

Globe Road - E. side lb

January 3. 1898. Monday.

Police
 10
 1
 CP
 G.H.D.

Walk with Inspector Peam round district bounded on the North by the Old Ford Road, on the East by Bonner Street on the South by Green Street & on the West by the Cambridge Road: being part of the parish of St. James the less & St. John Bethnal Green

Starting at the S.W. corner. walk up Victoria Park Square. formerly dwelling houses of a good class; now nearly all factories, boots, shoes, clothing. St. Margarets house connected with Oxford House is in this road, also Oxford Hall a working mans club - 3 storied houses - a few still used as dwelling places - No. 30 to let. 6 rooms £35 rent "You may add another quarter to this is £9 for rate & taxes" said Peam. East along Green Street & south down the Globe Road - people as map on the west side - 3½ storied - houses used as dwellings or factories; on the east side 2 storied poorer, weavers' windows upstairs, many broken & patched look light blue. On the west side are the Bethnal Green Barracks. now closed. moved to Woolwich. owing to opinion

Bethnal Green resorts

Sugar Loaf Walk - purple

Improvements in bad streets

Burnham Square lb

Chester Place - lb

Thurloe Street - lb

Museum Buildings

59
opinion of authorities that you could never make decent soldiers of men drawn from the neighbourhood in the locality itself. "The Bethnal Green militia used to consist of a greater set of scoundrels than you wd. easily find anywhere else." Sugar loaf walk. running from Globe Rd to Vict. PK. square. consists of a passage with a few fair two storied houses, purple, one a builder, another a file cutter. South of it is another passage leading to Burnham square. dirty, ragged children, but all booted, light blue, on map dark blue, but Peam said it was not worse than poor so too Chester Street - also dark blue on map. & Chester Place - 3 or 25 stairs & Thurloe St - all poor working class - but well above Moo St & ^{Little Place} Ames Street in character. "You will find a sprinkling of thieves as you will in even the most respectable streets about here, but that is not the regular employment of the inhabitants." when they are Museum Buildings at the S.W. end of Thurloe Street and Green Street are 4 storied & have a rough type in them, for the most part let in sets of 2 & 3 rooms. The class of people in them is no worse than in the surrounding streets. Many of the poor prefer

Family life in Buildings.

North St.

North Street - lb

prefer Buildings to a small house because a set of rooms in a large Bldg is more of a castle to them than a house where there are lodges, or another family above them. In Buildings he said there is less interference of the family life of one family by its next door neighbours than there wd be in a small house with one family on the ground floor & another above it.

Helsms Place, which is the turning out of Joun street between Chester St & Vick. Park Square, looks still dark blue - poorer, dirtier, than the rest, cesters buildings. East along Stabley St. at the west end of which is a court known as North passage - dark blue on map. The south side of it is now down, & a new stable built up alongside of the demolition, north side still very poor; paddles mud, cesters barrows, loose stones, nearly every pane of window broken; the few cottages on the north side do not look worse than they do. The best end of Stabley St. is called North St. 2. storied, light to dark blue, children well dressed but windows broken & blinds dirty. Some houses exceptions. Christmas trees ~~still~~ covered with crackers, squets, dolls & tinsel, & candles, still in many windows. There is a passage - a continuation of North

Museum Buildings - purple

Hartley, Gawber, Wharnccliffe & Stainsbury Sts - pur.

Rents in Cyprus St.

Park St. db

North Street, behind Hartley St., about 9 cottages. 2 staired - light blue as map. Cottages on the south side of the passage only. Houses at wardly in good repair.

Hartley St. & the streets running north out of it i.e. Briarley, Gawber, Wharnccliffe ^{Hunslet} & Stainsbury St. are all 2 staired light blue on map. Working class, sprinkling of thieves all have been done up - not lately. But still look in good repair, many shoe makers, many weavers & a great many weavers houses, metal on the streets not properly rolled in, has been kicked up & looks untidy. These streets are not quite so good as Roydon St. (purple) but are almost people. The mansion St. Sanitary aid Committee has been jogging the sanitary authorities & landlords in this quarter with good results said Pean. All houses two-storied & flush with the pavement. Cyprus St. purple as map. Rents from places of houses for sale. Nos. 86, 88, 96, 98, 100 Cyprus street bringing a total rental of £105. ground rent £4, 2 leases of 5 1/2 yrs. from 1850. Nos. 17 & 19 Cyprus St. bringing in £65. 2 leases, leased from 1851, ground rent £2 Landlord paying rates & taxes.

Out of Briarley St. is a passage leading through to Park St. & the gate

Bethnal Green police force.

East & West end duties.

Thieves.

1129
Globe Road, very poor, windows broken & dirty, door posts black
bread & mess in the street, old tins, orange peel, etc.
rap marks it light blue but it looks worse. Pean called it
'low' worse than the other streets.

General Remarks.

At the Bethnal Green station there are 177 policemen - of
whom 147 are constables. The proportion ^{of police} per head of population
is probably greater in the West end than the East, said
Pean: "here you have to look after people & there after
property". There are no silver spoons in Bethnal Green
to guard. Street rows, gambling, snatching, thieving
are the chief offences. If a tradesman's cart disappears
& with it all its parcels, tea, cheese etc. you may
pretty surely expect to find the cart standing unattended
in a back street in Bethnal Green with its contents
gone. The receivers of stolen goods are the small
shops in the neighborhood. You cannot convict them
"But if they were not how could they afford to
sell the tea & cheese they do as cheap as they
do sell it?"

There are a large number of juvenile thieves. No known
schools.

Convicts

Migration of weavers to Essex

schools ^{learn} because there are very few lodging-houses - "It is in the kitchens of the lodgings in White chapel that the thieves are taught." It is a trade you must learn when you are young or not at all. That is why you never find an old thief who has not been a young one too. This he said was true in 19 cases out of 20. Old 'legs' are unmistakeable if you have had any experience. "There is a look about a man who has been a convict which you don't see in other men," but it is difficult to say exactly in what it consists. Peam was several years in Portsmouth dockyard & watched the convicts daily go out to their lunch. He has seen solicitors, clerks, & navvies working side by side but he has not been able to tell the difference between them for they all looked alike. Besides their dress there is a look which they all get & which they never lose.

From the Roper street quarter he said there had been a migration of about 40 or 50 families - weavers, down to Essex - Alderman Evans used to have his factories here. He left London in fear of a union being started & built houses for these families who followed him willingly.

Note that in all the streets especially the poorer ones there are signs of sanitary activity - paving - bricks repointed etc. Street sweeping might perhaps be more

are through than it is, & there wd be work for a good many more dust carts than one sees going this morn.

Pear had been giving evidence about the Dixie St fire. Mother & 8 children burnt. Husband died same day in infirmary of consumption. All to be buried today. Pear said it wd be a curious sight. Funeral was by public subscription. The Vicar of St. Bartholomews having made an appeal.

Dixie St is a passage with 2 storied, 4 roomed houses on the south side of it only, dark blue on map in the middle of a very poor quarter. House completely gutted but neighbouring houses untouched.

Found funeral just starting. Band playing dead march preceded by a number of men & children. Road blocked with people. Day being observed as a general holiday. Nothing very unusual ^{in that} because Monday generally is in these parts!

4 hearse with coffins, 4 mourning carriages, handkerchiefs with large black borders conspicuous in the hands of each of the mourners, plumed horses, mutes on foot with crape bands round their hats, 2 handsome cabs one with 2 women another with 2 men "probably publicans from the neighbourhood whose gossip after it will bring in -"

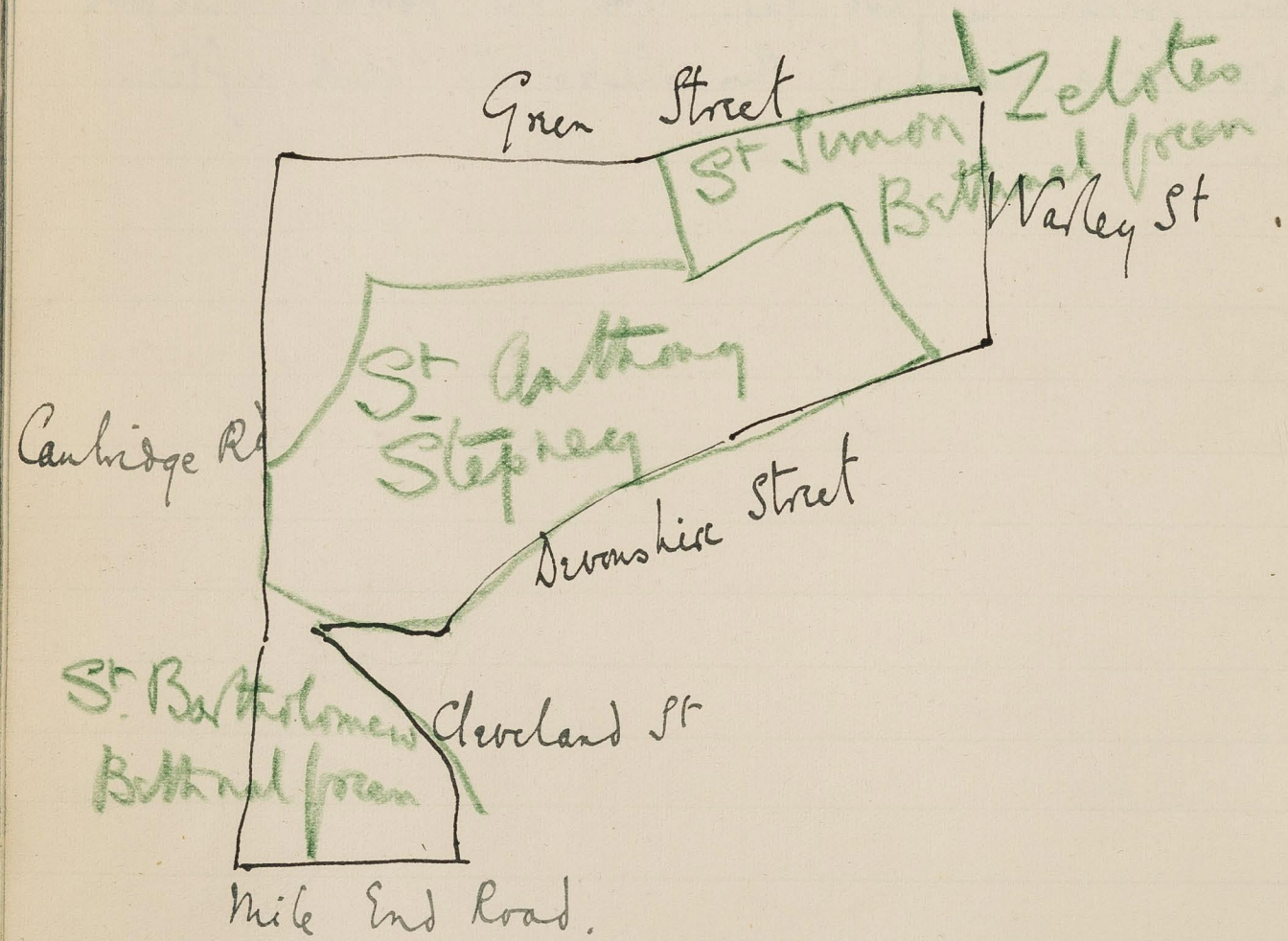
A funeral in Bethnal Green.

increased custom to their houses." 3 omnibuses, willing to take passengers to Pleiston (the burial place) & back for a shilling each, crammed, mostly women. Then a few carts but no easter carts. Respectful crowd. Hats lifted as hearse passed, greetings exchanged between the occupants of the mourning carriages & friends in the crowd, broad bordered handkerchiefs fluttered at the windows. 30 police men to keep order, but no attempt whatever at disorder. ^{proceed} at a foot pace down Smeaford Rd (light blue on map) & the south along Cambridge Road, trotting only when the mile end road was reached. Everybody out in their Sunday clothes & waited for the occasion, most women in bonnets, a few in shawls, men in caps, ties, black coats or brown, hardly a man or woman above 5ft 4 in among them, some bright patches of colour given by the hats of factory girls, ^{colours} otherwise sombre but not black.

"It's wonderful what a lot they think of a funeral down here there'll be many of them here wishing they'd been burnt to have such a turn out as this." A man may beat his wife, ill treat her so that she dies of it but if he gives her a good funeral he will be forgiven by the women of the neighbourhood who say, as Peam has heard

then say 'But he cant be so bad poor man, look what a handsome burial he gave her'. Even the poorest will pay £0 or £10 for a burial & then starve the week after.

District covered.



Green St. a shopping St.

Dist 10

Police 10 / 2 S.H.D.

Jan 4.

Walk with Subdivisional Inspector Pean round district borders on the North by Green Street, on the East by Wesley St. Devonshire St & Cleveland Rd: on the South by the Mile End Rd & on the W. by the Cambridge Rd, being part of the parishes of St James Zelotes, Bethnal Green, St Anthony Stepney, St Bartholomew's Stepney.

Starting at the West end of Green St. a market st. barrows & shops, rather poor class, small shopkeepers living over their shops, not better than ^{pink}purple - (pink on map) Salvation Army lodging H^o on north side. "takes in a very rough class". beds 6^d & 4^d per night or 8^d & 2^d per week. Prices - good bacon 5^d to 10^d per lb. fair mutton chops 4 1/2^d each, Cabbages 4^d & 2^d ea. Spoons 1^d per lb. Fowler hats (new) 2/6 & ladies crêpe mourning bonnets 2/11. - some beef 2 1/2^d per lb. large trade with women - home midday. South down Wesley St. 2 storied. purple as map. 2 or 3 families in each house. carmen, porters. a good many broken windows - some thieves. "they don't always choose the worse streets to live in, they think they

Urk Street - lb

they escape notice if they choose a fairly respectable street.
 west into Urk St. 2 storied. purple in map but ^{path} ~~path~~
 light blue. some ragged children. "working class of the ^{but} ~~area~~
 quite $\frac{9}{10}$ of them have been at the station for drunken
 .nias." Walter St. at the south of the Vict. P.R. Cemetery
 (now a playground & park) still dark blue, one or two h. at the
 west end rather better - one window with books on table - mostly
 novels - others with Xmas trees - houses in long bad repair.
 swings etc for boys in gravelled enclosure, in the part of the
 cemetery east of Walter's Road. "a great resource for the rough
 lads of the district."

Digby's Walk (S. of Digby's St) db

west into Morpeth St. better houses built 1844. 2 1/2 storied.
 purple as map. Knott's Ford. not so good 2. blue. Lucan
 St. less good still. light to dark blue. windows dirty & broken
 2 storied. Borwell St. a mixture. 2 1/2 storied. some dark blue
 some light blue & some purple. Butler St. 2. purple to bl.
 up Baker St. on the east side of wh. is Digby's Walk.
 not colored on map. 2 storied. very rough - windows broken -
 doors open - door posts black. great mess in the road -
 "chiefly vestry scavengers live here." ^{vestry} sh. be dark blue.
Digby St. with vestry depot - blue to purple. 2 storied.
 on the south side next the beer houses is a passage. Lansdell

Lansdell Place - db

Place

Rents in Portland Place.

Portman Place - purple

Atlas Road - purple

Atlas Rd. respectability

Sceptre St. lb all thro'

Ann St. lb

James St. lb

Essex St. lb

Place - 2 storied. dark blue. hatless ragged children, boots holey; very narrow street - rough. South along the globe Rd into Portman Place. 2 st. 2 families. purple. " 25. 31. 33. Portland Place & 99 Cephos St. producing £115. 14. 0, landlord paying rates & taxes " to be sold. Atlas Rd running out of it. on map light blue but was decidedly better. 6 ho. on S.E. end pink & the rest pink to purple "a decidedly respectable colony" said Peam. By its position it might have been a shun, unapproachable, but instead of this the pink has prevailed. books, flowers in china pots etc in front windows, windows unbroken curtains without holes. North St. is the same name given to W. end of Portman Pl.

Went across globe Rd & into Sceptre St. dark blue at East end, light blue the rest. (purple on map). "rough & very poor" said Peam: at the East end, south side dirty children one without shoes or stockings (the first I have seen in Bethnal Green) 2 storied houses. Ann St. also poor light blue

North up James St. some poor shops S. end. a purple to light blue street - no pink in it was. on the East side of the road nearly opposite the turning into Essex Rd. is St. Anthony's Church. not marked on any map though Peam said it had been built at least 12 yrs.

Essex St. 2 storied 'rough working-class'. just to the north of Atlas Rd. (purple on map).

Cornwall Square - black.

Cornwall Road - purple.

Cornwall Square - db

West Street - purple

West St, on the west side of James St is a large bare space seen on map, tenanted by an old-iron dealer. "He was the only man in the district who said he w^d employ ticket-of-leave men when police were making enquiries for the purpose. He never asks for a character for any of his men; has the very roughest working for them. Large yard piled with cartloads of iron rubbish, rails, tin canisters, stampings etc. "It is all pounded down into a compact mess & sold to shipowners as ballast." said Peem.

Went along Cornwall Rd. not better than purple: at the S.W end (not coloured on map) is Cornwall Square. should be black. "Make it as bad as you like" said Peem, for it is vicious & as bad as any place in Bethnal Green. a great source of trouble to the police. haddock curses its inhabitants. many juvenile thieves. Though so bad it is a small place. belongs to the Commissioner of police who made us smile one day by sending Tom to say that his tenants complained of constant row & absence of any police from the neighbourhood.

Along West St ¹⁸²⁴ pink on map but does not look better than purple. is not so good as Portman place or Allan St. 2 storied houses. flush with the street.

Hardy's Place

rents.

Hardy's Place - lb

(has since been captured. 20.1.98)

Devonshire Street - pk

Hardy's Place.. 8. 2 storied houses on the East side of West
St. not shown on map. 6 people to light blue. children
rather ragged & dirty. "Nos 5. 6. 7. 8 Hardy's Place
each with 4 rooms & a washhouse, rents amounting
to £100 - landlord paying rates & taxes - lease 4 1/2 yrs -
ground rent £10" to be sold.

West along Railway place. light blue on map, out of it
on the North side is Entick St purple to blue. 2 storied
houses flush with pavement, the convict living convict who
has just successfully escaped from Dartmoor come from
this street. 2 families in each house. 2 storied. built 1851.
houses better on the East than on the west side.

South along Cambridge Rd. turning down a passage on
the East side into King St. 2 storied. as map. like it is
Docton St into Devonshire St. this street is decidedly
better than West St & shd be pink, except just
at the west end and on the north side between the 2
blocks of almshouses. careful garden in front - china
pots in windows. etc.

South along Cheolard St 2 1/2 & 2 storied. built 1846.
pink to purple. on the west side just north of Whitehead
street is a court of 8 cottages - very narrow. flagged - alle
Co.

Coburg Place - lb

Cleveland Grove purple

Disappearance of a black spot.

Faith St.

rough dwellings.

31
Coburg Place^{ly}, Whitehead St. light blue as map. Hackameres
yard for postal vans by contract. "a poor set of horses
& men" at the NW end of the road. on the south side are
2 courts Union Buildings on the E. & Union Place on the W.
both poor, lb blue as map.

On the east side of Cleveland Rd. is Bellevue Pl. very steep -
cutted under iron gate. Dwellings of some of Channington's
men. 2 staired. On the west side of Cleveland Rd. lower down is
a cul de sac. light blue on map but looks purple. called Cleve-
land grove.

Into the hill end Rd. & west woods turning up into Bonswick
Place. black on map. this has now disappeared, the whole
place having been turned into dead grass & Varnish
works, shut off by a stout door at the S. end just past
the public house.

North up Cambridge Rd. houses dated 1774 at S.W. end, & still older
a little higher up. on the East side of the road are two very
bad streets. Key St. & Faith St. dark blue on map & still at
least dark blue. 2 staired. 2 roomed cottages letting at 5/- per
week. at the S.W. end of Key St. is a 4 st. model dwellings
"very rough." windows nearly all broken. a rough set of boys
playing at the bottom of the stairs.

General

22
Worsement.

Payments to police.

33
General Remarks. There seems to have been a general decline in the character of the streets lying between Devonshire St on the South, Clove Rd on the East & Green St on the North & Cambridge Road on the West. This has been partially compensated for by changes for the better in Devonshire St & Ballard St. Great number of beer houses in the district. Great temptation to do Sunday trade & difficulty of catching them owing to their having crows posted to give the alarm.

As to extra payments being received by police Pearson at first said he knew nothing of them except those reported & authorised by the Commissioners. These payments for authorised duties amount he thinks to about 4 pence week each man in the course of the year. Every fortnight a man has a holiday & is generally allowed to spend it on extra duty at music stalls etc: for this he is paid 5p. The music stall pays 20p & the remainder is pooled & divided among all the men at the end of the year equally.

Call money he said was no more. Police are occasionally drafted off to other districts & are not therefore certain callers.. so a race of professionals he takes their place & each morning at 4 am. you can see them going

Convicts.

35
going their rounds tapping at the windows with a long fishing-rod. As to call-money being paid by publicans, he is not officially aware of the fact & if he were he wd drop on the men & on the publican at once. "It may exist" he said, "it may have taken the place of the beer which publicans used to give to the men just before closing time". Now publicans don't risk their licenses. Pearn said that even were he to try to stop the practise of giving equivalents to a pot of beer per night he thought he shd fail. He admitted it was not a serious abuse but if he were aware of any instances he shd at once put his foot down both on the policeman & the publican. He said he thought that beerhouses in any case cd hardly afford to pay every publican policeman that passed their door in the course of a week.

As to the complaints of convicts he protested vehemently that they were unfounded. He knows one working as a pot man to a very respectable beerhouse keeper who has never even once suspected that his mate reported himself every month at the police station.

W. Weston. Superintendent J. Division.

Fixed points v. short patrols

District 9

Jan 4. 98.

CP (2) S.H.D.

Interview with W. Weston. Superintendent of the J. or Bethnal Green Division. at the Police Station in the Bethnal Green Road. E. End.

Mr. Weston is a big burly man who has risen from the ranks. Did not wish to be interviewed because he said his Inspector Peam knew so much more about the district than he did.

As to the policy of fixed points. He said there were 70 in Bethnal Green but that in a rough poor district fixed points were giving way to short patrols. It is tiresome for a man to stand in one place or never to move more than 10 yards away from a given spot. The duty is disliked. It is more difficult to prevent men from talking long & continuing to do so. Police are more open to temptation from bribes. Therefore he personally favours the short patrol, but he said it was a question of general policy.

Buildings

3951
which he felt should more properly be answered from headquarters.

As to Buildings, he thinks that the Builders or owners of large blocks who put in really strong caretakers & back them up do more to humanise a rough neighbourhood than "all the Churches, Chapels & Missions put together". "What that class want is discipline & a sense of orderliness introduced into their lives". All Buildings have rules & if the caretaker enforces them properly moral improvement must follow. "Once you get these people driven to cleanliness for their own sakes & not for the sake of cleanliness as an abstract virtue you have won half the battle". They are driven to be clean for their own sakes for they know that if they do not act up to a certain standard they will be turned out & have to find a small house elsewhere, "a thing which is now very difficult". But on the other hand where the rules of Buildings are lax "there are no worse places to be found": he mentioned as an instance of the latter Quin's Buildings in Russia Lane.

Rogers

Changes in Bethnal Green.

Proportion of police to population

41 91

Roughness he said was decreasing - not rapidly but he thought surely even in Bethnal Green: "I am certain that it is if you take London as a whole."

As to changes in Bethnal Green - "The bad places are not quite so bad, & the good not quite so ^{better} good." It is harder for a bad place to become good than for good place to become worse because vice is more conservative than virtue.

He confirmed Supt. Peams statement that the proportion of police to population was greater in the West than in the East End. But he also said he could well manage with a few more than he had.

Superintendent Mulvaney.

The Whitechapel Division

Jan 7. 98.

8

CP 2 G.H.D.

Interview with Superintendent Mulvaney head of the
H or Whitechapel Division of Police. Headquarters
Leman street. E.

Supt. Mulvaney is a man rather over 50, blackish
head, medium height, inclined to droop in his tho-
not so much as Supt. Weston; spits frequently.
Very friendly & anxious to do anything in his power
to help. Had never before seen the map showing
the streets coloured according to character & was
very much struck by it.

He said that his district was a hybrid one & therefore
very peculiar. A large number cannot speak Eng-
-lish. In the whole law abiding. Not rough to
-wards the police. They knife one another but
not those in authority. Stabbing cases fairly
frequent in the foreign streets.
Polsk Jews & Russians who come over are mostly
strong socialists. Their first inclination on coming
over

Raw Spirit

Women drink

over here in finding their liberty is to break out but they don't do it long. They are great spirit drinkers.

Those who come from Russia can stand more raw spirit than an Englishman. The other day 3 men went into a house & ordered 2 pints of neat whisky in a can. The publican gave it to them were drinking that they wd. be likely to try to drink it at a draught. He did for a wager; he fell down insensible, was taken home, left to recover, but found dead the next morning.

He deplored the cheap spirit sold by some of the 'cutting' houses. Said that even a small quantity had an extraordinary effect on women. He had seen them brought in after drinking a small glass; when they got outside the public house they had dropped down unconscious & so been taken off by the policeman. He wd. like to see a law that spirits might not be sold under a certain maturity.

Women he said drink more than they used to do. He thought there were more cases of drunkenness among women than among men even though many of

New licenses for old.

47 61
The men in the district were sailors.

But London is ceasing to be a port. In consequence, fewer sailors, less drunkenness, less prostitution, & greater difficulty of publicans in making a living than formerly.

Jews & foreigners drink more than the English men but get less drunk upon it.

In this district publicans are not unwilling to give up 2 or 3 licenses in favour of a new license being granted in a more paying district. The result may be that more is drunk in the new house than in the 3 old ones put together but he still thinks it a good policy on the part of the justices to allow this practice because you are less likely to get bad practices in a house that pays by honest trade than in one that will not pay with honest trade.

Said that the publican was 'squeezed' by the broker & the brewer, more especially gentlemen's servants.

'It is a curious thing how old servants, coachmen & butlers, think it the proper thing to become a publican now they have saved 3 or 400. Often he has wished to warn them but knows he wd be prosecuted for

Sleeping out-of-doors

Cure for loafing

for what if he did so.

Sleeping out of doors is one of the features of Whitechapel. It is a centre for common lodging houses & shelters. Destitutes from all sides drain here. Many wd rather sleep out of doors than indoors. They are covered with vermin. If they are without visible means of subsistence the police can move them on from door to door charge them, if they have a few pence & they generally have they can only move them on from door to door. Finally they wont move any further. Police dislike touching the class who do this because they are covered with vermin & wont come to the station without considerable handling. Result, they are left sleeping on the doosteps. The real sleep of this class is in the day on the seats round Spitalfield church in the afternoon.

Loafers he wd have if possible cared for by the state "in some large Broad moor." As they are, they do no good to themselves & harm to others. There was no hope he said of their ever becoming any better the only chance lay in preventing their making other people worse.

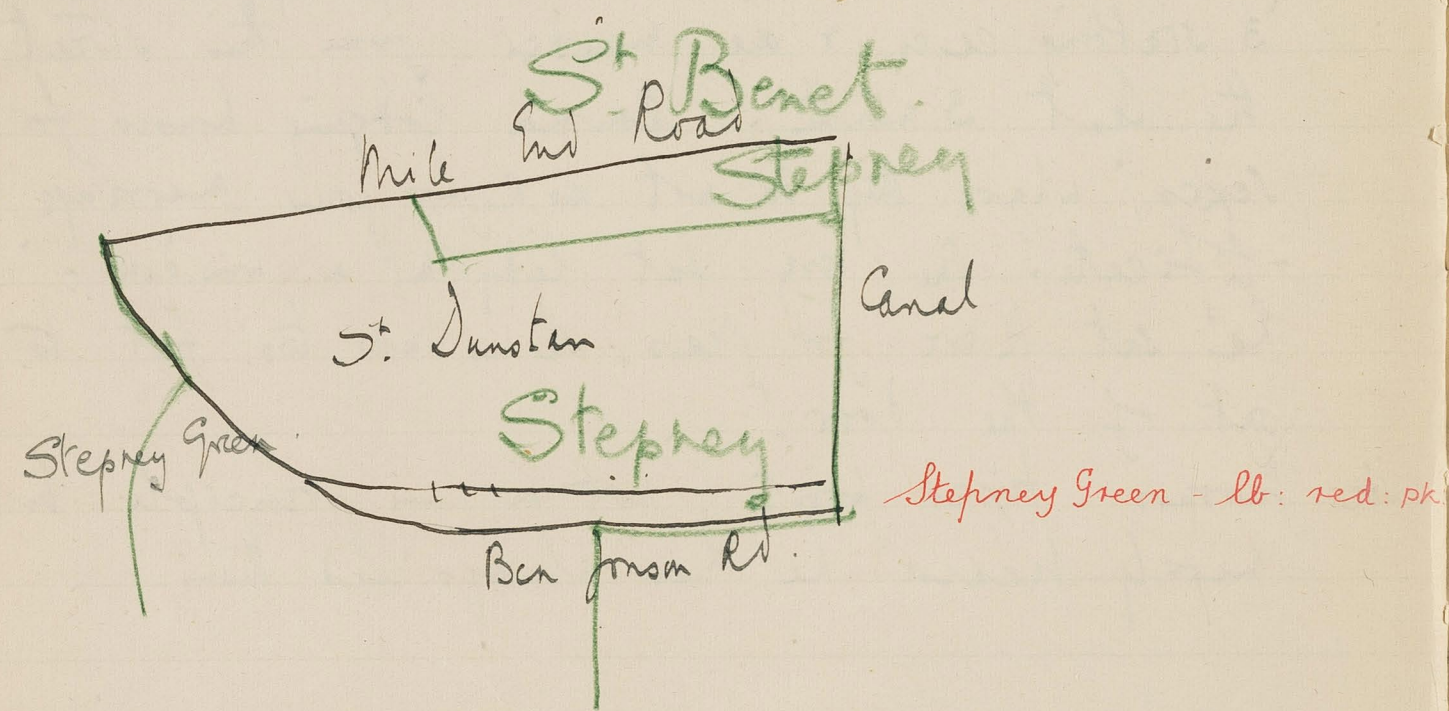
Then he took me through Westworth St to see the Jews

Murder in Dorset St.

57 61
Jews marketing for their Sabbath. Very little crowd.
Then into Dorset St. (black as the nap) still black
'3 stabbing cases & one murder from this street in
the last 3 months'. Common lodging houses for both
sexes; where they do not ask for your marriage cer-
-tificate. One very fat lady at a window. She
has sat there for years. She is now too fat to get
out of the door.

He favours fixed points, not on any principle but
merely because he has always had them.

District Covered.



Rents in Buildings in Stepney Green.

Jan 12.

Dist 10

Police
10
3

G.H.D.

Walk with Inspector Drew round district bounded on the north by the Mile End Road, on the east by the Canal on the south by Ben Jonson's Rd & on the west by Stepney Green, being part of the parishes of St. Benet Stepney & St. Dunstan's Stepney.

Starting at the S.W. corner of Stepney Green, house old, dated 1839. 2 $\frac{1}{2}$ + 3 $\frac{1}{2}$ stories, some servants kept, a few old wooden h^o half way up east side: also 6 stories ^{+ attics} modd dwellings almost entirely tenanted by poor Jews, backs are worse than their fronts, 3 rooms for 7/6, Montague House, also on the E side 'let out & used for Jewish weddings', large mess with a house some workshops as well as stables also on E side, at the NE. end a poorer block of Buildings called Paragon mansions, 4 st & attic, with a synagogue called an orthodox synagogue at the one corner - windows broken, inhabitant very poor - Character of Stepney Green as a whole pink as map but many houses are better & Paragon mansions worse. Green well kept by LCC. Behind it is Reeloz Square 2 st. 6 roomed houses letting for £20. to £30 tenanted by small business m.

Courts E. of Stepney Green - lb

Influx of Jews into Beaumont Square.

Maria Terrace - pk

men, small gardens, pink to pink based (on map pink).

N.E. end of Stepney Green a turning without a name purple on map. 'very poor labourers, not vicious' said Down windows broken & litter of paper but children booted & clean.

Into the Mile End Road & Eastwards the first court on the south side clean, purple in character, women its inhabitants, 2 storied & one home restored. The second court has 2 houses only, purple.

South down Beaumont St 2 1/2 storied, pink as map, on the west side

Louisa St, 2st. 2 families to each houses - mixture of Jews & English, 'pretty quiet labouring class' said Down - pink to purple (on map pink). into Beaumont Square. 3 storied

pink based on North, W & E sides (map, pink) south side not so good, purple as map. 'Great influx of Jews here

who are gradually driving out the Gentiles.' mess of paper etc in streets "Does not mean much in Jewish quarters

because few children are always messy.' much homework done in the neighborhood - Square well kept by LCC.

Maria Terrace. on map purple, is better than Louisa St. shd be pink

East along Shandy St 2 storied some new houses, into Whitehorse Lane - mixture of shops & dwelling houses. Children coming out of school. all well-dressed, fairly clean, lathered & booted. Mafalga

Sy

Trafalgar Square - purple

Worsment in Floriston Road.

Floriston Road lb

Ely Place lb

Calverley Street - lb

Space on the east side of White Horse Lane is less good now than the pink of the map. There is an entrance at the S.E. corner into the poor rough quarter of Ocean St. Knott St. etc. Houses now tenanted by poor Jews & lab. not better than purple. Same class as at the bottom end of Beaumont Spers' said Draw - 3 storied.

North up White Horse Lane & east along the Mile End Road. On the south side, Floriston Rd. pink on map, now undoubtedly worse. East side light blue, west ^{rather better} purple. Bricks of houses worn light by constant rubbing, holes in the plaster, doors open, 2 storied, poor but not rough.

South into Ely Place - very narrow here - rather rough - not coloured on map. 'Maybe there are one or two respectable families living here' said Draw. Jews getting in, rough Dutch Jews. better the west than the east end.

Running north out of Ely Place at the back of Floriston Rd. is Eaton Place, 2 st. well paved - houses on east side only. wash hung across st. poor. blue to purple. Along Ely Terrace into Calverley St. rather better than Floriston st. pink in map but looks no better than purple - litter in street, doors open, 2 storied, windows dirty. The next St. eastwards is a cul-de-sac - formerly

Crown

Crown Place, now Jewel St. quiet, soap working class & one or
 2 clerks, 2 families to each house, 2 storied ho. trees in
 little railinged front ^{purple} pink as map. Into Mile End Rd
 an unnamed turning ^(west of Harford St) leads south to a Mission Room, with
 an open space, litter, old cans, bricks, remains of a
 demolished shed etc, on the west side of which is a double
 fronted cottage. Harford St. 2 storied. pink instead of purple
 at the N. End, see shops. The next turning eastward
 out of the Mile End Rd is Wade's Place. very poor, 2
 storied, light blue as map, windows broken & patched, street
 narrow, no pavement, just room for cart, leads to a cooperage
 & stables, & wood & tub dealers yard, very muddy.
 Then up to the Canal. A beer house on the south side, advertises
 "Bread, cheese, pickles, & glass of ale for 2 1/2". Across the
 canal & S.W. along Bridge St. soap mechanics, 2 storied
 ho, here in the S. purple rather than light blue. out
 of it on the north side is Single Gardens. cottages
 done up last year & out houses built on to their fronts
 rather a poorer class than Bridge St. mostly carmen, said
 'Drew'. light blue as map. Into the East end of Alg Jew
 my here here than the west end 2 storied, some new cottages
 at the north side - Along Ernest St. pink on map but
 now

Harford St N. end pk.

Bridge St purple

Ernest St { E of Harford St pur
 { bl. rest

Prices in a beer-house

A sergeant in the police station of whom I asked, which was the worst street in the subdivision, said he thought Ernest Street was, owing to the number of thieves & ticket of leave men living in it.

A rough quarter.

Skidmore St - lb

Monsey St purple
Emmett St purple
Louvain St purple
Bologne St purple
Bonn St lb
Bale St lb

now much worse, 2 storied ho, rough class. several ^{unfortunates} & criminals living in the street, shd. be dark blue, ^{to blacks} dirty children at play, litter in street, pieces of bread etc, children setting fire to papers, ^{little girl} one crying for no apparent reason till its mother found its petticoats smouldering. Some houses 3 storied. 'As bad as Donkey Row' said Drew.

Skidmore St 2 storied - rather better than Ernest St but not much. The middle part opp the public house is as bad as it can be. But other houses in the St quite ^{East end - purple} respectable - coppers & carmen. many bare armed & bare headed women in groups round open doors. At the East end of Skidmore St is Emmett St. Allens large chocolate & Cocoa manufactory at North end employing many of the girls of the district - purple as map - 2 storied.

Path along Stafford St past ^{purple map} Commodore, Monsey & Emmett Sts all 2 storied. working class - a map fair but not better than purple. Out of Cologne St. are Louvain, Bonn & Bale Streets. none pink now (as map). Louvain - purple Bonn purple to light blue & Bale - light blue - gas stoker living here. 2 storied ho. dirty ragged children but not dirty, holey stockings & shoes. some prostitutes, doors open. groups of women. South of Bale Street

are.

Rents.

Essian, Monteaule, Dongola S^{es} pk

Rough quarter east of Trafalgar Square.

Duckett S^e lb

Masters S^e lb

Ocean S^e lb

are some new 2 storied streets which have taken off the
best cream of the district & account for discrepancy between
map & present time. Dongola, Monteaule, Essian S^{es}
all purple to pink, 2 storied, broomed houses letting at 12/
13/- per week

Then went into Duckett S^t (formerly Edward S^t) into a rough neigh-
-bourhood - thieves, a few prostitutes, ticket of leave men;
in appearance & character like the Donkey Row district.
light to dark blue. Mary S^t 3 & 2 storied - passage under
house on south side called Lomas Bldg. leading to
Ben Jonson Rd. like it Masters S^t (late Chambers S^t)
with a passage leading out of its west end into Trafal-
-gar Square. Cadiz S^t 2 storied, Ocean S^t 2 & 3 storied
Knott S^t 2 storied with no outlet at its southern end.
all light to dark blue. cotes. thieves - good for nothing
unfortunates - hatless girls & women, doors open, bread
about, rough - the map only marks Knott S^t dark
blue but there is little difference said to be between
this and any of the rest though he was inclined to
say that Knott S^t was still the worst of the
lot. At the S.W. end of Ocean S^t are some more resp.
houses with gardens in front of them - New Jews in
there.

Drink

Jews

65
these streets whose worsenment must be due to the overflow consequent on natural increase of population in the neighbouring Doney Row district.

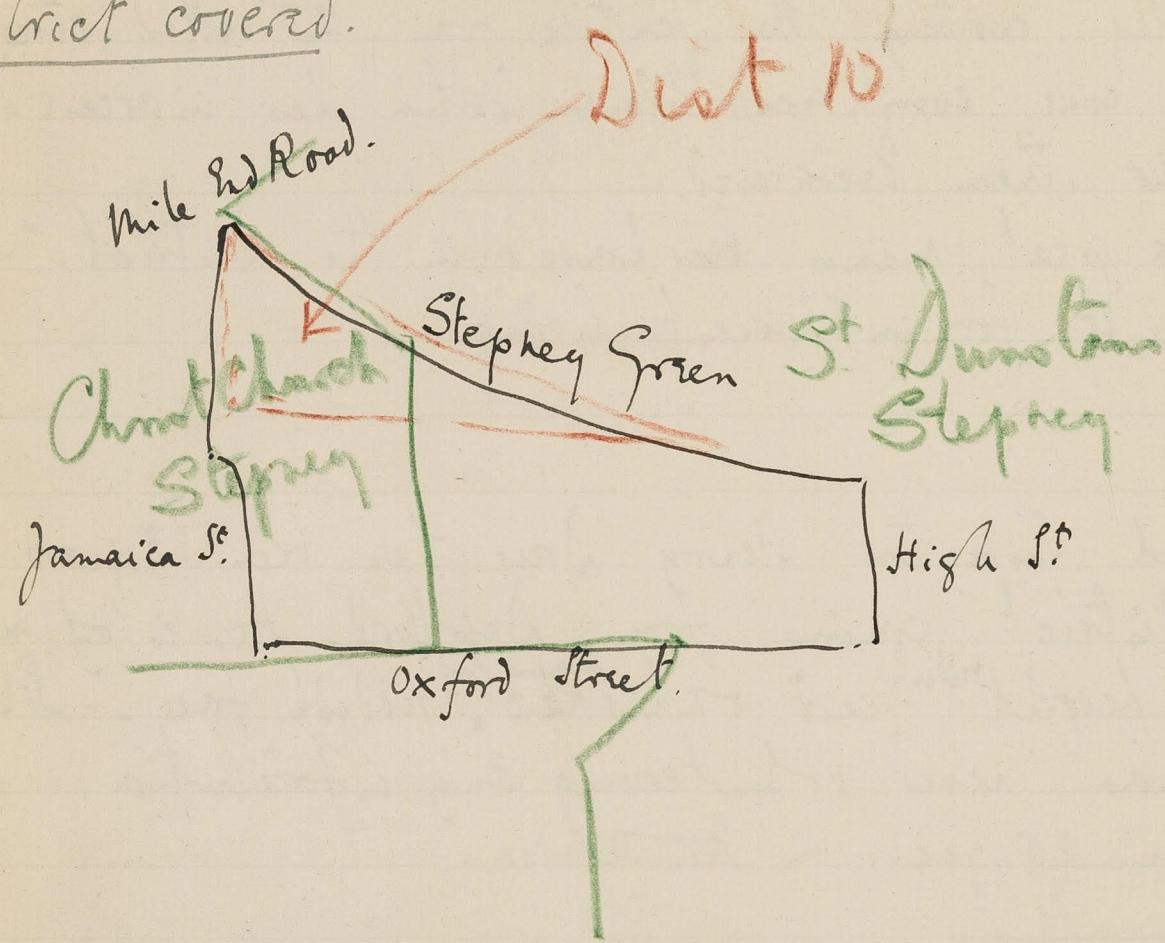
General Remark. As to drink, Drew pointed to a slight decrease among men & an increase among women. "Not due here to grocers or off licenses because we have so few of them. Leo slams now in entering public houses but he can't say why. Sweet giving has been stopped by order but it makes no difference to the number of children sent to fetch beer. He wishes they could be prevented, saying that children though they did not become drunk yet acquired a taste for both the beer & its smell by being sent to public houses to fetch it. As life becomes less interesting the child turns to drink for excitement. About half the population in his subdivision are Jews - who are regular rent payers & respecters of authority but dirty, messy & great cheats: they buy their private quarrels to the police station each charging the other with crimes. It is impossible to believe either. The Dutch Jew is the lowest scum of them. Their work is slop clothes, boots, cigars & fur. They are

are gradually rusting the pentile from the better streets.
More come every year. Immigration has increased
rather than decreased.

There are a great many beer houses in the district. "Hard
put to it for an honest living."

Subdivisional Inspector Henry Drew has been 3 years in
this district, coming from Deptford. He is of me-
dian height, ^{reddish} beard & ^{turning grey} whiskers, reddish face. Silent
& cautious, never volunteering any information.
Has been 25 years in the service.

District covered.



Inroad of Jews.

Jan 20.

Dist 7 + 10.

69
C(2) F.H.D.

Walk with Subdivisional Inspector H. Drew round district bounded on the north by Stepney Green, on the East by High Street, on the South by Oxford Street & on the West by Jamaica St & Hannibal Rd. being part of the parishes of St Dunstan Stepney & Church Church Stepney.

Starting at Wellesley St. a turning northwards out of Oxford Street - 2 $\frac{1}{2}$ storied. has been better than it is some broken windows but inhabited by a quiet & respectable working class. Jews beginning to come in - purple as map. West along Clive St. formerly George St. into Silver St. well paved, clean, poor, quiet, 2 $\frac{3}{4}$ storied to flush with the pavement. London City Mission Hall at North end - casement & costers. The 3 storied are only one room thick. purple to light blue (purple in map. like it are Gold St & Star St. purple as map, a little broader than Silver St. or Brilliant St. some local lying about in all these streets.

West into Jamaica St. 2 st. park as map, much broader street - Jews getting in; very fair gardens. out of the

Redman's Road.

Hannibal Road - purple

Cressy Buildings

Cressy Place - pink

The East side is a turning to a news used by Leeward
Bro Carmen - evidently cut off from the gardens at
the back of Silver St. which in consequence have
nothing but small yards behind.

West along Redman's Road, small shops, 2 storied, on the
south side is a ^{cul de sac} ~~passage~~ between Jamaica St & Silver St.
called Pearl Place, poor, quiet, 10 cottages, windows &
work clean, one said her house had 2 r & a kitchen
& she paid 5/- a week for it - light blue to purple.
(a map light blue)

West into Hannibal Rd. many poor Jews. coming in -
poorer than map, door posts dirty, windows broken,
purple rather than pink, some light blue, on the
west side is a court light blue as map, on 2
2 cottages there, 1 storied.

South along Stepney Green, houses at NE end dated 1845,
those on the SW side are older, red tiled; south along
Cressy place - Cressy Buildings, 4 storied, red brick,
belonging to the East End Dwellings Society, have
taken up the whole of the triangle made by Denish
Row, Hannibal Rd & Cressy place - A very mixed class
in the buildings - a curate - lady worker - County
Council

2 doctors from the London Hospital

Council architect (Mr. Fleming), as well as artists -
none there for doing work in the the Bldg but simply
for their own convenience. III lettings in the buildings,
2f for 1 room. 6f for 2 rooms. only 4 four-roomed bldgs
these used to be more but they have been divided as
the demand is for 2 roomed holdings. no restriction as
to the number allowed in a room though care takes has
to see that ^{are} not too many ~~are~~ allowed in - wash house
in a low building in the court; everything clean looking
the poorest live in the rooms facing Hannibal St; the
richest in those facing Daniel's Row of which only 2
cott remain on the East side, nothing on the West side.
only 2 or 3 families in the Bldg are Jews.

The next building SW out of Stepney Green has 6 2 storied
cottages, quiet, clean, purple.

South into a block of working class, 2 storied streets.
each house with 2 families. Oley St ^{is} the best of them
& pin R as map. Pole St Copley St Latimer St
are rather poorer, not better than purple, Copley
St being the best of these three.

The next street south out of Stepney Green is Gordon St.
there are two courts out of the West side the
~~best~~
northern

Copley Street - purple

Courts out of Garden St^e - lb

King John Street - nk

Rents in Bromley Street

George Place - lb

at the most with 6, 2 storied cottages, marked dark blue in map but Drew said, quiet, poor but no trouble to police, windows & blinds clean, doors shut, houses in fair condition, not worse than light blue. The head court with only 3 cott. do. do.

King John St. very resp. pink rather than purple of map. many police living there, 2 storied houses.

South down High Street, & into Oxford St. on the South side is Bromley St. older houses, 1827. 2 storied, 3 rooms up & 3 downstairs & 1 wash house letting for 15/- to 17/- per week, on quarterly & some on 3 yearly agreements, railings in front & fair gardens behind. Drew lives in one of them himself. Many small tradesmen, a few keep a servant.

Went along Oxford St. small shops, & public houses, used to be many brothels here: dispersed by the efforts of Charrington but have reestablished themselves in Shadwell.

North into George Place & George St. quiet rather poor well paved purple to light blue (purple in map). 2.

General Remarks. The above square subdivision of the White Chapel police is bounded on the north by the

Boundaries of Police Subdivision

Strength.

Values of licensed houses.

Betting

77
the South side of the Mile End Road; on the East by the West side of the Regents Canal; on the South by the North side of the Commercial Road & on the West side by the East side of the New Road.

The police staff of the subdivision is 111 of whom about 95 are constables [he was not sure that he ought to give this information & is going to ask the Superintendent - Supt J. who said he was not to give it.

The beer houses are small & medium sized in this subdivision; there is nothing very large. There is nothing worth more than £2000 & the lowest will fetch about £300. Nearly all in the hands of the brewer, before entry in to a house worth £300 the publican will have to have at least £100 of his own.

Public houses range from £300 to £35,000. Publican will have to be the possessor of at least £100 before entry.

Betting on the increase: has been driven from the streets but goes on nevertheless. Jews think newspapers are the principal cause of its increase. Does not see how it can be stopped. Jews gamble rather than bet. Has 3 clubs

Tendency of central London
to become poorer.

Brothels

Juvenile thieves.

dubs in the subdivision, gambling goes on in them (this he said with much hesitation). Card playing, music at home & at the Music Stall are the chief amusements of the Jews.

Spoke of a general tendency of ^{central} London to become poorer. The first people to be affected by cheaper locomotion are the richer classes. Life of the poor more sociable & more bound up with places & neighbours than life of the rich. Therefore rich go, poor remain. Therefore a general ^{top down} change of the better streets to become worse, but not of the worst streets to go lower or even to remain as bad because ^{is less vicious than formerly} vicious class.

Doubt as to the expediency of ridding out brothels unless you can undertake the care of the women who use them as their homes. Thinks there are just as many prostitutes now in the subdivision as there were before the Chancery Lane crusade; while the number of brothels in Shadwell has increased. Prostitutes are equally Jews and Gentiles.

A good many juvenile thieves - not so many perhaps as in Whitechapel but still a number - are all taught by the 'old hands'. Knows of no regular school for them. The kitchens of low lodging houses are about the

Police & publican.

Shopping streets

Buildings

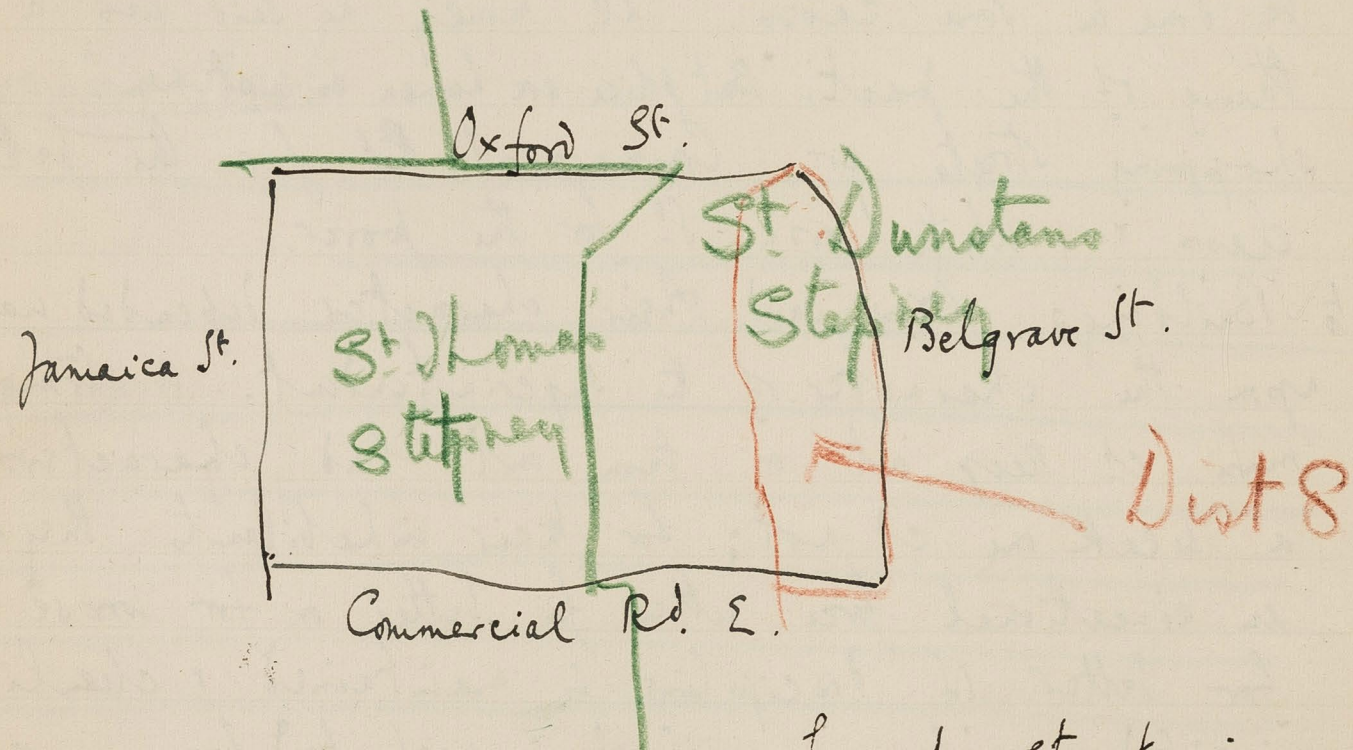
the most demoralising place a boy can enter.

As to the police accepting money from publicans or any one else: he wd hardly admit it but said it might be done in some cases. 'Call money' he said was a thing of the past. 'But police are human as most men.'

The shopping streets are Commercial St for the better class & White Horse St for the poorer.

As to Buildings. Drw said their character depended mainly upon the character of the superintendent. A strong man wd keep out or turn out bad characters a weak one wd not; for their inhabitants they are an educational force either for better or for worse, for better if discipline is maintained & cleanliness insisted on, & for worse if it is neglected because one bad family can more easily affect a large number in a Buildings than in a house.

District covered.



Rents in Serrab St.

*. Serrab street is an anagram for Barneo. the name of its builder. - 3r. up & 3r. down & one scullery comm to the two. 2 families in each. rent of $\frac{1}{2}$ house 7/- per week. Same up as down stairs.

Heath St.

Jan 21.

Dist 7 + 8

G. H. J.

Walk with Inspector Dow round district bounded on the north by Oxford St., on the East by Belgrave St. & on the south by Commercial Road E. & on the west by Jamaica St.: being part of the parishes of St. Dunstons Stepney & St. Thomas Stepney.

Starting at the Police station in Abou Square East: North into Charles St. small shops, 2 storied. pink as map. East & south down Fair St. 2st. 6 rooms & a scullery houses built 1854, working class, 2 families to each, purple to pink, like it Diggon St. built 1866. & Serrab St. formerly Alton Gardens new, built within last 6 years. rents 7/- for $\frac{1}{2}$ a house. 2 storied houses containing 6 rooms & a scullery; respectable working class & several policemen. Heath St. ^{east} west of it is older, 2 storied, narrow, 'not a den of thieves' but these are thieves living there; houses mixed in character, costers, fish curers, & respectable artisans, as a whole rough noisy, middle part the worst, dirty children & women, many home work

Old Church Road.

rough.

Belgrave St.

Sound is still purple
in appearance.

workers. character light to dark blue (on map purple)
like it is the next street Old Church Rd. 2 stories
& attic, houses, newer, large cowsheds at S. E end
mixed class here also but as a whole light blue
'rough'. Back entrance out of it into the public
house in Heath St. at the north end is Church
passage, paved with flags, called Charles St. on
map, poor ten courts on either side, fixed cavers,
2 st, light blue as map. the easterly ct. is called
Eltham place built 1849. Windows clean in all
these streets.

East & South down Governor St. purple as map, better
than either Heath St. or Old Church Rd. Walter St.
2 st, better, pink as map, venetian blinds, ^{flowers} pots
in china pots, better curtains, etc. like it
Portland & Albany Streets, pink as map.

South Belgrave St. poorer north end than south as
purple to pink, ^{S.W. end pink based on or 2 keep records} 2 & 2 stories, a cellar making
the half storey some times used as a living
room but more often as a cellar, seen under
grating forming part of the pavement. at
the back ^{occupying} ~~forming~~ the space between the
backs

Abous Square.

Jamaica St.

87 35
back gardens of Belgrave St. & Bromley St. is a rope walk (Good's) running the whole length of the street down to the Commercial road.

Into Commercial Road, westwards, north into Heath St. which has a turning into Senrab St. south and which has a turning into Fair St. neither shown on map. At the bottom of Senrab St. is the wall of the large garden to house in Commercial Rd. belonging to Dr. Cunningham (not correctly shown on map).

Into Abous Square. indifferently kept. belongs to Messrs' Company. was done up 2 years ago but has since been allowed to go to waste, none allowed to use it, is now being tidied up, houses round occupied by mixed class, few coming in, north side & southern & western sides better than the eastern, houses 3rd storied with fair gardens, not take in lodgers. park as map West side inclined to people

East into Jamaica St. 2 storied, a few small shops - 2 builders - fish - sweets - paper shops - Jews getting in at top, better north end than south - a purple park

Peth St.

General Remarks.

Demand for small houses.

pink in character, east along Bermuda St. & into Peth St. light blue as map. rough - poor - broad in street - but well paved with imitation granite cubes with bevel edges. no trees. North up Patterson St. purple pink, 'not poorer than Jamaica St.' on map purple, respectable working class. East along Oxford St. & south down Appleby St. (the end formerly called Anne St. houses done up not long ago - purple rather than (blue of map. not near so poor as Heath St. built 1854.

General Remarks. The above a district of small houses - houses & small public houses. majority of ^{dwelling} houses 2 storied, flush with pavement; roads fairly clean, the poorer ones lately paved with hard imitation granite cubes, easily washed down & apparently wearing well. Some of the houses e.g. S.W. end of Heath St. only one room thick though with a back scullery on ground floor.

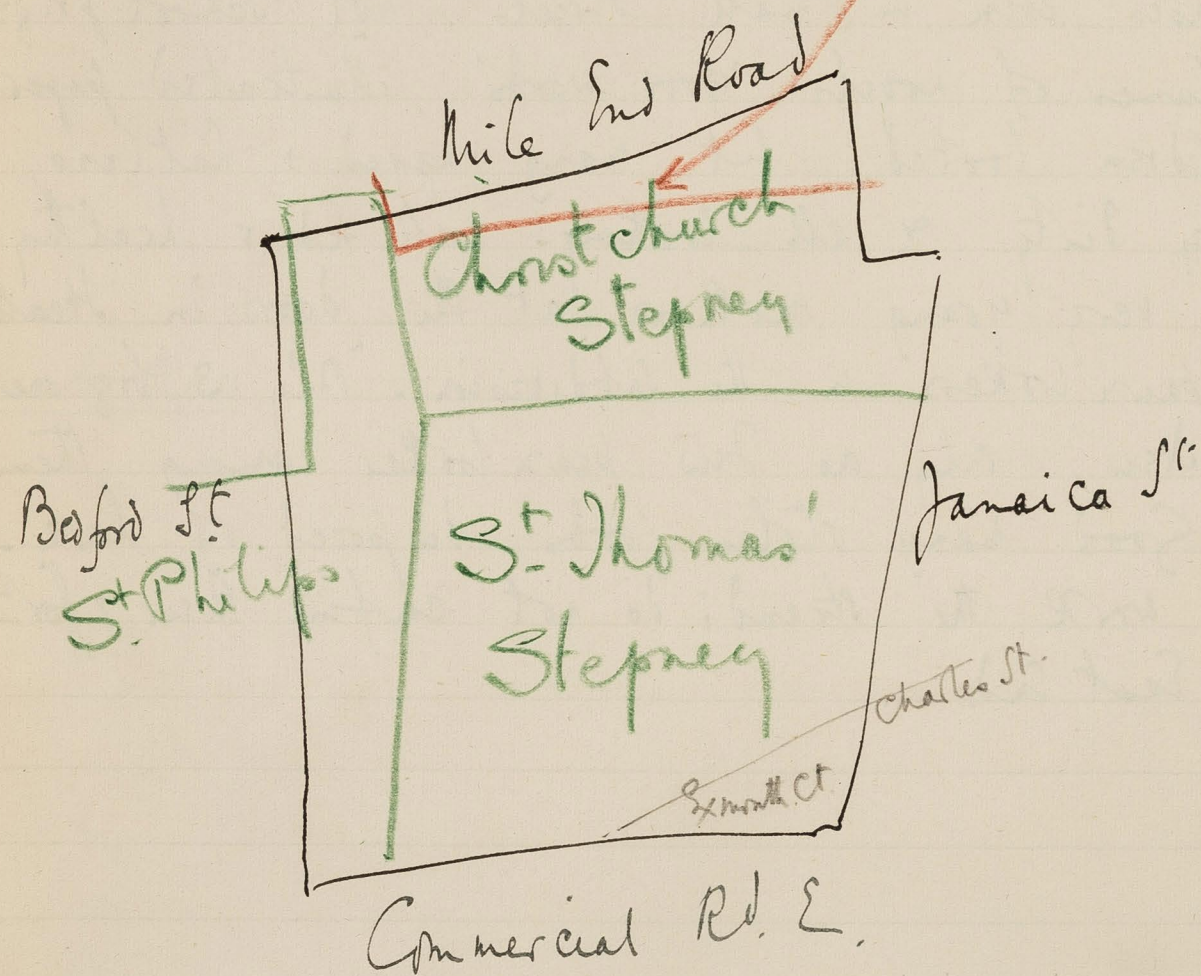
Drew spoke of the great difficulty of finding small houses & the demand for them. They are generally let before they are empty. In consequence very little migration from.

Pawnbrokers.

9135
from street to street. 'People dare not move'
Noticed many books on the tables ~~in~~ the windows of
even houses even in small streets - not school prizes,
old volumes of novels, 'good words', illustrated papers,
all children books, but many ragged & hatless,
not very dirty & all looking well fed & healthy;
a few very young mothers at the doors in Heath.
Not many pawnbrokers in the subdivision. Only 3 big ones
said drew, only a few pawnbrokers among them
all - Good many stolen goods disposed of here -
Thieves work the strand; do not confine their efforts
to the East End.

District covered.

Dist 10



Exmouth court.

Exmouth court - purple

Jan. 24. Monday.

Dists 7

(2) CP

10 (page 97)

F.H.D.

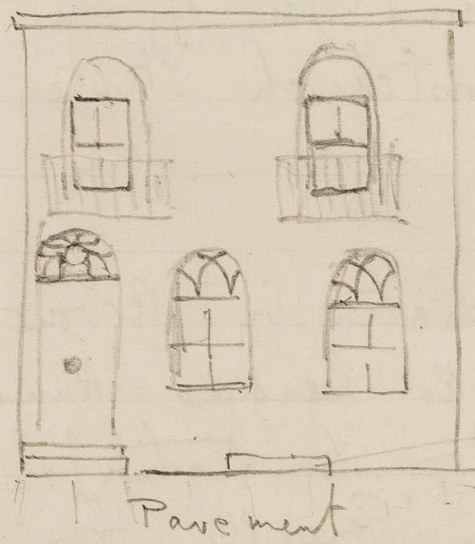
Walk with Inspector Drew round district bounded on the north by the Mile End Road, on the east by Jamaica street; on the south by Commercial Rd E & on the west by Bedford St. being part of the parishes of St. Thomas' Stepney, Christ Church Stepney & St. George's the Great Philip's.

Starting at the Police station in Arbon St. East. Crowd of loafers, out of work hanging round the Thomas Police Court (next door to station), a few young women all of casual class. Generally from 60 to 100 charge at the police court every Monday morning. Down from the whole of the police Ct. district - drunkenness, disorder - felony - larceny - all sorts of misdemeanors. No one is a particular feature of the court.

West along Charles St. & south down Exmouth St. - pink as map 2 storied. Out of it on the west side Exmouth Court. (dark blue on map) has all be pulled down & rebuilt. 4 cottages, artistic, red brick & stucco with diamond glass windows & occupied, others still being built. New

Rep

Rents & Houses in pink streets



cellar, some times used as a living room.

Type of 2 storied house in a pink street in Stepany. Inhabited by 2 families as a rule. Built 1820 - 1830.

respectable, well built, concrete passage between houses, narrow. There'll be no difficulty in finding tenants, the demand is for such as these. North up Dempsey St. & across Clark St. 2. st. both pink. ^(as map) Houses of the 1820-30 type. well built. flowers in china pots a round tables in front windows. clean curtains, windows, door steps, sanctum so books - built of a reddish yellow brick.

" Nos. 5, 7, 9, 11 & 17 Dempsey St., 23 Charles St., 69 & 73 Clark St. let for £209. tenants paying rates & taxes: Dempsey St. held for 76 $\frac{3}{4}$ yrs from June 1824 at £32 a year. 17 Dempsey St. 65 $\frac{1}{4}$ yrs. from 1835 at £4 a year. 23 Charles St. 76 $\frac{1}{2}$ yrs at £4. 69 Clark St. 72 yrs at £4 from 1828 at £4. to be sold.

property about here all belongs to the Mercers Co. On the S.W. side at back is a long line of stables, cow sheds etc. otherwise very fair gardens at backs of houses, some of which have been turned into work-shops like those in the north of London. quiet broad streets, fairly kept, like it Smith St. North up Jamaica St. & West along Red man's Rd. on the south side opposite Hannibal Rd is a cul de sac with houses on the East side only. not

A great Judaea.

Sewitt's Court - db b²
Leslie St^e purple

Dist 10

Bevil St^e purple
Greenwood St^e purple
Court - purple

not on W side as in map; slips of gardens with iron railings in front. light blue rather than the purple of the map - very poor but not rough. Redmans Rd. 3¹/₂ & 2¹/₂ staired, small shops, many Jews. on North side is Assembly Place leading to Mile End Rd. w/ a ⁽⁵⁾ few 2nd & 3rd floor houses, none at NW end. The other side is all news & workshops, tinsplate factory etc, called Winters buildings. built 1879.

West along Mile End Rd. S. down Jubilee St^e shops at N. end. on N. side is small court, now shut up, ^{lodging} no house remaining at end of passage - very poor, doubtful reputation! called Sewitts Court.

West along Mile End Rd. on S. side are Leslie St^e 2 st & cellar - poor, Jews, purple; used to be respectable English & pink as map. The streets west of Jubilee St^e are all being absorbed by the Jews, English are moving out to Plaistow. I now speak of the district as 'a great Judaea' like it Bevil St^e & Greenwood St^e. A court (unnamed) between Harlow & Greenwood St^e contains one up poor house & a wholesale boot manufactory. 'no trouble to police'. light blue - black on map. Harlow St^e 2 staired - poor, Jews - light blue to purple. Palishead Place also poor but well paved & clean. lb to purple. Then south down Bedford St^e the

rem

Raven Row.

Grove Place - lb

Lewis Buildings - lb

Dorset Buildings - lb

Adelina Grove.

Adelina Grove - lb

The Salvation Army have taken over
the Wesleyan Chapel in Jubilee St.

name now given to what were formerly South St & Raven St.
 East into Raven Row. On the north side ^{is a court with} ~~at~~ 2 storied
 cottages. respectable. well dressed child. no trouble to
 police. look purple but black on map. On the South
 side, two courts, one known as Lewis Buildings.
 black on map but now light blue; poor Jews, boot finish
 & clean nicely dressed children playing in front of one
 house. 'Not rough or in any way criminal'; next to it
 down another passage are Dorset Buildings only very
 poor - light blue - Jews. no trouble. Between Gathead
 Pl & Lidney St on the N. side of Adelina Grove are
 5, 2st. cott. without a name, purple in character.
 Along Adelina Grove. used to be Lady Lake's Grove.
 there is still a rough common lodging house on the
 South side but no longer inhabited largely by
 caterers who have barrows in Petticoat Lane. Where
 the black is shown on map there are now poor
 Jews. character light blue to purple. East across
Jubilee Street, north end shops, lower end 2st+
 cellars, houses, pink to purple (map, pink) west
 into Lindley St - a cab yard & poor Jews. lb. to purple
 on map purple. Hawkins St 2st. purple to pink. Jews
 getting

Richardson Street - purp

Newark St & of Philpot St. - pur.

Jewish in flux & neglected squares

Broomehead Road - lb

getting in. purple to pink (map purple) Richardson St.
down the centre of these 2 streets. purple, Jews, children
clean & tidy, no lb. row. Houses lately done up -
a black master stables under arch on East side.
Wobsey St. purple but S.E. end near Jubilee St. very
poor. lb. tag sorters.

Went along Newark St. (late New St) the black spot
between Newark & Oxford St. no longer there, now poor
Jews, lb. South down Bedford St. which is the boundary
between Whitechapel & M.E.O.T. poor Jews - ^{lb. S.E. end} purple to lb.
past Ford Square (late Bedford Square) a rough field
uncared for, shut & entirely neglected, all Jews
living round the square, 3 st. houses, 30 four families
in each house, character pink to purple. East
along Rutland St. 2 & 3 st to Sidney Square. equally uncared
for - better class of inhabitants on east side than
west, some servants kept on E side. South down
Jubilee St. small shops at S. end, or small beer house.
(Porter. 3^d per pot). Went into Commercial Rd &
north into Broomehead Rd. leading into a quiet
set of streets shut off from the rest of the world.
all pink in map but looking poorer now - streets
little

Deterioration.

Newbold St. - purple

Garden St. - purple

Nelson St. - purple

John's Place - lb

Baker Street - lb

Betterment in a black spot.

little used by east traffic but wanting mending badly. Bromehead St. is poor, quiet, messy, bread & paper, & outside leaves of cabbages lying about, lb. rather than pink, a few Jews. Newbold St. more bread, 2 St, purple Garden St. also purple as is the piece behind it, working class, poor, narrow backs, children clean, in Bromehead St. is better, policemen living here, purple to pink.

Out into Commercial Rd, north up Sidney St. west along Nelson St. lb. rather than pink of map, very poor Jews. on the north side of it is the black spot (in map) called John's Place. known to police as Jack's hole. better now than it used to be. well paved. more respectable than unrespectable families tho' still or 2 rough families all houses done up, parish shut up one or two houses wh. were unsanitary & brothels. some unfortunates still here. l to dark blue.

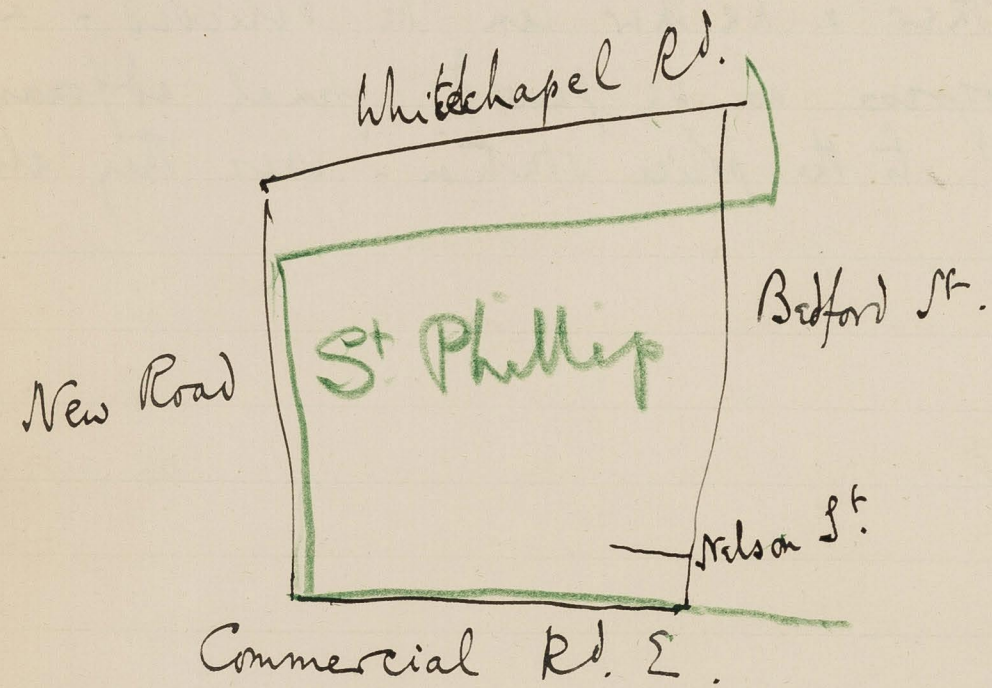
Baker St. a little further west, very poor, one or 2 shady houses. with prostitutes & thieves, lb. to dark blue on map purple.

into Belford St. of which the S.E. end is rough. Buildings. 4 storied - Finnish. all very poor, Costers

Russia

105
Russian & Polish Jews - very quarrelsome. No physical
trouble to police but a great deal of bother - each
accuses the other & neither can be believed - a
quarrel in progress as we passed - final adjournment
of the parties to the police station - where they all
spoke at once -

District Covered.



Cameron Place - purple

Jews in Varden St.

Varden Street - purple

Philpot Rd.

Jan 25. 98.

Dist 7

CP 2 G.H.W.

Walk with Inspector H. Drew round district bounded on the North by the Whitechapel Road, on the East by Bedford Street, on the South by Commercial Rd. E and on the West by New Road: being part of the parishes of St. Philip or St. Mary.

Starting at Nelson St. very poor Jews, 2 storied, holey curtain paper litter, straw in street, doors open, light blue on map Pink, but worse now. Cameron Place on the North side marked on map ^{light blue} people; is respectable, 2 storied, 11 houses, only on West side of St. trap between walls of the back of Bedford St. & the paving in Cameron place. shd. be purple. "Decidedly better than Nelson St."

Into Varden St. poor Jews, 2 storied, houses well built 1820-30 type. The road between Turner St. & Bedford St. is poorer than the bit between, Turner St. & New Rd. as l to purple. Then South down Gray St. 2-st. West side poorer than East though at bottom (S) on East side is a family of Italian ice cream makers.

West into Philpot Rd. a very broad Rd. with the Land on Stoop

Mildmay Mission

Newark St.

Jews.

N. end of Philpot St. pk b^o

Rutland St. E of Philpot - purple
to Jubilee St.

Newark St. to Sidney St. purple

Oxford St. { E of Philpot St. - purple
to Jubilee St.

Green Street - purple

109 57
Stop at the N. End. Pink as map. Some parts better; Hospital
nurses in House at corner of Oxford St. N.E. end. Mildmay
Medical Mission on East side, large Bldg. Several poor
Jewesses sitting on steps outside with sick children
waiting for it to open. Medicine given them with a
prayer, only the very poorest go, don't think any are
really converted, said Drew. N. end of Philpot St. past
Varden St. is quite pink barred in character.

West into Rutland St. 2 st. purple rather than the pink of
the map, rather better than Bedford St. Several Jews
N. into Newark St. late New St. more Jews, purple with
than pink. The large red brick Church of St. Philips
is here. 'built by the present rector at a cost of
£40,000, but as the parish becomes more Jewish is less
necessary each year. has poor congregations' said
Drew. Oxford St. 2 also purple. Jews.

Into Turner St. 2½ st. medical students living at N. end
pink as map. much homework carried on in the
houses - tailoring. Jews. North into Green &
Mount street. Green St. purple to blue - not
pink - poor Jews - nearly as poor as Bedford St.
Mount St. 3 stories & a cellar. Probably 5 or 6 families

Raven Row.

East Mount St. N of Raven Row - pur

Cotton St. - purple

Raven Row W end W of Cotton St

- lb

Goakley's Buildings - lb

Jews.

in each house - many work rooms - purple to pink -
East Mount St. 3 x 2 st. less good N of of
Raven Row. but pink lower down as map.
Cotton St. behind it hardly looks as poor as light
blue. mixed class - many Jews. stables & workshops
on the East side. The W end of Raven Row. to
the north of it looks poor. lb. rather than pink
of map. Drew said 'very poor'. Goakley's Bldg
on the north side (apparently the servants almshouses
houses marked on the map) built 1804. inhabited
quiet, poor, children clean though pin a fore &
clothes rather ragged, all with good boots. 2
storied cottages - purple to lb. not coloured on map.
The West end of Nelson St. bet Dunross Rd & the
New Road is better than the East end - pink
to purple - with the ex of the front ho on the
N.E side. wh is dirty poor & evil looking.

General Remarks. Jews coming in or already in
most of the streets spoken of above. In consequence
great difficulty in distinguishing between streets
that shd be purple & those that shd be pink.
Drew

Drew said that ~~they~~ ^{the better streets had} all gone down in character in the last 10 years because of the Jewish influx but that some of them were rough. In the Jewish ho. with its greater crowding there is no china pot with an evergreen plant in the front window or a round table which in North London seemed to be the sure mark of a 'pink' character. Again there is greater visible dirt in a fairly well to do working class Jewish home than in an English one. As far as outward looks are concerned nearly all the streets belonged to the 'purple' category.

No complaints Drew said as to people sleeping in the streets. Jews here are not so poor as those that crowd into the inner circle of Whitechapel - all children seen looked well fed & were well-booted.

As to warning publicans not to serve men on the verge of drunkenness. Drew said magistrates now thought it was the police's duty as much to prevent as to detect crime, therefore they had to warn Publicans. But he admitted it was a counsel of perfection & in practise was not often carried out.

Serving Drunken men.

Dr. Rev. the Hon. A. Lawley. former rector of St. Andrews
Bethnal Green.

State of Parish after incoming

Jan 28.

Parish
9/13
12^a

CP

J.H.D.

Interview with the Rev. the Hon. A. Lawley, now rector
of St. John's Hackney: for 10 years vicar of
St. Andrew's Bethnal Green.

He is a tall man, pale, ascetic face, no nonsense about
him: is married to a sister of Donaldson (of Hackney
Wick): he was in the running for the Bishopric
of Stepney (largely given to Winnington-Ingram)
These 3 have always worked in together - He is about
forty years of age.

It is two years I think since he was in Bethnal Green which
he left by reason of ill health brought on by overwork

Under him at St. Andrews were 4 or at times 5 curates
all living in the same house with him. When
he first came to the parish the staff consisted
of a vicar & 2 married curates living outside
the curate parish & a certain number of ladies
who came down from the west end to help
during the London season. There were two
married

plenty of good curates

Difference bet Hackney & B.G.

Visiting

17 57
married curates were given livings in the country soon after his arrival: the west end curates were told that it would be better if they did not come at all. After that he chose 5 from the numbers who offered themselves. There is never any difficulty about getting good curates in the East End, all keen men, my difficulty lay in keeping them back, here ^(in Hackney) I have rather to urge them on.

In Bethnal Green the limits of the parish were strictly territorial. In Hackney they are more congregational. People have an extraordinary affection for the parish church ^{here} & will come from great distances to have themselves or their children baptised, married or buried in it!

at Bethnal Green the parish was strictly divided up for visiting purposes, each curate & himself had a district allotted to them, under each curate there was a district visitor, all complaints passed in the first instance to the curate & then to himself as a court of appeal. Every Monday morning they met together & after a prayer compared notes. Relief was allotted according to needs.

Importance of Sunday Schools.

Mothers meetings

Sunday schools.

119 57
needs & means. Only one exception, whenever the district nurse recommended expensive foods for the sick they were always granted whatever the cost.

He attaches great importance to Sunday Schools, Mothers' meetings and District Visiting. 'District Visiting is the unique heritage of the Church of England.' He has never been able to understand why the dissenters don't visit, but they don't. Once or twice he has been sent for by dying Noncons. 'Why don't you send for your own ministers.' 'Oh, his only good in the pulpit.' was the answer.

Mothers' meetings he said may be as demoralising as anything in the parish but they may be the reverse. He has seen a whole district in Bethnal Green civilised & he believes mainly through the mothers' meeting. It was a district of free family fights. Always a row on between wathike mothers. In 3 years this was altered. 'But you must choose carefully those who are to lead them: never ask mothers to come, let them come because they want to.'
Sunday schools are more useful to the teachers than

Dapaneloup system

Prize-giving

121 57
than to the taught. Their real value is to the teacher. Sense of responsibility, esprit de corps, visible way of helping the church - all encouraged & hence encouragement given to 'that most important body of all, the church nucleus'. He prefers it to the Dapaneloup system "unless you happen to have a Dapaneloup man among you"; but it's the man not the system that makes the difference. He used to teach his teachers & then lets them teach the children. Children sent partly to be got out of the way, partly tradition, partly hope of treats & prizes, partly to learn. Prizes he stopped at once & so were treats unless the parents wd provide for the journey money. result. at first a falling off but afterwards increased respect felt for school & increased attendance. In Bethnal Green he had 1000 at Sunday school. Here in Hackney in a parish twice the size he has only 500. Last Sunday he told Superintendent he was going to stop all prize giving at Sunday sch. in Hackney. But they will all go to the Wesley

Leakage after Sunday school age.

Church nucleus

Wesleyans & Baptists: let them go: I won't have chil-
dren bribed to come to school: there are many better
of spending ²⁰ here in a parish with a debt of £3000 on
its school than prize books."

The great leakage occurs after Sunday school age.

To continue at Sunday school is to put yourself
a child: children of 14 won't do this. It is not
that they wd rather not but that they wish
to show outwardly that they have ceased to
be children, that is the main reason why they
leave. For a long time he cd hit on no remedy.
Then he tried refusing admittance to Sunday school
at 14 yrs of age. They were turned out never
mind how much they wanted to stay; & he
started a Sunday class: the same thing as they
had left but ^{with} a different name which was
consistent with their dignity & proclaimed their
age; & was successful. "It is in little ways that
you make a great organization successful."

His plan now is to ~~be~~ make sure of a small number
who shall remain permanently faithful to the
church. Know the reasons for her existence &
the

the why & wherefore of everything that she does! This nucleus is the hub of the church life in a parish. Like a corporation it never dies & when once properly started is independent of a change of minister. The personal influence of a minister may be enormous, often is, but the reaction is the greater when he leaves. What he has to do is to see that those who are not so likely to leave as himself are the conduits of right thinking & right living to the congregation rather than the minister himself. He said that the clergy should feel their congregation in this way indirectly rather than ~~indirectly~~. He admitted one great difficulty is that the church nucleus were the better men in a poor parish & for that very reason were more likely than not to move out of it as soon as they could afford to. but he was sure that the principle was the right one. "Begin small". After 20 years experience he is sure this is the only true road to success. As to large congregations the easiest way to get them ~~is~~ to get up a controversy with your neigh.

Small beginnings

Sermons.

Conditions of success.

neighbours. 'Crowds will come to hear one parson attack another.' The next best way is to denounce your congregation, Hood & thunder. But he approves of neither. The most popular part of the service, he said, is always the sermon & in practice he has found the most successful of his own sermons to be a course of teaching upon the ^{Lord's prayer} ~~prayer book~~ or catechism. The reason for everything is what they wanted to know in Bethnal Green.

The first condition of success in a working-class district is to work hard. Nothing will ever persuade the working man that the clergy are not paid out of the rates. He can't conceive ^{how} they ever got that idea, but there it is & though he has argued it with them again & again it is no good & it is a fact that every person must accept. But they do not mind paying if they see the parson really working. In ^{London} for instance the working men wd. willingly 'subsidize'. For this reason he thinks that a working man if he had his choice wd. choose to be a Dissenter rather than a Church man.

for

Dissenters pay ~~for~~ results which are forthcoming because if they were not payment would cease. But dissent is expensive. Again the church service was constructed for instructed people. Workingmen don't understand it at first & for that reason dislike it. The church in a working class district is handicapped by her service until the congregation has been trained to it by sermons.

Every religious man he said is a target in the workshop. Samuch is expected of him if he gets religion. But I don't think it amounts to actual persecution unless the man is a fanatic & you will generally find that it is the religious man who is entrusted with the shops club & sick funds. This he has seen several times.

In Bethnal Green he said he thought the church had never quite got over the way in which it was started. "Irrespective of need or preparation of audience ^{churches} were dumped down by acts of Parliament." Instead of by living agents the church in B.G. was started by bricks & mortar. He said this mistake had often been made by the

Religion in the workshop.

The church in B.G.

Dissent.

131
the church & ascribed a great part of the success of the 'Romans' to their consistent following of the plan of creating a need & then making people pay themselves for the means of its satisfaction. He hates Dissent, though he has many good friends among dissenters. It seems to him abominable that in the Church of all places there should be difference. Twenty years ago he thinks that the 'piety of the nation' was really with the dissenters, now, since the anglican revival it is with the estab. Church. 'Nonconformists are too political, this has been their ruin: on a platform they are well enough but in organization & real influence on private life & action they are nowhere. He complained of their unwillingness to shew the records of relief given or of members of Mothers' meetings so as to prevent overlapping. Also of their want of method in treatment of the poor. In hard winters they have the money but no idea of those to whom it should be given. Then it is that they come to us.'

Then he spoke of the devotedness of the members of the

Salvation Army.

The worst streets in B.G.

133
the salvation army but said they had never caught on in Bethnal Green. At first they met with hostility, & they prospered under persecution: when that ceased they failed. He criticised their methods. In the roughest & most criminal of the streets in his B.G. parish - Gale's Gardens - he has seen two 'salvation lasses' singing & going into the houses. They were good looking & the treatment they met with was brutal. Thought it was wicked to expose girls in this way. Another man he knew one of the best & most earnest of men, was literally starved out of the army. He had given up his trade to work for them; for pay he only had what he could get; in Bethnal Green he could not get enough to pay for his daily bread. Finally he was very ill; he sent for Lawley & in the end was taken in by a Church Convalescent Home.

The worst streets in St Andrew's Parish are Gale's Gardens next the railway (dark blue in map), & Pitt St (light blue): Pott St. (C⁶⁵) is nearly but not quite so bad. The black spot in Gale's

Crowding

The weavers.

S^o has been pulled down. Parliament S^o (dark blue) is still bad. The worst characters are the rough thieves. There is no betterment as yet; the clearances in Boundary S^o prevented that. Some of the roughest characters came thence to Gales Gardens & Parliament street.

Crowding is now greater than it used to be: Building enable more people to live on an acre than formerly: Even with the poorer families there used to be a regular migration to Plaistow or Ilford in the summer & a return for the winter; this is not now done because of the uncertainty of finding house room again. He thinks that life in Buildings may make for improvement if the Superintendent is strong & the managers careful. "If not, they are a hell." In places like Gales Gardens the male inhabitants as a rule go to the country to brick fields in summer.

The weavers were a respectable body set of men, but 'cramped in body & mind, caring for nothing except their work'. He spoke of them as 'curious cantankerous & warped'. It is the case of an industry where

Here the work is too absorbing where body & mind ~~were~~ are bent to the loom only, where outside interests have no entry, where every person whether political or religious is judged by his possible effect on the weaving trade to the exclusion of all other considerations. Drink among both men & women shows a slight tendency to improvement. In Bethnal Green ~~there~~ never has been a shame to any woman to enter a public house. He was astonished therefore the other day to overhear in the street at Hackney a woman saying she hoped she should never be brought so low as to enter into a public house - it shewed the difference between the two places.

of prostitution for hire there was none as far as he knew in St. Andrews Parish: much looseness of relations & some marrying within the prohibited degrees, especially of the deceased wife's sister. But he said among the very poor there was a strict code of outward decency which was not to be violated with impunity. Cited the case of a coster who had started living with a woman who had nursed his wife during her last illness, as soon

Drink

Prostitution

Police.

Said he thought police unaccountably stupid at times. Case of murder in B.S. clergy, all knew the murderer. Detectives came from headquarters etc but never found him out.

as the wife had died. The whole street felt outraged & the pair were forcibly ejected & had to go & live elsewhere. In this case cohabitation with the woman during the wife's illness had been condoned. On the whole he thinks the police do their duty well though there are queer ones amongst them as there must be among any large body of men. He knows one or two very well but he has never been able to obtain from any one of them an admission of payments made to them irregularly, even though he knew that all the big shops in the Bethnal Green Road paid regularly 1/- a week to the man on the beat; the same was paid by publicans. 'But it is nothing large enough to be a scandal & is done more that they should do their duty than that they sh^d. neglect it.' The pressure put upon them to accept payment is very great; he did know of 2 or 3 who refused it 'but they were only two or three' & when a policeman was called in to stop family rows the regular thing was to offer 2^d. or 3^d. & it was always taken. Personally has Vicar he never offered any.

Health.

Local Govt.

Practise of confession

141
anything to them but he is sure that his ^{school} Superintendent did so. Then they lose their tempers occasionally & run lads in for being drunk & disorderly because they laugh at them in the street. One lad he knew about & gave evidence in the police court in his favour to the complete upsetting of the police evidence. Then he has seen them being handed drink after closing time. But the abuses are not serious & are getting less than they used to be.

As to health, B.C. is on sand & healthy but the Public authorities are 'sloshy' if they prefer to employ 24 men rather than ~~the~~ ³ machine sweepers & time & again he has seen the men sitting on their brooms until someone in authority has appeared when they wd start sweeping vigorously. The employment of men is a form of patronage which the Board are too weak-kneed to be willing to give up.

As to confession. The great mistake that has been made, is to regard it as something secret. The Prayer book allows it "not as 'must' or 'ought' but as 'may'". It should be a medicine but not a food, an aid to independence & not a pauperizer.

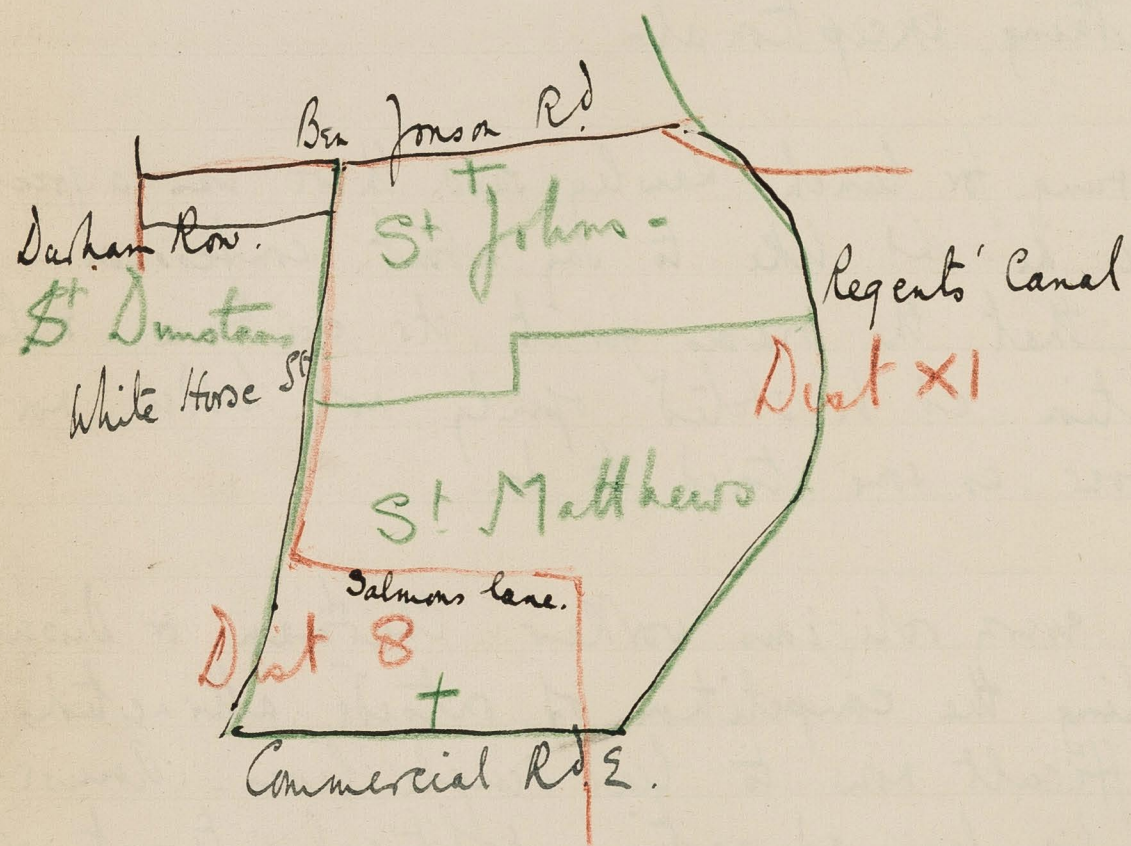
It should not be in the hands of young curates. If people ask for it give it them but let them understand that it is something exceptional.

Here the bell rang for lunch. Lawley said there was a great deal more he should like to say about confession. He wished that the reasons for it, its existence & its justification could be stated openly, not hidden nor glossed over as some tried to do.

He said that every religious worker, Curate or Vicar was feeling the competition of outside attractions. More difficult now to lead simple lives. Amusements, bicycles, education, political interests, etc. in consequence, Church was giving & would give up as much as possible of her social work & in future stick to religion only.

When he started at B.S. he was not hostile but lukewarm towards C.O.S. This is one of the things he most regrets. Experience brought wisdom. Is convinced this is the real way of dealing with poverty. As soon as he was convinced he joined their Committee & for the future will always back them strongly.

District covered.



Near St. Dunstan's Ch.

Market St. purple.

Jan 27.

~~Dist XI~~ 48

Police
10
3
S.H.D.

Walk with Inspector Drew round district bounded on the north by Ben Jonson's Road, on the East by the Regents' Canal, on the South by the Commercial Road East & on the West by White Horse Streets, being part of the parishes of St. Dunstan's Stepney, St. Matthew's & St. Johns.

Starting at Dasham Row in the N.W. corner, respectable 2 & 3 storied houses, shops, below frequented passenger way, at sort of St. Paul's Churchyard of the East end, St. Paul's being St. Dunstan's. On the North side of it Ashfield Place. Black in map has been closed by vestry, & is boarded up. Market St. dark blue on map, is not worse than purple to be. not rough a few small shops, 2 st. Whitehorse St. narrow, a market st. not for cotes but the shops all have berrows on the pavement Eastwards the first court on the South side of Ben Jonson Rd (not colored on map) is rough 2 storied, doors open windows broken, called Hope

Slope Place - db

Stalley Street purple

Donkey Row.

Barrow St N. end db

Hope Place. shd be dark blue, the next is Taylor's Place also dark blue as map. rough set of men here & all round working in gasworks in winter, brickfields in summer. Benson Rd. here purple as map. South along Car St. & west into Stalley St. which drew spoke of as being about the best of all the streets in the Donkey Row area. On map light blue is now perhaps purple. Has 2 courts, that on the north side called Providence Place leading to some 2nd st cottages, clean windows, respectable looking but it is a rare place for Sunday gambling; that on the south side to the backs of the heaving St houses & called Poor. the street itself is of concrete & clean. Then into Car St. known to inhabitants as Donkey Row. North end is no longer purple, rather dark blue. rough, windows broken & dirty, children with unlaced boots playing with the dust heaps in the street unnoticed, dirty & ragged but well fed looking. Fish cures. some shops. many lads loafing. Industries are gas works, fish curing, costering. Boxing a favourite amusement. Is well known for it though not quite so well known as Bermudsey. The Champion boy brises was playing pitch & toss as we

Street-gambling

Elsa St (late North St) Wens db

Fish cures

Eastfield St db

1497
we passed. House 2 storied. flush with pavement, yellow brick
rents 8/ to 10/ for 4 rooms. Very trouble some property.
All the streets north of Salmons Lane are variations
of the above, more or less. The whole poorer than
it used to be. Drew spoke of it as as bad as Notting
Dale where he once was pressed; people quite as
rough but Nottingdale more vicious because of the
numbers of low prostitutes which are about here.
Think nothing of assaulting the policeman. The
corner of Elsa St & Carr St is noted for street gamb-
-ling which nothing seems to stop. Thieves scattered
about but not a regular thieves colony. Elsa St
late North St narrower, 2 st, dark blue; that part of it
East of Carr St full of fish cures, cart loads of
fresh haddock standing at doors, also sacks of sand
used for the curing, stables at NE end with
respectable traps; these cures make good money
when fish is plentiful & cheap, their customers
are shops both in City & West End, fish done
up in neat parcels & driven off in the morning
'You wd never imagine they came out of such
dirty holes.' Eastfield St. lb in map, is the same
rshd.

Entry of Jews.

Maroon St. E of Conder St. lb
W ——— " ——— purp.

Duport St. - db

be dark blue. Met children coming out of school. rather ragged. all booted. minority wearing hats. all looking as if they had enough to eat. On south side of St. the first court after crossing Carr St. is Maj's Place. 12 cottages one room thick, most windows broken. two now doing time from this court, regular tigers they were Union Terrace. the next ct. is like it, so is Beard's Place. at the back was a pent house literally covered with old coats of bread. All dark blue to black. like it is Reform Place. which make up the 4 courts out of the south side of Eastfield St. Houses going cheap here. Jews are beginning to buy some up but they dare not put any Jewish tenants in just yet, they wd have too hot a time, they will wait till they have got a whole street, then Jewish tenants will come in en bloc, rents will be raised & the former owners given notice to quit. Maroon St. 2 + 3 st. west end purple as map but is lb. past Samuel St. going east. out of it on the south side beginning at East end are Duport St. at Ave end 6 new 2 st. cott built 1897. better than rest is lb. the rest as map dark blue. Its more

Brenton St. lb
Samuel St. lb
Bonder St. lb

Aston St. - purple

John's Gardens & Regents Ct.

John's Gardens - db

Regents Court - db

its more the people than the houses that are rough. Blunt
St. 2 st. purple to lb. not quite so rough as rest. Brenton St.
poor working class like Perth St. (out of Charles St near
Arbour Square) lb. not purple. Samuel St. same,
Cader St. same. 3 or 2 storied tenements NW end.
York Place. on the north side of Mason St. opposite
the north end of Samuel St. is a court of dwellings
entered through a gate, 3 storied, built 1882, very
rough, dark blue. Anta St. south of Copley St.
better than north of it but more purple than
pink. East along Repton St. just across Carr St.
on the east side of Railway is a small court not
shown on map called John's Gardens. 2 cott only.
very poor indeed, dark blue, small child crying for a
-nother slice of bread but not looking ill fed, water
supply from tap in middle of court. Further south
is Regents' Court. black in map 'rough but not
worse than the others'. very poor, one child boot &
stockingless. Some Irish here but dark blue.
South into Salmons Lane & westwards. 2 1/2. rather
better west than east end, some carmen; pink to
purple. N. up Ashton St. into Matlock St. (late
Wilson

Better quarters South of
Salmon's Lane.

York Road purple

Raby St purple

Brunton's Cottages (E. side Railway Place) lb

Wilson A) pink as map, 2st + cellared houses.

South down Barnes St. the name given to York St west, rather poorer st than I md. purple to pink Jews coming in. East along Chesley St. late Henry St, resp. purple to pink across York Square. & York Road (late York St E.) houses 2 storied + attic + cellar. letting for 17/- per week.

Square fairly kept by the residents. South down York Rd North up Raby St. poor, light blue rather than the pink of the map - East under railway Bridge. The dark blue piece on the south side is called knights Buildings - 2 or 3 storied houses with palinged gardens in front. Some very rough - dark blue as map. South along Railway place (late York Road) houses on east side poor, but not worse than light blue, on west side are railway arches & often a house at the far end of the arch, tenanted by small cates & com. tractors, trucks to be let out at 2^d per hr, cates barrows at 3^d a day. (a truck is a two wheel high cart with a handle to push with)
Brunton's Cottages on the E side of rlwy place - light not

Brunton St db

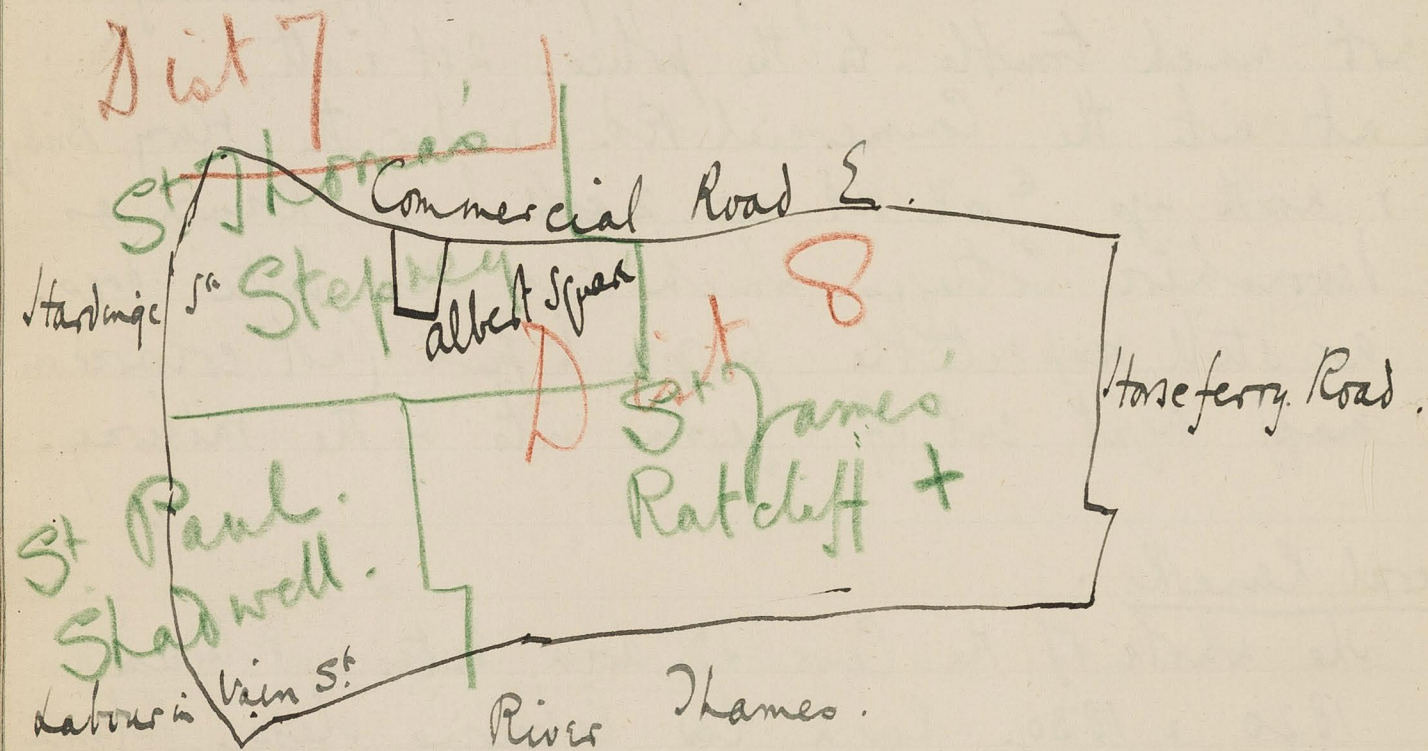
Date of Building of District

not dark blue, only poor. Brunton Place. Dark blue is rough - dark blue as map, very poor dingy looking but not much trouble to the police. 2st & att. Then out into the Commercial Rd. under the Holy Bridge & north up York Rd are 2 ~~coll~~ houses known as Devonshire Cottages which have been better dogs - are still respectable people to peak (not coloured on map) light cut off & gardens into by the railway.

General Remarks.

The whole of the Carr St area dates between 1820 & 1830. Rough low labouring class. Interesting to note probable invasion of Jews, "the only prospect the district has of ever becoming better than it is." The amusements of the dist are boxing, friendly leads & bird ^{shows} contests - but said drew it is nothing compared to Bethnal Green for bird fancying. The worst bits drew said were. The whole of Elsa St Eastfield St, & Carr St. The east end of Mason St & Regents Court. Public houses & beer houses small. 'Each with its own special clientele'. The street game everywhere for girls was battledore & shuttlecock.

District covered.



Albert Square.

Albert Square pk 6⁴/₇

January 28 & 31st

District 8 (12) F. H. D.

Walk with Inspector Drew round District bounded on the North by Commercial Rd E., on the East by Horseferry Rd., on the South by the River & on the West by Labour in Vain Rd & St. James' St. being part of the parishes of St. James' Blyney, St. Pauls Shadwell & St. Thomas' Blyney.

Drew does not really know this district well. It is properly under another inspector. Supt. Mulvaney however thought that Drew would know it better than the man who has only been there 3 months so appointed him to go round with me. Drew takes charge of it from time to time but has never spent more than 6 weeks in it.

Starting at Albert Square in the NW corner, not so good as it used to be. 3 1/2 stories houses. Lodgers usual pink barred rather than red. Square fairly kept. Supt. Mulvaney lives in it & says the place has been better days. No Jews. ^{Very} Eastwards, then South

Stepney Causeway.

Roker's Drift.

Want of food.

Hilton St - lb

James Place - db

South down Havering St. pink as map, 2 1/2 storied, resp. working class - 2 families in each house. West end along Ann St. purple ~~map~~ poorer - common. drink. Bower St. 2 1/2 st. one or 2 Jews. like Havering St. 1820-30 houses.

East along Comm Rd. south down Stepney Causeway. St. Barnardo's Home takes whole of SW end. at N.W end next beer house is a rough looking common lodging house, over & behind a sweet stuff shop & kept by its owner. One barefooted boy in street.

Hilton St. on the East side. poor. 2 st. light blue not pink as map. at the bottom of the ^{Stepney} Causeway on the West side is James Place entered down steps known to the police as 'Roker's Drift' - dark blue rather than the light blue of map - very poor. rough. narrow with dead wall facing houses about 7 ft from them - not a hot bed for thieves though there are some of them. 2 storied - windows broken, dirty, children dirty two without shoes or stockings, doors open, bare dirty rooms, arms & legs of ch. unnaturally thin, the first time I have noticed distinct want of food, little play

Brook St.

Common lodging houses.

Cosh's Buildings.

- db

playing. Half way down the place the Ann St Public
House has a back entrance. up steps at west end
into Swanport St. East along Brook St. dark blue
as map. rough poor. many common lodging houses.
no brothels. East past Friends' Meeting house, to
Cosh's Buildings which take up the space between
School house St. & Collingwood St. 4 storied built
1886. taking up space known as Dunstan Place.
the centre block is very bad. thricks of women
being ill treated as we walked through, excitement
in court, all women at their windows, one saying
'he deserved a good deal but I hope he won't go too
far'. ragged, dirty, square jawed women, some with
children. a very rough place. all ch. booted -
on map light blue but certainly dark blue, even black
in centre block. roughs from neighbouring clearances
have come to live here. Walter Place a cul de sac
on west side of School house lane. 3 st. high. dismal.
windows broken. ragged children. one mile of 8 or
9 steps scabbing steps & flags in front of house, one
knees, calling 'look mother aint I getting it clean
& dipping a rag & brush into a pail beside her as if she
was

Three compass court.

Causeway b^e d. b.

Beachcroft Bldgs. - pk.

Ashley Place lb.

Elizabeth Place - lb

Little John St^e lb

Hilton Street lb

165
were at least 15. Only 9 or 10 houses in the S^t. At the S.W.
bet James Pl + Brook St^e not shown on map. 8 houses. 2 st.
Corner to Causeway Ct. all windows broken. dark
blue. Drains stopped. overflow of everything into
the court. This Ct is not marked on map. it nearly
touches but does not meet 3 Compass Ct. ~~at~~
East along Brook St^e. The first Ct on the north side
is 3 Compass Ct. also dark blue. On S side of Brook
St^e where formerly was Harris Ct are the Beach
croft. LCC Bldg ugly but respectable. purple -
replacing the dark blue bit of the map. North
up Colborne St^e. 2 st. light blue rather than the
purple of map - a little better than Brook St^e
was all drew w^o say of it. West along Brun
smick St^e. 2 st. rough dark blue as map but not
much trouble to police into Dorset St^e. 2 st.
purple as map, at south end on east side is
Susannah Row. built 1828, poor rough, lb. rather
than dark blue as map & on west side Elizabeth
Place. of same date - lb. not pink, just dr. of
railway arch is Little John St^e. (late Ashley St^e)
3 cottages. 2 st. l to dark blue - purple on map. &
north again is Hilton St^e. (late John St^e). poor
lb.

Brimble St.

Ratcliffe Square - lb

Clearances.

light blue not pink.

North into Commercial Road then East to Ratcliffe
Square. 2 st. only poor, light blue, not the dark blue
of the map, wood sawing yard SW. side. just south of
sluy are 2 cottages, 2 st. tall. South down Periwinkle St
3 or 2 st. houses on N.E. side are down. dark blue as map.
'very rough coal porters here'. On the east side of it is
Manor Court. 4, 2 st. cott also dark blue & Giles Place
on the west side, dark blue, wash hanging across court.
Into Brook Street & Eastwards, turning north into Black
Ball Court. - dark blue as map, there is only one entrance
now, the north side has been cleared, the other entrance
shut up (see map): remaining ho & inhabs, very poor
very rough, cistern on small out house in court with
taps the only water supply, woodchoppers at N. end
the wall at north end palisaded off from clearing with
wood & barbed wire. bread lying about. 2 children
barefoot - dirty. The next Ct East is Grove Court.
houses have been done up but v poor, chickens, wash,
dark blue as map. The next is Ball's Building.
2 st, rough, dark blue, all doors open; Then George St
cemen, coals, 2 st, purple to lb. (purple in map). there
is

Medland Hall.

London St.

Narrow St.

is no court east of George St. this one is shown but not color-
ed in map.

South down Batcher Row - cermen. purple as map. East
to Medland St. loose women, 'sailors widows' here
dark blue as map. Medland Hall on South side - being
altered or rebuilt. Brings a number of undesirable
loafers to this quarter, the court on the South side
of Medland St. has been demolished, has been down 12
or 18 months; it is still an open waste - North up
London St. black as map very rough like Medland
St. between Horseferry branch Rd & London St. the
court on the East side is closed. A working girls
Institute in connection with St. James Ratchiff
is at the NW end. 300. below it are shut two
being half down. SW St. N. end - Street well paved, clean
no litter of paper or bread - children looked but
ragged.

East thro Rose Lane. 100 on S side - fine old ho. untenanted
& has been empty more than a year. South down
Horse Ferry Branch Rd, at SW end a new maternity
& corner court. West along Narrow St. all
warehouses with passages across the St., at lower
end

Clearances in the Orchard.

The Orchard - purple

Collingwood St - purple

end of London St. a large rag & paper warehouse. Working
man's Club (affil) closed, to be for sale as warehouse -
Westwards, on the north side is Painters Row. Houses on E
side only. 7. 3 storied ho. very dirty, poor, rough, dark blue
as map 'like London St. in character'. windows broken
stuffed with rags. No exit at north end. The Orchard.
W. to purple - respectable. on map dark blue. Houses on
west side only. Batgers' cooperage on the east, leads
to the open space ^{between Cranford St & Bere St} a clearance made
over 4 years ago by 'LCC'. Cranford St. is the name
given to what was the continuation of Painter's alley.
West past board school next to which are the Beach
croft Buildings (purple) wh. take the place of Harris
Court marked dark blue in map. ugly but solid.
'far better than Cosh's Buildings'. Only 3 ho. are left
at the west end of Bere St. & two or 3 at the
east. Thus a large dark blue patch has been re-
moved. Batgers' jam factory takes up the whole
of the south side of Bere St. with the exc of the
open space spoken of above.
W into Brook St. west, then south down Collingwood St
top. 2nd ho. flush with pavement. children coming out
of

A Thieves' Den.

Corner of Collingwood &
Broad St^s - black

Elm Row.

Love Lane - lb all thro'

Elm Row. purple

of school, ragged, fairly clean, very few with hats. At the
S.E. corner where Collingwood St^s meets Broad St^s is a
common lodging h^o - a regular thieves den - black.
called Ratcliff Chambers.

The first court west of Collingwood St^s is a stable, the second
is down. North up School St^s Lane. Cooper's almsh^o
Houses on east side (founded 1539. rebuilt 1796) -
West into Glass House Fields. Morris Jam Factory - 4 resp
2 st. cottages at SW end. purple.

Minto Brook St^s South down Love Lane. N.W. side is a
court not marked on map called Love Lane Square,
3. cott. blue. South of Elm Row. Love Lane has
a rough character almost dark blue (on map purple)
West along Elm Row. a few houses, purple (map lb)
respectable working class, leading down hill to
large block of Peabody Buildings. Childrens
Hospital abutting on West end of Elm Row (former
Gap almsh^o houses) south into what was formerly
Charles' Place. (lb. on map) of which only a
wood choppers shed remains, & out into Shadwell
High St^s: all between the Peabody Bldgs and
the High St^s is down. South down Love Lane
into

Clearances in Lower Shadwell.

Market Hill - lb.

into Lower Shadwell. Great clearances here owing to Fish market; all is down between Love lane on the east, Lower Shadwell on the south, Labour in vain on the east & Garth St & Leading St on the north - with the exception of a public house in Lower Shadwell. In the same way the part ~~of~~ bet. High St Shadwell & Garth St is also down. In Garth St remain only 2 ho at the west end & a public house. The covered in Fish market lies between Lower Shadwell & the river & with the divide Refrigerator Co takes up the whole river frontage, in the open space between Garth St & Lower Shadwell is a long covered corrugated iron shed open on all sides. The Triangle south of Leading St has no houses (thus removing a dark blue patch), instead an open waste where boys were playing football. Dow said the Fishmarket was just paying its way. North up Market Hill (the continuation north of Labour in vain St) houses on lower level than road, poor 2 st. ho. lb. rather than purple. East along Nunmouth St only 4 houses, clean, lb. as map. North up Hopes Hill lb. as map. East along middle Shad.

Spring Gardens - lb.

Respectable Streets north of Cable St.

Shadwell . 2 st. lb. as map. poor. no trouble - much bread lying about. South down Spring Gardens. also light blue. is dark blue on map but Drew said it was just like the rest. This forms the cont. of Path St. (the bit between Middle Shadwell & the High St. ^{near} is all down)

North across Cable St. respectable working class. up Starbidge St. 2 st. purple to pink (in map pink) like it is Alfred (late Thyrsa) St. on the north side of railway is Downton late James St. poor narrow - stables under stony arches on south side purple as map - Thomas St. 2 st. built 1849. purple to pink. Ronald St. the same. Strel's Lane narrow. south side purple. north side being rebuilt. Through N End of Scrimport St. pink as map & out into the Commercial Road.

General Remarks. Note distinct ill nourishment shown by appearance of children in Rock's Drift; also the comparatively small numbers who are bootless - also the rough common lodging houses in Brook St. & St.

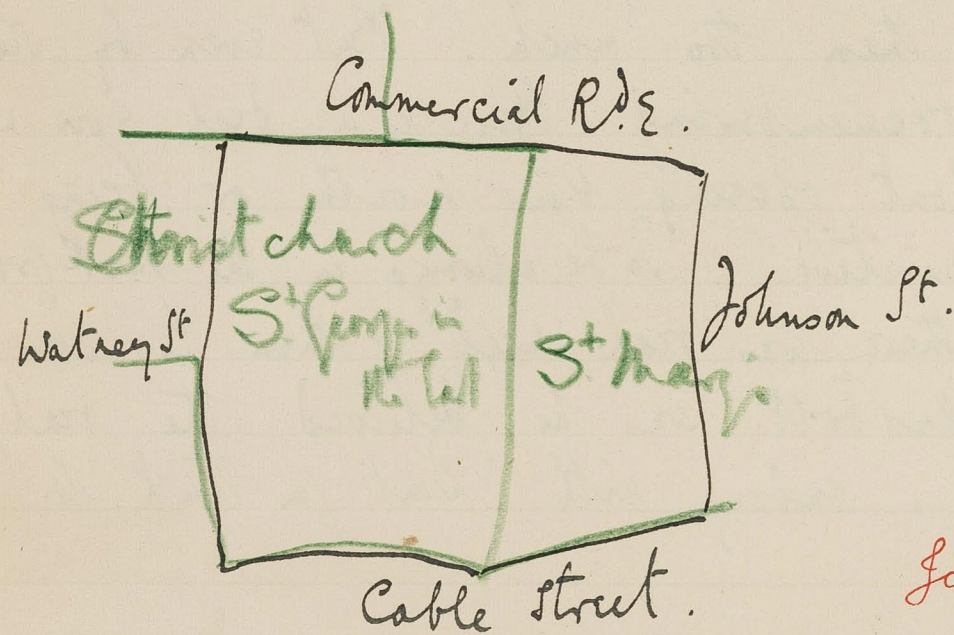
Sir Edward Bradford
on the whole duty of a policeman.

179
St George's Street. District as a whole quieter
than it used to be. Fewer sailors. Less money
to waste. Fewer prostitutes.
Great clearances in Lower Shadwell.

Met Sir E. Bradford on my way to the station. He
on horseback making one of his surprise visits.
He stopped & talked for some time in the street
Said that he hoped I found the police had a
good knowledge of the inhabitants in each
street "for that I believe is the real way in
which they should do their work." He said
he tried to impress on them not to ask questions
but to observe the comings & goings of all those
in their districts. In rough streets he liked
them to know the names & occupations of
every inhabitant. Then if there is any trouble
you can put your finger on it at once &
often as hot check it before its outbreak
by the mere feeling that in some way or other
the police do know about all the goings on in a
rough district." The difficulty, he said, lay in
pr.

preventing the people feeling they were watched: for this reason it was always preferable to do too little rather than too much. But even by standing & watching remembering there is a deal you can find out without opening your mouth or being in the least inquisitive. To be always in the back ground except when there was real need & then to come down like a thunderbolt was he believed the real policy of the police. ending with 'Don't you think so?'

District covered.



Johnson St - pink

Cable St - pink

Joseph St - l.b.

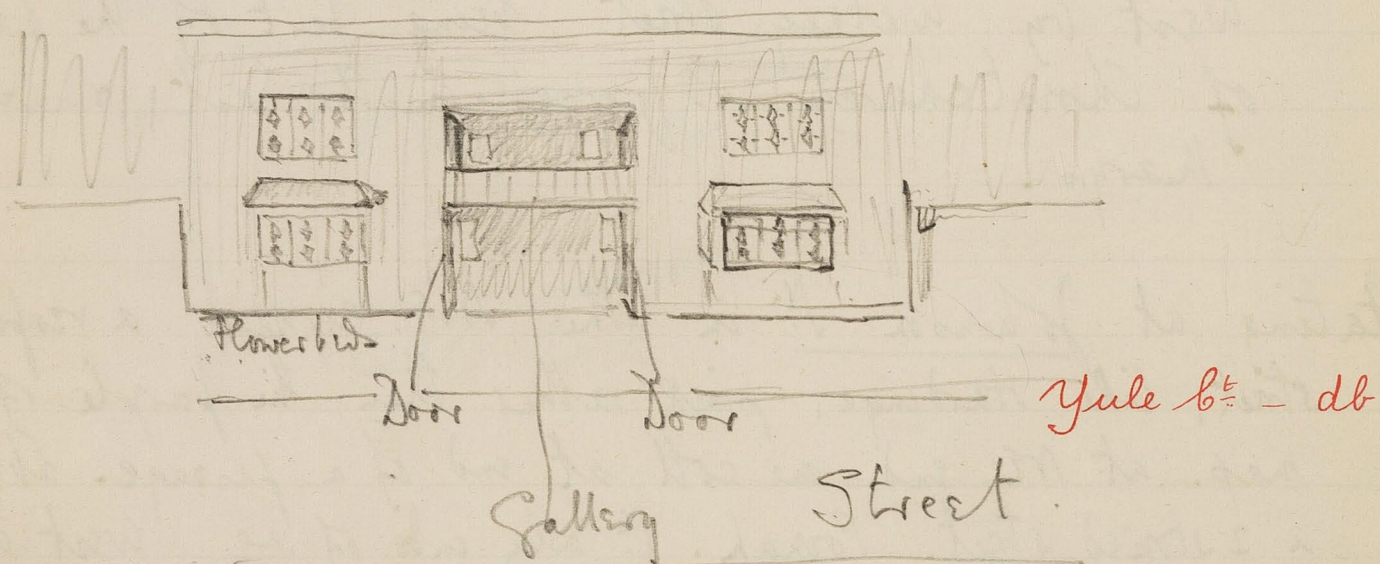
Feb. 1.

Dist 8 CP 2 J.H.D.

Walk with Inspector Dow round district bounded on the north by Commercial Road E, on the East by Johnson St, on the South by Cable St & on the West by Watney Street, being part of the parishes of Christchurch St. George's - in the East & St. Mary's.

Starting at Johnson St in the N.E. corner. a respectable street, like Hardinge, pink rather than the purple of the map. at N.E. end one cott at end of a passage. l. blue. a 2 storied street. Poorah. St. only ends of no. West into Cable St. looks rather pink than purple. No opium dens. North into ^{Joseph} ~~George~~ St which at the north end runs under Railway dock & opens into Lucas St (not shown on map). row distinctly worse than the purple of map. 2 st. windows broken, children with stockings toes showing through ends of their boots, bread lying about, mess at North end, fish heads, paper etc. certainly light blue. West into Lucas St. west side nearly all Jews, much shoe & tailoring home

2 Cottages in Cowley St. built for two families each.



Yule Ct - db

Cornwall Street - db

homework. street rather poorer N of railway than South of it. 2 st on west side, 3 1/2 on E. 3 or four families in each house. Is poorer than Johnson St. character purple to pink. from Cable St into Cowley St. entrance same width as rest of St. not narrow as map.

revisit 2 storied cott, built for 2 families, covered with creepers, a cul-de-sac, quiet street, many policemen living in it. Fresh herrings being cried at 4 a 1/2 (same price as in Watney St. street market)

West along Cable St then North up Sutton Street E. west into Yule Court. (has no opening ~~into~~ ^{into} ~~either~~ into Cornwall St or Dean St as shown in map) purple in map but now certainly light to dark blue, all children hatless, one without shoes or stockings, a low class of labourer about, windows broken, a flagged narrow court. character the same both on north & south sides.

Into Cornwall St on map light blue, now dark blue, much bread in the street, thieves & prostitutes, not so thick as Railway Place, 2 storied ho, 4 rooms for 6 or 7/- flush with pavement, like all houses in this block of streets. Into Station Place. running east.

A few juvs getting into the west end

west

West of Sean Street, black in map & still black, very poor East end, less poor but more vicious the West end: where these loose women live ^{the} houses have clean blinds, curtains, windows. The east end is crushed in by the railway arches & the whole darkened by them. There is now an opening into Waterway St. not shown on map. One shoeless child but several ragged. South down Dean St. at the S. end are 6 cott ^(called Cross Court) in a court which formerly was the continuation of Gale Court. very poor, a Jew, light blue ^{as map}. The South end of Dean St. is equally rough as ^{Station St.} ragged children. On the North side of the Railway are a block of streets all marked purple on map but all now rough & poor. probably dark blue. I did not know if it was so or ~~not~~ but it is likely that the poor from the Shedwell clearances have moved this way. They are to Martha St. Spencer St. Sheridan St. & Telling St. 2 storied, built 1807 same characteristics about all ie bread & mess in street, children with ragged coats & skirts but only one bootless, majority without hats, women sitting on doorsteps with children, doors open, ^{boards}

Martha & Spencer St. - lb
 Sheridan St. - lb

boards across street doors to keep in small children, loose women, thieves, but a mixture in every street. Some houses people, pots in window clean windows blinds & curtains; but the majority not. Many broken windows. Character light to dark blue. All these streets rather better west of Dean St than east of it. Jews beginning to come into Darling St: they already monopolize the west side of Sutton street. In the windows of most of the houses portraits of the two progressive candidates, C. Balian & C. Barratt. Both shopkeepers in Watney street. Balian is known locally as the 'Toffee cooler', he is a confectioner. Motto 'For progress & the people'. Two families in each house; signs that many have been done up in bricks pointed etc. Coster, women, lab, cooks the inlets.

West into Watney St a crowded street market, an English Wentworth street, mostly shopkeepers shops have out the barrows in front of their windows. Some prices - 5lb good turnip tops 2d. Best wheaten bread 4½d per 4lb loaf: 3lb fair potatoes 2d. Fair bacon from 3d to 6d per

per lb; good pork chops 1⁰ ea : cheese 5⁰ lb : butter
10⁰ to 1/2 per lb. margarine 4⁰ to 6⁰, sausages 4⁰,
6⁰ per lb, meat scraps 2⁰ lb. Fair lots 4⁰ to 6⁰.

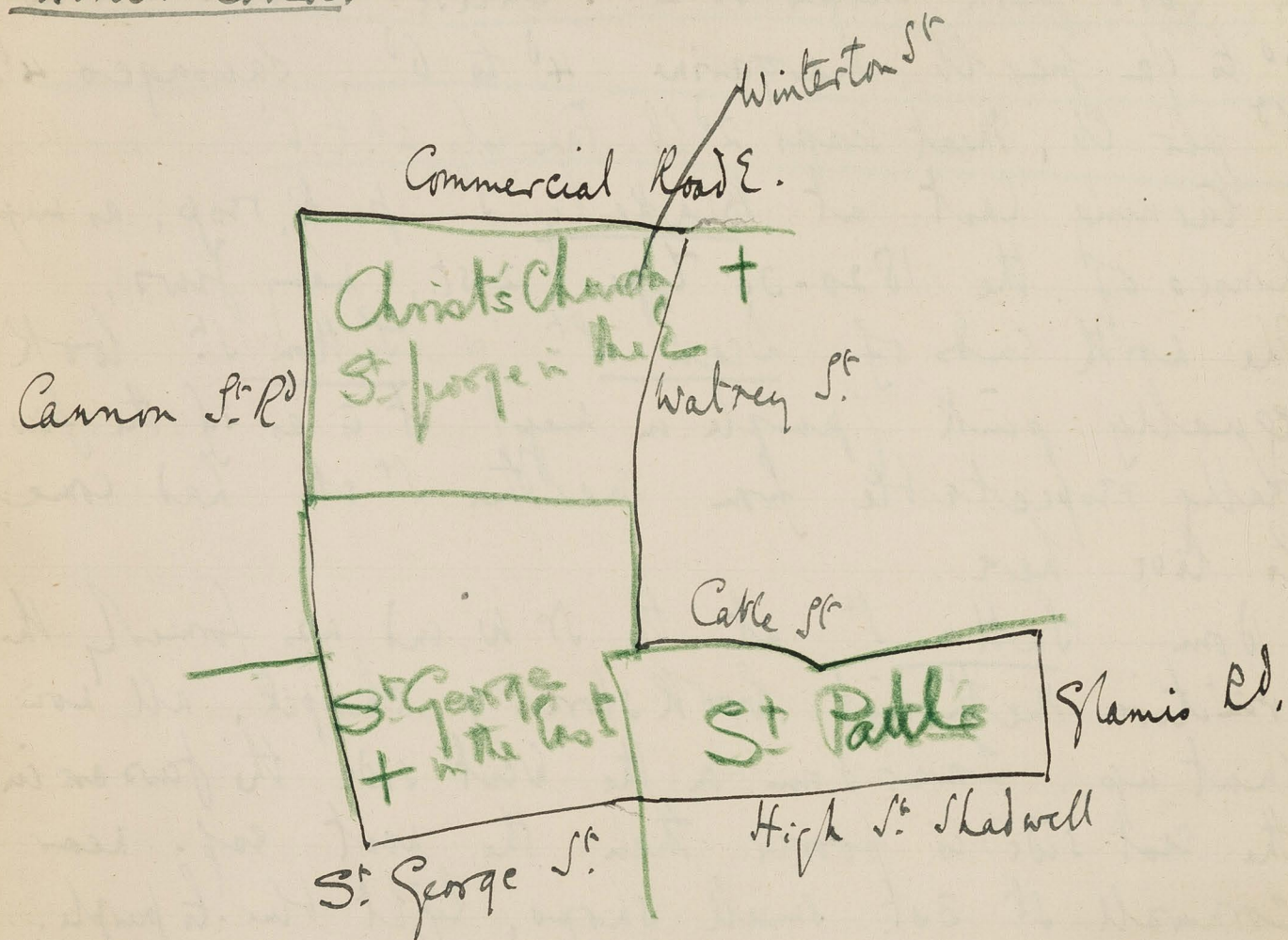
North, turning east at Blakesly St. pink, soap, as map
houses of the 1820-30 type, 2 st., many Jews,
The north ends of Dean St. & Sutton St. look
equally pink (purple in map) it is as if the few
really respectable from Martha St. etc had come
to live here

South down Sutton St. at the SW end was formerly the
primitive Methodist book store & chapel, all now
shut up. Lower down on the west side the Jews are in
the east side is poorer than the west esp. near
Cornwall St. 3 st. small shops, light blue to purple.

General Remarks. Notable decline in character of street
since last survey. Many ^{3 or 4} west-end ladies about
in 'East-End' clothes. Many women in the beer
house at the corner of Spencers St. & Watney St.

Dean St } N. ends pk
Sutton -- }
----- N of Rail's hur.

District covered.



Black & dark blue Streets

Prostitution

Feb. 3.

Dist 8

①②

S.H.D.

Walk with Inspector Drew round district bounded on the North by Commercial Road East, on the East by Watney St. Cable St. & Glamis Rd. on the South by High St. Shadwell & St. George's St. & on the West by Cannon Street Road. being part of the parishes of Christ's Church St. George in the East; St. George in the East & St. Peter's St. George in the East.

Starting at Winterton St. (late Devonshire St) 2nd St. rather narrow, smelly, stables S-E end, brothels, prostitutes & bullies, Jews coming in at North end, very poor. went into Planet St. (late Stac St) one or 2 brothels, several unfortunates besides who walk the Commercial Rd, some Jews but no prostitutes among the Jews (Drew only knows of one Jewish prostitute in the subdivision) Christchurch mission room on west side 'hardly touches anyone'. Some new whitish brick houses with polished yellow bricks making the door posts (i.e. those parts which become greasest & dirtiest in poor streets). a rather better St. than Winterton St. dark blue as map. at the bottom (South) on the

White's Gardens - db.

Morris St - lb.

Tillman St - purple

On S.W. side poor 2st. ho. lb. the purple of the map seems to have moved across the road into the newer ho.

Influx of Jews.

Comwall St.

the west side are White's Gardens. (see R in map) now dark blue windows broken, is like Planet St. west along the Commercial Road. south into Sturgeonford St. 2st. more prostitutes, un-swept street, cab yard at S.E. end. South end lately decay. broken windows. Dark blue as map. South through Lower Fenton St lb. ^{purple} down Morris St into 2st. #poor. rough. lb. rather than purple of map. west along Tait St 2 lb. ^{to dark blue mixed, rough.} as map. The dark blue spot shown N & South of Tait St between Tait & Morris St is down. The court also on the E of Mary St is boarded up North up Mary St ^{2+3st like Sheridan St} lb. poor. into Lower Chapmen St shops, nearly all Jews - west into Agra place which has an out let on the N side into Lower Fenton St lb. as map - all poor Jews. South down Tillman St late Ann St. 3st. ho. at SE end put up by the Chapman estate, get a respectable class, purple rather than lb. of map. along Tait St part Chapman Pl. poor, lb as map, flagged passage, doors open. clean. South down Anthony St 3+2st poor Jews. part the west end of Comwall St. not quite so bad as the east, some Jews, bread lying about street, some houses respectable, books wax flowers & fruits under glass

glass case in front windows, but others very poor, broken windows, holey blinds, black shiny door posts, 2 or 3 storied, many casters, character light to dark blue - map marks this end dark blue and the East end purple - South down Anthony St & East along Cable St. on South side of wh. is Prospect Place windows clean, only one broken, 16 coll. 2 st. 'but a rough place' light to dark blue. (lb. in map).

West along Cable St which looks better than map, 3 1/2 st houses, pink north & South side in appearance, map gives purple North side & lb. South. all exc. 2 ho. At the East of the Wesleyan Ch. up to Dellow St are down, the Board Sch now coming right up to Cable St.

North up Walburgh St very poor SW. end, 2 st rattle bars newish 3 st. tenements on S.E. side, the greater part of the West side of the St. is occupied by Seewards Stables (they are carriers in a large way of business) Walburgh Place on the side, 4 coll. spirit red tiled, purple. Goodhart Place. late York Plea poor, Jews, light blue - Little Ann St. the same - Jews up Anthony St into Lower Fenton St. 2 - purple to lb. not the

Cable St

Cable St - S. side pk

Jews

x

Lower Fenton St - purple

pink of map. Out of it on North side are Burro St
 & Fenton St. 3 & 2 st. very many Jews - Burro
 rather the better of the two - people as map.
 Into Commercial Rd. then South down Jane St. nearly
 all Jews on West side - purple not light blue the
 two black bits on the East & West side are joined
 wrong way up rsh. ran between the streets -
 not vicious, but very poor indeed, dark blue not black
 the passage into Richard St is known as Richard
Court. Richard St. also purple rather than lb. of map.
 3 & 2 st. all doors shut - the only lb. houses are two
 on the S.W. end. West side rather poorer than the
 East. whole St improves north of the beehouse. Jew.
 Into Commercial Rd. East to Little Turner St. this is a
 patch marked black & dark blue on map. is all
 much better now - Practically every family is Jewish.
 poor, foreign - boot ^{shoe} makers, many unable to talk
 English - children, booted, well-fed, fairly clean,
 majority hatless. East along Barrett St light blue
 not black into Kinder St also light blue. 2 st. home
 work - shoes & tailoring - water that ought to have
 flowed away lying in a large puddle owing to
 deficient

Jane St - pur.

Slight improvement

Block W. side - lb
 - E - - - db

Richard St pur.

Improvements in Little James St.

Little Turner St. - lb

Jews.

Barrett St - lb

Kinder St - dwellings - pur }
 rest lb }

Sly St - lb

Cannon St R^e - pink

Ratcliff Highway

Courts on the North side

Ratcliff St - pk

deficient street levelling, like it Sly St on South side of which are tall 4 storied buildings called Salters Bldg date 1893. purple in place of dark blue of map, all Jews, windows clean, unbroken. Into Cannon Street Road. well to do, 3 or 4 st, all Jews, some shops, much home work & small workshops. South of Cable St shops on both sides but E side not better than pink (red in map) & purple on West side - near two very old dilapidated looking houses on S. West side servants kept in some houses.

East along St Georges St formerly the notorious Ratcliff Highway. 'But its palmy days are over' many public houses, many beerhouses, many lodging houses of a low class, many courts, & remnants of old wooden London, are its characteristics. Its shops still redder of the sea. On the North side nearly opposite the end of Old gravel Lane is Harris Terr. 2 st. lb. as map. the next East ward is Russell Court. 2 st. flagged court. in good repair - clean - ragged boy. lb. as map. Ratcliff St the next leading into St George Ch yard - prop. 2 or 3 nearly at NE & SW. ends. purple to pink. North up Delon St.

Demolition of a black area.
Dellow St

Dellow St - pk

Albert St black.

Albert St lbb + black

W side Sage St - db lined
St of - - - db l²

Twine Court.

Twine Court - db.

not colored in map ->
Newton's Rents db

Dellow St great changes here, on the west side of the road is a Board school, which has taken the place of some black & blue hts, on the east side are tall 4st & attic, ~~etc.~~ buildings called Dellow & Bewley Bldgs. with an asphalt court between them. road broad clean - character of Bldgs purple - 'have got quite a diff class in them to those they turned out'. Between the E side of Bewley Bldgs & Albert St is open space, all houses down, pickled a new St to be called Lowood St not yet built on. Whybrows' pickle factory at Cable St end - Albert St is now built on both sides up to Cable St both sides black in character. 2 st. 3st in N.W. newer hts - women ragged, several frothels, children dirty ragged hatless, one only shoeless. Sage St the next Eastwards, houses on west side only stables on E, very poor, rough, unfortunates, children dirty, 4 cott called Jettles Bldg in a court on S.E. side not shown on map, dark blue. The next street westwards is Twine Court. at the old N.W. end of which is a court of 12. 1storic cottages with a pump in the middle of it with a tap called Newton's Rents - dark blue - very poor. Twine Court a tree in the court, children swiping over dustheap in the corner. chself

Rough Buildings in Shadwell High St.

Market B^{edge} - db

looks outwardly the poorest street I have seen; ^{2 storied} houses built 1887. in good outward repair, but windows broken, children ragged & barefooted, dirty ragged, all doors open, women dirty - women sackmakers the men neer-do-well - unadulterated poverty. Not so vicious as Albert St. Dark blue - Notice on houses '18 houses for sale, let to good tenants, bringing in gross rental of £512.4'

Has 3 gas lamps & a concrete pavement. The people There is an entry into Shadwell High St. out of South end of Tame Ct. ~~not shown in map~~. East along Shadwell High St. bet. Tame Ct. & Herces St. are a set of rough Buildings called Market Buildings, sitting on high St. & passage underneath the front leads to another set - 'very rough' - single rooms from 2/- per week, 2 rooms, 4/- past Herces St. 25th, pink as map.

Down King David Lane. pink as map. East along High Street Shadwell, there is a passage just east of Norris' warehouses (curriers) between them & Glamis Road, called Peel Alley. it is a cul de sac. (not open as in map) consisting of 4 2st. respectable houses. purple as map. then north up Glamis Rd. (or Labour in Vain Rd) on the West side is a ^{new}

narrow 'carriage way'; all stables: then Juniper St. a street of 4 storied industrial dwellings, dismal, ugly, dark unrelieved, flush with pavement, in a hollow, no colour built 1880. at S.W. end by the Carriage way a single 3 st. built 1845. with a yard to itself, quiet, pink. The rest purple, though dismal the street is respectable.

Changes due to demolition & rebuilding.

General Remarks.

The two great black spots have been removed from this area since our map was compiled. In the N.W. corner (Little James St) the betterment has been due chiefly to the ousting of the rough & vicious by a ^{fairer} Jews & also to the building of Dwellings (Salters Bldg) also tenanted by Jews. Kinder St. and Little James St. are still very poor but not worse than light blue (map depicts black) In the Dellow St. area there has been whole sale clearance followed by the building of High blocks of model dwellings under the LCC. The tenants of the new building are of the respectable labouring class. Albert St. still remains black.

The third black area in Winterton Street remains as it was. I was unable to say exactly where

^{of Dellow St}
the former inhabitants had gone. He has been too shot a time
in the subdivision. Nor is there any man who has been longer
in it than himself.

Judging by appearances along, it seems clear that old
Dellow St has moved into 1. the NW end of Albert
St (black) 2. Into Sage St now dark blue instead of
light blue 3. Into Cornth St now dark blue, built in 1883.
4) Others have crossed Cable Street & turned into Gale
Cort & Cornwall Street (purple in map) or into
Martha, Spence & Sheridan Streets (now dark blue
but formerly purple)

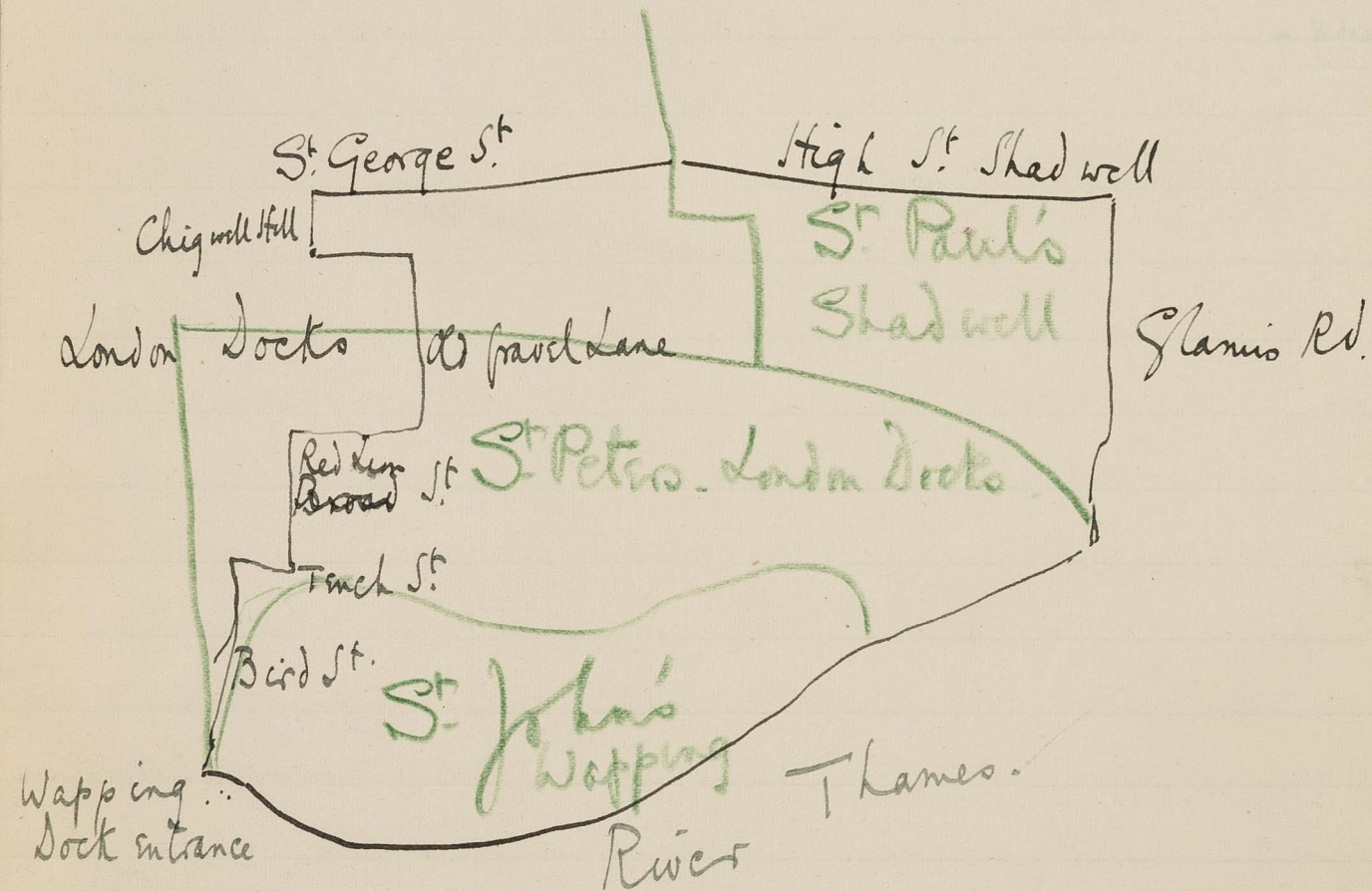
Thus Dellow St has become purple. In return it may be
that the purple inhabitants of Cornwall, Martha
Spence & Sheridan Streets have moved into the
Dellow St Buildings - in any case the character
of Dellow Bldg is purple & of Cornwall St etc
dark blue. Thus on the face of it there has been
merely a change about a general post: but it is
to be noted that black Dellow St in the course
of its move to Cornwall St becomes a shade
better a dark blue, so that the net result,
if the original supposition be correct, has been a

perhaps ~~of~~ little James St too

A general post resulting
in slight betterment.

a betterment. This betterment is the justification of
the LCC policy - nothing very great but still some-
-thing.

District covered.



Wapping

The whole corner by the ^{Moraga St. - pur} Bridge. N. side - formerly a Ct. is taken up by the Lond. Hy. & Drainic. Wks.

^{Sarah St. - pur}

Feb. 7th Monday.

Dist. 8 @ 2 G.H.D.

Walk with Inspector Drew round district bounded on the North by St. George St. & High St. Shadwell: on the East by Glamis Road: on the South by the River Thames: & on the West by Bird Street, Tench St., ^{Red Lion St.} Bird St., Old gravel lane & Chigwell Hill - being part of the parishes of St. John's Wapping, St. Peter's London Docks and St. Paul's Shadwell.

Starting at the South end of Glamis Road. West across the bridge of the Shadwell entrance to the London Docks. along Wapping Wall. 7 st. warehouses. St. Lukes Ct. on the north side dark blue & light blue in map is boarded up. North up Moraga St. (late Star St.) on map lt. some still poor but the rest purple. lightermen etc with brass plates on their doors. 2 storied - bad smells. West along the Mickyard. messy, vegetable ends, brick bats, old tins etc. a few h^{ouses} on S. side - rap. purple as map. South down New Gravel Lane. On the West side is Sarah St. a court not

Black spot in Wapping

Church schools

not coloured on map. 16 2st. cott. asphalt. ct. houses for 2 fam
2 rooms & washhouse downstairs & the same up. 11ft. footage.
East along Coleman St. 2st. poorer. purple to lb. clean. only one
house in Fox & Goose Yard at the SSE end. Back along Cole-
man St. to New gravel lane on west side of which is
an entry under arch into an unnamed open space
- the result of demolitions - leading to Whitehorn Place
dark blue on map. should be black - very rough - most
windows broken. cockney Irish - women sack makers.
3 boys bare foot - crisis of 'heres the School Board' & they
promptly disappeared - children dirty, ragged but well
fed. 3 storied houses - 'as bad & rough as anything in the
subdivision. north into Prusum St. 2 st. better -
purple to lb. north up Malay St. late Cold St. 2st.
cobble paved - some bread about purple - as map - into
Agatha R. the old schools are now a crèche St.
Agathas crèche 2^d per day. the schools now occupy
the whole of the triangular piece of ground whose
base is opposite the Workhouse - under Father
Wainwright who was crossing the st as we passed
in black cassock & 3 cornered cap - like those
worn by RC priests - S.W. down Regate St. - lb
as

Clegg St. rough.

Resp. Buildings

Rough streets

Hilliard St. - db

Clegg St. - db

Grocers St. - lb

as map. 2st. all doors open. windows clean. Some rough-uns - houses outwardly in good repair. into Hilliard Ct. rougher: at the corner of Clegg St. & Hilliard Ct. a very rough house. 3st. hardly a pane of glass left. dirty - dark blue. lb in map. Hilliard Ct. narrows as it approaches gravel lane but in spite of it houses get better. purple as map. entry to gravel lane under arch. East along Cinnamon St., no no. to ship St. along side of works. 2st. lb. to purple.

West along High St. & north into Brewhouse Lane. 5st. dwellings belonging to Improved Industrial Dwellg Co. Built 1862. resp. working class. purple to pink back into High St. then N along Queens Head Alley rough. noisy. l to dark blue. west into Redden St. 3 1/2 st. older houses with corinthian capitals to doorposts & panelled doors. built for a better class. lb. as map. court on west side with one house into Upper Well Alley. dark blue as map. very rough - a murder here 18 months ago. 3st. Grocers Ct. at N.E. end also dark blue. rough. 5, 2 st. cott. Into High St. westward, on N. side Church Ct. 1793. 2st

Recreation ground.

Lowder St rough.

Bird St - pur.

Green Bank - lb

Lowder St db

corner of Love Lane & Lowder St - lb

Watt St { N side pk
S side pur.

2nd ratt; some very poor: purple blt. North up Bird St
2 & 3 1/2 st, resp. improvement here prob. owing to demolition
of rookery behind & large playground & garden in
its place - purple - on map lb.

East along Tench St. High dock wall on N side, LCC
recreation ground on South. South down Red Lion St.
late Anchor & Hope alley - small shops - parts
rough, parts respectable - purple as map. at S. E
corner of recreation ground a gymnasium with
swings, see-saws, giant stride etc & covered pent
house with room at one end in which a matron
looks out at ^{the} chs.

East along Green Bank. poor, better towards gravel
lane - light blue rather than pink of map. N. up
gravel lane, into Love Lane - 4 st. Blk at corner
rough - dirty, messy, backs of houses; West into
Lowder St. late York Place - newly done up - 3 st. ho
very rough - children hatless but booted & well
fed - thieves, prostitutes - all doors open. at least
dark blue according to police account. North &
West to ^{Watt} Calvert St. late Calvert St. purple rather
than pink on the north side where was formerly a

Raymond St. lb

Red Lion St.

These houses are now closed.
S.E.A. ALB. S.H.D 28. XI. 90.

Worsement in Worcester St.

Worcester St. purple

Raines Mansions

Old Gravel Lane pk

a church & school are now 4 & 5-storied dwellings. respectable. with gravelled garden facing the road east into Raymond St. the south end rather rough 2 st. lb. rather than dark blue. a new casual ward takes up the whole of east side as far as ~~Watts~~ ^{down} ~~lane~~ ^{to} basefoot. girl - north end built 1853. North up meeting house alley. lb to purple at north end. Chandler St. better purple to pink. (map purple). Bat. - ock St. pink in map. has 4 very poor 2 st. houses on north side - rough. dark blue down said on north - purple on south - North up Red Lion St. (late Broad St.) map - purple to pink. Taylor's Rents on the east side - dark blue as map - sack maker working at home - very poor but clean - tap in court - entered under arch way.

East along Worcester St. purple rather than pink. 2 houses at east end poor lb. broken windows. Worcester Ct. on south side, old wooden houses lb. as map. South down old gravel lane. on the east side are a long block of 4 storied red brick mansions called Raines' mansions - pink in character. better class have moved into them - (this

Rycroft Court db

The Bridges of Sighs.

Starch Yard purple

Pennington St.

Houses on N.E. Gravel Lane lb

may account for apparent worsening in Bostock, & Worcester St. & Green bank). The dark blue bit at N. end has disappeared in consequence of the mansions. On the west side of gravel lane just north of Bostock St. is Rycroft Court. very rough. 6 cott. not coloured on map. barefooted child - windows broken.

North up Gravel Lane across bridge separating the East from the West basin of the London Dock. This & the other bridge in New Gravel Lane are called the Bridge of Sighs because of the numbers of suicides - a policeman is now stationed there between 3 PM & 7 AM each day as a preventive. 'There has been a lull in the number the last 2 years but they (suicides) used to be very frequent.'

at the N.E. end is Starch Yd. not coloured on map 3 st. h. one fair but one very poor. lb. On the N.E. side of Gravel Lane the map marks the houses black. Dow said they were only poor. lb rather than black. West along Pennington St. old houses, overhanging red tile roofs with ornamental eaves. in map dark blue barred black.

Courts South of S. Georges Rd.

Chigwell Hill lb

Star & Garter Yard - black

West Gardens purple

Elbow Lane purple

Religious forces.

No regular brothels. not notorious in any way. rather rough - perhaps a few unfortunates. The first court on the North side between Chigwell Hill and gravel lane has some rough characters & prostitutes; called Lavender ^{Place} Court - Chigwell Hill - poor. rough. dark blue. working class. 'better than Whitehorn Place'. East along St. George Pl. at the corner of gravel lane is Star & Garter Yard on the South side - the vestry stone yard has an. crached on the east side of it, some h. pulled down but still rough & vicious, in the stone yard itself remain 2 or 3 storied shanties still inhabited.

East along West Gardens. 4 st. Buildings - quiet purple. along to Elbow Lane. more h. with Duke's Court. at the extreme east leading up steps into the Hill St. old fashioned, wooden houses. only one h. proper. -ly in Duke Court.

General Remarks.

The strongest religious forces in Wapping according to Drew are Father Wainwright & Peter Thompson. Father W. has taken off his coat in the street to clothe a beggar. The Congregational chapel has not much

Industries of Wapping

Workers from Deptford.

Most respectable in Buildings

Irish.

Public Houses.

much hold. The industries are Dockwork & general water side labour. Soap workers. Gas workers. & for women sack making. Much drink among the gas workers. A good number of casuals - poor class. Looking waiting for jobs at street corners.

More are employed in the district than live in it. Those who come from outside come from Deptford across the river & not from Shadwell.

Wapping is peculiar in that the best of its inhabitants have gone to live in the Buildings rather than in the small houses. The only rough block of Bldgs being those at the corner of Fovel Lane & York ^{place} ~~place~~. Lower St.

No Jews. Some cockney Irish. Streets cobble paved. good deal of mess about esp in the milk yard wh. shd be cleared away.

Many women in the public houses esp in that at N end of Raymond St. The number of Friendly leads & Sing songs announced in their windows also remarkable. ^{houses} Houses for the most part small.

CP (2)

G. H. J.

Feb. 9. 98.

Interview with Inspectors Drew (Arbours. Square. subdivision) & Inspector Derby (Shadwell. subdivision) to check the licensed houses in their respective subdivisions.

Wapping.

Wapping they spoke of a quiet shut off place which obtained its roughest labour from Deptford. In consequence the streets are quiet even deserted after 6 P.M. The poor rough quarters in Wapping are Whitehorn Pl & Upper Well St, Powder St & the Bluffs at the corner of Love Lane. These are very poor & very rough & dangerous places for policemen; to be compared to Donkey Row. [on the mantel piece of the police sta. was the battered helmet of a policeman who had been attacked last Saturday in Donkey^{row}, helmet pulpy & straps wrenched off it, strap also wrenched from the handle of his truncheon] They agreed that the 'Buildings' in Wapping with the exc of those at the corner of Love Lane had taken off the best of the house population.

No houses as far as they knew shut before closing time. Women go into all houses though some are more particularly favoured than others. If they have the money they drink spirits rather than beer. The effect of closing houses at 10 in Wapping wd be to send men home. There might be less drunkenness as a consequence but they did not attach much importance to it. The houses are such very small dark places in Wapping: men want the light & warmth quite as much as the beer. As a general thing they agreed that drinking merely for drinking sake takes place ~~after~~ between 6 & 12.

They deplored the fact that the East End was becoming Jewish. Said that English men were rougher but the Jew more tricky, quoting Judge Montagu Williams 'a Jew never tells the truth except by mistake'. Indless trouble caused by accusations & counteraccusations. Two widows cleaners one a Jew & the other an English man recently came to the station. Each had knocked the other down. The Jew to make his case stronger pulled his own watch chain to pieces on the road & accused the other man of attempting to steal his watch pointing to the broken

The Jews.

broken chain as evidence. Unfortunately he had been seen breaking his chain, evidence also was given that before starting for the station he had handed his watch to his servant. As to changes in the workingman Drew in his 25 year service has not noted any except that holidays are more indulged in than they used to be. He is every bit as rough now as ever he was.

The Lovat Arms. Bardett Road.

Character of neighbourhood.

Feb. 11

(10) ^{Muscell} 10.11.12
289 CP G.H.D.

Interview with Mr. F. Friend. Publican. Owner of the Lovat Arms. Public House. in the Bardett Rd. at the corner of Thomas St. is just north of the canal bridge. on an introduction from Mr. Reeve - Manager of Truman, Stanbury & Buxtons.

Mr. Friend is tall dark, strong looking, about 45 years of age. His Father took this same house in 1862. On the Father's death ^{in 1879} his mother carried it on with him as manager until 1891. Then she died & he has carried it on since.

The neighbourhood is working class & lower middle & middle class. The mainstay of his business in the winter is the jug trade. There is also a regular set from the Whitehead works opposite, & from Thomas St. Gold & Silver re-finery that make use of his house. In
Sum.

Children.

the proportion of passing trade is much greater -
Burdett Rd. then becomes crowded with those going
up to the G. R. railway station to go to
Southend etc, with those going for an airing
in Victoria Park, & with those in trunks
bound for Epping forest. In winter it is a
deserted road.

Children come in great numbers for the dinner &
supper beer, sent by their parents: children of
all classes. "Even quite well-to-do parents will
send their children for beer which does not
look as if they feared the contamination of
the Public House." Language is not so bad in
the Public as in the street though at times
it may be, often not so bad as in their own
homes. When a man is talking loud & a
child comes in he hurries it off. "But it does
not pay in a large house to allow noisy
customers in, they drive away more than they
bring." Thinks that the best proof of the
little harm children can come by is the fact
that parents who might send a servant often
send

Hours of opening

Payments to police

sent a child. He never remembers having seen a child drunk. Does not think there is much in the complaint against ch. being sent.

He opens at 7.30 am. One house higher opens at 5 & another lower down at 6. The time of opening depends on the situation. Thinks that more harm is done by early opening than by late closing. Says that the early rum & hot coffee or rum & hot milk is apt to keep a man away from work altogether, in any case to make him lazy. At present licensed houses must be shut between 12 & 5, thinks that the hour of opening might be extended.

He pays the police regularly 1/- per week to the man on the beat. Thinks that all the houses in the neighbourhood whether beer or public pay the same. "It's not quite our fault that we pay them, they practically insist on it" said it was worth being on the right side of the policeman for he can prevent you getting into trouble in several ways. For instance a policeman who is friendly will tell you a

a man shd not be served when he has seen him
 come reeling down the street. You wd probably
 have served the man without noticing any
 thing wrong for they ^{as they} have a way of bracing them
 selves up & in a crowd it is difficult to be
 sure about their state. If the police is not frank
 he lets the man come in & then serves a
 summons on you as soon as the man comes
 out. He said there was not much abuse of
 this sort because the magistrates were
 severe on policemen who had not a really
 strong case, but it might be done - again
 when there's a row & you want a policeman
 he is 'looking the other way', if you ^{hard} ~~do not~~
 given him something. He thought the shilling
 was well spent. What he did object to
 was the general notion of all public servants
 that they had a right to free drinks from the
 publican - about every month the postmen ex-
 pect something; when the road sweepers pass
 they want a drink & are offended if you
 refuse. They dont go to other shopkeepers but
 seem

Public servants & publicans.

Pot men.

Effect of increasing or decreasing
the number of licensed houses

seem to think the publican is fair game.
He said the class of men who become publicans
was higher now than formerly & the abuses
less than they used to be: - for instance it is
not now the general custom to give beer to
the police.

He employs 2 barmen & a housekeeper who has
been with them since 1862. Barmen seldom
rise to be publicans tho' they have more of
a chance now than formerly because of the
growth of brewery ownership of public houses
and the manager system. He objected to
the manager system because he thought there
was a much greater temptation to push the
sale of drinks when you were a manager than
when you were owner & had a personal reputa-
tion to maintain.

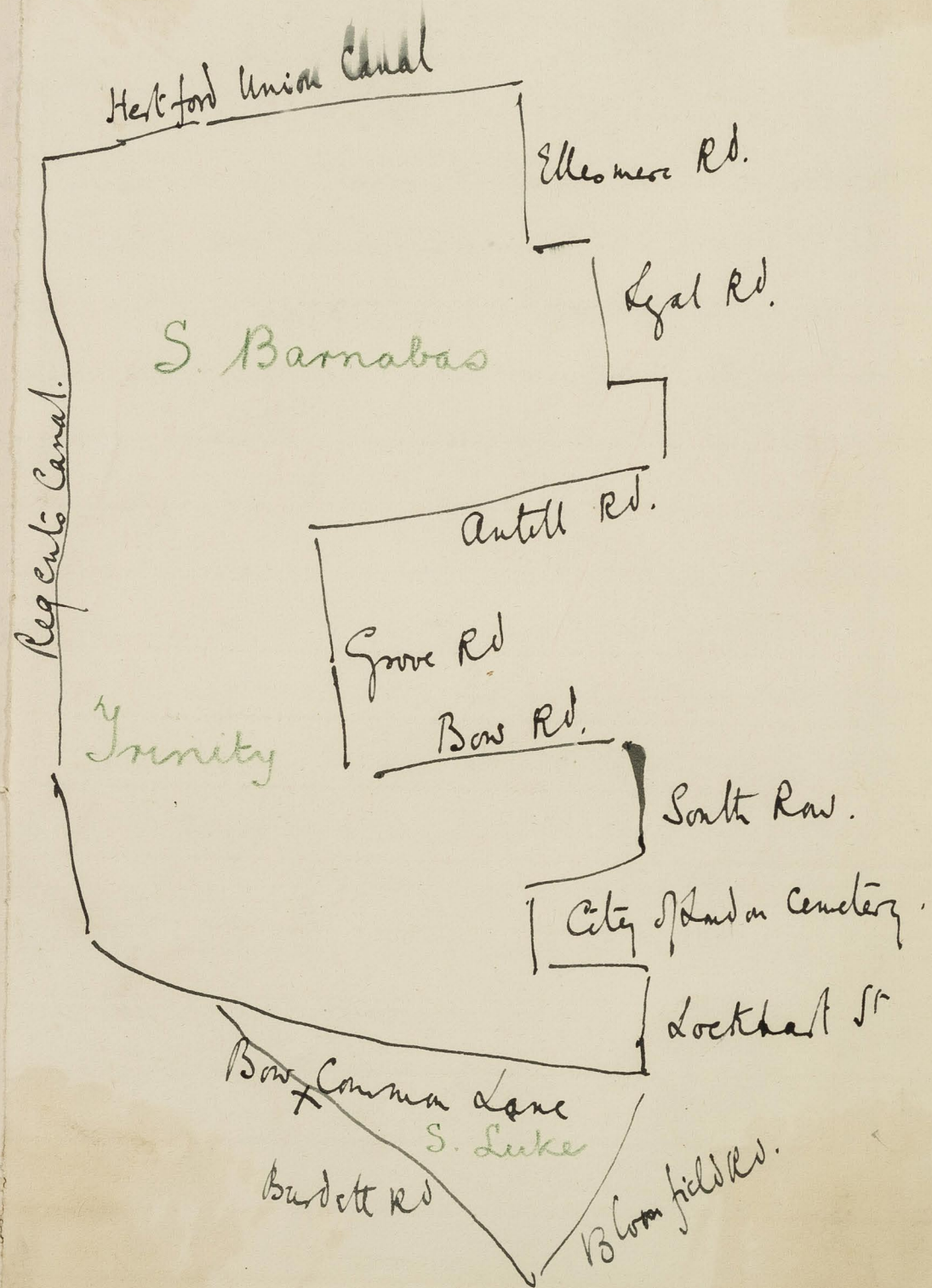
He does not believe drinking wd be increased by
the increase in the number of existing houses
but it wd decrease the value of present holding.
In the same way he did not think that a
decrease in the number wd affect the amount
drank

Singing

245
Beer houses are rather more noisy than Publics & ap-
-pear generally to a lower class. For instance musicians
are allowed to come in & play in the bar &
songs are sung. He will not allow this ^{generally} because of
the annoyance to others: but on a Saturday evening
he lets those who want to sing go into a special
room at the back & drink & sing there.
'I'm fond of a song myself & don't see why they
should not be allowed it sometimes'.

He will be glad to give any further information wanted

District covered.



Jan 20. 1899.

Dist 10

G. H. D.

Round district bounded on the North by the Hertford Union Canal: on the E by Ellesmere Rd, Lyal Rd, Antill Rd, Grove Rd, Bow Rd, South Row, City of London Cemetery, & Dockhall St: on the South by the Bow Common Lane & on the West by the Regent's canal.

Starting at the Corner of Alma & Burdett Rd. E to Alma Rd. 2st. some comfortable others poor: lb
 lb in map lb. South to

Sailsbury. 2st. better. fair proportion of pink -
 lb purple lb. in map lb. S down

lb W. Lion St 2st lb lb in map lb. W to

lb Bezzally St. 2st. purple in map lb. W to

pk Burdett Rd. - no lb Maps c.

purp Canal Rd. - all purple. mixed. in map un-

- marked & pink. E along c.

purp Maidman. 2st. unmarked to purple South

file
file
file
file
b

Venour Street - pk

3
2

Down ↘

pk Quings 2st unmarked bpk. W along.

pk Forster Rd unmarked bpk N up

Quings 2st. unmarked bpk. W then S

John Canal Rd turning E at ↘

Bridge St 2st. purple bpk. narrower. i

purp. map pk. South down ↘

Single St houses on E side only except at

NW end. purple bpk in map pink. E

along Bridge St N up ↘

Edwards Rd 2 1/2. some pk. others very poor. There

are houses on the SW side below Chapel rd

shown in map. lb to purple. in map lb. E to ↘

Brantbridge St 2 1/2 st. very poor. windows

broken, stuffed with rags, lity. 'used by

all the girls who walk the Whitechapel

road'. lb to lb in map lb. W then

Map Maplin St 2 1/2. mixed. purple on map. E along

Bow Rd & South down ↘
South

pk
pk
pk
pk
pk
pk

3 7

S Down.

South Row. Grove Bldg at N end on W side
 Bldgs are db } db both not shown on map: S Grove is
 all poor, lb all through rather than
 S. Grove } purple of map. no pk at South end.
 lb } South part is

Cordelia St. 2st. lb to purple in map lb. 3
Salmen St. poorer. windows bad. lb as map

W. along Carter St. 2st. lb as map. S Down

Albion St. lb both sides in map unmarked
 purple } pk. West part is

Maplin St. lb as map. South Down

pk Eric St. which is the southern continuation
 of Brantbridge St. pk - unmarked in map.

Massford Rd. runs into it on the W side &
 pk is a continuation of Edwards Rd. pk -
 unmarked in map. South into

Rogers St pk - unmarked in map. School
 N & factories take up part of both N
 pk } South sides in the centre - unmarked in
 map - Out of the South side are
 Martin

S Down.

m
 cent
 nes
 St.
 ne
 8th
 re
 te
 ple
 ple
 ple
 ple
 &
 b

4 7

Maritime St. pk.

Lockhart St. east of Maritime St. also pink - neither are shown on map. They are in place of the 'London Maritime Institution' shown on map. N up Bow Common Lane 1/2 across miles end Rd. to

Whitman Rd. purple in map lb. N up Belay St. Longfellow. late Whitman Rd. 2nd St. lb as map. E then N up

Jupp Rd. poor very poor. lb both in map lb. E then N up

Chalm Rd. N. end. 2nd St. pk in map purple. to Ashcroft Rd. 2nd St. pk as map. N up Grove Road & west at

Barnside Rd. 2nd St. walls rotted. Some windows broken. purple both in map pk.

N to Belhaven St. pk as map N to Cordova St. purple as map. There is no communication between the west end of Cordova & Belhaven Street as shown in map

pk
pk
pk
pk
pk

Idon

map. N to C. 5. m

Hamilton Rd. purple as map. The road takes a turn North at the west end. on the E side of this turn is a factory & two inhabited cottages N of the factory. The E side of the next westerly turn is not shown in map. N to Palm St. 2 st. purple both. in map lb. on N side of its north side run.

Lessada St. 2 st. same up poor. lb as map

Dotty St. 2 st. lb as map. N across the Roman Rd. to

Ashwell Rd. } 2 st. both better than

Gardener Rd. } 2 st. both better than

Lessada & Dotty St. purple in map lb.

St. Wennington Rd. 2 st. purple as map.

E. across Grove Rd. to C.

Kentworth Rd. 2 1/2 st. purple as map. N. to

Chichele Rd. houses all along the N side.

more purple: otherwise as map. I don't

Illmes Rd. pl as map. built 1864. N

Auckland Rd _____

Idon

the
the
the
the
the

S. Don Vivian Rd. 2nd st. purple to pk. in map. purple to
 Dep. across Roman Rd. S. Don Conger St.
Conger St. 2nd st. purple: in map pk. Early cont
Olga St. 2nd st. purple _____ to
Medway Rd. 2nd st. pk as map. N. W. E
Burgoyne Rd. pk to purple: in map pk. 2nd st.
 W. to Lawrence Rd. pk to purple: in map pk
 W. to Gannon. _____
 S. to Thyden Rd. pk as map
 S. Don Grove Rd. & East at _____
Medhurst. unmarked to pk. S. into
Arbery Rd. 2nd st. pk. unmarked in map.
 S. to Strahan Rd. unmarked to pk.
 S. to Antell Rd. 2nd st. pk as map.
 E. to Legal Rd. 2nd st. pk as map. across
Stanfield Rd. houses at west end in South
 side only. pk. unmarked in map. E.
 S. Don Selwyn Rd. 2nd st. pk as map

General Remarks. Note the betterment in
 the

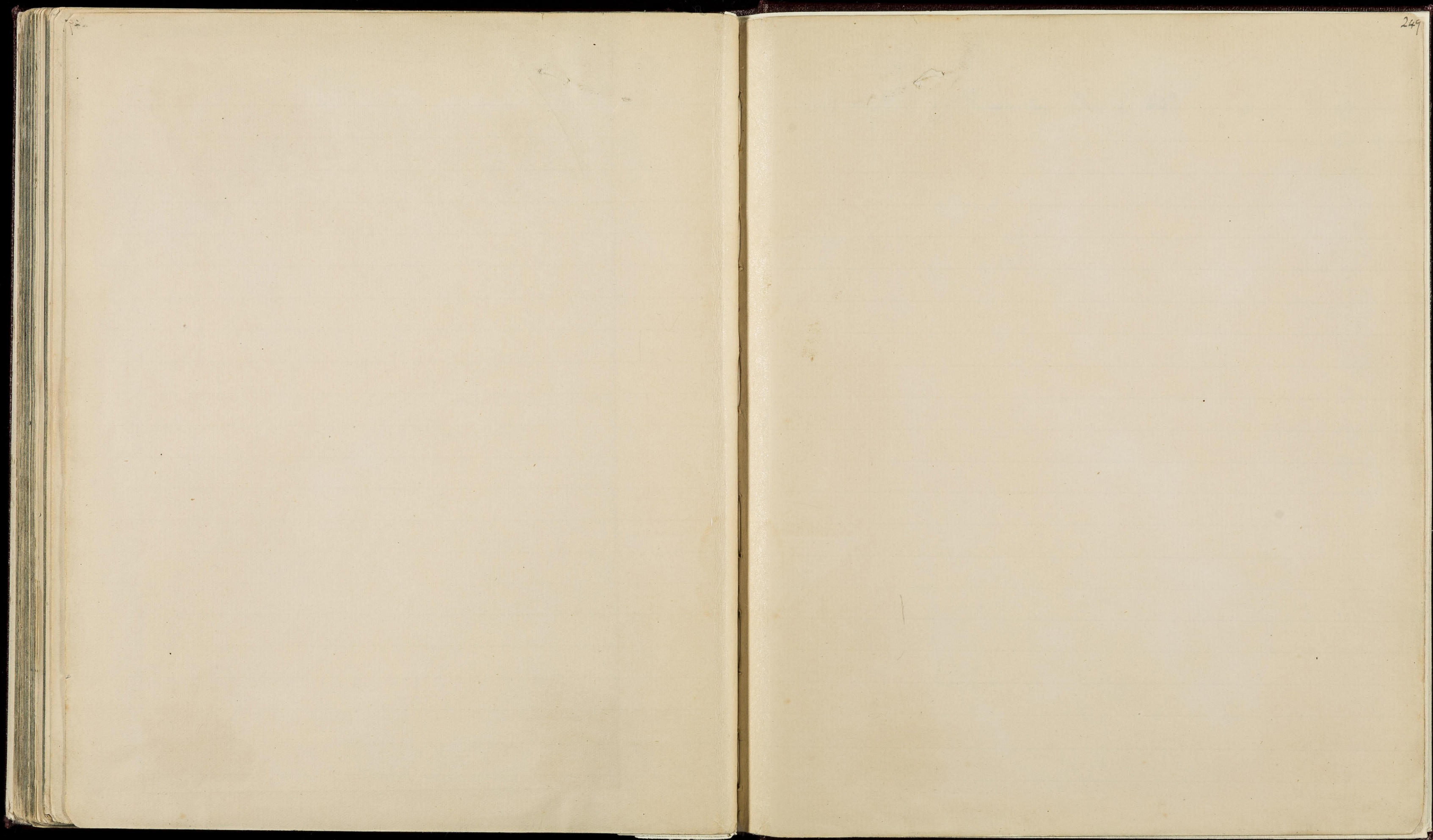
7
 6. m
 h
 cont
 mer
 St.
 me
 8th
 re
 the
 rple
 rple
 rple
 rple
 b
 2b

the dark blue patch South of Bow Common Lane. & in Edwards St. Against this there is wearment in South Row though not sufficient to account for the displacement of all the former dark blue.

Brantbridge St is the worst of the lot to the room here the women who walk the Mile End road bring home their men.

North of the Great Eastern Railway, North of Bow Common Lane there are a number of new streets which have tended to suck the pink out of the surrounding streets - but not very markedly.

Additional	From	To
Woodside Road	lb	purple
Copperfield Road	ph	purple
S. Ann's Road	lb	purple
S. Dunstan's Road	lb	purple
Kirk's Place	db	lb
Georgina Place	db	lb



22. a. 3. penonah +

Look up set of Causeway Ct. p. 165. J.

