

F 268

Hammersmith

Nonconformists

District

Books

30

C

PARTICULARS FOR ORDERING A
REPETITION OF THIS BOOK.

No. 16079

ROBINSON, PICKERING & HUNT,
9 & 10, ST. DUNSTON'S HILL, E.C.



M 420
R COLL U B 268

[i]

District 30

Name	Church	Address Where seen	Page
Benskin	Rev. F. G. West End Bapt. King St	50 Bath R ^d Bedford Pk.	1
Adams	Rev. J. Oaklands Congregation	19 Boscombe Rd. Shep Bush	17 ✓
Brown	Rev. W. J. Riverscourt West ⁿ Church	9 Ravenscourt Park, W.	35
Monti	Rev. F. B. Mebridge R ^d Bapt. Tabernacle	Letter &c.	45 ✓ and 129 ✓
Cullum	Rev. W. West ⁿ West Kens. Park	47 Shepherds Bush Green	47
Shrewsbury	Rev. A. R. Albion Cong ^l Dalling R ^d	44 Homefield R ^d Chiswick	55
Stanger	Rev. Geo. Prim. Meth. Dalling Road	Aubrey Villa, Shaftesbury R ^d	65
Bonway	Rev. J. Presby ⁿ Goldhawk Road	1 Ravenscourt Square, W	75
Pope	Rev. G. W. Baptist, Shepherds Bush Tabernacle	167 Holland Road	83 ✓
Borough	M ^r F. S.M. Mansion House St	144 Sffley Road, Hammersmith	99
Shepherd	Rev. R. B. Wesleyan, Askew Road	12, Rylett Road, Shep. Bush	111
		Hammersmith Y.M.C.A. 11, The Grove	127
White	Rev. J. R.C. Brook Green	Presbytery, Brook Green	139

[ii]

Rev. Fred. G. Benskin B.A.

Baptist Minister

The neighbourhood

Buildings used

Persons Employed

Services Held

GA

May 16/99

St. Peter's parish

30
9

30
2

Rev. Fred. G. Benskin B.A. Minister of West End Baptist Church, King Street, Hammersmith. Residence: 50 Bath Road, Bedford Park, W.

Mr Benskin is a well dressed, fair young man, mustache, stand up collar, light tie - Not the least suggestion of the minister in dress or manner. Looks about 22 but is probably older (26). Was settled here in 1897.

He describes the district briefly as slums south of King Street, another poor patch north of Glenthorne Road, whilst Ravenscroft Park is good middle class.

The Church has a fine block of buildings, extending some a great depth from the street. Church holds 850, school room (400), small hall (120) and 7 or 8 class rooms.

Minister and deacons paid. At least 80 to 100 voluntary workers or more. Includes deacons, 52 S. S. teachers, open air workers etc.

Services. Sunday 11 am 7. Congregation about 400 in morning and 700 to 800 at night. Morning people are good class middle class, tradesmen and

business

Benskin - Baptist

business men. Many come twice a day. In the evening get more working class people.

Sunday school. About 540 children on books. Growing steadily. Average attendance kept is head master of a Board school. Except in the Bible classes, they do not get the children of the well to do. Two Bible classes for servants and elder & girls. Obligated to recognise the distinctions as the young women will not associate with servants.

Open air meetings are held in the main street & also in the other streets. Two every Sunday.

During the week one or more meetings are held every day. Christian Endeavour 60 to 70 members. Temperance Meeting, which from May to October is held in the open air - opposite the Ravenscourt Arms. Get good meetings especially in the open air. The P.S.A's are growing. Men's has a membership of 312 & attendance of about 450 - respectable working men. Women's conducted by deaconess. About 100. Mostly wives of the men.

Have a number of clubs: gymnastic, athletic, football, swimming & social. The Y.W.C.A. also meets in their rooms and its workers are mostly their members.

WEST END BAPTIST CHURCH,
KING STREET, W.
Pastor: Rev. FRED. G. BENSKIN, B.A.
Sunday. Public Worship 11 a.m. and 7 p.m.;
Prayer and Praise 10 a.m. and 6.15 p.m.; Sunday
School 10 a.m. and 2.45 p.m.; Bible Classes for
Young Men and Young Women 3 p.m.; P.S.A. for
Men 3.30 p.m.; Women's Own 3.30 p.m. Ordinance
of the Lord's Supper is observed on the First Sunday
Evening and the Third Sunday Morning in each
month, after Service.
Monday.—Mothers' Meeting 2.45 p.m.; Band of
Hope 7 p.m.; Y.W.C.A. Social Meeting 8 p.m.;
Senior Band of Hope 8 p.m.
Tuesday.—Young Women's Prayer Meeting 8 p.m.
Wednesday.—Y.P.S.C.E. 8 p.m.; Y.W.C.A. Bible
Class 8 p.m.
Thursday.—Public Service 8 p.m.
Friday.—Young Men's Society 8 p.m.

Social Agencies

Visitation

Charitable Relief

C.O.S.

Church Membership

Benskin - Baptist

Mrs B. visits sick cases & when reported to him but attempts no general visitation. The deaconess, who is a trained nurse visits the sick poor, surgical cases. She was trained at Doughty Street. Members are grouped in districts and absentees visited by deacons.

Have a 'Bread & Coal fund' which also gives meat, milk &c to sick cases. Most of its work being done from November to April. Committee visits the cases. Also gives pensions to poor members from the Communion Fund which is about £100 a year. In all about £150. P.S.A. also has a "Helping Hand Fund". Beside these public efforts a good deal is done privately - a few members will guarantee a sum for some special purpose.

Never come across the C.O.S. nor do they go the C.O.S. come to them.

Membership is about 310. Church is growing. Church was pretty well empty and they have been "going up the hill". The movement amongst the people is westward. Some go to get better houses; others considerations of work cause removal. Their people come mostly from the west, some from Chiswick and Acton.

Religious Agencies

Co-operation

Free Church Council

Benskin Baptist

The Church of England clergy are not very vigorous. St Peter's is 'empty and dead'

Lockharts have a Mission Hall, which is active. There are also several City Missionaries, with mission halls. Their work fluctuates according to the character of the missionary. Some of them have queer notions. One dissolved his Band of Hope. Wesleyans & Congregationalists (Albion) have difficulty in maintaining their position whilst the churches at the east end of the district have even greater difficulties, owing to the movement of the best people and the best shops to the western part of the district. A strong socialist element.

No co-operation with the Church of England.

The Free Church Council (Hammersmith) of which he is secretary, is not very successful, owing to the sharp division of the districts. They exchange pulpits on the first Sunday in the year, but in other work the churches north of the railway do not combine. Four churches on the south have combined to issue a local magazine of which they distribute 3000 copies. These are Albion Congregational, Rivercourt Wesleyan, Primitive Methodist, Dalling Road & the Baptist.

Hammersmith :: and :: District

FREE

CHURCHMAN.

UNDER THE AUSPICES OF

ALBION, BEULAH, RIVERCOURT, AND WEST END CHURCHES.

APRIL, 1899.

Local Government

Police

Drunk

Prostitution

Thrift

The recent separation from Fulham is landing them in large expenditure and Mrs B. does not think there was a crying necessity for the division. Hammersmith is ruled by the moderates. The Vestry is inert. Streets are not so well looked after.

Police do fairly well altho' not very vigilant. Drink flourishing judging by the enlargements & rebuilding. During the past 18 months 10 publichouses on the highway from Broadway to Chiswick have been enlarged.

Prostitutes in Goldhawk Road & King Street.

Taken as a whole the working people are thrifty.

Housing

Benskin - Baptist

A large number of houses are let in flats. Streets of houses that formerly let at £50 are now divided into two sets of rooms and let at £30 inclusive. There has been a great influx to Hammersmith and rents are rising as houses are scarce.

The prospects, Mr B regards as extremely good. New people are coming into the borough. Trade is fair & increasing. In the church they are always seeing fresh faces.

Mr Benskin is an able young man, bright hopeful and enthusiastic, and he represents the ardent spirits who are expecting better days.

Dissatisfaction with existing abuses and anomalies has long existed but ~~in~~ Mr B is not dismayed by these things ~~but~~ believing that the church can right them, ~~and~~ This hopeful spirit is spreading and we may expect that these people will be a growing force. The first page of the local Free Churchman in January, (which by its style I think is Mr B's work) voices these aspirations.

FREE CHURCHMAN

Our New Year's Work.

THE New Year has dawned with great opportunities for the Free Churches in Hammersmith. The constant increase of population, partly caused by new means of communication and partly in the ordinary course, creates fresh demands upon us and calls for the formation of Look Out Committees in every Free Church parish. Tradesmen are quick in finding out the wants of new comers, and Christian work demands the same keen insight if it is to be successful. Ordinary business methods brought to bear on a good deal of Church organisation would transform many Churches from drone houses into busy bee-hives. We ought to see that new comers do not join the great army of non-church-goers with which London is so much filled. This seems to be true Missionary work though not so fascinating as that work which appears from a distant view. To be the indirect means of converting a heathen Chinese in Chefoo, is in the eyes of some good folk much more important than direct work in dealing with a dweller in the slums of our own city, but both are equally dear to God, and duty requires that our Christian work should begin at home. Christ dealt with the individual. It is the forgetfulness or the failure to practically recognise this fact that hinders much Church success which could be reaped. A crowded Church is deemed by many men a mark of success, but successful work needs to be done, and is often accomplished, in quiet ways by zealous workers dealing with individual souls. An instance of this was given recently in Hammersmith, a good brother was surprised to find some young people who had listened to hundreds of sermons explain in conversation that they were expecting God to do something miraculous for them when they become Christians. It is just as absurd in the eyes of reasonable Christian men, for the effect of any Free Church teaching upon the mind to form the belief that conversion is only attained by Miracle, as it is for the Romanist to teach that the Priest transforms bread and wine into flesh and blood. The people outside the Churches hunger and thirst after the Gospel, and if put before them in simple English, readily accept it. Like ourselves they love the Bible. Our clear duty is to maintain an Open Bible as one of the symbols as well as the foundation of our faith. Priests may desire its withdrawal, or that it should only be read under the interpretation of their Church, but the times demand that

it should be made the study "temper, brain, and nerve" of the people to keep them true to God, their souls, and men, and upheld as a symbol of religious freedom and liberty of conscience. In April next we celebrate the birthday of Oliver Cromwell and yet many Englishmen have grudged Free Churchmen the knowledge of their hero. We live in days when our children are taught to praise Charles the 1st and to treat with scorn the man who brought the principle of religious liberty from the region of abstract speculation into the field of practical politics. We have to resist spiritual tyranny in high places, and one of the means of doing it is to put before the youth of our land the spirit the deeds and the effect of the life of Oliver Cromwell. There are also Social demands upon us. Hundreds are living in a state of poverty and wretchedness which could be obviated if local authorities had larger powers, and proper provision was made for housing the working classes.

An Embankment in Hammersmith has been dreamed of for some years, and would be a great boon if at the same time it led to a scheme like the Boundary Street scheme of the London County Council; another bridge and the opening up of the uncovered land in Barnes for dwelling houses. Other parts of London are being improved, large sums are being spent on military and other affairs but while the people of Hammersmith are supine nothing will be done. The conscience of the people must be aroused to this work, and religious men must do it. There are also duties in regard to the promotion of Temperance which lie close at our doors. The scores of drinking facilities in our midst are a disgrace to the Borough. There is very little if any Temperance sentiment outside the Churches in Hammersmith, and Jas. Livesey's prophecy that if Temperance work were made part of Church work it would get into a groove and not be nearly so influential or effective, is fast becoming true. We want to rouse ourselves to action and to combine with all men who will do their best to slay the tide of drunkenness and immorality which abounds through the drink traffic. The liquor sellers are entrenching themselves in splendid houses, and surrounded by great wealth against the home happiness of the community. Their power must be limited in the interests of the State. To promote the spiritual, social and general well-being of men is our great duty in this year. Let us Organise! Organise! Organise! to do it. Let us go forward, though we may have to pass through misrepresentation and derision and let us try to wake into quicker movement the pulse of an ancient Borough.

West End Baptist Chapel.

"Look not mournfully into the Past. It comes not back again. Wisely improve the Present; it is thine. Go forth to meet the shadowy future without fear, and with a manly heart."—*Longfellow's Hyperion.*

Looking back into the past, we see much that might have been different, we have not always taken opportunity by the forelock, but the present is ours to do with as we will, let us then make the best possible use of it, and take for our motto the old saying, "Doe ye nexte thyng," that during this new year upon which we have just entered, there may be much attempted and much done; the chief end always being the enlargement of the kingdom of Heaven.

It is said, that if you take hold of a nettle firmly, it will not sting you, but if you are afraid to take a firm hold, you are sure to suffer. We are certain to meet difficulties in our work, let us treat them as we should the nettle, fearlessly grasp and overcome them by so doing.

Remembering our Church motto for the year 1899, let us seek to make this New Year one of urgent definite prayer. Too often our prayers are indefinite, they should be particular and pointed. The acceptable prayer with God is Prayer in the Holy Ghost. What a rich blessing there would be, if we could always pray in Him! Although we recognise in some measure the greatness of our need, His ministry is required to stimulate that sense of need, and to teach us to ask for right things. He will show us what things we may ask for that are in accordance with the will of God, for it is our one desire to live in conformity with that Blessed will always obeying God. Our petitions will not be so paltry or selfish if they are inspired by The Spirit, we shall rise even to the height of Intercessors. The source of blessing is unchanged, God waits to be gracious, and He will continue to visit us with His mercy. He who has been with us will still be with us, and this God of love is our God even unto the end. Let us seek for the blessing of the Holy Spirit, that we may be filled with His Grace.

We should be glad to welcome friends at any of the services in connection with our Church. If there are any friends who seek a spiritual home, and would like to find that home with us, they will be heartily and lovingly received.

Primitive Methodist Church.

DALLING ROAD.

We wish for all our readers a very Happy and Prosperous New Year

As a Church, God has blessed us. The various departments of our work are healthy. The Mission in November last, has resulted in the quickening of our Church life, and the conversion of some of our Sunday School Scholars

This is God's answer to prayer, and His reward to patient and faithful labour.

We thank God for the conversion of any person, but the salvation of the young gives us peculiar joy.

They are not only saved from a life of sin, but their life is more possible for Christian service and influence than that of those who may be saved "late in life."

Our work for 1899 will demand much attention.

The various interests of the Sunday School, Band of Hope, Young People's Meetings, Class Meetings, Bible Class, Sewing Meetings, and Mission Services, will call for the united devotion of all our members and officials.

The years blessings and success will depend largely upon ourselves. What is it to be?

Answer—More faith, more work, more love, more self-sacrifice, and more of Christ.

To all our workers we say.—"Work for the night cometh when no man can work."

To those outside we say, "Come with us and we will do you good, for the Lord hath spoken good concerning us."

"LOVE—SERVE."

Hammersmith and District Prayer Union.

During the past week (January 1st to 8th) we have held special meetings for Praise and Prayer in our various Churches. Although so far as our Hammersmith District proper was concerned the attendance at our gatherings was not so large as last year (a matter we deeply regret, as, with one or two exceptions, the weather was quite fine) there was a spirit of true worship manifested. The subjects which engaged us were the following:—

The Deepening of our Spiritual life.

The Sanctifying of our Home life.

The Quickening of our Church life.

The Purifying of our Social life.

And the Evangelizing of the Heathen World.

On Friday evening we met in West End Church, for our united Communion Service, and, not only as individual members of Christ, but so far as it was possible to do, as *representatives of the Churches*, pledged ourselves and them to renewed consecration. May our once crucified but now exalted Saviour accept our surrender, and commission us afresh to carry on His Work.

"We ask no other wages,
When He shall call us home,
But to have shared the travail,
Which makes His Kingdom come."

We are glad to know that the Meetings in Shepherd's Bush District were, in many ways, a decided improvement upon those held in recent years. Our own contribution to the West London Hospital though not so large as in 1898, will, we trust, be larger than we feared at our early Meetings it could become.

—A. R. SHREWSBURY, *Hon. Sec. Prayer Union.*

petitions and determinations

St John's parish.

Unitarian Church, Shepherd's Bush. ^{Wmk 30/3}

Re yrs of 12 Inst
There is at present no
Minister at Avenue Road
Church, Shepherd's Bush.
W. Kealy, to whom yr letter
was addressed, has left the
neighbourhood.

Mr Adams, the Congregational minister near here,
says this is a quite small affair, run by the
Plymouth Brethren on the usual unattractive basis.
The people hold quite aloof from all other sects.

Oaklands Congregational Church - Rev. J. Adams

Social Christianity.

St. Luke's parish.

Interview 30
2 with 30

17

Interview with the Rev. J. Adams, Oaklands Congregational Church, Shepherd's Bush - May 26th 1899 - J.A

Mr Adams, who has been at Oaklands for 7 or 8 years and has a flourishing church and congregation, is a strong believer in the social side of religion, holding that Christianity is for this world and is closely concerned with the material welfare of the people. To this end he identifies himself and his church with the Liberal and Progressive movements, fighting against any attempt at the introduction of priestly doctrine on the School Board, and for the best education for the children of the poor: and for a Liberal and Progressive spirit in Parliamentary and municipal affairs because he believes they must stand for purity in public life, for improved housing and public health, and generally for social & humanitarian Christian principles. He lends his church building, uses his pulpit, and takes his place on public platforms for this purpose, to the dissatisfaction, he admits, of a small conservative element

in his congregation, but evidently to the relish of most of his flock, who are attracted by his style of work. He wishes, he says, that he could stand more aloof from party questions, than he does, but he finds he must go right into it, if the cause in which he believes is to have any success, for the other ministers in the locality do not take it up, and there is hardly anybody else to do it. This I can well understand. Shepherd's Bush, consisting largely of the "genteel" class, or of the apers of gentility, is not a place in which Radicalism would flourish naturally, and the fact that it has any measure of success at all is probably due to M^r Adams' persistency. But I judge M^r A. to be too earnest a man to stand aside, however favourable might be the circumstances. If you want anything done properly, do it yourself is most likely to be his rule of life.

M^r Adams is an almost devout believer in our work: makes frequent allusions to it in his discourses, and preached a course of 6 sermons upon it, which were afterwards published in a religious magazine.

Working class apathy.

Failure of mission work.

Adams - Congregational

He confesses to the usual sense of disappointment at the response of the working people to his efforts on their behalf. Has arranged his discourses specially for them, has sent his announcements to Radical clubs, and other workmen's organizations, but only a few have attended, tho' perhaps more than he thinks, for he has afterwards heard of men being present whom he had quite failed to recognize as working people, because of their being well dressed.

This sense of failure and disappointment is made more particularly connected with the mission work of his church at Starch Green, a poor and rough locality. They started a mission hall^{*} there, had good singing and attractive meetings &c. but excepting when they gave a tea, could not reach the typical Starch Greener, and have now, so far as his church is concerned, practically given up the work among adults, though the mission is still carried on in a very humble way by 2 or 3 men. He used to give one evening each week to going down to hold a service there, but he found he only got his own people, or

* Apparently this hall was the original Oaklands Church, the congregation removing to the new building in Maxbridge Rd. in 1890 & then continuing the Hall as a mission & Sunday School. This I gather from the report. M^r A. did not mention it.

drew people away from other religious meetings, so gave it up. There is, of course, no difficulty in getting the children, and the Sunday School work flourishes, but to reach the parents is quite another thing. Had he time to devote himself to it, he believes he could succeed, and he gave an instance in proof of this. A special effort has always been made to get the parents to attend the anniversary services of the church. The Sunday School teachers have visited the parents in their homes, and specially invited them, but with very slight success. This year he undertook the visiting himself, and going round on his bicycle, called on 119 families. The result was he had his church crowded. The mission has been largely in the hands of young people, who have done their best, but could not, of course, devote themselves to it.

He thinks the churches are suffering now on account of the anti-democratic spirit which formerly prevailed amongst them. The working men are prejudiced against the churches, thinking of them as they used to be, and not as they are.

OAKLANDS
 Congregational Church,
 UXBRIDGE ROAD,
 SHEPHERDS BUSH, W.

ANNUAL
REPORTS

OF THE
*Various Institutions connected
 with the Church.*

February, 1899.

A. T. WHITTELL, PRINTER, 264, UXBRIDGE ROAD, W.

25

Adams - Congregational

Turning to what is going on at Oaklands Church, itself, we find the usual signs of a pretty active congregation the different features of its work being set forth in the subjoined report.

The congregation consists mostly of the upper middle class, but contains some of each class except the quite poor, - professional men, shop keepers, clerks, assistants &c. There is a membership of 200 to 250, and a Sunday congregation of 700 or 800, larger and more democratic in the evening than morning, the galleries then being well filled. The building will hold 900 comfortably, and is packed on special occasions, but always looks fairly full. Bright service and good choir.

There is only a small hall attached to the church at present, but it is proposed to build a new hall, and to hold, in connection with the literary society, a series of first-class lectures &c. on the style of Westbourne Park.

M^r Adams believes there is scope here for a good deal in this way. He lately organized the finest concert ever held in Shepherd's Bush, having

MOTTO FOR 1899.

—❖—❖—❖—

“HAVE FAITH IN GOD.”

S. Mark 11, 22.

**The people that do know their God
shall be strong, and do exploits.**

Dan. 11, 32.

CONTENTS.

	PAGE
PASTOR	2
OFFICERS	2
DEACONS	2
COMMITTEE	2
DELEGATES	2
SERVICES	3
PASTOR'S ANNUAL ADDRESS	4
CHURCH REPORT	6
LIST OF CHURCH MEMBERS	9
BALANCE SHEET—CHURCH	11
DEFICIT & LOAN ACCOUNTS	12
SUNDAY SCHOOL REPORT	13
TEMPERANCE SOCIETY	16
CHRISTIAN ENDEAVOUR REPORT	18
LITERARY SOCIETY REPORT	20
POPULAR CONCERTS REPORT..	21
BAZAAR ACCOUNT	22
CHRISTMAS SALE OF WORK	22
LANTERN ACCOUNT	23
DORCAS SOCIETY	23
BUILDING FUND	24

Oaklands Congregational Church, SHEPHERDS BUSH.

Pastor.

Rev. JOSEPH ADAMS, 19, Boscombe Road, Shepherds Bush.

Treasurer.

Mr. J. FOSS, 24, Priory Road, Bedford Park, W.

Secretary.

Mr. JOHN MORTON, 26, Priory Road, Bedford Park, W.

Deacons.

Mr. A. ARNEY, 192, Holland Park Avenue, W.
 ,, J. FOSS, 24, Priory Road, Bedford Park, W.
 ,, HUNT, 28, Arminger Road, Shepherds Bush, W.
 ,, J. MORTON, 26, Priory Road, Bedford Park, W.
 ,, A. NORRIS, 2, Percy Road, Shepherds Bush.
 ,, POWELL, Oakdene, Woodstock Road, Bedford Park, W.
 ,, F. J. UNITE, 237, Uxbridge Road, Shepherds Bush, W.

Committee of Management.

The Committee consists of the Pastor, the Deacons, and the following gentlemen:—

Mr. BARRETT, 1, Blomfield Gardens, Shepherds Bush, W.
 ,, J. COX, 11, Ormiston Road, Shepherds Bush, W.
 ,, HILL, 63, Davisville Road, Shepherds Bush, W.
 ,, OCKENDEN, 135, Coningham Road, Shepherds Bush, W.
 ,, PLUCKROSE, 20, Ormiston Road, Shepherds Bush, W.
 ,, WESSON, 335, Goldhawk Road, Hammersmith, W.

Delegates.

To the London Congregational Union—

Miss CLEAVE, Messrs. COX, FOSS, HUNT, LEWIS, LEWIS, G. A.,
 MATHEWS, TARRANT, and WESSON.

To the Congregational Union of England and Wales—

Messrs. FOSS and HUNT.

To the London Missionary Society—

Miss CRICHTON.

Chapel Keeper.

Mr. CARRAD, 46, Stowe Road, Shepherds Bush, W.

Services, &c.

Sunday.—Public Worship, 11 a.m. and 7 p.m.

The Communion of the Lord's Supper is celebrated at the close of the Morning Service on the first Sunday in January, April, July, and October, and after the Evening Service on the first Sunday in each of the other months.

The Church Meeting is held on the Thursday next preceding the first Sunday in each month.

Week-Night.—Every Thursday, at 8 p.m.

Devotional Meeting every Sunday, at 10.15 a.m.

Bible Classes for Young Men and Young Women are held at Oaklands on Sundays, at 3 p.m.

Sunday Schools at the Congregational Hall, (Askew Road,) and at Oaklands Church, at 3 p.m.

Society of Christian Endeavour (at Oaklands), Mondays, at 8.30 p.m.

Temperance Societies, at Oaklands on Wednesdays, at 7 p.m. for Juniors, and at 8.30 for Seniors.

Dorcas Society and **Working Party** (at Oaklands), alternately on Thursdays, from 3.30 to 7.30 p.m. during the winter, but Working Party only every other Monday during the remainder of the year.

Literary Society (at Oaklands), every Tuesday, at 8 p.m. (October to March).

PASTOR'S ADDRESS.

MY DEAR FRIENDS,

The year 1898 has been in many respects a remarkable one in the history of our Church. It has been one of serious loss, through both death and removals from the district. Many well-known names have been erased from our Church roll, and we miss faces which we were accustomed to see among the regular worshippers. Despite this serious inroad upon our membership, through the migratory character of the population, our finances have reached the highest point yet attained during the seven years of my ministry amongst you. The pew rents, weekly offerings, and special collections all show an advance upon previous years. This is all the more noteworthy taken in conjunction with the fact that special demands have been made upon you in connexion with the bazaar that was so successfully carried out in the summer, and also the subscription of £100 which had been outstanding on previous accounts. Such a willing response to the demands made upon the congregation show that the heart of our people is right, and that the growing needs and increasing difficulties of our work are grappled with generously and cheerfully. It is evident to many of us that God requires a still greater work than any we have attempted, and I trust that we shall not disappoint Him. We hope to increase our Sunday School accommodation and enlarge our buildings, so as to meet the growing needs of our various societies. Suggestions as to ways and means will shortly be laid before you, with a view to enlisting your interest and support. I have no doubt that our hopes will be fully realized without imposing any heavy burden upon our shoulders, provided all the members of our congregation do their part.

The motto with which we commenced the year—"Have faith in God"—commits us to a progressive policy. We cannot hold back in any way in which our Master seems to be leading us. We have had many difficulties, many checks, not a few

disappointments, but they have only served to emphasise the gracious truth that "He is faithful that hath promised." There is a large margin left for faith. Let us therefore thank God and take courage.

Many of you have had a heavy strain placed upon your faith in the sorrows and losses that have befallen you. The year that has just closed has been exacting in that respect; but we have prayed that your faith might not fail. Has not God answered that prayer?

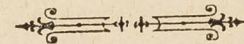
Some of you have heard God's voice, asking for the dedication of your love and gifts to His service. Why have you not responded? We have been watching for you; we long to receive you into His fellowship. Some of you have grown cold in His love, callous in His service. Why? When has He forgotten you, or ceased to care for you?

Let the last year of the century be a year of fresh dedication and reconsecration: a year of joyful, happy work in our Lord's service. Then it will be well with the Church, the home, and the individual.

With all good wishes and Christian affection,

Believe me yours sincerely,

JOSEPH ADAMS.



Report, 1898.

The event in the history of our Church during the past year that stands out clearly above all other matters is the Bazaar, held in May last. A working party was organized in 1897, and owing to its regularity and activity, strong hopes were raised as to the possibility of holding a successful Bazaar. On February 16th, 1898, a Committee was appointed to carry out this purpose. It was decided to hold the Bazaar on May 17th, 18th, and 19th, at Oaklands. An elegant temporary room was erected on the eastern side of the Church and brilliantly illuminated by electricity. This room with the Vestry and Hall, gave sufficient accommodation for all the varied attractions determined upon. In answer to the appeals for help a very large and hearty response had been made and the stalls were packed with a multifarious and attractive selection of goods. Many entertainments were provided, and so successful were the proceedings that the Bazaar was continued for an extra evening. The result was a nett balance of £250 and a valuable surplus of goods remained with which a successful Christmas Sale was held, realizing the further sum of £20 18s 4d. The Ladies' Working Party, the Stallholders, the Entertainment providers and helpers, and the Committee generally, are again accorded the hearty thanks of the Church for the admirable and successful carrying out of this Bazaar and Sale of Work.

Your Committee recommended the Church to apply the £250 raised by the Bazaar to reducing the heavy mortgage. This was agreed to and Albert Spicer, Esq., M.P., generously added £25 to this amount conditionally upon our raising the total to £300, which we were enabled to do by the kindness of our old friend, Mr. Jno. Unite, who contributed the remaining £25. Thus our mortgage is now £300 less than it was at the beginning of the year.

Contributions have been regularly made by a few of our members to the Building Fund, which now amounts to £201 13s. 11d. The Sunday School (Teachers and Scholars) has raised £63 os. 3d. of this fund.

To meet the demand made by many of our people for Sunday School accommodation, an Auxiliary School was commenced at Oaklands in May. This has amply justified its existence, and the parent school at Starch Green has not materially suffered through its formation.

Both our Bible Classes have had a change of leadership. Through removal from the district Mr. Spears was obliged to resign, and with reluctance his resignation was accepted; his place is taken by Mr. Horton. Mrs. Adams also was obliged to resign her leadership of the Young Women's Class, and she has been succeeded by Mrs. Morton.

Our Bands of Hope have been somewhat re-modelled as Temperance Societies, and shew vigorous life, especially the Junior Section.

The Literary Society carried through most successfully a capital programme of Lectures and Entertainments.

The difficulties met with in organizing the new Sunday School, carrying on our Bible Classes, and so arranging all the other meetings in our limited accommodation, called very loudly for consideration. Your Committee were fully alive to this call and every effort has been made to meet this need. A Sub-Committee was appointed to obtain plans, &c., and on January 9th they met, and after considering the plans sent in recommended the Church Committee to finally choose between two sets. This was done, and their recommendations were brought before the Church Members at a Special Meeting and adopted. It is matter for congratulation that the selected Architect proved to be Mr. J. Beart Foss, son of our esteemed Treasurer.

At our Annual Church Meeting held in February, 1898, Mr. F. J. Unite, who for seven years had been Treasurer, resigned his post. Very regretfully did the Church accept this resignation and Mr. Foss was elected to succeed him. As a slight mark of appreciation of the valuable services Mr. Unite had rendered to the Church, a handsome drawing room clock was presented to him at the Annual Social Meeting held on February 24th. A beautiful set of dish covers was also presented to Mr. Morton who had been Secretary of the Church for a similar period.

On November 13th the Anniversary of the Church and of the Pastor's settlement was held. The day was opened and closed by devotional meetings. The morning service was conducted by the Rev. John Park, of Wandsworth, and the evening service by Mr. Adams. A public meeting was held on the following Thursday, when the chair was taken by Henry J. Glanville, Esq. (Hampstead), and useful and encouraging addresses were given by the Chairman and the Revs. W. Herwood Allen (Kentish Town), Frederick Hastings (Chelsea), D. M. Jenkins (Shepherds Bush), A. R. Shrewsbury (Hammer-smith), and our Pastor.

Our Members Roll numbers 218. At the commencement of the year we had 236. We have received 10 new members, 13 have been transferred to other churches, 15 have allowed their membership to lapse, while we have lost by death Mrs. Mathews and Mr. Bonner.

The work of the Church has been carried on steadily, and though other matters may have secured more pressing notice, yet many signs are visible of the continued activity in things spiritual.

Our much loved pastor completed his seventh year of work with us in November. Many of us can look back over this period with thankful hearts at the continued prosperity of our Church, and though there have been many difficulties to be encountered—some troubles to be met—serious struggles to be made—yet through all and over all the Blessing of Our Heavenly Father, which maketh rich, has been abundantly manifested. Our Church has been greatly increased and improved since 1891, and we may confidently look forward with hope and great expectation, for "Hitherto hath the Lord helped us," and He will bless us more bountifully still—if *we* are faithful.

List of Members.

Ackland, Mr.	Burrell, Mr.	Gibson, Mrs.
" Mrs.	" Mrs.	" Mr. L. R.
Adams, Rev. Joseph	Butcher, Miss M. C.	Gilbert, Mrs.
" Mrs.	Cannon, Mrs.	Gillies, Mr.
Ade, Miss Violet	Carrad, Mr.	" Mrs.
Akehurst, Mrs.	" Mrs.	" Miss
" Mr. A. J.	Christmas, Mr.	" Mr. (Jnr.)
Aldridge, Mr. T.	" Mrs.	Hawking, Mr. C.
" Mrs.	Cleave, Miss Mary	Healey, Miss
Archer, Miss U.	" Miss Annie	Henry, Mr.
Arney, Mr.	" Miss Ada	" Mrs.
Arnold, Miss L. A.	Collar, Mr.	" Miss L.
" Miss E.	" Mrs.	" Miss M.
Arthur, Dr.	Collett, Mrs.	" Mr. Wr.
" Mrs.	Colwill, Mrs.	" Mr. J.
Axton, Miss Clara	" Mr. J.	Hewlett, Mr.
Axton, Mr. J. R.	Conrath, Mrs.	" Mrs.
" Miss Ethel	Cooper, Mr. T.	Hill, Mr.
" Miss Lily	" Mrs.	" Mrs.
" Miss Madeline	" Miss	" Mrs.
Baker, Mr.	Copland, Miss	Hird, Mr.
" Mrs.	Cox, Mr. John	" Mrs.
" Miss	" Mrs.	Horton, Mr.
" Mr. Charles	Crichton, Mr.	" Mrs.
" Mr. George	" Mrs.	Hunt, Mr.
" Miss Fanny	" Miss F.	" Mrs.
Bailey, Mrs.	" Mr. A. B.	James, Mr. W.
Barnett, Mr. J. A.	" Mrs. A. B.	" Miss A.
Barrett, Mr.	Davey, Miss	Jeffrey, Mrs.
" Mrs.	Davies, Mrs.	Jenkins, Rev. D. M.
" Miss W.	" Mr. J. H.	" Mrs.
Bayly, Mrs.	Edwards, Mr.	Johnson, Miss
Beeny, Mrs.	" Miss	Kidner, Miss
" Miss M.	" Miss A.	Krömschroeder, Mrs.
Beer, Miss	Forbes, Miss	Leach, Miss
Bird, Miss	Foss, Mr.	Leaper, Mr.
Bolton, Mrs.	" Mrs.	" Mrs.
Bonner, Mrs.	Frewer, Mr.	Lewis, Mr.
Brown, Mrs.	" Miss F.	" Mrs. M.
" Miss E.	Gage, Mr.	" Miss
Burden, Mr. Alfred	" Mr. C. J.	" Mrs.
" Mrs.	" Mrs. C. J.	Lewis, Mr.
" Miss W.	Gibson, Mr.	" Mrs.

Lloyd, Mr.	Peters, Miss R.	Singer, Mrs.
" Mrs.	Piller, Mr.	Sneesby, Mr. W.
Lock, Mr. E.	" Mrs.	Snelling, Miss
" Mrs.	Pope, Mr.	Spears, Mr.
Lyford, Mrs.	Powell, Mr.	" Mrs.
Macfarlane, Miss	" Mrs.	Steele, Mrs.
Maclaren, Mrs.	Pratt, Mrs.	Stubbings, Mr.
Mathews, Mr. C. H.	" Miss	" Mrs.
Mathew, Mr.	Reeves, Mr.	Tarrant, Mr.
" Mrs.	" Mrs.	" Mrs.
Minards, Mr.	Reynolds, Miss	Thomas, Miss
Morton, Mr. J.	Riddell, Miss	Thwaites, Mrs.
" Mrs.	Roberts, Mr.	Tillotson, Rev. R. J. C.
Moss, Mr.	" Mrs.	" Mrs.
" Mrs.	" Miss	Topham, Mr.
" Miss	" Mr. A.	" Mrs.
" Mr. Albert	Robson, Mr.	Townsend, Mrs.
" Mr. Howard	" Mrs.	Underwood, Miss
" Mr. Harold	Ross, Mr.	Unite, Mr. F. J.
Nichols, Miss E.	Rowe, Miss	Vincent, Mr.
Norris, Mrs.	Salthouse, Mrs.	" Mrs.
Norris, Mr. A.	" Miss	Wayte, Miss E.
" Mrs.	Sanders, Mr. H. G.	Wesson, Mr. H. N.
Paull, Mrs.	" Mrs.	" Mrs.
Pecover, Mr.	" Miss	Whiteside, Mrs.
" Mrs.	Sharrow, Mrs.	Withers, Miss
Penniel, Miss	Sherman, Mr. S.	Woodin, Mr. S.
Peters, Mrs. E.	Simpson, Miss	



Receipts and Expenditure for year ending December 31st, 1898.

	RECEIPTS.	EXPENDITURE.	£	s.	d.	£	s.	d.
Pew Rents ...	299 15 9	Pastor's Fund ...	350	0	0			
Weekly Offerings ...	315 5 10	Supplies ...	14	14	0			
Communion Fund ...	22 2 8	Organist ...	22	12	0			
Special Collections ...	40 10 1	Organ Blower (10 months) ...	2	10	0			
Sacred Concert ...	56 15 0	" Tuner ...	5	0	0			
Concerts at Mission Hall ...	16 3 0	Church Keeper ...	84	0	0			
Orchestral Society ...	3 0 0	Poor Fund ...	26	16	2			478 16 0
Donation ...	1 1 0	Gas ...	2	14	0			10 18 0
Do. ...	0 2 6	Water ...	4	1	4			
Contributions from Mission ...	12 0 0	Income Tax ...	17	18	10			
Collection (Soiree) ...	0 10 6	Stationery and Printing ...	4	2	0			
Rent of Frontage (Mission Property) ...	45 0 0	Fire Insurance ...	9	13	6			
Rent of Window Lights (5 years) ...	2 15 0	Florists ...	18	5	5			
Balance from Holland Park Branch Bank ...	2 4 3	Coals (2 years) ...	32	1	2			
Bazaar, nett proceeds ...	250 0 0	Repairs ...	1	19	10			
Donation, A. Spicer, Esq., M.P. ...	25 0 0	Wood (3 years) ...	3	10	0			
Do. J. Unite, Esq., J.P. ...	25 0 0	Rates ...	3	3	0			
		Advertising ...	6	5	10			
		Sundries ...	130	11	1			
Pew Rents still due to 31st Dec. 1898—		Donations to Institutions—						
£32 os. od.		London Congregational Union	9	1	9			
		Irish Evangelical Society	4	0	0			
		Sunday School	13	8	8			
		Congregational Union of England and Wales	1	1	0			
		London Missionary Society	11	13	7			
		Hospital Fund	4	0	0			
		Colonial Missionary Society	3	3	0			
		Interest on Loan (1 1/4 year) ...	95	14	2			
		Law Costs of New Mortgage	57	7	0			
		Interest on Mission Property	46	18	8			
		Paid off Loan	199	19	10			
			300	0	0			
			1117	5	7			
			49	7	4			
			1166	12	11			

Pew Rents still due to 31st Dec. 1898—
£32 os. od.

Examined with Vouchers and Pass Book
and found correct,
H. N. WESSON,
C. H. MATHEWS.

Balance ...

£1166 12 11

1896-97 DEFICIT.

	£	s.	d.		£	s.	d.
Sale of Work	...	20	18	4	Balances due to late Treasurer	...	100 13 8
By special Donations	...	79	15	4			
		<u>£100 13 8</u>					<u>£100 13 8</u>

The above deficit has been met by very liberal contributions of Friends.

LOAN ACCOUNT.

By Loan from Messrs. Kerly, Son & Co.	...	£2000	0	0
Repaid	...	300		
		<u>£1700 0 0</u>		
Balance	...			

SUNDAY SCHOOLS

At STARCH GREEN HALL and OAKLANDS.

President—THE PASTOR.

Superintendents—Mr. J. MORTON, 26, Priory Road, Bedford Park, W.; Mr. G. PLUCKROSE, 20, Ormiston Road, Shepherds Bush, W.

Treasurer—Mr. A. NORRIS, 2, Percy Road, Shepherds Bush, W.

Secretaries—Mr. J. R. AXTON, Lime Grove, Shepherds Bush, W.;
Mr. F. HENRY, 189, Uxbridge Road, " "
Mr. S. SHERMAN, 2, Rylett Crescent, " "

Librarian—Mr. W. ATKIN.

Registrars—Messrs. G. LEWIS, E. CARRAD and C. STRIKE.

Delegates to Local Branch S.S. Union—Miss M. F. AXTON, Miss SANDERS and Mr. HORTON.

Young Men's Bible Class Leader—Mr. HORTON, 56, Paddenswick Road, Hammersmith, W.

Young Women's Bible Class Leader—Mrs. MORTON, 26, Priory Road, Bedford Park, W.

Teachers—The Misses C. Axton, M. F. Axton, Minnie Axton, W. Burden, Cleave, Cole, Davey, Gilbert, Gillies, A. Gillies, I. Gillies, Jones, Leach, Lewis, McFarlane, Randall; Reynolds, Sanders, Sisman, J. Sherman and Withers, Messrs. Arney, Burrell, McCrerie, Mathews, Minards, Peters, Tarrant and Tillotson.

During the past year an important step has been taken in respect to the final removal of our Sunday School to Oaklands.

When the Church was transferred in 1890 from the Starch Green Hall, it was impossible to bring the School also, owing to the lack of suitable premises at Oaklands. The separation of Church and School was not felt very keenly at first, but as our

YOUNG PEOPLE'S SOCIETY OF CHRISTIAN ENDEAVOUR.

President—Rev. J. ADAMS.

Vice-President—Mr. R. BARRETT.

Treasurer—Mr F. BURRELL.

Corresponding Secretary—Miss A. CLEAVE.

Recording Secretary—Miss L. AXTON.

Secretary Watchers' Band—Miss SANDERS.

We began 1898 with 27 Active and 2 Associate Members, but during the year 8 of our Active Members have left, 6 of whom have removed to other neighbourhoods, and amongst these have been some of our best workers.

Mr. Spears, who helped to form the Society, and who, since its commencement, has been the Recording Secretary, has removed to Marylebone; Mr. Sherman, the Corresponding Secretary, has resigned through pressure of business; Mr. Hawking, the Chairman of the Missionary Committee, has gone to Birmingham, but he has there started a new C. E. Society in connection with Mosely Road Congregational Church, and which has already over 50 members, so we have reason to rejoice that our loss has resulted in substantial gain to the cause for which we work and pray.

During the year we have received into the Society 7 Associate Members. Our hope is that these may soon be on the Active roll.

Our Pastor, since he has been relieved from his official duties in connection with the West London Congregational Union, has been able to attend the weekly prayer meeting, and give his much valued help.

The members have, with but few exceptions, attended the meetings with the utmost regularity, and constant testimony is borne to the help derived from them.

The poorer districts around us and the Cab Shelters have been visited, and a large quantity of useful literature distributed, and 18 poor families have been helped from our Samaritan Fund.

Cottage Meetings are being held every Sunday evening at the residences of people who, by reason of infirmity, are unable to attend Church services.

On two Sunday evenings a party of our Endeavourers has taken its turn in assisting at the service held in Fulham Workhouse, on the last occasion taking the entire service.

On December 12th, a substantial Tea was given in the Lecture Hall to 42 old people, and each one on leaving received a useful garment.

The Rev. W. W. Stevenson, of the London Missionary Society, visited our Society in August last, and a branch of the L.M.S. Watchers' Band has been started; 14 members have been enrolled, and it is to be hoped that a great many of our Church and congregation will embrace the opportunity of joining this prayer union. Full particulars may be obtained, and membership cards, from the Secretary, Miss Sanders, The Lawn, Shepherds Bush Green.

“The harvest truly is plenteous, but the labourers are few.

Financial Statement.

RECEIPTS.	£	s.	d.	EXPENDITURE.	£	s.	d.
Balance in hand	0	2	7	General Expenses—			
Collections	2	18	1	Printing, &c.	3	8	1
Per Missionary Committee	2	0	0	Old People's Tea	0	8	0
				Per Missionary Committee	0	2	1
				Balance in hand	1	2	1
	£5	0	8		£5	0	1

MINNIE HENRY,
Treasurer.

Building Fund Statement, Dec. 31st, 1898.

<i>Receipts.</i>			<i>Expenditure.</i>				
	£	s.	d.		£	s.	d.
Amount in hand,				Amount paid off Mortgage	300	0	0
from 1897 a/c. ...	100	0	1	Balance in hand, carried to			
Nett Profit of Bazaar ...	250	0	0	1899 a/c. ...	201	13	11
Donations—							
Albert Spicer, M.P....	25	0	0*				
Anonymous ...	25	0	0*				
John Unite, Esq., J.P.	25	0	0				
Anonymous ...	5	0	0*				
Envelope Collection ...	30	6	9				
Quarterly Subscriptions	3	7	6				
Annual do. ...	10	2	0				
Coll. in Sunday School	26	8	3				
Interest on Invested							
Capital ...	1	9	4				
	<u>£501</u>	<u>13</u>	<u>11</u>		<u>£501</u>	<u>13</u>	<u>11</u>

* These donations were made specially toward liquidation of existing Mortgage debt.

ARTHUR NORRIS, *Hon. Treasurer.*



District Visiting.

Charity.

Temperance Work.

Adams. Congregational

27

some of the highest class of singers down, and made it quite a success.

The Society of Christian Endeavour connected with the church are doing good work in holding services in cottages &c. in the poorer district, but generally he thinks district visiting 'does little good'. The people who go, often do not properly understand the poor, who have a good deal of pride, and need careful handling. The minister can do good work in this way himself.

There is a sacrament fund, small in amount, but sufficient for the purpose, which is given largely to people but slightly connected with the church. He has a right to give relief from this fund, strictly privately in special cases of sickness, and has no difficulty in getting additional help if needed. One hard winter they ran a soup kitchen, and spent £30 or £40, besides gifts from tradesmen.

Temperance work among adults is not flourishing, but does well among the young. They fight the

Adams - Congregational

public houses hard, and no new license is granted. For 5 years in succession a license has been granted by the local magistrates to a house which it is proposed to build, but each time has been successfully appealed against at Blerkenwell. Attributes this ~~man's~~^{publicans} success with the local magistrates to his having got on to the Vestry, & thus got in company with the Chairman of the Board Bench. Whilst agreeing that the effect of refusal is to enhance the value of existing licenses to some extent, he takes the line that each new house is an additional source of temptation, offering increased facilities for drinking, and so making fresh victims.

Free Church Council.

Oaklands co-operates with other churches by means of the Free Church Council, but the latter rather moribund, because, he believes, he is the only minister there who pushes social questions well to the front. They acted well together in the School Board election and got their candidates elected, but split up over the S.C.C. election, and as a body did nothing.

Other Churches.

Local Government.

Poor Law.

Adams - Congregational

Of other churches, he says that S. Stephens works very actively on High Church lines and has 2 mission halls. S. Lukes does a good deal of district visiting.

The undenominational church, Avenue R^d is run by the Plymouth Brethren on very plain ^{narrow} and unattractive lines. Mr Neatly held quite aloof from the other Free Church ministers. It is quite a small affair.

The Congregational church at Hammersmith Broadway is a small affair, and that at Dalling R^d is badly attended, partly because of its position in a side street, and partly because of the line taken by the minister, who will not touch social work.

Mr A. has a poor opinion of the Hammersmith Vestry. Says it is in the hands of a very corrupt ring, who boycott anyone who dares oppose them. Every public house is a committee room for them, and for the Conservatives, generally. Most have their own axe to grind. They blundered considerably in erecting a Town Hall in one corner of the Parish and neglect this part of the Parish.

Regarding Poor Law, Mr A. produced a letter

Adams - Congregational

from one of his congregation who is a Guardian. This stated that the Guardians of the Fulham Union had adopted classification as far as possible: that they favoured out door relief, cottage homes, and boarding out and objected to the 'barrack system'.

M^r Adams is in early middle life and is not a strong looking man, his face being pale, and weakened by a lightish beard and hair which is rapidly receding to the back of his head. But he is probably thoughtful, earnest and determined.

June 1st 1895 St. Peter's parish.

West 30
10th 30
30 3

Interview with Rev. W. J. Brown,
Wesleyan Church (Quincomb), Hammamite

Mr Brown is a rather stuffy little
man of about 60 with a shock of grey hair,
grey whiskers and a very red nose.
He was very cordial and friendly and expressed
his regret at being able to do so little to help
the work of "one for whom we all have a
genuine respect."

Mr B. filled in our form in my
presence with ~~some~~ some cursory comments but
there is little to add to it, as this is just
a very ordinary Wesleyan Church with very little
life in it.

Asked whether he considered the district
a favorable one for his denomination Mr B.
answered with an emphatic "no." "Why" he
said "is a county district with the same
area and population there would be four or five
churches; how we could fill one." Mr B.
has been in London for 22 years, at

Mayhem and City Road for instance and is considered that "the settled London population is of all the most difficult to reach. Most of the adherents of this church are the third or fourth generation of Wesleyan families which have been settled in the district for several generations: there is some small secession from the Church of England owing to Ritualism but practically none from other free churches and no converts from the non-church-going.

It will be seen that Mrs D. gives his evening congregation as 600: that in the morning is very small. The church membership is about 200.

Speaking of the church of England Mrs D. thought its influence was small: as she said "the clergy keep themselves aloof." "I have been here for eighteen months" said Mrs D. "and have not spoken to a clergyman: it is their fault: he would gladly meet them and work with them: but it must be

Brown Wesleyan

on terms of equality. We want- abate
one job or title of our mutual position"

<p>1. The Church is a society of men and women, united by a common faith and a common life. It is not a mere organization, but a living organism, which grows and changes as it moves through the world.</p>	<p>2. The Church is a society of men and women, united by a common faith and a common life. It is not a mere organization, but a living organism, which grows and changes as it moves through the world.</p>
<p>3. The Church is a society of men and women, united by a common faith and a common life. It is not a mere organization, but a living organism, which grows and changes as it moves through the world.</p>	<p>4. The Church is a society of men and women, united by a common faith and a common life. It is not a mere organization, but a living organism, which grows and changes as it moves through the world.</p>

THE CHURCH AND THE PEOPLE IN GOSPEL AND IN LIFE

THE CHURCH AND THE PEOPLE IN GOSPEL AND IN LIFE

Life and Labour of the People in London: INFLUENCES.

(Mr. CHARLES BOOTH'S Inquiry.)

QUESTIONS to be asked in each parish as to the work of the Church:—

- (a) What is the general character of the population?
- (b) What portion do the ministrations of the Church touch?
- (c) What persons are employed? (stating duties and whether paid or not)
- (d) What buildings are used? (including mission rooms, schools, and clubs)
- (e) What services or other religious meetings are held, and by whom and by how many attended?
- (f) What Social Agencies are connected with the Church—institutes, societies, clubs, entertainments, meetings, &c.
- (g) What Educational Work is done?
- (h) To what extent are the people visited? (by Ministers or District Visitors)
- (i) What arrangements are there for nursing the sick?
- (j) To what extent is charitable relief given or administered by the Church?

Mixed - Middle, working and lower class.
Middle working - Half half.
{ Mission Band.
{ Sunday School Teachers
Nothing outside Church premises
Divine service Sunday & weeknight.
Sunday School - 200
Sunday evening service - 600
Literary Society - Temperance Society
Seniors & Juniors Bands of Hope -
see f.
No special agency for this purpose.
None.

General Questions—

- (k) Under what other religious, charitable, or philanthropic influences do the people come?
- (l) What co-operation is there between the Churches and other bodies.

Our own poor receive quarterly amounts from the poor's fund.
Cannot answer.
No cooperation with Church of England.
The Non-con-Churches and their ministers cooperate under direction of Free Church Council - pulpit exchanges are made -
A cordial & harmonious feeling prevails amongst the Free Churches.

Remarks with reference to the district are invited on—

- (I) Local Government (including Poor Law administration)
- (II) Police
- (III) Drink
- (IV) Prostitution
- (V) Crime
- (VI) Marriage
- (VII) Thrift
- (VIII) Health
- (IX) Housing and Social Condition generally

Parish - Hammersmith - District

[Where possible, a comparison should be made between Past and Present.]

NOTE - It is not intended that this Form should be filled up, but it may be found useful for making notes preparatory to an interview.

Wesleyan Methodist
Church.

ORDER

OF THE

Religious Services

IN THE

HAMMERSMITH CIRCUIT

FOR

APRIL, MAY, JUNE,

1899.

Ministers :

WILLIAM J. BROWN, 9, RAVENSCOURT PARK,
HAMMERSMITH, W.

WILLIAM H. ALLEN, 12, DORNCLIFFE ROAD,
FULHAM, S.W.

THOMAS CHOPE, 41, WOLSELEY GARDENS,
CHISWICK, W.

Circuit Stewards :

Mr. JOHN LEAN, 6, Stanley Villas, Rutland Road,
Hammersmith, W.

Mr. JOHN W. BUSH, 54, Tournay Road, Fulham.

Chapel Secretary :

Mr. JOHN BENNELL, 88, Shaftesbury Road,
Hammersmith.

Foreign Missionary Treasurer :

Mr. R. AUSTIN, 379, King Street, Hammersmith, W.

Worn-Out Ministers' Fund Treasurer :

Mr. THOS. MOULLIN, 2, Broomhouse Road,
Fulham, S.W.

Quarterly Meeting Secretary :

Mr. J. W. BUSH, 54, Tournay Road, Fulham, S.W.

Education Secretary :

Mr. C. W. ANDREW, 781, Fulham Road, S.W.

HAMMERSMITH :—

Society Stewards :

Messrs. J. C. WADSON and J. COSSON.

Poor Stewards :

Messrs. F. BUSH and O. VELTOM.

Chapel Stewards :

Messrs. G. JARVIS, T. MITCHELL, L. BARDWELL,
and F. HILL.

CHISWICK :—

Society Stewards :

Messrs. R. DEW and S. DAWSON.

Poor Stewards :

Messrs. C. J. BROWN and E. J. GOODALL.

Chapel Stewards :

Messrs. C. J. BROWN and B. J. ABEL.

MUNSTER PARK :—

Society Stewards :

Messrs. C. W. ANDREW and C. BARLOW.

Poor Stewards :

Messrs. S. G. BURGESS and G. MITCHELL.

Chapel Stewards :

Messrs. T. MOULLIN, A. R. WEBB, and T. MARTIN.

SUNDAY SCHOOLS.

MORNING ... 9.45. AFTERNOON ... 2.30.

PLAN OF APPOINTMENTS FOR THE JUNE QUARTER, 1899.

	APRIL.				MAY.				JUNE.				JULY.	
	9	16	23	30	7	14	21	28	4	11	18	25	2	
COLLECT FOR	1st Sunday after Easter.	2nd Sunday after Easter.	3rd Sunday after Easter.	4th Sunday after Easter.	5th Sunday after Easter.	1st Sunday after Ascension.	Whit Sunday.	Trinity Sunday.	1st Sunday after Trinity.	2nd Sunday after Trinity.	3rd Sunday after Trinity.	4th Sunday after Trinity.	5th Sunday after Trinity.	
MORNING LESSONS	Num. xvi. 1-35. 1 Cor. xv. 1-28.	Num. xx. 1-13. Luke xiii. 1-17.	Num. xxii. Luke xvii. 20-37.	Deut. iv. 1-22. Luke xxi. 5-24.	Deut. vi. Luke xxiii. 50 to xxiv. 12.	Deut. xxx. John iv. 1-30.	Deut. xvi. 1-17. Rom. viii. 1-17.	Isa. vi. 1-10. Rev. i. 1-8.	Josh. iii. 7 to iv. 14. John xv.	Deut. xxxiii. Acts iv. 31-37.	1 Sam. ii. 1-20. Acts ii. 22-47.	1 Sam. vii. Acts vii. 1-34.	1 Sam. xv. 1-23. Acts x. 1-23.	
HAMMERSMITH: RIVERCOURT	11. 0 6. 30	Clayton HM Clayton HM	Brown A Brown A	Student Allen	Brown FM Student FM	Brown Brown s	Allen CT Brown CT	Brown A Brown	Gooderidge ss Gooderidge ss	Brown Brown s	Allen HF Allen HF	Brown Allen	Brown A Allen L	Brown Brown s
Thursday	7. 30	Hopkins HM	Brown	Allen	Brown	M. Band	Fluck	Hill	Jarvis	Allen LP	Brown LM	Allen	M. Band	Allen
Friday, Prayer Meeting	8. 0	Jarvis	Wadson	Cosson	Holmes	Bardwell				Wadson	Cosson	Holmes	Bardwell	Fluck
CHISWICK: SUTTON COURT ROAD	11. 0 6. 30	Brown HM Allen HM	Chope Shephard	Brown Student	Southouse Brown ss	Student Student	Fitch Chope	Student CT Allen CT	Goodall Chope s	Student Student	Chope HF Bailey HF	Allen Brown	Student Student L	Jarvis Chope s
Tuesday	7. 30	Allen HM	Allen	Chope	Allen ss	Bailey	Brown	Chope	Allen	Chope	Brown LM	Chope	Allen	Chope
MUNSTER PARK: FULHAM ROAD	11. 0 6. 30	Allen Brown	Little FM Little FM	Allen Brown	Allen CT Allen CT	Allen s Allen s	Brown Allen	Allen Student	Allen Allen	Allen s Brown	Brown HF Allen HF	Clayton CA Clayton CA	Allen L Brown	Allen s Allen
Wednesday	7. 30	Brown	Allen	Allen	Brown	Paul	Allen	Brown	Allen	Brown	Allen LM	Stuart CA	Brown	Allen
MISSION ROOM: STRAND-ON-GREEN	6. 30	Jarvis	Folkerd	Fitch	Bailey	Goodall	Shephard*	Butcher	Jarvis	Folkerd	Fitch	Goodall*	Bailey	Shephard

MINISTERS.

REV. W. J. BROWN, 9, Ravenscourt Park, Hammersmith.
 REV. W. H. ALLEN, 12, Dorncliffe Road, Fulham.
 REV. T. CHOPE, 41, Wolseley Gardens, Chiswick.
 REV. A. CLAYTON, Secretary Century Fund.
 REV. W. GOODERIDGE, Great Queen Street.
 REV. THOS. LITTLE, Madras, India.
 REV. J. G. STUART, Bayswater.
 REV. J. H. HOPKINS, South London Mission.
 REV. A. J. SOUTHOUSE, Walham Green.
 STUDENT, Richmond College.

LOCAL PREACHERS.

MR. T. FOLKERD, 184, King Street, Hammersmith.
 MR. F. P. MARWOOD, 7, St. Olaf Road, Fulham.
 MR. H. B. FITCH, 3, Fairlawn Park, Acton Green.
 MR. T. C. JARVIS, 10, St. Paul's Mansions, Fulham Palace Road.
 MR. H. BUTCHER, 112, Duke Street, Chiswick.
 MR. W. R. TROUNSON, 12, Miles Street, Hammersmith.
 MR. W. A. SHEPHARD, 155, King Street, Hammersmith.
 MR. H. BAILEY, 206, High Road, Chiswick.
 MR. E. J. GOODALL, 33, Binn's Road, Chiswick.
 MR. W. A. DELL, 30, Clonmel Road, Fulham.

EXHORTER.

MR. A. E. TAPPER, (*) 254, King Street, Hammersmith.
 N.B.—Each Preacher is responsible for the supply of his own Appointment.

NOTICES.

OFFERTORIES are taken every Sunday in each Chapel in aid of the Circuit Funds, except where otherwise specified.
 The Society Stewards are desired to ensure the due announcement of Collections, Sacraments, &c., and to forward the Connexional Collections to the Superintendent Minister as early as possible.
 Previous notice must be given to the Society Stewards when the Sacrament of Baptism is desired. Both parents must be present.
 Hammersmith and Munster Park Churches are licensed for the Solemnization of Marriages.

REFERENCES.

S. Sacrament.
 B. Baptism.
 L. Lovefeast.
 L.M. Leaders' Meeting.
 A. Sunday School Address.
 M.B. Mission Band.
 C.T. Trust Fund.
 S.S. Sunday School Anniversary.
 C.A. Chapel Anniversary.
 H.M. Home Missions.
 F.M. Foreign Missions.
 H.F. Hospital Fund.

SPECIAL NOTICES.

The **CIRCUIT QUARTERLY MEETING** will be held at Chiswick, on Monday, June 19th. Stewards' Meeting, 5.30. Tea, 6.0. General Business Meeting, 7.0.

The **LOCAL PREACHERS' MEETING** will be held at Hammersmith, on Thursday, June 8th, at 8.30 p.m.

RIVERCOURT.

A **BAZAAR** will be held in the Schoolroom, on Tuesday, Wednesday, and Thursday, May 16th, 17th, and 18th; the proceeds to be devoted to the Renovation of the Interior of Rivercourt Church.

SUNDAY SCHOOL ANNIVERSARY.—Sunday, May 7th, Rev. W. GOODERIDGE.

HOME MISSIONS.—Sermons: Sunday, April 9th, Rev. A. CLAYTON. Meeting: Tuesday, April 11th. Speaker: Rev. J. H. HOPKINS.

MUNSTER PARK.

CHAPEL ANNIVERSARY.—Sunday, June 18th, Rev. A. CLAYTON. Meeting: Wednesday, June 21st. Speaker: Rev. J. G. STUART.

CHISWICK.

SUNDAY SCHOOL ANNIVERSARY.— Sermons: Sunday, April 30th, Rev. A. J. SOUTHOUSE and Rev. W. J. BROWN. Meeting: Tuesday, May 2nd. Speakers: Rev. W. J. BROWN and Rev. W. H. ALLEN.

VISITATION OF CLASSES.

HAMMERSMITH.

GEORGE LOWE,

Our Oldest Member and Leader,
DIED SUNDAY, JANUARY 29TH,
Aged 93 years.

Miss May	...	Monday, May 22...	7. 0 B
Mrs. Parish	...	Tuesday, ,, 23...	3.30 B
Mr. Wadson	...	,, ,, 23...	8. 0 B
Rev. W. J. Brown	...	Friday, ,, 26...	7.30 B
Mr. Hill	...	Sunday, ,, 28...	3. 0 B
Mr. Holmes	...	Monday, ,, 29...	7. 0 B
Mr. Jarvis	...	Wednes., ,, 31...	8. 0 B
Mr. S. Peck	...	,, ,, 31...	8. 0 B
Mr. Austin	...	Thurs., June 1...	8.30 B
Miss Jarvis (Jun.)	...	Wednes., ,, 14...	7. 0 B
Miss Braithwaite	...	,, ,, 14...	7. 0 B

CHISWICK.

Mr. Bailey	...	Sunday, May 21...	10. 0 C
,,	...	Monday, ,, 22...	8. 0 C
Mrs. Fitch	...	Wednes., ,, 24...	3.30 C
Rev. T. Chope	...	Friday, ,, 26...	8. 0 C
Mr. Fitch	...	,, ,, 26...	8. 0 C

MUNSTER PARK.

Mrs. Cutting	...	Tuesday, May 16...	7.30 A
Mrs. Edwards	...	,, ,, 16...	8. 0 A
Mr. James	...	Thursday, ,, 18...	8. 0 A
Mr. Stiles	...	Sunday, ,, 21...	10. 0 A
Mr. Webb	...	Tuesday ,, 23...	8.30 A
Mr. Button	...	Wednes., ,, 24...	7. 0 A
Rev. W. H. Allen	...	Friday, ,, 26...	7.15 A
Mrs. Cutting	...	,, ,, 26...	7.15 A
Mr. Paul	...	Thurs., June 1...	7.30 A

JUNIOR CLASSES.

Mr. Wakeling	...	Thurs., May 18...	7.15 A
Mrs. Cutting	...	Tuesday, ,, 23...	6.30 A
Miss Bush	...	Thurs., June 1...	6.30 A
Miss Slater	...	Friday, ,, 2...	7. 0 A

Wesleyan Methodist Church.

ORDER

OF THE

Religious Services

IN THE

HAMMERSMITH CIRCUIT

FOR

APRIL, MAY, JUNE,

1899.

Ministers:

WILLIAM J. BROWN, 9, RAVENSCOURT PARK,
HAMMERSMITH, W.

WILLIAM H. ALLEN, 12, DORNCLIFFE ROAD,
FULHAM, S.W.

THOMAS CHOPE, 41, WOLSELEY GARDENS,
CHISWICK, W.

Circuit Stewards:

Mr. JOHN LEAN, 6, Stanley Villas, Rutland Road,
Hammersmith, W.

Mr. JOHN W. BUSH, 54, Tournay Road, Fulham.

Chapel Secretary:

Mr. JOHN BENNELL, 88, Shaftesbury Road,
Hammersmith.

Foreign Missionary Treasurer:

Mr. R. AUSTIN, 379, King Street, Hammersmith, W.

Worn-Out Ministers' Fund Treasurer:

Mr. THOS. MOULLIN, 2, Broomhouse Road,
Fulham, S.W.

Quarterly Meeting Secretary:

Mr. J. W. BUSH, 54, Tournay Road, Fulham, S.W.

Education Secretary:

Mr. C. W. ANDREW, 781, Fulham Road, S.W.

HAMMERSMITH:—

Society Stewards:

Messrs. J. C. WADSON and J. COSSON.

Poor Stewards:

Messrs. F. BUSH and O. VELTOM.

Chapel Stewards:

Messrs. G. JARVIS, T. MITCHELL, L. BARDWELL,
and F. HILL.

CHISWICK:—

Society Stewards:

Messrs. R. DEW and S. DAWSON.

Poor Stewards:

Messrs. C. J. BROWN and E. J. GOODALL.

Chapel Stewards:

Messrs. C. J. BROWN and B. J. ABEL.

MUNSTER PARK:—

Society Stewards:

Messrs. C. W. ANDREW and C. BARLOW.

Poor Stewards:

Messrs. S. G. BURGESS and G. MITCHELL.

Chapel Stewards:

Messrs. T. MOULLIN, A. R. WEBB, and T. MARTIN.

SUNDAY SCHOOLS.

MORNING ... 9.45. AFTERNOON ... 2.30.

The Rev^d F. B. Mount
Baptist Minister.

Mr Mount is pastor of the Wabridge Road Tabernacle,
Bloemfontein Road, Wabridge Road. He settled here in
1891, ~~when~~ he commenced his Baptist ministry in 1885.
The Church has 104 members.

The Sunday school has 330 scholars and
33 teachers.

See continuation on page 129.

St Luke's parish.

Enter west
30
3

work
30
1

Acc^d

Date Lodge
East Acton, W.

June 2. 1899

Dear Sir

I am, & beg to ten-
der to you, my apology.

Your letter of May
12 duly reached me & is now
before me. But when it arrived it
I was ill, & so your request
for an appointment was carefully
preserved for early attention, with
the result that I have troubled
you to write a second time. This
I much regret.

I hardly like you

The Rev^d F. B. Mount
Baptist Minister.

Mr Mount is pastor of
13 Bloemfontein Road, W. bridge
1891. ~~where he~~ commenced his
The Church has 104 members
The Sunday school has
33 teachers.

See continuation on

to come or send so far, for so
small a result as my report will
give.

Our church is but a small
struggling ^{community} ~~work~~, burdened with debt
(a new part of building), & thus un-
able to do much aggressive work.

Of course we have the
usual departments e.g.

Services for preaching the Gospel
(Sittings - about 400 - free)

Widows' meetings
Tract distribution

Benefit (Sick) Societies for men &
Women

Band of Hope

Open-air preaching

Visitation of the sick; with
such transport and as our funds

St Luke's parish.

Enter west
30
3

work
30
1

will allow to our funds as
possibly bestow.

Sunday-schools

You will see therefore
that our church ~~is~~ is very
unfortunate & has in it only the
heroism of earnest desire faithfully
to do, what we think God has
entrusted to us. But you will
surely judge a visit, to be
wondered at.

Yet if you still desire
an interview, can I not call
upon you when next in Town
Probably in the course of a few
days!

Yours truly
Francis B. Mount
Ch. Booth Esq,

Rev. Wm Cullum
Wesleyan Minister

G.A.

Personal Note

The Kensington Circuit.

Persons reached

Buildings used

S^t Matthew's parish.

Order West
30
12

Wm
30
3

47

Rev^d Wm Cullum. Minister of West Kensington
Park Wesleyan Church, Shepherd's Bush Road.

Seen at his residence: 47 Shepherd's Bush Green. W.

Wm Cullum is Supt of the Kensington circuit, which
includes the churches at Warwick Gardens (Dist. 28) and
Shepherd's Bush Road. Warwick Gardens was the head of
the circuit but it has declined & the Supt now
ministers at Shepherd's Bush, the junior minister
Rev C.R. Butcher being pastor at Warwick Gardens.

Wm Cullum has been 37 years in the Wesleyan
ministry. He is a big brawny north countryman
of ~~60~~ or thereabout. High forehead, prominent eyebrows, strong
square jaws. But for his clerical dress, would be
easily mistaken for a well to do farmer.

At Shepherd's Bush Road they get the middle & lower
middle class and they are just opening a Mission
in Blythe Road where they will get the poor people.
A mission had been started & the new premises
were intended to give it room to develop.

Church seats 1000, schoolroom 500 & Mission Room
60.

Persons Employed

Services Held

Social Agencies

Cullum Wesleyan

Paid minister, with voluntary helpers as S. S. teachers & local preachers.

Sunday Services 11 + 6:30. 300 to 400 in morning and 600 in the evening. Many attend both services.

Sunday School. 40 teachers. 300 scholars on books. Average attendance 250. Get a number of poor children from Blake Road.

Large Men's Bible class at 3pm.

Thursday. Preaching service - Very poor 20 to 25.

10 Class meetings. Have fairly good class meetings altho' not more than 25% of the people attend regularly.

Social Agencies include Temperance meetings (80 attendance). Wesley Guild which is waiting dissolution. He found it did not work well here & wishes to revert to a more general ^{form of} society which was displaced by the Wesley Guild.

Temperance work is strong. Have a women's temperance society & these ladies are enthusiastic. Find that the people prefer music. A concert is more popular than a sermon or a lecture.

To make a lecture successful, a very popular man, like Dr. Parker is needed.

Visitation

Charitable Relief

Free Church Council

Church Membership

Bullum Wesleyan

Visitation of sick, also of strangers as far as practicable
All is voluntary. No funds for a lay agent.

Meet the needs of the sick from the Sacramental
fund. Does not find much poverty. Most emergency
grants in sickness.

Is not federated with the Free Church Council.
Could not attend the meetings or be of service to
them. The meetings are held in Hammersmith. "In
any great emergency we should tumble together."

Church membership is 170 and is growing.

The prospects are bright; church is growing in
numbers and financially.

For particulars of Warwick Gardens church see

Book 94 p. 231.

KENSINGTON CIRCUIT PLAN, 1899.

Places and Hours	JUNE.				Ministers and Local Preachers.
	11	18	25		
COLLECT	Sunday Trinity.	3rd Sunday after Trinity.	4th Sunday after Trinity.		Rev. WILLIAM CULLUM, Grange Gardens, 47, Shepherd's Bush Green, W.
MORNING LESSONS ...	iv.	1 Sam. ii.	1 Sam. xii.		Rev. CHARLES ROSSITZER BUTCHER, 38, Melrose Gardens, West Kensington, W.
WARWICK GARDENS ... Kensington, W.	iii.	Acts vii.	Acts x.		Rev. R. W. ALLEN, 26, Edith Road, West Kensington, W.
THURSDAY, Sermon & Prayer Meeting	um	Butcher	Cullum w.		Mr. T. ANTHONY, 43, Westwick Gardens, W.
WEST KENSINGTON PARK ... Shepherd's Bush Road	her h.	Cullum	Butcher w.		Mr. W. J. BACK, 95, Earl's Court Road, W.
TUESDAY	her M.P.*	Cullum q.f.	Supply		Mr. R. M. WHARAM, 35, Melrose Gardens, W.
FRIDAY—Band and Prayer Meeting	her h.	Cullum	Butcher w.		Mr. R. BARRACLOUGH, 27, Cromwell Grove, W.
	um h.	Butcher	Cullum w.		Mr. F. GRADY, Holland Street, Kensington, W.
	aar	Butcher	Cullum		Mr. G. GIBLIN, 7, Woodstock Road, W.
	aar	Cullum q.f.	Wharam		Mr. H. C. WILLIAMS, 57, Bolingbroke Road, W.
					Mr. G. BOND, 24, Stonor Road, W.
					Mr. H. T. ACKLAND, 17, Richmond Gardens, W.
					ON TRIAL.
					Mr. D. W. OWEN, 2, Russell Gardens, W.

Bazaar

to be held at
WEST KENSINGTON PARK,
on
13th, and 16th,
for cost of
£500 for cost of
improvements, also
repairs.

Full is warmly Solicited.

THE
METHODIST CONFERENCE
will meet in
the
Y 18th—AUGUST 3rd,
ROAD CHAPEL.

QUARTERLY VISITATION OF CLASSES.

WARWICK GARDENS.

Leader	Date	Time	Day	Minister	Count
Mr. F. BRADLEY...	Sun.	10.15	June 4	...	2
Mr. J. SAGE ...	Sun.	3.45	May 28	...	2
Miss FLEETWOOD..	Tues.	8.30	"	2	2
Mr. W. J. BACK...	Tues.	8.30	"	30	2
Mr. WHARAM ...	Tues.	8.30	"	30	2
Rev. C. R. BUTCHER	Wed.	3.0	"	10	2
Rev. C. R. BUTCHER	"	8.15	"	10	2
Miss BUTCHER ...	Fri.	8.0	"	12	2

WEST KENSINGTON PARK.

Leader	Date	Time	Day	Minister	Count
Mr. T. ANTHONY....	Sun.	10.15	May 13	...	1
Miss LYTH.....	Mon.	7.30	"	8	1
Mr. T. ANTHONY ...	Mon.	8.0	"	29	1
Mr. WHARAM	Mon.	8.0	June 5	...	1
Dr. E. R. LYTH.....	Tues.	8.30	May 30	...	1
Mrs. ANTHONY.....	Wed.	3.0	"	24	1
Mrs. ANTHONY.....	Wed.	7.30	"	10	1
Rev. W. CULLUM...	Wed.	8.0	May 24	...	1

JUVENILE SOCIETY CLASSES.

Miss ABEL (Girls)..	Wed.	6.45	June 7	...	1
Mrs. BISHOP (Boys)	Fri.	7.0	"	2	1

KENSINGTON WESLEYAN METHODIST CHURCH CIRCUIT PLAN, 1899.

Places and Hours of Services.	APRIL.					MAY.				JUNE.				Ministers and Local Preachers.
	2	9	16	23	30	7	14	21	28	4	11	18	25	
COLLECT	<i>Easter Sunday.</i>	<i>1st Sunday after Easter.</i>	<i>2nd Sunday after Easter.</i>	<i>3rd Sunday after Easter.</i>	<i>4th Sunday after Easter.</i>	<i>5th Sunday after Easter.</i>	<i>1st Sunday after Ascension.</i>	<i>Whit Sunday.</i>	<i>Trinity Sunday.</i>	<i>1st Sunday after Trinity.</i>	<i>2nd Sunday after Trinity.</i>	<i>3rd Sunday after Trinity.</i>	<i>4th Sunday after Trinity.</i>	Rev. WILLIAM CULLUM, Grange Gardens, 47, Shepherd's Bush Green, W. Rev. CHARLES ROSSITTER BUTCHER, 38, Melrose Gardens, West Kensington, W. Rev. R. W. ALLEN, 26, Edith Road, West Kensington, W. Mr. T. ANTHONY, 43, Westwick Gardens, W. Mr. W. J. BACK, 95, Earl's Court Road, W. Mr. R. M. WHARAM, 35, Melrose Gardens, W. Mr. R. BARRACLOUGH, 27, Cromwell Grove, W. Mr. F. GRADY, Holland Street, Kensington, W. Mr. G. GIBLIN, 7, Woodstock Road, W. Mr. H. C. WILLIAMS, 57, Bolingbroke Road, W. Mr. G. BOND, 24, Stonor Road, W. Mr. H. T. ACKLAND, 17, Richmond Gardens, W. ON TRIAL. Mr. D. W. OWEN, 2, Russell Gardens, W.
MORNING LESSONS	Exodus xii. Rev. i.	Num. xvi. 1 Cor. xv.	Num. xx. Luke xviii.	Isaiah lxi. John i.	Deut. iv. Luke xxiv.	Deut. vi. John iv.	Deut. xxx. John vii.	Deut. xvi. Acts ii.	Isaiah vi. Hebrew i.	Joshua iii. John xix.	Judges iv. Acts iii.	1 Sam. ii. Acts vii.	1 Sam. xii. Acts x.	
WARWICK GARDENS Kensington, W.	11.0 3.0 7.0	Butcher E. Cullum E.	Cullum Butcher	Cullum Butcher	Butcher F.M. Cullum F.M.	Cullum Butcher	Cullum Cullum s.	Butcher Butcher	Cullum s. Butcher	Butcher Cullum s.	Cullum Butcher H.	Butcher Cullum	Cullum w. Butcher w.	
THURSDAY, Sermon & Prayer Meeting	8.30	Butcher M.P. Cullum	Butcher H.R. Cullum	Cullum * Butcher	Cullum Cullum	Cullum Supply M.P.	Cullum Supply	Cullum Butcher H.R.	Cullum Butcher	Cullum Butcher M.P.*	Cullum Butcher H.	Cullum Cullum Q.F.	Supply Supply	
WEST KENSINGTON PARK Shepherd's Bush Road, W.	11.0 3.0 6.30 7.30 8.0	Butcher Cullum s. Cullum Cullum M.P.	Cullum Butcher * Cullum H.R. Cullum	Butcher Cullum Butcher Johnstone	Cullum F.M. Butcher F.M. Supply Cullum	Butcher Cullum s. Butcher * Wharam M.P.	Harvey S.S.A. Johnstone S.S.A. Harvey S.S.A. S.S. Meeting Cullum	Cullum s. Cullum Cullum Cullum	Butcher Cullum s Cullum H.R. Cullum	Cullum Butcher Supply Barraclough M.P.	Butcher H. Cullum H. Butcher * Cullum Q.F.	Cullum Butcher Butcher * Cullum Q.F.	Butcher w. Cullum w. Cullum Wharam	

OFFICERS.

Circuit Stewards—Mr. W. J. BACK, 95, Earl's Court Road, W.
 Mr. G. H. GIBBS, 43, Goldhawk Road, W.
 Circuit Missionary Treasurer—Mr. G. H. GIBBS,
 Circuit Treasurer of Worn-out Ministers' Fund—Mr. JACKSON.
 Circuit Chapel Secretary—Mr. T. H. ROBERTS.
 Circuit Quarterly Meeting Secretary—Mr. R. BARRACLOUGH.
 Circuit Local Preachers' Meeting Secretary—Mr. R. M. WHARAM.
 Circuit Temperance Secretary—Mr. E. JOHNSTONE.
 Circuit Twentieth Century Fund Treas. and Sec.—Mr. R. M. Wharam.

<p>WARWICK GARDENS.</p> Society Stewards— Mr. J. RICHMOND, Mr. H. B. MOODY. Poor Stewards— Mr. ASHPOLE, Mr. G. WHARAM. Mr. F. GRADY, Mr. H. E. FUDGER. Sunday School Superintendents— Mr. SAGE, Mr. W. J. BACK. Sunday School Secretary— Mr. SUTTON. Leaders' Meeting Secretary— Mr. J. SAGE. Twentieth Century Fund, Local Secretary: Mr. E. WHITTLETON.	<p>WEST KENSINGTON PARK.</p> Society Stewards— Mr. J. JACKSON, Mr. E. JOHNSTONE. Poor Stewards— Mr. J. B. WEST, Mr. J. FROST. Mr. G. BOND, Mr. W. HUNT. Sunday School Superintendent— Mr. J. B. WEST. Sunday School Secretary— Mr. G. MANCHESTER. Leaders' Meeting Secretary— Mr. T. H. ROBERTS Twentieth Century Fund Local Secretary Mr. G. MANCHESTER.
--	--

Collections, etc.

s Sacrament of the Lord's Supper.
 L Lovefeast.
 * Leaders' Meeting.
 || Special Sermon to Young Men.
 Q.F. Quarterly Feast.
 S.S.A. Sunday School Anniversary.
 F.M. Foreign Missions.
 H. Hospital Fund.
 W. Worn-out Ministers Fund.
 H.R. Signing Historic Roll.
 E. General Education Fund.
 T.S. Trial Sermon.
 M.P. Missionary Prayer Meeting.

NOTICES.

Information regarding PEWS and SITTINGS may be had from the Church Stewards:
Warwick Gardens—Messrs. J. SAGE, G. WHARAM, and STOREY, or the Verger on the premises.
West Kensington Park—Mr. GIBBS and Mr. R. BARRACLOUGH or the Verger, Mrs. ONSLOW, 135, Sulgrave Road, Batoum Gardens.
The Offertories made Sunday by Sunday, excepting when other Collections are specially appointed, go to the Circuit Funds for the maintenance of the Ministry of the Circuit.
The Local Preacher's Meeting will be held at Warwick Gardens, on Friday, June 23rd., at 8.0 p.m.
The Circuit Quarterly Meeting will be held at Warwick Gardens, on Monday June 26th, at 7.30 p.m.

THE
HISTORIC ROLL
 OF THE
TWENTIETH CENTURY FUND,
 Will be brought to Each Church for Signatures,
TWICE EACH QUARTER,
 To the Week Evening Service.

GRAND BAZAAR
 Will be held at
WEST KENSINGTON PARK,
 ON
JUNE 14th, 15th, and 16th,
 To raise £600 for cost of
 Much needed Improvements, also
 URGENT REPAIRS.
 The Support of all is warmly Solicited.
 THE
WESLEYAN METHODIST CONFERENCE
 WILL MEET IN
 LONDON, JULY 18th—AUGUST 3rd,
 AT CITY ROAD CHAPEL.

QUARTERLY VISITATION OF CLASSES.

WARWICK GARDENS.

Leader	Date	Minister
Mr. F. BRADLEY...	Sun. 10.15 June 4 ...	2
Mr. J. SAGE ...	Sun. 3.45 May 28 ...	2
Miss FLEETWOOD..	Tues. 8.30 " 2 ...	2
Mr. W. J. BACK...	Tues. 8.30 " 30 ...	2
Mr. WHARAM ...	Tues. 8.30 " 30 ...	2
Rev. C. R. BUTCHER	Wed. 3.0 " 10 ...	2
Rev. C. R. BUTCHER	" 8.15 " 10 ...	2
Miss BUTCHER ...	Fri. 8.0 " 12 ...	2

WEST KENSINGTON PARK.

Leader	Date	Minister
Mr. T. ANTHONY....	Sun. 10.15 May 13 ...	1
Miss LYTH.....	Mon. 7.30 " 8 ...	1
Mr. T. ANTHONY...	Mon. 8.0 " 29 ...	1
Mr. WHARAM	Mon. 8.0 June 5 ...	1
Dr. E. R. LYTH....	Tues. 8.30 May 30 ...	1
Mrs. ANTHONY.....	Wed. 3.0 " 24 ...	1
Mrs. ANTHONY.....	Wed. 7.30 " 10 ...	1
Rev. W. CULLUM...	Wed. 8.0 May 24 ...	1

JUVENILE SOCIETY CLASSES.

Miss ABEL (Girls)..	Wed. 6.45 June 7 ...	1
Mrs. BISHOP (Boys)	Fri. 7.0 " 2 ...	1

Rev. A. R. Shrewsbury
Albion Cong^l. Church

GLA
29/5/89

Holy Innocents parish.

Inter West 30 / 8
Worth 30 / 2

Rev. Arthur R. Shrewsbury. Minister of Albion
Congregational Church, Dalling Road, Hammersmith, W.
Seen at his residence: 44 Homefield Road, Chiswick.

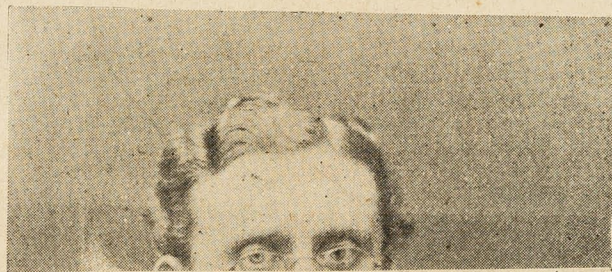
A quiet, nervous man, well cultured & thoughtful,
Mr Shrewsbury has worked persistently here for 18 years. He believes
that the spiritual life is the more important & he has devoted his
energies to the spiritual work of the church. The following from the April
Hammersmith Free Churchman, will give some idea of the man.

"The Palm Branch" and other Verses.



WE are favoured with an early copy of a book of poems, entitled "The Palm-Branch, and other Verses," written by the Rev. A. R. Shrewsbury, the Minister of the Albion Congregational Church, Dalling Road, W.

It may not be generally known that Mr. Shrewsbury was born at Hastings in 1858 and joined the Congregational body at the Old Croft Church, Hastings. He entered the Hackney Congregational College in training for the Ministry in the year 1878, and received an invitation to become the Minister of the Albion Church in London.



The book which he has published contains twenty-one pieces, written between the years 1874 and 1898, and many of them exhibit the true poetic instinct, as may be seen from the following lines which appear in an acrostic at the beginning of the book:—

"Every spark of fond desire
Must be caught from Love's own fire."

Some of his phrases are particularly happy, and remind us of Tom Moore. This is especially so in the line appearing in "The Palm-Branch," in which he speaks of "the bough of life's emerald tree."

We are especially pleased with the ballad entitled "An Angel Child," which, though somewhat solemn, makes an extremely good recitation, and, like "The Master's Last Words" and poems of that kind which have caught hold of the popular heart, is calculated to

THURSDAY, MARCH 9TH.—A largely attended meeting was held on behalf of the London Mission. This Mission carries on a most successful work in the West End of London, under the Rev. Hugh Price Hughes, now President of the Conference; in Central London under the Rev. J. E. Wakeley; in East London under the Rev. Peter Thompson; and in South London

Rivercourt Wesleyan Church.

April 2.—Messrs. Smith and Jones.
" 9.—Messrs. Hobbs and Douthwaite.
" 16.—Messrs. Travis and Saunders.
" 23.—Rev. G. Stanyer.
" 24.—Rev. G. Stanyer.
A very hearty welcome will be given all Rev. G. Stanyer preaches each Wednesday evening. We call special attention to our Sunday School and Band of Hope for the children. There are many children who do not attend any Sunday School. We give such a very cordial invitation to ours.

ARTHUR R. SHREWSBURY.
We glorify Thy grace, oh, Lord!
In all he was, in all he wrought;
Thine instrument at home, abroad,
For conscience and for right he fought,
In every age Thy battles these—
He won Thy people's liberties.
How vast the heritage we claim!
What gratitude our hearts should thrill!
We, fearless, speak a Saviour's Name,
And worship howsoever we will!
But oh! The charter which we boast
Was purchased at no trifling cost.
Almighty God! Whose Spirit's power
Constrained Thy servant thine to be,
Baptize us in this hallowed hour,
That we may prove as loyal as he,
And in our day and sphere may stand
Protectors of our Fatherland

Order best 30/8 Wmk 30/2

Rev. Arthur R. Shrewsbury, Minister of Albion
Congregational Church, Dalling Road, Hammersmith, W.
Seen at his residence: 44 Hornsfield Road, Chiswick.

A quiet, nervous man, well cultured & thoughtful.
Mr Shrewsbury has worked personally here for 18 years. He believes
that the spiritual life is the more important & he has devoted his
energies to the spiritual work of the church. The following from the April
Hammersmith Free Churchman, will give some idea of the man.

**"The Palm Branch" and other
Verses.**



We are favoured with an early copy of
a book of poems, entitled "The
Palm-Branch, and other Verses,"
written by the Rev. A. R. Shrewsbury,
the Minister of the Albion Congrega-
tional Church, Dalling Road, W.

It may not be generally known

that Mr. Shrewsbury was born at Hastings in 1871
and joined the Congrega-
tional body at the Old Cross
Church, Hastings. He entered the Hackney Congrega-
tional College in training
for the Ministry in the
year 1895, and received an
invitation to become the
Minister of the Albion
Church in June, 1896, which
invitation he accepted,
sailing in April, 1897, and
he will, on the 23rd of
this month, celebrate the
eighteenth anniversary of
his ministry.

He comes of a good old
Nonconformist stock, one
of his uncles having been
for over sixty years a Dis-
tinct of the Congregational
Church at Chatham, while
a nephew his immediate re-
lative he has four cousins
in the Methodist ministry.

Mr. Shrewsbury has al-
ways taken a deep interest
in every movement for the
promotion of the true wel-
fare of the community, no partisan politician, yet
keenly interested in real progressive measures. His
ministry has been marked by its devotion to the
exposition of the truths of the Gospel, as meeting all
the needs of man's nature, and affording him clear
indications of the way in which to live for the good of
his fellows and the glory of God. All who know
Mr. Shrewsbury love him for his Christian manliness
and brotherliness. The people here no longer find
that he. May the good Lord continue to bless his
work and grant him many more years of service in
Hammersmith, is the prayer of all his friends.



REV. ARTHUR R. SHREWSBURY.

The book which he has published contains twenty-
one poems, written between the years 1874 and 1897,
and many of them exhibit the true poetic instinct, as
may be seen from the following lines which appear in
an account at the beginning of the book:—

"Every spark of soul flame
Must be caught from Love's own fire."

Some of his phrases are particularly happy, and
remind us of Tom Moore. This is especially so in the
line appearing in "The Palm-Branch," in which he
speaks of "the hough of life's amerald tree."

We are especially pleased with the ballad entitled

"An Angel Child," which,
though somewhat solemn,
makes an extremely good
recitation, and like "The
Mother's Last Words" and
poems of that kind which
have caught hold of the
popular heart, is calcu-
lated to do a great deal of
good.

Probably one of the most
poetic and careful pieces
in the book is that entitled
"Immortality," in which
he breaks out into this
apostrophe:—

"Reason believe! Thou can't
see me
And grasp the infinite;
No loss of time which the
hour
To enclosing life."

We trust Mr. Shrews-
bury will write some more
poetry forthwith, and he
might very well add to
existing hymnology. Very
appropriate is his "Hymn
for the Dedication of an
Organ," in which he says:

"When human fingers vibrate
Our organ melodies,
Remember it is Time is made
The essence must stay."

Some of his poetry is slightly humorous, as will be
seen by "Proposals Negatived;" but most of it is
solemn and heart-searching. We wish for him and
his work, both as Minister and poet, every success, in
the truest sense of the word.

The book is published by Elliot Stock, 62, Patern-
oster Row, E.C., 50s. 6d., and the price is 2s. 6d.
net.

The Church's District
+ People

Buildings used

Persons Employed

Shrewsbury - Congregational

His people are lower middle class with some better off. The district in which they work ~~is~~ is between Dalling Road & the grove, and is occupied almost entirely by working people. Two families to the house as a rule. They get some people from this district and a considerable number of children but cannot touch the very poor - those living 3 families in a house. District has not changed much during the 18 years - always a similar class there.

Of his own people, come in from all round; some from Chiswick, Shepherds Bush. Have moved out. Changes are considerable & of those moving only a small proportion keep up their connection with the church. The bulk have changed within the past 7 years while there are many so uncertain that they do not join.

Church seats 540. Large schoolroom & a number of class rooms. Also a Mission Hall (Cambridge Hall) in Cambridge Road seating ²⁰⁰.

Minister only paid worker. Have over 40 S.S Teachers at Church & Mission. At least 60 bona fide workers in all.

Services held

Little Social work

Visitation

Shrewsbury
Cong^e

ALBION CONGREGATIONAL CHURCH,
DALLING ROAD.

Minister: REV. A. R. SHREWSBURY.

Lord's Day, Morning, 11 a.m.; Evening, 6.30 p.m.
Singing by the Church Choir from 6.15.

The Lord's Supper is observed the First Lord's
Day Evening in each month at 7.45, and at 12.15 after
Morning Worship on the 3rd Sunday in January,
April, July and October. Prayer Meeting after
Evening Service each 4th Sunday in the month.

Sunday School: Morning 9.45; Afternoon 2.45.
Bible Classes for Young Men and Women at 3 p.m.

Teachers' Prayer Meeting 3rd Sunday in the
month, 9.15 a.m.

Teachers' Meeting 2nd Thursday in the month,
8.45 p.m.

Young Peoples' Working Meeting every Monday
Evening, 7 p.m.

The Mutual Improvement Society every 2nd and 4th
Monday from October to April at 8 p.m. The Band
of Hope Tuesday at 6.30 p.m.

The Maternal Society meets on the 1st Tuesday
Evening of each month, 6 p.m.

The Christian Band every Wednesday Evening
Junior Division at 7 p.m. Senior at 8 p.m.

Divine Service every Thursday at 7.30 p.m.
Church Meeting on the Thursday preceding the first
Sunday in each month. Choir Practice each Thurs-
day (Church Meeting Night excepted) at 8.45 p.m.

Prayer Meeting Saturday at 8 p.m.

At Albion Mission Hall in Cambridge Road, a
Service for Children is held every Sunday Evening
at 6.30 p.m. 120 to 130.

Flourishing

Congregation is about the same in morning and evening but Mr D. would not venture to give numbers. Sunday School, 33 teachers, 442 on Books & average attendance 111 and 302.

Social work very little - Band of Hope; Mutual Improvement society

Their district is visited once a month with literature (Magazines etc). Every house, unless they find the people are attending elsewhere, then omit. No regular visitation of the members but visit the parents of the S. S. scholars & Band of Hope children, Also the sick.

Charitable Relief

Co-operation

Drink

Rowdyism in King St

Inadequate Lavatory Accom^{mt}

61
Shrewsbury - Congregational

For relief purposes they have the Sacramental fund. No organised relief work. Find they have enough to do with those they know.

Cordial co-operation amongst the free church but none with the Church of England.

Drink "an awful curse". Has noticed an increase amongst women and young people (13-18) but thinks that the men are more temperate.

The rowdyism and disorderly conduct in King Street, Mr S mentioned specially. Saturday & Sunday nights are the worst. Three or 4 years ago, the rowdyism was very conspicuous and the streets were cleared but the effect was simply a transference further west.

He also commented on the exposed condition & inadequateness of the urinals attached to the various publichouses, mentioning specially one attached to the 'Prince of Wales' & close to the Board School. The total absence of any accommodation for women ~~also~~ is also the indirect cause of the side streets being frequently in an offensive condition.

Local Govt

Church Membership

Shrewsbury Congregational

The local authorities, Mr S thinks, are representative of vested interests and more concerned in retaining things as they are and maintaining themselves in office than in promoting the best interests of the district.

The membership of the Church is now 220. As to the prospects, Mr S. was rather uncertain. The church fluctuated and had varied considerably during his pastorate. They were now "in a season of struggle" ~~so that~~ but they would come out alright.

Of the people on his district, he thought that not more than 12 to 15% at the outside attended a place of worship. At the Cambridge Hall they touch a poorer section of the people than at the church but here it appears to be more through the children than their parents.

Museums in district

Might see Mr Burroughs. L. C. M. Mansion House Museum

He lives in Iffley Road

Also Mr Waitman, Blackhart Lane.

Rev. G. Stanger
Primitive Methodist

The Church District

The People

GHA
31/5/49

Holy Innocent's parish.

Interment $\frac{30}{8}$ work $\frac{30}{2}$

65

Rev. G. Stanger, Primitive Methodist Minister,
Aubrey Villa, Shaftesbury Road East, Hammersmith, W.

Mr Stanger is a fair middle aged man, shrewd, active and with a homely manner & dry humour that enable him to get on good terms with the working folk quickly. He had worked in Wiltshire & Dorset for some years before coming to London.

The Church has a district assigned to it between Dalling Road & The Grove & on the south of Goldhawk Road. In this area, it distributes some 850 magazines monthly.

Some of their people live in this area but generally speaking they only touch these people through their children, who attend the Sunday School. These people are labouring people & artisans with a few families a little better off. They are drawn from all round and are Primitive Methodists by conviction or they would not come the distances some of them do, e.g. Chiswick. Bulk would be working people. "The Primitive Methodists has that glory" e.g. it reaches the working people.

Building & workers

Services Held

Church Membership

Visitation

Stanyer Prim: Methodist

Church holds 300. Have 4 cottages. About 30 workers, including 24 S. S. teachers.

Sunday Services at 11. & 6.45. Congregation about 200. Get their own people in the morning and in the evening make the service evangelistic & draw some of the local people

Sunday School with 250 children and an average attendance of 120. Bible class (3pm) 20 to 40.

Open Air meeting in Dalling Road before the service. Has 3 or 4 ^{workers} distributing handbills & bring some to the services in this way.

Monday Evenings for the People. Entertainment or Service. Always brings in the gospel.

Christian Endeavour Society 20 to 30 members. Visits sick; distributes flowers &c.

Band of Hope. 70 members.

Church membership - 105. Total for Circuit 120.

Have 10 visitors who visit their districts. Mr G. visits his own people, the parents of the scholars & sometimes from house to house. Is always received well

Contrast between Town & Country People

Charitable Relief

Relations of Churches

69
Stanyer - P. Methodist

well but finds it difficult at times to get into the homes. Behind the apparent indifference of the people he finds a real respect for truth and honesty. They in the country the people receive you as a minister. They think you a superior person. In London they do not want to receive you as a minister but as a man "and I think this is a better way to be received".

Have a Sick and Benevolent Funds, the income of which is derived from a tea & collection. They cannot do much as they have a tremendously heavy debt on the church (£4500). Mainly help their own people - need being due to sickness and uncertainty of work. "Help given" should not rob a man of his independence and self respect."

They hold open air services on Tuesdays at Junis Road, Shepherds Bush and are hoping to extend their work in that district.

The usual reply about co-operation through the Free Church Council & the lack of any connection with the Church of England. "With their conception of the priesthood, how can they work with us?"

Drink + Prostitution

Stanger - P. Methodist

Drink a curse in this district - very bad in King Street. Has noticed an increase of the number of girls loitering about since the publichouses since the opening of the variety hall. Street is much rougher on Saturday night. Should not like a child of mine to go down King Street. Police simply move the people on

The Prospects of Christian work are very good. The tendency is upward and it is a right kind of tendency. The question of entertainment is less considered and there is a desire to preach the truth and produce conviction. They are going more and more on the lines of solid evangelization. He aims at giving strength of character and thus producing a lasting influence.

PLAN OF

PLACES.	TIME		
		2	9
HAMMERSMITH—	11	Stanyer	Stanyer
DALLING ROAD.	6½	Stanyer s	Stanyer
Bible Class ...	3	Stanyer	Stanyer
Open-Air ...	6	M. Band	M. Band
Monday, Preaching ...	8	Stanyer	Travis
Tuesday, Band of Hope	7		
„ Y.P.S.C.E. ...	8½	May	Stanyer
FULHAM—	11	Smith	Hobbs
BAYONNE ROAD.	6½	Young	Douthwaite
Wednesday, Bd. of Hope	7	Stanyer	Stanyer
„ Service ..	8	Stanyer	Stanyer
„ Class ...	8½	Stanyer	Stanyer
SHEPHERD'S BUSH—			
TUNIS ROAD.			
Tuesday, Open-Air Ser.	8		

Circuit Preachers' Names and Residences.

- 1 G. STANYER, Aubrey Villa, Shaftesbury Rd. East, Hammersmith.
- 2 C. ALDERMAN, 9, Orchard Road, Shepherd's Bush, W.
- 3 W. SAUNDERS, 205, Ashmore Road, Kilburn.
- 4 J. YOUNG, 181, Greyhound Road, Hammersmith, W.
- 5 H. J. MAY, 164, Percy Road, Shepherd's Bush, W.
- 6 A. HOBBS, 275, Uxbridge Road, W.
- 7 J. TRAVIS, 57, Bassien Park Road, W.

Auxiliaries.

- 8 R. R. BUCKENHAM, 642, King's Road, Fulham, S.W.
- 9 J. NEWELL, 59, Tunis Road, Shepherd's Bush, W.
- 10 F. T. HUGHES, "Woodlands," Station Road, New Barnet.
- 11 H. SALMON, 346, Lillie Road, Fulham, S.W.
- 12 A. BASTIN, 51, Wrotesley Road, Plumstead, S.E.

Mission Bands.

HAMMERSMITH.
President—Rev. G. Stanyer.
Leaders—H. J. May, A. Pettifor.
Secretaries—A. and S. Hare.
 The Local Preachers and D. Norris, F. W. Stocking, Mrs. Palmer, E. Dixon, A. Youngson, B. Lambert, A. Muxlow, A. Hewitt, F. Baker, M. Chadwick, E. Wilkinson, S. Hare, A. Hare, S. Baker, T. Appleton, Pettifor, F. Bird, A. Blackall, A. and F. Gates, A. and R. Huxley, A. Pratt, A. Long, Mrs. Clark, Mr. and Mrs. Evans, J. Kinton, Miss Moore and F. Pettifor.

BAYONNE ROAD.

Leader—Rev. G. Stanyer.
 J. Young, B. Hunt, W. Smith, W. R. Smith, Mrs. Smith, Mrs. Hunt, and others.

NOTICES.

HAMMERSMITH (Dalling Road.)

Meetings for Christian Fellowship are held on Thursdays, at 7.45 p.m. (Rev. G. Stanyer, Leader).

Sittings are Let at 1/6 and 1/- per quarter. Information may be obtained of Mr. A. Youngson, 13, Furber Street.

Sunday School at 10 a.m. and 3 p.m. Superintendents, Mr. E. C. Rawlings and Mr. H. Webb.

Hymnals
at vario
Bible Cl
Sunday,
Marriage
smith,
Marriag
ers,
April 23and
Rev

"THE PRIMITIVE METHODIST,"

THE NEWSPAPER FOR PRIMITIVE METHODISTS (ILLUSTRATED).

Published every Thursday, Price ONE PENNY.

The Profits of the above are devoted to Needy Local Preachers and the Connexion.

Order of any Bookseller, or sent free by post for 1s. 9d. per Quarter, including all Supplements, from the Publisher—

F. H. HURD, Bourne House, Bedford Street, Commercial Road, London, E.

PLAN OF RELIGIOUS SERVICES.

PLACES.	TIME	APRIL.					MAY.				JUNE.			
		2	9	16	23	30	7	14	21	28	4	11	18	25
HAMMERSMITH— DALLING ROAD.	11 6 ³ / ₄	Stanyer	Stanyer	Stanyer	Stanyer	Rev. T. Mitchell	Saunders	Rev. W. Suttle	Stanyer	Stanyer	Stanyer	Stanyer	Rev. M. Sommonds	Stanyer
Bible Class ...	3	Stanyer	Stanyer	Stanyer	Stanyer	Stanyer	Travis	Stanyer	Stanyer	Stanyer	Stanyer	Stanyer	May	Stanyer
Open-Air ...	6	M. Band	M. Band	M. Band	M. Band	M. Band	M. Band	M. Band	M. Band	M. Band	M. Band	M. Band	M. Band	M. Band
Monday, Preaching ...	8	Stanyer	Travis	Stanyer	Stanyer	Stanyer	Hobbs	Lecture	Stanyer	May	Stanyer	Stanyer	Travis	Stanyer
Tuesday, Band of Hope	7													
„ Y.P.S.C.E. ...	8 ¹ / ₄	May	Stanyer	May	Stanyer	Stanyer	Webb	Stanyer	May	Stanyer	Stanyer	Stanyer	Webb	Stanyer
FULHAM— BAYONNE ROAD.	11 6 ¹ / ₂	Smith	Hobbs	Travis	Young	Stanyer	Smith	Young	Douthwaite	Young	Travis SA	Newell	Hobbs	Smith
Wednesday, Bd. of Hope	7	Young	Douthwaite	Saunders	Newell	Stanyer	Young	Stanyer	Buckenham	Travis	Hughes SA	Saunders	Robinson	May
„ Service ..	8	Stanyer	Stanyer	Stanyer	Stanyer	Stanyer	Smith	Stanyer	Stanyer	Stanyer	Stanyer	Stanyer	Young	Stanyer
„ Class ...	8 ³ / ₄	Stanyer	Stanyer	Stanyer	Stanyer	Stanyer	Young	Stanyer	Stanyer	Stanyer	Stanyer	Stanyer	Smith	Stanyer
SHEPHERD'S BUSH— TUNIS ROAD.														
Tuesday, Open-Air Ser.	8													

Circuit Preachers' Names and Residences.

- G. STANYER, Aubrey Villa, Shaftesbury Rd. East, Hammersmith.
- C. ALDERMAN, 9, Orchard Road, Shepherd's Bush, W.
- W. SAUNDERS, 205, Ashmore Road, Kilburn.
- J. YOUNG, 181, Greyhound Road, Hammersmith, W.
- H. J. MAY, 164, Percy Road, Shepherd's Bush, W.
- A. HOBBS, 275, Uxbridge Road, W.
- J. TRAVIS, 57, Bassien Park Road, W.

Auxiliaries.

- R. R. BUCKENHAM, 642, King's Road, Fulham, S.W.
- J. NEWELL, 59, Tunis Road, Shepherd's Bush, W.
- F. T. HUGHES, "Woodlands," Station Road, New Barnet.
- H. SALMON, 346, Lillie Road, Fulham, S.W.
- A. BASTIN, 51, Wrotesley Road, Plumstead, S.E.

Mission Bands.

HAMMERSMITH.

President—Rev. G. Stanyer.

Leaders—H. J. May, A. Pettifor.

Secretaries—A. and S. Hare.

The Local Preachers and D. Norris, F. W. Stocking, Mrs. Palmer, E. Dixon, A. Youngson, B. Lambert, A. Muxlow, A. Hewitt, F. Baker, M. Chadwick, E. Wilkinson, S. Hare, A. Hare, S. Baker, T. Appleton, Pettifor, F. Bird, A. Blackall, A. and F. Gates, A. and R. Huxley, A. Pratt, A. Long, Mrs. Clark, Mr. and Mrs. Evans, J. Kinton, Miss Moore and F. Pettifor.

BAYONNE ROAD.

Leader—Rev. G. Stanyer.

J. Young, B. Hunt, W. Smith, W. R. Smith, Mrs. Smith, Mrs. Hunt, and others.

"THE PRIMITIVE METHODIST,"

THE NEWSPAPER FOR PRIMITIVE METHODISTS
(ILLUSTRATED).

Published every Thursday, Price ONE PENNY.

The Profits of the above are devoted to Needy Local Preachers and the Connexion.

Order of any Bookseller, or sent free by post for 1s. 9d. per Quarter, including all Supplements, from the Publisher—

F. H. HURD, Bourne House, Bedford Street, Commercial Road, London, E.

NOTICES.

HAMMERSMITH (Dalling Road.)

Meetings for Christian Fellowship are held on Thursdays, at 7.45 p.m. (Rev. G. Stanyer, Leader).

Sittings are Let at 1/6 and 1/- per quarter. Information may be obtained of Mr. A. Youngson, 13, Furber Street.

Sunday School at 10 a.m. and 3 p.m. Superintendents, Mr. E. C. Rawlings and Mr. H. Webb.

Hymnals & Anthems may be had of the Minister at various prices.

Bible Class for Young Men and Women every Sunday, at 3 p.m., Rev. G. Stanyer, Teacher.

Marriages.—The Dalling Road Church, Hammersmith, is licensed for the Solemnization of Marriages. Apply to Minister.

COMING EVENTS.

April 23rd.—Special Mission Services. Preacher, Rev. G. Stanyer.

April 30th.—Special Sermons. Rev. T. Mitchell (Connexional Book Steward). Flower Service at 3 in the Afternoon.

May 14th.—Special Sermons. Rev. W. Suttle (of Baldock).

June 11th.—Camp Meeting at 3 o'clock. Rev. G. Stanyer and others.

THE QUARTERLY MEETING

Will be held on Saturday, June 10th, in Dalling Road School Room, at 6 p.m.

FULHAM (Bayonne Road.)

Class Meeting on Wednesdays, at 8.45 p.m.
Sunday School at 10 a.m. and 3 p.m.

COMING EVENTS.

June 5th & 6th—
Sunday School Anniversary.

June 26th—Camp Meeting at 3 o'clock. Speakers, Rev. G. Stanyer, Messrs. May, Travis, and Robinson.

Rev J. Conway.
Presbyterian Minister

GLA
9/6/99

A Scattered Well to do Church

The Membership

St Mary's parish.

Interment 30/6
work 30/2

75

Rev J. Conway. Presbyterian Minister of
St Andrews, 23^a Goldhawk Road. Seen at his
residence: 1 Ravenscourt Square, Hammersmith W.

Mr Conway is a tall cultured man of about 40. Sharp
clearly defined features, Grecian nose, mustache. Dressed in
clerical attire. Came to Goldhawk Road in 1896

The Church is a congregational affair, scarcely
touching in any way the surrounding population.
The people are drawn from a wide area extending
from New Bridge & Gunnersbury on the west to the
West London Extension Railway. Although the boundaries
are not clearly defined nor bear any definite relation
to the church work they recognised ~~to be~~ by the Presbytery
so that no Presbyterian church could be opened in
the district without the consent of the ~~local~~ local Presbytery.
The people are mostly well to do middle class,
steady people with incomes of £600 to £1800 a year.
Have only one poor family.

The church membership is now 280 & is growing
slowly. They do not feel the effects of the migrations in
the district the people being established.

Building used

Services held

No Social Agencies

Bonway - Presbyterian

The Church, a fine stone building, seats 500. School hall & class rooms in addition.

Services on Sunday at 11 & 7. Counted congregation recently for the presbytery - 250 in morning and 285 at night. Average would be 250 to 300. Good many local people in the evening. Mr C. has tried to make the evening service popular.

Sunday School (143 scholars) is mainly composed of the children of their families. Mr C. has a class for the children after the Sunday morning service for study of the "Shorter Catechism". About 30 or 40 attend.

Week-night Service (Wed) . About 50 attend. Get a few of local people from Greenacre Street Rd.

Christian Endeavour (Monday) Average 25 to 30

Bible Class (Monday) About 20.

No Social activities except a Poor People's Supper which has become an institution. About 50 road sweepers, charwomen &c are entertained & given garments. So far as their own people are concerned, the social agencies are at home. They have their Cycle

and

Visitation

Charitable Relief

Relation to other Churches.

Bonway Presbyterian

and Tennis clubs and F.W.C. thought that institutions connected with the church would not succeed.

The district assigned to them by the Free Church Council is visited occasional with religious literature. Other visitation is simply to members of the Church or cases of sickness.

Not much charitable relief is needed and consequently their contributions go to outside charities: hospital collections, a home for motherless children &c. The ordinary cases relieved are those people, who hunt up Scotch ministers in London and appeal to them as Scotchmen. Some are genuine cases but he fears many are ne'er do wells.

Relations with Free churches very friendly but no connection with the Anglican Church. They get a number of Churchmen who are dissatisfied with the ritualistic services. Such people prefer the liturgical services of the Presbyterian churches to those of the other free churches.

"We (e.g. Presbyterian) resent the name of dissenters".

They have a London City Missionary (Mr. Otway) whom they partially support. He has a Hall near Shepherd's Bush Station & comes occasionally to give an account of his work.

The Religious Instruction
of Middle class Children

The Relation of the Church to
its Environment

Conway - Presbyterian

Talking of the religious instruction of middle class children such as those connected with Mr C's church, Mr Conway said that except the Catechism class nothing was done for them. He thought that excepting those children who happened to be living in ~~some~~ homes where daily family prayers were maintained, the children attending the Board schools would probably have a better knowledge of ~~scripture~~ scripture than the children in middle class homes.

Mr Conway seemed to be painfully conscious that the Church was not doing what it might for the people around & occasionally was apologetic for the shortcomings of the ~~the~~ folk. They were too far away to make a united effort. They were "quite comfortable & do not see the poverty" which was evident enough to their pastor. He summed up the matter by saying: "We are a selfish people."

Personally I liked Mr Conway. He is a cultured Christian gentleman, and sees the problems of sin & trouble around him quite clearly but he also sees that he ~~is~~ cannot do anything to alleviate it with the well to do people who are around him.

If he were transferred to a working class church, he would soon make a mark.

Rev. G. W. Pope
Baptist Minister

GLA
June 13/99

The Church Buildings



* they are Gods stewards.

Social Status of People

St Simon's parish

Overseer 30
11
3
work 30

Rev. G. W. Pope 167 Holland Road. W.
Minister of Shepherd's Bush Tabernacle, Shepherd's Bush R.W.

Mr Pope is a tall like man in the 50's. Dark hair, short whiskers and moustache turning grey. Has been here since 1890 and is on the Metro Asylum Board and the Guardians. Entered the ministry in 1878, being trained at Spurgeon's College.

This church is comparatively a new cause. The site has been acquired and the foundations of a large building put in. Upon these an iron building is erected seating 450 + a smaller hall (200), whilst funds for the permanent structure are being collected.

The people are drawn from around Shepherd's Bush. People are attracted and settle there whether Baptists or belonging to other denominations. He finds the denominational tie is very slight with the people. On the other hand he does not believe in undenominational missions. They should be connected with some church. "You cannot win on a negation". The Missions also do not teach them to sue. The moment they become Christians they should be taught.

Bulk of his people are tradesmen. Have some well to do but no rich folks, retired people, some

domestic

Pope - Baptist

domestic servants. Have some poor people, people who are as poor as church mice but hid their poverty. A sprinkling of artizans - these are socialistic, whilst the clerks go bicycling.

Have 25 S.S teachers 6 deacons + a number of other workers. Church membership is 150 + Mrs P. tries to get them to do something.

Services. Sunday at 11 + 7. Better class in morning, about 200 to 250. ~~300~~ 300 to 400 in evening.

Sunday School 230 scholars on Books.

Open air meeting at corner of Shepherds Bush Green.

Week night service, generally small. Can't get the people until 8.30.

Band of Hope -

Finds it very difficult to get meetings on the week evening. Can get a 'Social' occasionally by announcing it well beforehand but to the ordinary meetings they do not get many beyond the retired people. The late closing hour on Saturday has a similar effect on the Sunday morning congregation. Some of the young people come in late, others not at all. Close at 12 pm + then have to make up their

No. of Workers

Church Memberships

Meetings held

Charitable Relief

Visitation

Free Church Council

Hammersmith v. Shepherd's Bush

Pope Baptist

money and have supper so that it is nearly 2 before they get to bed. This is a tradesman's statement of the case to Mr. Pope.

A little relief is given to the poor from the Communion fund & private contributions. Have only a few chronic cases of poverty.

Members and seatholders are visited by a Com^{tee} of ladies. Names are gone over with Mr. Pope.

Free Church Council is not working very well. The rivalry between ~~St~~ Shepherd's Bush & Hammersmith proper may be partly the cause of the churches at this end not entering into the work so well.

The local rivalry between these districts is keen in many ways. The people here talk of the 'Hammersmith people' meaning the residents near Broadway & King Street, whilst the latter think and speak of the 'Shepherd's Bush people.' Mr. Pope thinks the Townhall should not have been built in Broadway - one corner of the parish. The district can only extend to the north towards Wornwood ~~St~~ Scrubs making Shepherd's Bush the natural centre. The district will be very

The 'Church' Influence

Other Religious Agencies

Pope - Baptist

very good in time. All the houses are being filled up & rents rising. Due to the new Central London Rly. which will give direct access to the City. "Becoming a perfect Elephant & Castle district."

The district is strongly high church. The people do not care for the ritualistic services but they like the music and singing. This part of the service appeal to the educated young people. There is also a social element in favour of Church, the Free churches being at a disadvantage, more especially Baptists, who object to infant sprinkling. In candidates for many institutions, one of the first questions is "where were you baptised". A niece of his, a pupil teacher, said to him "Uncle, I wish as a matter of business my parents had had me sprinkled as a baby". She had been debarred one college but succeeded in getting into an undenominational college. "It is Church, Church, Church, everywhere" said Mr Pope.

Of other agencies in the neighbourhood, Mr Pope referred to the Wesleyans & Mr Olway the L.C.M. in favourable terms; Mr Brown at Christ Church Mission was not doing much.

Local Govt.

Drink.

Pope-Baptist

Mr Pope is a guardian of the poor. The recent separation from Fulham was really a political move. They wanted to get a mayor and felt that the link with Fulham would prevent that. He thinks more interest will now be taken in local matters, but does not expect lower rates. There were grievances in the district, due to the distance from the centre. It was a long way for the poor in Latimer Road to go to Fulham Palace Road to fetch their allowances - bread. Some of the old people actually paid others to bring their allowance. An attempt was made to open a relief station near Shepherd's Bush but it was defeated by Fulham people.

Much drinking near Shepherd's Bush Green & little temperance feeling in the neighbourhood. Most of the temperance workers are Good Templars. Think the temperance reformers have made a mistake. They should 'take half a loaf'. They cannot succeed without the aid of the moderate drinkers. On the Asylum Board a vote against the drink in their hospitals was carried but it was by the co-operation of drinkers. The drinkers are the majority & masters. ⁴⁰ Mr Pope believes in a Fabian policy.

Prostitution

Childrens Street life
after School hours

Pope - Baptist

Prostitution around the Green has increased since Mr Pope has been here. Does not think there are many bad houses.

The condition of the children of the working people after school hours Mr Pope thinks is a question that needs serious attention. From his observation as a manager and at V.B. meeting, he believes that most of the children are ruined between the hours of 4 & 9 pm. The mothers send them to school in the morning and do not return home until 8 or 9. The children during the hours after school are mixing with other boys & girls hearing and learning all kinds of evil talk and corresponding action. He thinks that some provision of playing halls ^{is needed} where the children might spend the time until their mother return and obtain tea at a small cost. Practically an extension of the work of the Recreative Schools Assⁿ from one week night a week to every night. He mentioned it specially with regard to the Latimer Road district, and his testimony is similar to that of other witnesses there respecting the precocity in evil of the children in that neighbourhood.

Mr Pope is an able man with decided views on most subjects. He is slowly building up a church in somewhat uncongenial surroundings and should succeed as the neighbourhood changes more. He takes a keen interest in local matters. but altho' this may make him better known I do not think it helps him in his church work. A remark made by a Battersea Minister (Rev Hamilton) to him respecting the attitude of the working men of Battersea to the Churches might I think apply in the case of Mr Pope.

He said " They will cheer me to the echo at their political meetings but they will not have my Christ "

Mr F. Borrowough. L.C.M.
Mansion House Mission

GLA
16/6/99

The District

Visitation

St John's parish.

Older work
30
10
30
3

99

Mr F. Borrowough. L.C.M. 144 Effley Road
Hammer-smith

Mr Borrowough is an elderly man; fair, hair thinning & short beard with tuft of grey. Of medium height, quiet inoffensive type, might be taken for an elderly clerk. Has been here 4 years, previously stationed at Putney.

Mr B's district is bounded on the West by Waterloo Street & Cambridge Road, south by the River; east by Broadway & the Grove, & north by Adil Road. Some of the other missionaries have been removed & he has taken some of their work & his efforts are diffused over a wider area, going as far north as Bembow Road & west to Dalling Road.

In this area he cannot possibly visit from house to house so that his work is practically a regular visitation of the poor streets - Helton, Conville & others on the south of Glenthorne Road and the poor patches near the river. In addition he visits persons scattered over the district with whom he has come in contact, the sick connected with sick clubs, policemen at the section house, stonemasons

The Poor Streets.

Growing Italian Colonies

Building used

Meetings Held

Borough - L.M.

in their yards and the railway men.

The poorest parts in his estimation are Banham Street (poor & rough) Hetton, Colvin & other streets of Glenthorne Road (poor but respectable), poor colonies near Trafalgar Street & the east side of the Bridge Road. In these places Italians are settling with their baked potato cans, ice barrows etc. Also a number of these men, who work ~~on~~ in plaster, brought over he thinks as a result of the plasterers strike as they are quite a new feature in the local life.

Has a Mission Hall in Maizeon House Street - a railway arch fitted up to seat 200 people.

Bible class on Sunday afternoon (Mixed) Service at 7 pm. 60 to 80 in winter but falls off in summer & they hold open air meetings at the corner of the Grove.

Band of Hope & Scripture Union (Monday) about 90 children are members. 60 to 70 attend.

Gospel Meeting on Thursday. small.

Nearly all the people live on the district and come as a result of visitation.

Benefit Societies

Members object to Policemen

Borough-Lcm

Several sick benefit & other clubs meet at the Hall. Of these the largest is the West Hammersmith (see Balance Sheet) with 200 members. The Excelsior with 80 & there is also a branch of the Sons of Temperance with 30 to 40 members.

The West Hammersmith has a rule disqualifying policemen for membership, the reason being that the police surgeons put them off duty for very trifling ailments. They are constantly on the ground of their societies & are regarded as undesirable members. Mr B. says that several societies have a similar rule.

When

WEST HAMMERSMITH
Sick Benefit Society,
HELD AT
LONDON CITY MISSION HALL,
MANSION HOUSE STREET,
HAMMERSMITH, W.

BALANCE SHEET,
FOR
1898.

OFFICERS FOR 1898.

- President
Mr. F. BURROUGHS.
- Trustees.
Mr. W. VINE. Mr. F. S. LATTER.
- Surgeon.
Dr. J. HEPBURN, 3. Bridge Road.
- Treasurer.
Mr. W. VINE.
- Secretary.
FRED. S. LATTER.
- Check Secretaries.
Messrs. H. SAWFORD & C. OLLETT.
- Comm ttee.
F. FISHER
S. ROGERS
H. ROPER
G. PENN
C. DAWSON
W. WOOLFREY
F. GEALL
S. ROGERS
T. ANDREWS.
- Auditors.
W. NEWMAN. T. ANDREWS.

Balance Sheet for 1898.

	£	s.	d.		£	s.	d.
Balance from 1897		0	4	0½			
Interest, P. O. Savings Bank, 1897		1	12	1			
					1	16	1½
Members' Contributions	306	17	3				
Fines	13	4	11				
Contributions to Surgeon	16	1	0				
Death Levies	35	19	0				
					372	2	2
Arrears at close of year—							
Member's Contributions	1	1	5				
Fines	0	12	1				
Contributions to Surgeon	0	6	0				
Death Levies	2	9	0				
					4	8	6
					£378	6	9½

	£	s.	d.		£	s.	d.
Sick Pay—1st Quarter		27	12	0			
2nd		20	16	0			
3rd		13	10	0			
4th		15	0	0			
							76 18 0
Surgeon's Remuneration							16 7 0
Stewards'							2 8 0
Auditors'							0 10 0
Secretary's							9 18 6
Check							3 6 2
Rent of Hall							2 10 0
Printing							2 2 0
Postage and Petty Expenses							1 16 10½
Death Claims—Bro. W. Wills		5	0	0			
" W. Chapman		5	0	0			
" T. Foster		5	0	0			
Mrs. Clark		5	0	0			
							20 0 0
Share Out—190 Members' Full Share at 25/2							
2 at 18/10½							242 4 7
2 at 12/7							0 5 8
Balance carried to 1899							
					£378	6	9½

SICK PAY.

FIRST QUARTER.

	£	s.	d.
Bro. A. Reynolds 4 days		0	8 0
" J. Enever 26		2	12 0
" F. Davey 5		0	10 0
" W. White 3		0	6 0
" A. F. Woolfrey 12		1	4 0
" E. Martin 23		2	6 0
" W. Chapman 58		4	14 0
" W. Eden 18		1	16 0
" J. Cater 13		1	6 0
" R. Thorpe 6		0	12 0
" W. Buckle 8		0	16 0
" A. F. Woolfrey 23		2	6 0
" W. Hare 10		1	0 0
" C. Wills 6		0	12 0
" J. Barnes 5		0	10 0
" H. Edgcombe 22		2	4 0
" W. Evans 11		1	2 0
" J. Brooman 16		1	12 0
" Z. Cox 12		1	4 0
" A. Harbour 5		0	12 0
			£27 12 0

SECOND QUARTER.

Bro. J. Brooman 2 days		0	4 0
" A. Harbour 7		0	14 0
" J. Chatfield 23		2	6 0
" J. Long 22		2	4 0
" J. Enever 15		1	5 0
" H. Simpson 11		1	2 0
" A. Steward 13		1	6 0
" W. James 12		1	4 0
" A. Reynolds 4		0	8 0
" G. Harrington 10		1	0 0
" J. Coplestone 27		2	14 0
" C. Luxon 10		1	0 0
" T. Blackburn 24		2	8 0
" W. Chapman 1		0	1 0
" B. Peden 11		1	2 0
" J. Barnes 6		0	12 0
" W. Wills 7		0	14 0
" J. Peppiatt 6		0	12 0
			£20 16 0

THIRD QUARTER.

	£	s.	d.
Bro. T. Blackburn 6 days		0	12 0
" W. Wills 10		1	0 0
" J. Peppiatt 12		1	4 0
" H. Curtis 22		2	4 0
" A. F. Woolfrey 29		2	2 0
" E. Beckwith 28		2	16 0
" W. Davies 3		0	6 0
" W. Newman 12		1	4 0
" W. Evans 12		1	4 0
" H. Collings 8		0	16 0
			£13 10 0

FOURTH QUARTER.

Bro. W. Evans 2 days		0	4 0
" H. Collings 12		1	4 0
" W. Wills 6		0	12 0
" A. Woolfrey 12		1	4 0
" J. Long 20		1	14 0
" A. Reynolds 3		0	6 0
" A. Steward 6		0	12 0
" W. White 18		1	16 0
" H. Bull 6		0	12 0
" J. Shrubert 5		0	10 0
" A. Harbour 23		2	6 0
" J. Enever 18		1	16 0
" J. Peppiatt 8		0	16 0
" W. Newman 3		0	6 0
" D. Barry 11		1	2 0
			£15 0 0

Examined and found correct—

F. FISHER, }
H. SHORT, } Auditors.

December 16th, 1898.

The People's Religious observances.

The Working Man's Sunday Morn^g

The Women

Borough - L.M.

When he was at Fulham the society there tabooed policemen and gas stokers!

The Churches are well filled by a respectable class of people but very few of the working men go to any place of worship. Hammersmith Bridge and the banks of the river adjacent is the resort of these men on Sunday mornings. Here you may see thousands of working men leaning over the bridge or walking up & down. A few go on to Barnes to get a drink. ^{Several} open air meetings was held at the corner of the Bridge but have been stopped as a result of complaints from the occupants of a newly erected block of flats.

The younger women ^{& girls} are largely employed in factories. This form of employment has increased greatly during the past two years, new factories have been opened & others enlarged. The Incandescent Light Coy. employ a large number. This has caused a great dearth of servants & Mr B. has frequent enquiries but cannot supply servants. Some of these girls attend the Salvation Army but the proportion attending any where is not large. Even mother's meetings are not

The Religious Influences

Drink

Police

Borough- L.M.

largely attended. Most of the children go to Sunday school. Indeed as regards the mass of the people ~~the~~ religious observances Mr B. is pessimistic. He thinks "Hammersmith is the worst place" he knows "for neglect of the things of God".

The two churches (St John's & Holy Innocents) are active and visit a good deal. Of the Free Churches the Baptist (Mr Bennett) is the most lively. The two congregational churches are rather low, Broadway being without a pastor. We can obtain information respecting that church from Mr Evans, 84 Dffley Road. He is a stonemason & the senior deacon. The Salvation Army are making a ^{good} deal of stir & have a strong membership. They do reach the working people, Lockhart Mission Hall, King St. Mr Watts is supt.

Drink increasing amongst women but not amongst men. Many working men abstainers and have been for years even in streets like Parkham St.

Of the police, Mr B. had not a high opinion. He spoke reluctantly and then only in confidence. Three or four are nice christian men but the Inspector (Hunt) is a bad man - lets &c. With the head wrong, cannot expect the humbler members to be good. Police are bribed.

Prostitution

Crime

Poverty & Charity

109
Borough - Lem

Prostitution has decreased in this neighbourhood. District was infested but they were turned out. Rent went down. The Grove was bad but now respectable.

Not much crime. Infants killed by neglect in ~~the~~ Banham St. district.

Not much acute poverty; plenty of work. Most of the cases needing relief are widows or sick folk. They have no funds to relief but do a little indirectly. They have recently given an entertainment for a widow suffering with cancer. Have sent cases to the C. O. S. but has lost faith in it. They enquire a great deal & then tell people they cannot help them.

Mr. B. is a sincere, earnest man but not so hopeful as most of the missionaries: indeed not so hopeful as he ought to be considering the work that is being done. He sees a little encouragement here and there - he told of me one case of 13 related persons being converted at various times over a period of 2 years or so - but he does not think there is any general improvement. The flood of worldliness and pleasure seems to be carrying away a good deal of the ~~the~~ religious impressions of the people.

June 9th. 1855

Interview 30/5 with 30/1

— Interview with Rev. R. D. Shepherd,
Aoken Road, Wesleyan, Hammersmith.

Rev Shepherd is a man of about
40. He is nearing the end of his
three years' term at this church.

The district from which the
church mainly draws is bounded on
the south by Goldhawk Road, on the
north by Uxbridge Road on the west
of Perry Road and on the east of the
fields. Rev S. describes it as a
"country district" with shopkeepers and
clerks in the few well to do streets.
with the exception of Gayford Road which

is poor, drunken and idling, there is not much poverty. In spite of the purchase of laundry work Mrs. S. thinks that the men are an unusually hard working and steady lot, for the most part. The streets about Beckton Road in the north of the district have Mrs. S. thinks always been working class and have not gone down, but he was surprised when he first came to find how many of the apparently one family ~~are~~ to a house streets were really tenanted.

The church has 205- class members. In the evening it is practically full, in the morning nearly so. There are about

Shepherd-Wesleyan

400 children at the Sunday School, and the Hall is used nightly for some form of social work of which the most prominent is a Glee Club for men with about 150 members, few of whom however attend the church.

There is the usual Mission Band which conducts Open Air services. Speaking on this point Mr S. said that there was a tendency to assume that Open Air services were played out partly due to the fact that the Army had rather brought them into contempt: in his opinion they have never really been played in: they are considered far too much as the ground on which the work may be done: the preaching is for

the most part "hopeless David" and the
 singing of the poorest quality: the
 service in fact - as I said or have nothing
 to recommend them except the persons
 of the workers.

Speaking of the neighbourhood Mrs S.
 said that he thought it was on the
 whole favourable ground for Wesleyanism,
 but would be better if it was a
 little richer: still on the whole the
 people are wonderfully "genial and
 friendly and willing." Mrs S. drew a
 comparison with Bethnal Green where he
 was with Dr Stephenson for some time,
 and used to conduct Mission houses in
 Stoke Newington: then the work was almost
 hopeless: practically none came except

Shepherd - Wesleyan

with the hope of getting something: "if anyone wished to see me after a time" said Mr S. "either they asked of me for relief or if they began with spiritual matters it nearly always ended with leaving of some kind"

Of those who come to this church about half Mr S. thinks are Wesleyan & with a training: the other half are non-cons of other sects the denomination is as usual being by work. Very few Mr S. thinks are drawn in from the great outside indifferent population.

Speaking of the Sunday School, Mr S. said he was convinced that a large proportion of the children go to none: his

On our eye corner him of this, and he is sure that the Sunday Schools in the neighbourhood do not provide accommodation for half the children.

In which outside it is our number the Church perhaps spends £30 a year Mr S. spoke of the hatred of the people for the C.O.S.

Of the other churches in the neighbourhood Mr S. did not know much; but he thought that all, whether established or unestablished, were prosperous and well filled.

Mr. S. gave the neighbourhood, with the exception of Gayford Road, an excellent moral character: ~~free~~ ~~free~~ ~~free~~ ^{on the whole} from drunkenness, prostitution and crime.

As to the police he complained that they would take no steps against the publican for ~~selling~~ serving drink to him. He has several times called upon them to their notice but they have done nothing. On one occasion however I tried another detection: he followed a regular soldier into a house and saw him seated on his expositatory with the barman the answer was "you see it's like this: if I refuse to serve him there will be a row: if I give him one glass he will go." Other barmen we may suppose worked on the same principle and eventually the soldier was found in a heap just outside the barman's house.

Shepherd - Wesleyan

~~As to health. There is a good deal of bad drainage, and there has been much diphtheria lately.~~

Mr S. is a capable, sensible, fairly cultured man, rather above the general run of Wesleyan ministers that I have seen.

Young Men's Christian Association,
WYCOMBE HOUSE,
11, THE GROVE, HAMMERSMITH, W.

MOTTO FOR 1899:

"Pray ye therefore the Lord of the
harvest, that he will send forth labourers
into His harvest." MATT. ix., 38.

Prospectus, April to June, 1899.

THE READING ROOM

is supplied with Daily and Weekly Papers, Magazines, &c.,
and is open every Evening from 6.30 to 10.30. (Hon. Sec.
of Reception Committee, Mr. H. JAPES.)

LIBRARY.

Books from the Library (numbering over 770 vols.) can be
obtained any Evening on application to the Librarian.
Chess and various other games are provided.

Young Men are cordially invited to visit the Rooms and
to attend any of the Meetings of the Association.

Minimum Subscriptions.

If between 15 and 20	5s. per Annum.
If above 20	10s. "

St John's parish.

Hammersmith Young Men's Christian Association.

11 The Grove.

Mrs Barrough, the L. C. M. said he worked with the
Y.M.C.A. and gave me the following papers. The Assⁿ occupies
a large private house nearly opposite the S.W. Rly Station.

THE FOURTEENTH
ANNUAL REPORT
OF THE
HAMMERSMITH
Young Men's
CHRISTIAN ASSOCIATION,
For the Year 1898.

WYCOMBE HOUSE, 11, THE GROVE, W.

Printed by
ANDREW CHURCHMAN, 16, KING STREET, HAMMERSMITH.

1899.

Officers

President:

SIR GEORGE WILLIAMS.

Vice-Presidents:

The local Ministers and other gentlemen (for list see Annual Report).

General Committee:

Chairman ... Mr. EDWARD ELLIS.

Mr. GEO. COLE	Mr. T. GRUBB	Mr. G. JOHNSON
„ C. J. T. DADD	„ F. JAPES	„ C. JUSTICE
„ A. ELLIS	„ H. JAPES	„ J. H. LYDALL
„ F. W. FREETH	„ T. C. JARVIS	„ W. T. S. MURR
„ J. GOODLEY	„ D. JENNINGS	

Solicitors:

Messrs. EDWIN SMITH & ALFRED ELLIS.

Hon. Secretaries:

Mr. J. GOODLEY. Mr. HERBERT JAPES.

Bankers:

LONDON & COUNTY, 12, King Street, Hammersmith.

A Meeting for Prayer is held every Sunday morning from 10 to 10.30.

Tract Workers meet for prayer and work at 2.45 on Sundays (Hon. Sec. of Tract Work, Mr. GEO. COLE).

3

SUNDAY.

Bible Class at 3.15 p.m.

Organist - - - - Mr. JUSTICE.

SYLLABUS.

- April 2. Devotional Meeting Mr. Geo. Cole
„ 9. Merciful and Faithful High Priest—Heb. ii., 17
Mr. Japes
„ 16. Bible Reading Dr. Huxley
„ 23. The Knowledge of His Will ... Mr. A. A. Martin
„ 30. Supposing Rev. J. H. Coulson
May 7. A bond servant of Jesus Christ—Rom. i, 1
Mr. Alfred Ellis
„ 14. A Great Commandment Mr. Murr
„ 21. First things First Rev. E. Anderson Scott, M.A.
St. John's, Allen Street.
„ 28. Address Rev. A. R. Shrewsbury
Albion Church, Dalling Road.
June 4. The Witness of our Faith—I John v. Mr. E. S. James
„ 11. The Oneness of Jesus with The Father—John v, 17-29
Mr. Sifton
„ 18. John 3-16 Mr. G. D. Freeman
„ 25. Address Mr. Edwd. Ellis

SUNDAY EVENING.

Gospel Service at 7 (open to both sexes).

April 2.	Mr. Sidders.
„ 9.	Mr. Wheeler.
„ 16.	Mr. A. Force.
„ 23.	Mr. Baber.
„ 30.	Mr. E. Holmwood.
May 1.	Mr. H. Japes.
„ 8.	Mr. W. P. Hunter.
„ 15.	Messrs. Dutton & Wakeford.
„ 22.	Mr. G. Johnson.
„ 29.	Mr. Wakeford.
June 5.	Mr. E. S. James.
„ 12.	Mr. C. Justice.
„ 19.	Mr. E. Ellis.
„ 26.	Mr. G. Cole.

SEASIDE HOLIDAY HOMES.

Seaside homes for rest and recreation (under efficient management and at moderate tariff) at Hazelwood, Ryde, Isle of Wight; Cairns House, Bournemouth; Shaftesbury House, Margate; Steine House, Brighton; Sherwood House, Llandudno; and other places.

MONDAY.

On Tuesdays and Thursdays Members are always in attendance to receive and welcome strangers or enquirers.

APPEAL.

Will Members and friends wait upon God in private daily prayer for His blessing on the work and His help in the financial matters of the Association.

By applying to the Secretaries, Speakers can generally be supplied for Sunday evening or other Services. Good notice and full particulars should in every case be given.

The Secretaries will be at the Rooms each evening from 8 till 10, and will be pleased to see any young man desirous of an interview.

YOUTHS' CLASS, Monday Evenings, 8.15 to 9.15.

	SUBJECT.	SPEAKER.
April 3.	Bank Holiday. No Meeting.	
„ 10.	Magic Lantern	Mr. Knowles
„ 17.	“Be Patient”	Mr. H. Dutton
„ 24.	“Another Homely Chat”	Mr. T. Grubb
May 1.	“The Royal Standard of England”	Mr. A. Ellis
„ 8.	Address	Mr. G. Clark
„ 15.	“Christ the True Vine”	Mr. H. Carter
„ 22.	Bank Holiday. No Meeting.	
„ 29.	“The Good Shepherd”	Mr. Denson
June 5.	Address	Mr. P. H. Ellis
„ 12.	Another object Lesson	Mr. E. Robinson
„ 19.	“Zacchæus”	Mr. W. A. Pamment
„ 26.	“Things worth knowing”	Mr. Mc Kechnie

WEDNESDAY.

Young Men's Bible Class at 8.30 p.m.

Chairman - - - - - Mr. W. T. S. MURR.

Honorary Secretary - - - - - Mr. H. JAPES.

SYLLABUS.

April 5.	Paul's 1st Epistle to Corinthians.		
„ 12.	„	„	„
„ 19.	„	„	„
„ 26.	„	„	„
May 3.	„	„	„
„ 10.	„	„	„
„ 17.	„	„	„
„ 24.	„	„	„
„ 31.	„	„	„
June 7.	Paul's 2nd Epistle to Corinthians.		
„ 14.	„	„	„
„ 21.	„	„	„
„ 28.	„	„	„

“Search the scriptures: for in them ye think ye have eternal life: and they are they which testify of me.” John v. 39.

FRIDAY.

Meeting for Prayer and Study of the International
Sunday School Lesson, at 8.30.

(Open to both sexes.)

Conducted by Mr. ALFRED ELLIS. Hon. Sec., Mr. J. C. BERRY.

SYLLABUS.

Mch. 31.	The raising of Lazarus ...	John xi., 32-45.
April 7.	The anointing at Bethany ...	„ xii., 1-11.
„ 14.	Jesus teaching Humility ...	„ xiii., 1-17.
„ 21.	Jesus the Way, the Truth, and the Life ...	„ xiv., 1-14.
„ 28.	The Comforter promised ...	„ xiv., 15-27.
May 5.	The Vine and the Branches ...	„ xv., 1-11.
„ 12.	Christ betrayed and Arrested ...	„ xviii., 1-14.
„ 19.	Christ before the High Priest ...	„ xviii., 15-27.
„ 26.	Christ before Pilate ...	„ xviii., 28-40.
June 2.	Christ Crucified ...	„ xix., 17-30.
„ 9.	Christ Risen ...	„ xx., 11-20.
„ 16.	The New Life in Christ ...	Col. iii., 1-15.
„ 23.	Review.	

Friends are requested to communicate to the Secretary the names of any young men arriving in the neighbourhood, that he may communicate with them.

Funds are urgently needed for the carrying on of the work. About £150 is required yearly for the General expenses.

Young Men's Christian Association,

WYCOMBE HOUSE, 11, THE GROVE,

HAMMERSMITH, W.

Central Office—Exeter Hall, Strand.

President:

SIR GEORGE WILLIAMS.

Vice-Presidents:

F. A. BEVAN, Esq. Rev. C. B. FOY, M.A. Dr. J. H. GLADSTONE, F.R.S.

Rev. W. FREEMAN GREENE, M.A.

Rev. R. HANDCOCK. Capt. The Hon. C. HOBART HAMPDEN.

J. H. LYDALL, Esq. Rev. R. MACBETH.

Rev. C. MOINET, M.A. Rev. F. B. MONTI. W. BLAIR NEATBY, Esq., M.A.

Rev. Dr. NICHOLSON. Rev. W. PAGE, B.A. Rev. G. W. POPE.

S. GURNEY SHEPPARD, Esq. Rev. A. R. SHREWSBURY. Rev. H. SMALL, M.A.

Rev. W. SUTTLE. REV. G. R. THORNTON, M.A.

Hon. Treasurer:

Hon. Solicitors:

Messrs. EDWIN SMITH & A. ELLIS.

Hon. Sec. of Reception Committee:

Mr. H. JAPES.

Hon. Librarian:

Mr. P. STOKES.

Hon. Auditors:

Messrs. HUNTER & JENNINGS.

Hon. Secs.

Mr. JOHN GOODLEY.

Mr. H. JAPES.

Bankers:

LONDON & COUNTY, 12, King Street, Hammersmith.

Motto for 1898.

“Be strong . . . and work: for I am
with you, saith the Lord of Hosts.”

Haggai ii. 4.

REPORT

For the Year 1898.

It is with deep gratitude to Almighty God that the Committee again complete another year of work on behalf of the young men of Hammersmith.

As anticipated in the last report, it has been found that the new premises are adapted in every respect for the purposes of carrying on the various classes and work connected with the Association.

The principal means upon which the Committee rely for the advancement of the work among young men are Bible Classes such as that held on Sunday afternoons and on Wednesday evenings for the Study of God's Word.

The Sunday Class has been very much blessed, both by the members who attend, the interest taken, and by the addresses given during the year by the Rev. Fleming Shearer, Rev. G. R. Thornton, Rev. C. F. Rainsford, Rev. C. R. Butcher, Rev. T. R. Coulson, Rev. A. R. Shrewsbury, Rev. F. G. Benskin, and others.

It is with very deep regret the Committee deplore the loss by death of two who helped in this useful work—Messrs. Paul and Short, who have both been called to the home of Eternal rest.

The Wednesday evening Bible Class under a very able Leader has continued its work, and has been the means of help and encouragement to the various members. The Study and examination of the Bible being most essential, that many are being instructed to the rightly dividing of the Word of Truth, and prove useful in the service of Jesus. The members desire to record their great appreciation of the Chairman's exposition of the Word of God.

The Committee have still thought it desirable to continue the Evangelistic Services, and also the Gospel Meetings in the open air during the Summer months. The Committee cannot but see that very much blessing has attended the faithful preaching of the Gospel, and that the declaration of God's Message has brought wanderers into the fold. The Y.M.C.A. has combined with the London City Mission in open air work, thus being able to cover a larger field of labour.

Other Classes are carried on as in previous years, the Sunday School Teachers' Preparation Class being well supported.

The Tract Workers are still engaged in circulating illustrated tracts, leaflets, &c., and they thankfully acknowledge grants of tracts received from various societies from time to time.

The Committee desires to thank all those who have helped forward the work of the Association (now in its 14th year) by prayer, sympathy, and money; they are also grateful to the many friends who have helped by giving addresses and Bible readings; also to the two Auditors, Messrs. Hunter and Jennings, for their kind services in auditing the accounts; and to the Secretaries and Officers for their labour of love.

Your Committee would close this short report by quoting from the New Year's Address of their beloved President, Sir George Williams, who says:—

“Our pressing, throbbing need is men—devoted, earnest, “consecrated men; men whose hearts God has touched, and “who are all aglow with love to Him.”

The prayer of the Committee is, that such men may be obtained, and that the blessing of Almighty God may rest upon the Association in all its branches during the year; and to Him be all the praise and glory, for ever and ever.

LIST OF SUBSCRIPTIONS AND DONATIONS.

	Subs.			Dons.		
	£	s.	d.	£	s.	d.
Allen, J. W.	1	1	0			
Andrew, J.	0	5	0			
Archer, Douglas	1	1	0			
Austin, Mrs.	1	1	0			
Barker, Messrs., & Co.	1	1	0			
Bevan, F. A.	5	0	0			
Biddell, J. R.	0	10	0			
Bray, Thos.	0	10	0			
Burgess, F.	0	10	0			
Croft, W. B.	1	1	0			
Courtier, W. G.	0	4	0			
Cruse, F.	1	1	0			
Churchman, A.	0	10	0			
Chalker, F.	0	10	0			
Cole, G.	0	10	0			
Cunningham, H. W.	0	7	6			
Collections, Donations... ..				26	16	9
Dadd, C.	0	5	0			
Dare, R.	1	1	0			
Dutton, H.	0	5	0			
Ellis, E.	0	10	6			
Ellis, P. H.	0	10	6			
Foy, Rev. C. B.	1	1	0			
Freeth, F. W.	1	0	0	0	5	0
Gladstone, Dr.	10	10	0			
Gleeson, H.	1	1	0			
Goodley, J.	0	10	0			
Goodley, Mrs.	0	10	0			
Gore-Lloyd, Mrs.	2	2	0			
Gretton, S. M.	0	5	0			
Grubb, T.	1	0	0			
Harper	0	10	0			
Hawking, J. H.	0	10	6			
Heys, Jones	0	10	0			

	Subs.			Dons.		
	£	s.	d.	£	s.	d.
Holmwood, E.	0	10	0	0	10	0
Hunter, W. P.	0	10	6			
Japes, F.	0	10	0	0	10	0
Japes, H.	0	10	0			
Jarvis, T. C.	1	0	0			
Jennings, D.	1	1	0			
Johnstone, H. H.	1	1	0			
Johnson, G.	0	5	0			
Johnson, C.	0	5	0			
Justice, C.	0	10	0			
Keene, Miss	0	5	0			
Lydall, J. H.	5	3	0			
Mc Kay, Mrs.	1	1	0			
Murr, W. T. S.	1	10	0			
Orton, Mrs.	0	10	0			
Sheppard, T. Gurney	1	0	0			
Sifton, T. E.				2	0	0
Shrewsbury, Rev. A. R.	0	10	6			
Short, J., the Late	2	2	0			
Smith, Edwin	2	2	0			
Stokes, P.	1	1	0			
Stretch, F. E.	0	10	0			
Tavener, R. W.	0	5	0			
Thomson, T. C.	1	0	0			
Wakeford, R. H.	0	5	0			
Wallis, Mrs.	0	10	6			
Wheeler, G.	0	10	0			
Williams, Sir Geo.	1	1	0			
Wyatt, Edwd. W.				0	5	0

BASIS OF ALLIANCE OF YOUNG MEN'S CHRISTIAN ASSOCIATIONS.

'The Young Men's Christian Associations seek to unite those young men who regarding Jesus Christ as their God and Saviour, according to the Holy Scriptures, desire to be His Disciples in their doctrine and in their life, and to associate their efforts for the extension of His Kingdom among young men.'

—(:o:)—

Membership.

That any person shall be eligible for Membership who gives decided evidence of his conversion to God; that he shall be proposed in writing by a Member of the Association, and elected by the Committee after a satisfactory enquiry as to his suitability. Rule 5.

That no Member whose subscription is six months in arrear be allowed to speak or vote at any of the Business Meetings of the Association, nor to make use of the Reading Room or Library in connection therewith. Rule 6.

N.B.—This Rule is not intended to exclude any young men from attending and taking part in the Religious Meetings.

Associates.

That the Committee have power to admit as an Associate, if approved of after enquiry, any young man of good moral character who expresses his adherence to the principles and objects of the Association, and is recommended by a Member or Associate, or by the Pastor whose Church he attends; and such Associate shall have all the privileges of a Member, but shall be ineligible as an office-bearer or Member of Committee, and shall not vote at any Business Meeting of the Association until he has been admitted as a Member. Rule 7.

St. Luke's parish.

over west 30
3
work 30
1

The Rev. F. B. Monti

continued from p. 45.

In view of the foregoing letter, we did not send to Mr. Monti, but accepted his offer to call when passing. He did so on June 22nd 1899, and was seen by J. A.

Uxbridge Road Tabernacle was established in 1891 and Mr. M. has been with it from the start. A temporary iron building has been replaced by schoolrooms which so far, is all that exists of the proposed permanent structure, and has to serve for all purposes. Some day, when funds permit, a church will, it is hoped, be built over the schools, but apparently not just yet.

Mr. M. has known the district a good while, as prior to the existence of this community, he was at Avenue Road Church, which was then (and still should be, he considers) a Baptist Church, tho' now styled undenominational. Here ^{he} was assistant pastor to Mr. Graham, who was a popular preacher, and drew fashionable crowds. Mr. M. mentioned this church casually, to show the change that had come over the locality, saying that at one time many

people came there in carriages, but evidently these were partly people from a distance, who came to the preaching. Although the church, which seats 700, was often crowded, there was no cohesion, no mission work, and little of the ordinary agencies.

So with the decline of the neighbourhood the status of the congregation changed, and with the removal of M^r Graham, rapidly fell off. M^r M was succeeded as co-pastor by Blair Neatby who took sole charge when M^r Graham left and turned it into a sort of Brethren's meeting. Now Neatby has gone, leaving behind a fine building with but a handful of worshippers.

M^r M, does not look at all favourably on what has happened at Avenue Road, but says there was no split off whatever. When he left there he was in hopes of going into the country, but undertook his present charge after much pressure, the church being then just forming and quite independent.

Speaking further of the character of the neighbourhood, M^r M says the original inhabitants

were very well to do, £80 houses being the rule: then came the change to these houses being let in tenements, in several cases to laundresses, who represent about the lowest class here. Now the place is rapidly looking up again, owing, he thinks, to the coming of the railway and to local improvements. Rents are going up 20 or 30% and, in spite of additional building, it is most difficult to get a house.

But there are some roads in Shepherds Bush as bad as anything in Seven Dials and the inhabitants even more difficult to deal with. They are very suspicious of being approached as to spiritual matters, though willing enough, usually, to take anything, you have to give. His church gets hold of a few of these (all churches do) but the mass remain untouched.

Mr M's opinion of this class, even in so far as they get into touch with the churches, is by no means high. They will take all you have to give, "and then go off to another corner of the vineyard, where the grapes are more promising." Mentioned a recent experience of a family who came to join his

church and who were extremely plausible. They were in great evidence at the prayer meeting, and the woman, in particular, quite affected the members with her show of devout earnestness, and the story of her patiently borne troubles. But on enquiry he found that this family had sucked dry every other church in the place, and had come to him as a last resort.

His experience of the Mothers Meeting is very similar. Few will come to the services and there is doubt as to the genuineness of the professions made.

He does not think the Salvation Army is more successful, than the rest. The local corps did big business at first but has declined now.

Open air work generally is hampered by want of good standing room. They are not allowed to preach on the green, and the street corners are noisy and narrow. Feels his own people could do better in this respect if they had a better pitch.

M^r M's congregation consists mainly of good working class, and includes a considerable number of post office employees, foremen &c. He believes that

given a good building (such as that at Avenue Road) they would soon fill it - not because of the parson several of the church members can preach a better sermon than he can, but because they are united and work well together.

M^r M seems to be quite genuine and frank, and inclined to be a bit satirical but good-humoredly so. I should judge him to be rather weak physically and not too energetic. Hardly the man to build up a church under adverse circumstances.

He filled in the form subjoined:-

[A faint, illegible form is visible, likely a questionnaire or report form, with some bleed-through from the reverse side of the page.]

m
et
d
y
lly
d

Francis W. Monk.

Uxbridge Rd. Tchernade

Form B. - Non-conformist Churches.

Life and Labour of the People in London: INFLUENCES.

(Mr. CHARLES BOOTH'S Inquiry.)

QUESTIONS to be asked in each parish as to the work of the Church :-

- (a) What is the general character of the population?
- (b) What portion do the ministrations of the Church touch?
- (c) What persons are employed? (stating duties and whether paid or not)
- (d) What buildings are used? (including mission rooms, schools, and clubs)
- (e) What services or other religious meetings are held, and by whom and by how many attended?
- (f) What Social Agencies are connected with the Church—institutes, societies, clubs, entertainments, meetings, &c.
- (g) What Educational Work is done?
- (h) To what extent are the people visited? (by Ministers or District Visitors)
- (i) What arrangements are there for nursing the sick?
- (j) To what extent is charitable relief given or administered by the Church?

Trade & work's - class
 The above two, with some of the lowest of the second
 The paid workers are the chapel-keepers & the parson. Other workers are volunteers for the church-membership
 The building only i.e. The school-room over which it is proposed to erect the chapel
 Services (2) - Sunday & on Thursday (1).
 Sunday-school morning & afternoon X
 Band of Hope; mother's meeting. Sick Benefit Societies for both men & women.
 except to church-members who may be in need, not by for any church fund. But many give quite liberally when deserving cases are brought to their (individual) notice

General Questions -

- (k) Under what other religious, charitable, or philanthropic influences do the people come?
- (l) What co-operation is there between the Churches and other bodies.

X Open-air meetings on Sunday evening during light & warm days

Remarks with reference to the district are invited on -

- (I) Local Government (including Poor Law administration)
- (II) Police
- (III) Drink
- (IV) Prostitution
- (V) Crime
- (VI) Marriage
- (VII) Thrift
- (VIII) Health
- (IX) Housing and Social Condition generally

A mighty evil in our neighbourhood.
 Scarcely neglected by the work's - classes

Parish Hammersmith, Uxbridge Rd. District.

[Where possible, a comparison should be made between Past and Present.] X

NOTE - It is not intended that this Form should be filled up, but it may be found useful for making notes preparatory to an interview.

X: Satisfying of this in an interview this morning (June 21. 1888)

Monti-Baptist

Not abstracted

Jan. 25th 1900

Interview with Father White,
Holy Trinity, Brook Green.

Father White is an old man,
over 70 I should say, and showing
signs of fullness. He has a fine
head and a beautiful, sweet, tender
grave face: a dignified and courteous
manner. It was a surprise to find
a ~~man~~ man of such essential respect
in appearance and manner more often
than not dropping his θ 's. He is
an Englishman: and I suppose it is
owing to the fact that most priests
are Irish that one does not often
notice the dropped θ , for probably few of
them come from the θ pronouncing class.

The parish is bounded by Gold Bank Rd. on the north, and on the east, south and west by the Metropolitan and District railways.

The P.C. population is about 3000, more rather than under: of these about 2000 are poor Irish and Irish Cockneys: there are gathered mainly in Brook Green Place (where there are 400 or 500 of them) and in Montague St. and the poor courts and streets around it. The remaining 1000 are of the middle class: there are now none who are wealthy though there were in the past.

The number who keep their Eastern Districts is about 1500, which allowing for young

children is a very fair percentage."

All the Sunday Schools are about 1200.
Almost without exception the children
are in the schools: this applies to
middle classes as well as poor: as
there are High, Middle, and elementary
schools.

Father White has three priests
under him: rather oddly & they are
all English, for he complained of the
difficulty almost the impossibility for
an Englishman of dealing with the
Irish: "they will never gather round
an Englishman," he said "they expect
one to be a radical politician and Home
Ruler." (I dare say this is true, & but
at any rate Father White I think lacks

sympathy with the Irish temperament).

The most distinctive feature in the work of the parish is that done by the Sisters of the Sacred Heart Convent, when there are 30 hours who have "gathered together about 100 of the Mothers and done untold good among them": they also have a meeting for girls and young women. "This work ~~among~~ among the women" said Father W. "is especially valuable as it is work which it is neither possible nor wise for priests to undertake." The Convent of the Sacred Heart is a recent institution in the parish: for some reason Cardinal Manning had a dislike

to the order, and would not allow the
sisters in his diocese.

There is a club for boys; but
"it has not been a success; they
want more excitement than we are
prepared to give them." But on the
whole Father W. thinks that "our
boys do not lose the faith."

The ~~poor~~ of R.C. poor of the
parish are "wretched beggars and cadgers"
and altogether much less independent
than the poor of disson from in the
city when Father W. has been in the
past. There is no systematic relief,
but that the beggars do not go empty-
away is shown by the statement that
the life of the priests is made a

burden to them by the beeping. Not only do their own people attack them, but the Hottentots also find their way here.

The Catholic cause is gaining in numbers in Hammer Smith but mainly by conversions among the middle class and of natural growth: there has been no immigration of poor Catholics: indeed they were more numerous when the mission was started 50 years ago than now.

There is the usual considerable number of mixed marriages: but Father W. does not report them. "Though some priests will tell you the contrary" he said, "we gain by them rather than

loss.

On the whole Father W. is satisfied with the position of Catholicism in the parish. "We are looked upon as" he said "and I think are a privileged parish: we have a sufficient staff and splendid buildings: and we have thrown out three or four offshoots in the past."

On general points Father W. noted the trouble drinking among his own people, the cause of all their poverty: it is quite common for a man earning good wages to give his wife 8/ or 10/ a week and spend the rest on drink and pleasure.

Brook Green was mentioned as "not fit for decent people to walk on at night."

