

68  
( )

# CENSUS

OF THE  
**EUROPEAN OR WHITE RACES**

OF THE  
UNION OF SOUTH AFRICA  
1918.

**PART VIII.—DWELLINGS.**

To be Presented to Parliament.

# CENSUS

VAN DE  
**EUROPEES OF BLANKE BEVOLKING**

VAN DE  
UNIE VAN ZUID AFRIKA  
1918.

**DEEL VIII.—WONINGEN.**

Te worden aangeboden aan Parlement.

Price 5s.

CAPE TOWN:  
CAPE TIMES LIMITED, GOVERNMENT PRINTERS,  
1920.

[U.G. 55—1920.] [S.P. 10H.]

Cost of Printing  $\begin{matrix} £ & s. & d. \\ 243 & 5 & 0 \end{matrix}$

B.3/8931.1100.8.20.  
C.T. Ltd.—B3192.



SALE OF GOVERNMENT PUBLICATIONS

THE following Government Publications in addition to Blue Books and Papers, printed by order of Parliament are obtainable at the Government Printing and Stationery Department, Good Hope Hall, Bouquet Street (P.O. Box 28), Cape Town. Cheques, Money Orders or Postal Notes should be made payable to the Superintendent of Printing and Stationery. Printed lists will be sent post free on application. Post free in South Africa. Orders must be accompanied by remittance, which may be sent by Free Money Order, payable to "Revenue" and obtainable at any Post Office.

A. D. SKEA  
Superintendent.

Goevernements Drukwerk en Schryfbehoeften Kantoor,  
Kaapstad, Kaap de Goede Hoop.  
9th April, 1920.

VERKOOP VAN GOEVERNEMENTS PUBLICATIONS.

DE volgende Goevernements Publicaties, behalve de Blauw Boeken en Papieren gedrukt op last van 't Parlement, zijn te krijgen in het Goevernements Drukwerk en Schryfbehoeften Kantoor, Goede Hoop Zaal, Bouquet Straat (Post Bus 28), Kaapstad. Cheques, Geld Order of Post Noten moeten betaalbaar gemaakt worden aan de Opziener van Drukwerk en Schryfbehoeften. Gedrukte lijsten zullen postvrij worden gezonden op aanvraag. Post vrij in Zuid Afrika. Met Bestellingen moet het geld samengestuurd worden, hetgeen kan worden gezonden per Vrije Geld Order, betaalbaar aan "Revenue" en te krijgen in enig Postkantoor.

A. D. SKEA,  
Opziener.

Acts of Parliament, Cape Province.		Price.		Description	Price. s. d.
Octavo. s. d.	Foolscap. s. d.				
1861	2 6	—	—	Letters Despatched, Vol. 1, 1652-1662	5 0
1862	2 0	—	—	Do. do. do. Bound	4 0
1863	2 0	—	—	Do. Vol. 2, do. Bound	5 6
1865	3 6	—	—	Do. do. do. do. Bound	4 6
1866	2 0	—	—	Do. do. 3, do. Bound	7 6
1867	2 0	—	—	Do. do. 1696-1708 Bound	3 6
1868	2 0	—	—	Resolutions (Dutch), 1652-1662, Bound	4 8
1879	2 0	1 6	—	Do. do. do. Bound	3 8
1880	—	1 6	—	Slachters Nek Papers, English	10 0
1881	—	1 6	—	Do. do. Dutch	7 8
1882	—	—	—	Requests (Memorials) 1715-1806, Vol. 1A-E	—
1883	2 6	—	—	(Cloth)	6 8
1884	2 0	2 6	—	Do. do. do. (Paper)	5 8
1885	2 0	—	—	Do. do. do. Vol. II, F-O	6 8
1886	2 0	—	—	Do. do. do. (Cloth)	6 8
1887	2 0	—	—	Do. do. do. (Paper)	—
1888	3 6	—	—	Base Metal Resources of the Union of South Africa, 1919 (Dr. Versfeld)	1 0
1889	4 6	—	—	Basutoland Records, Vol. 2, 1853-1861	10 6
1890	—	—	—	Do. Vol. 3, 1862-1868	—
1891	2 0	—	—	British Bechuanaland Proclamations, Vol. 1, 1885- 1893 (Ward)	10 8
1892	3 0	—	—	Do. do. do. Vol. 2, 1893- 1898 (Ward)	10 8
1893	2 6	—	—	British (Afraria), Laws of, 1869	5 6
1894	2 6	—	—	Cape Divisional Council, Report and Evidence of Commission on	7 6
1895	2 6	—	—	Census Report, with Annexures, 1904	5 0
1896	2 6	—	—	Commerce and Industries Commission, Minutes of Evidence of the, (U.G. 9-13)	6 6
1897	2 6	—	—	Companies Act No. 25, 1892	1 6
1898	2 6	—	—	Do. Do. Amendment Act No. 8, 1906	0 4
1900	2 6	—	—	Criminal Procedure Act 31, 1917 (8vo.)	3 6
1902	1 3	—	—	Criminal Procedure Manual of (Cloth)	10 0
1903	1 3	—	—	Customs Union Tariff	5 0
1905	3 6	—	—	Do. do. do. (Amendment)	0 3
1906	3 6	—	—	De Extraordinis Criminibus 1893	1 0
1907	2 6	—	—	Deeds Registries Act 13, 1918 (8vo.)	1 0
1908	3 6	—	—	Delimitation Commission, Report of the 1919 English or Dutch (U.G. 58-19) each, nett	1 6
1909	3 6	—	—	Divisional Councils, Ordinance relating to E. or D.	1 0
1910	—	—	—	EDUCATION PAMPHLETS:	—
1911	—	—	—	1. Elementary School Course	—
1912	—	—	—	2. Training and Examination of Teachers 1919	0 9
1913	—	—	—	3. School Buildings	1907 0 8
1914	—	—	—	4. Instructions regarding Attendance, Regis- tration and Inspection	1909 0 3
1915	—	—	—	7. Examination on Papers, 1909, 1911, 1912, 1913, 1914 and 1918	0 6
1916	—	—	—	9. Good Service Allowance and Pensions, 1915	0 3
1917	—	—	—	10. Manual Training or Girls (Needle- work)	—
1918	—	—	—	13. Grants to Schools	—
1919	—	—	—	15. Kindergarten	1905 0 2
				17. Education Office Library Catalogue	1902 0 6
				18. School Libraries	—
				Abstract of Debates of Council of Policy at the Cape, 1651-1897 (Theal)	2 6
				A Brief Guide to the Cape Archives, 1652-1806 (Paper)	2 6
				(C. Graham)	—
				Botha (Cloth)	5 6
				ARCHIVES OF THE CAPE OF GOOD HOPE (Leibbrandt)	—
				Journal, 1662-1670, Bound	5 6
				Do. do. do. do. do. Bound	4 6
				Do. do. do. do. do. Bound	4 6
				Do. 1671-1676, Bound	5 6
				Do. do. do. do. do. Bound	4 6
				Do. do. do. do. do. Bound	4 6
				Letters Received, Vol. 1, 1649-1662, Bound	4 6
				Do. do. do. do. do. Bound	3 0
				Do. Vol. 2, 1643-1662, Bound	9 6
				Do. do. do. do. do. Bound	7 5

Also obtainable in Dutch, at 1/6 each.

Separate Acts for recent years are also obtainable.

# CENSUS

OF THE

## EUROPEAN OR WHITE RACES

OF THE  
UNION OF SOUTH AFRICA  
1918.

### PART VIII.—DWELLINGS.

To be Presented to Parliament.

# CENSUS

VAN DE

## EUROPEES OF BLANKE BEVOLKING

VAN DE

### UNIE VAN ZUID AFRIKA

#### NOTE.

The Census Tables are being issued in parts only, and this copy should be kept for reference in its present form or for binding with other parts later. No bound volume of the complete set will be issued.

#### OPMERKING.

De Census tabellen worden alleen in afzonderlijke delen uitgegeven en dit eksemplaar moet voor raadpleging in zijn bestaande vorm worden gehouden of kan later met andere delen gebonden worden. Geen gebonden Volumes van het gehele stel zullen worden uitgegeven.



Government Printing and Stationery Office,  
Cape Town, Cape of Good Hope,  
9th April, 1920.

SALE OF GOVERNMENT PUBLICATIONS

THE following Government Publications, in addition to Blue Books and Papers, printed by order of Parliament are obtainable at the Government Printing and Stationery Department, Good Hope Hall, Bouquet Street (P.O. Box 28) Cape Town. Cheques, Money Orders or Postal Notes should be made payable to the Superintendent of Printing and Stationery. Printed lists will be sent post free on application. Post free in South Africa. Orders must be accompanied by remittance, which may be sent by Free Money Order, payable to "Revenue" and obtainable at any Post Office.

A. D. SKEA  
Superintendent.

Goevernements Drukwerk en Schryfbehoeften Kantoor,  
Kaapstad, Kaap de Goede Hoop,  
9th April, 1920.

VERKOOP VAN GOEVERNEMENTS PUBLICATIES.

DE volgende Goevernements Publicaties, behalve de Blauw Boeken en Papieren gedrukt op last van 't Parlement, zijn te krijgen in het Goevernements Drukwerk en Schryfbehoeften Kantoor, Goede Hoop Zaal, Bouquet Straat (Post Bus 28), Kaapstad. Cheques, Geld Order of Post Noten moeten betaalbaar gemaakt worden aan de Opziener van Drukwerk en Schryfbehoeften. Gedrukte lijsten zullen postvrij worden gezonden op aanvraag. Post vrij in Zuid Afrika. Met Bestellingen moet het geld samengestuurd worden, hetgeen kan worden gezonden per Vrije Geld Order, betaalbaar aan "Revenue" en te krijgen in enig Postkantoor.

A. D. SKEA,  
Opziener.

Acts of Parliament, Cape Province.	Price.		Letters Despatched, Vol. 1, 1652-1662.	Price. s. d.
	Octavo. s. d.	Foolscap. s. d.		
1861	2 6	—	Do. do. do. Bound ...	5 0
1862	2 0	—	Do. Vol. 2. do. Bound ...	5 0
1863	2 0	—	Do. do. do. Bound ...	4 6
1865	3 6	—	Do. do. 3. do. Bound ...	7 6
1866	2 0	—	Do. do. 1696-1708 Bound ...	3 6
1867	2 0	—	Resolutions (Dutch), 1652-1662, Bound ...	4 0
1868	2 0	—	Do. do. do. Bound ...	3 0
1879	2 0	1 6	Slachters Nek Papers, English ...	10 0
1880	—	1 6	Do. do. Dutch ...	7 0
1881	—	1 6	Requesten (Memorials) 1715-1806, Vol. 1A-E (Cloth) ...	6 6
1882	—	—	Do. do. do. (Paper) ...	5 6
1883	2 6	—	Do. do. do. Vol. II F-O (Cloth) ...	6 6
1884	2 0	—	Do. do. do. (Paper) ...	—
1885	2 0	—	Base Metal Resources of the Union of South Africa, 1919 (Dr. Versfeld) ...	1 0
1886	2 0	—	Basutoland Records, Vol. 2, 1863-1861 Theal ...	10 6
1887	3 6	—	Do. do. Vol. 3, 1862-1868 Theal ...	—
1888	4 6	—	British Bechuanaland Proclamations, Vol. 1, 1885-1893 (Ward) ...	10 6
1889	—	—	Do. do. do. Vol. 2, 1893-1898 (Ward) ...	10 6
1890	2 0	—	British (Afraria, Laws of, 1869 ...	5 6
1891	2 0	—		
1892	3 0	—		
1893	2 6	—		
1894	2 6	—		
1895	2 6	—		
1896	2 6	—		
1897	2 6	—		
1898	—	—		
1900	2 6	—		
1902	1 3	—		
1903	1 3	—		
1905	3 6	—		
1906	3 6	—		
1907	2 6	—		
1908	3 6	—		
1909	3 6	—		

Also obtainable in Dutch, at 1910-11 Union Acts of Parliament,  
1912 " "  
1913 " "  
1914 " "  
1915 " "  
1916 " "  
1917 " "  
1918 " "  
1919 " "

Separate Acts for recent years  
Abstract of Debates of Council of P 1651-1887 (Theal) ...  
A Brief Guide to the Cape Archives,  
Botha (Cloth) ...  
ARCHIVES OF THE CAPE OF GOOD HOPE  
Journal, 1662-1670, Bound  
Do. do. Stitched  
Do. 1671-1676, Bound  
Do. do. Stitched  
Letters Received, Vol. 1, 1648  
Do. do. do.  
Do. Vol. 2, 1649-1662  
Do. do. do.

NOTE  
The Census Tables are being issued in parts only, and this copy should be kept for reference in its present form or for binding with other parts later. No bound volume of the complete set will be issued.

OPMERKING  
De Census tabellen worden afgeleverd in afzonderlijke delen uitgegeven en dit exemplaar moet voor toekomstige gebruik in zijn bestaande vorm worden gehouden of kan later met andere delen gebonden worden. Geen gebonden volume van het gehele stel zullen worden uitgegeven.

# CENSUS

OF THE

## EUROPEAN OR WHITE RACES

OF THE  
UNION OF SOUTH AFRICA  
1918.

### PART VIII.—DWELLINGS.

To be Presented to Parliament.

# CENSUS

VAN DE

## EUROPEES OF BLANKE BEVOLKING

VAN DE

### UNIE VAN ZUID AFRIKA

1918.

### DEEL VIII.—WONINGEN.

Te worden aangeboden aan Parlement.

CAPE TOWN:  
CAPE TIMES LIMITED, GOVERNMENT PRINTERS.  
1920.

[U.G. 55—1920.] [S.P. 10H.]

B.38931.1100.8.20.  
C.T. Ltd.—B3192.



2

CENSUS TABLES—1918.

CONTENTS : PART VIII.—DWELLINGS.

	PAGE
TABLE I.—Number of Dwellings in Urban Areas, classified according to the number of living rooms, showing the number of occupants in (i) Private Dwellings, (ii) Other than Private Dwellings, and (iii) All Dwellings Union and Provinces ..	4
TABLE II.—Number of Private Dwellings under headings "Owned by Occupier" and "Not owned by Occupier" in Urban Areas Union and Provinces ..	7
TABLE III.—Number of Occupants in all Dwellings in the principal Urban Areas of the Union grouped in seven Geographical Divisions ..	8
TABLE IV.—Number of Private Dwellings in the principal Urban Areas of the Union, grouped in seven Geographical Divisions. ....	10
TABLE V.—Number of Rented Dwellings in the principal Urban Areas of the Union, grouped in seven Geographical Divisions ..	12
TABLE VI.—Number of Dwellings in the principal Urban Areas of each Province ..	14
TABLE VII.—Number of Occupants of Dwellings in the principal Urban Areas of each Province ..	15
TABLE VIII.—Rentals of Dwellings in the principal Urban Areas of each Province ..	17
TABLE IX.—Number of Private Dwellings occupied by Europeans classified according to the monthly rental, and the number of living rooms in the principal Urban Areas of the Union ..	19
TABLE X.—Classification of Private Dwellings occupied by Europeans according to Materials of which outer walls (excluding foundations) are built in the principal Urban Areas of the Union, grouped in seven Geographical Divisions ..	33
TABLE XI.—Number of Dwellings of various descriptions occupied by Europeans in the principal Urban Areas of the Union, grouped in seven Geographical Divisions ..	35
TABLE XII.—Numbers and percentages of Private Dwellings under headings "Owned by Occupier" and "Not Owned by Occupier" in Urban and Rural Areas, Union and Provinces ..	37

*Note.*—The rents specified in the above mentioned tables represent the average rents of all private dwellings of 3 to 6 rooms occupied by Europeans, accounted for on the Census forms relating to the various towns irrespective of occupations of householders, locality, or materials of which the houses are constructed. The figures are therefore not strictly comparable with those obtained from the special rent censuses which are confined to houses of ordinary size in which the bulk of the population reside.

3

CENSUS TABELLEN—1918.

INHOUD : DEEL VIII.—WONINGEN.

	BLADZ.
TABEL I.—Aantal en percentage van woningen in Stedelijke Gebieden geklassificeerd volgens het aantal woonkamers, aantonende het aantal en percentage van bewoners in (i) Private Woningen, (ii) Woningen anders dan Private, (iii) alle Woningen, Unie en Provincies ..	4
TABEL II.—Aantal Private Woningen onder de hoofden, "Eigendom van Bewoner" en "Niet Eigendom van Bewoner" in stedelijke gebieden, Unie en Provincies ..	7
TABEL III.—Aantal Bewoners in alle Woningen in de voornaamste Stedelijke Gebieden van de Unie gegroepeerd in zeven Aardrijkskundige Afdelingen ..	8
TABEL IV.—Aantal Private Woningen in de voornaamste Stedelijke Gebieden van de Unie gegroepeerd in zeven Aardrijkskundige Afdelingen ..	10
TABEL V.—Aantal verhuurde Woningen in de voornaamste Stedelijke Gebieden van de Unie gegroepeerd in zeven Aardrijkskundige Afdelingen ..	12
TABEL VI.—Aantal Woningen in de voornaamste Stedelijke Gebieden van elke Provincie ..	14
TABEL VII.—Aantal Bewoners van Woningen in de voornaamste Stedelijke Gebieden van elke Provincie ..	15
TABEL VIII.—Maandelijke huur van Woningen in de voornaamste Stedelijke Gebieden van elke Provincie ..	17
TABEL IX.—Aantal Private Huizen bewoond door Blanken geklassificeerd volgens de maandelijke huur, en het aantal woonkamers voor de voornaamste Stedelijke Gebieden van de Unie ..	19
TABEL X.—Private Woningen bewoond door Blanken geklassificeerd volgens de materialen waarvan buiten muren (uitgesloten fundament) worden gebouwd, in de voornaamste Stedelijke Gebieden van de Unie gegroepeerd in zeven Aardrijkskundige Afdelingen ..	33
TABEL XI.—Aantal Woningen van verschillende soorten bewoond door Blanken in de voornaamste Stedelijke Gebieden van de Unie gegroepeerd in zeven Aardrijkskundige Afdelingen ..	35
TABEL XII.—Aantal en percentages van Private Woningen onder hoofden "Eigendom van Bewoner" en "Niet Eigendom van Bewoner" in Stedelijke en Landelijke Gebieden Unie en Provincies ..	37

*Opm.*—De huurprijzen in Bovengenoemde tabellen gespecificeerd vertegenwoordigen de gemiddelde huurprijzen van alle private woningen van 3-6 kamers door Blanken bewoond, opgegeven in de Censussvormen van de verschillende steden, zonder in achtneming van lokaliteit, de bedrijven van bewoners of de materialen, waarvan de huizen zijn gemaakt. De cijfers zijn daarom niet volstrekt vergelijkbaar met die, verkregen van de speciale huishuur census, welke betrekking hebben op huizen van gewone grootte, waarin de massa's van de bevolking gehuisvest is







DWELLINGS—URBAN AREAS.—TABLE I. (continued).

Number of Rooms including Kitchens, Bathrooms, Pantries, Shops and Offices).	Cape of Good Hope. Kaap de Goede Hoop.				Natal.				Transvaal.				Orange Free State. Oranje Vrijstaat.				Union of South Africa. Unie van Zuid Afrika.			
	Dwellings. Woningen.		Occupants. Bewoners.		Dwellings. Woningen.		Occupants. Bewoners.		Dwellings. Woningen.		Occupants. Bewoners.		Dwellings. Woningen.		Occupants. Bewoners.		Dwellings. Woningen.		Occupants. Bewoners.	
	Num-ber.	Per cent.	Num-ber.	Average number per dwelling.	Num-ber.	Per cent.	Num-ber.	Average number per dwelling.	Num-ber.	Per cent.	Num-ber.	Average number per dwelling.	Num-ber.	Per cent.	Num-ber.	Average number per dwelling.	Num-ber.	Per cent.	Num-ber.	Average number per dwelling.

(iii) ALL DWELLINGS.

1	1,348	2.40	3,243	1.13	2.41	178	1.52	318	0.49	1.79	2,631	4.73	5,535	4.11	1,037	2.05	2.64	4,530	3.42	10,183	1.48	2.24	
2	4,149	7.39	15,492	5.40	3.73	424	3.63	1,329	2.23	3.93	1,557	13.57	27,591	39.70	74,591	21.97	4.18	12,533	9.42	49,183	7.14	3.92	
3	10,332	18.40	45,577	16.32	4.86	1,840	15.87	12,961	19.83	4.55	16,000	28.84	81,124	114.11	11,141	21.97	4.82	30,256	22.73	135,384	19.64	4.47	
4	14,723	26.19	58,443	21.06	5.05	3,203	27.41	15,868	24.28	4.96	6,840	59.28	37,570	53.44	7,875	15.43	5.45	35,727	26.56	176,753	25.61	4.95	
5	16,657	29.41	66,292	24.03	5.45	3,873	33.16	18,232	28.02	5.46	8,042	69.84	40,222	57.22	6,322	12.77	6.35	42,906	31.57	212,228	30.97	5.62	
6	3,375	6.01	13,418	4.76	5.75	898	7.68	3,398	5.16	6.01	1,068	9.35	5,406	7.73	3,229	6.40	6.35	5,930	4.46	35,723	5.18	6.02	
7	1,820	3.24	10,966	3.83	6.94	293	2.54	1,570	2.40	7.07	363	3.15	2,802	4.00	1,213	2.39	7.55	3,169	2.38	20,639	2.99	6.51	
8	940	1.67	6,151	2.14	7.43	142	1.21	1,233	1.87	8.41	265	2.30	2,725	3.88	889	1.74	8.73	1,610	1.21	11,348	1.65	7.05	
9	289	0.51	2,434	0.85	8.42	64	0.55	538	0.82	8.41	132	1.16	1,401	2.00	401	0.79	9.11	991	0.72	8,409	1.22	9.14	
10	132	0.24	1,253	0.44	9.49	58	0.50	719	1.10	12.40	149	1.30	1,046	1.46	229	0.45	18.81	472	0.35	4,995	0.72	10.58	
11	119	0.21	1,221	0.43	11.08	23	0.20	319	0.52	13.11	91	0.79	1,230	1.73	133	0.27	11.58	239	0.18	2,754	0.40	11.52	
12	82	0.15	921	0.32	11.83	14	0.12	223	0.34	15.93	74	0.65	1,078	1.49	141	0.28	14.57	244	0.18	2,035	0.30	12.03	
13	47	0.08	713	0.25	15.17	13	0.11	200	0.31	15.38	44	0.38	950	1.33	244	0.48	20.33	185	0.14	2,617	0.38	14.15	
14	35	0.06	535	0.19	15.29	11	0.09	214	0.33	19.45	39	0.34	529	0.75	137	0.26	19.30	154	0.11	1,778	0.26	15.46	
15	372	0.66	3,910	1.41	23.95	145	1.24	5,661	8.66	30.04	403	3.53	12,007	17.20	978	1.93	18.81	972	0.73	27,556	4.00	28.35	
16	112	0.20	480	0.17	4.29	39	0.33	214	0.33	5.49	151	1.33	757	1.07	102	0.20	4.25	326	0.24	1,553	0.23	4.76	
17	56,148	100.00	287,094	100.00	5.11	11,690	100.00	65,355	100.00	5.59	55,680	100.00	286,048	100.00	5.14	9,683	100.00	50,706	100.00	5.30	133,081	100.00	5.16
18	Total—Totaal																						

[U.G. 55—20.]

DWELLINGS—URBAN AREAS.

TABLE II.—Number and proportion per cent. of Private Dwellings under headings "Owned by Occupier" and "Not owned by Occupier" classified according to the number of rooms in Urban Areas, Union and Provinces—Census 1918.

Number of Rooms. Aantal Kamers.	Cape of Good Hope. Kaap de Goede Hoop.				Natal.				Transvaal.				Orange Free State. Oranje Vrijstaat.				Union of South Africa. Unie van Zuid Afrika.							
	Total Private Dwellings.		Owned by Occupier.		Not owned by Occupier.		Total Private Dwellings.		Owned by Occupier.		Not owned by Occupier.		Total Private Dwellings.		Owned by Occupier.		Not owned by Occupier.		Total Private Dwellings.		Owned by Occupier.		Not owned by Occupier.	
	No.	Per cent.	No.	Per cent.	No.	Per cent.	No.	Per cent.	No.	Per cent.	No.	Per cent.	No.	Per cent.	No.	Per cent.	No.	Per cent.	No.	Per cent.	No.	Per cent.	No.	Per cent.

WONINGEN—STEDELIKE GEBIEDEN.

TABLE II.—Aantal en percent van Private Woningen onder de Hoofden "Eigendom van bewoner" en "Niet eigendom van bewoner" geklassificeerd volgens het aantal kamers in Stedelijke Gebieden, Unie en Provincies—Census 1918.

1	848	2.15	710	8.98	2.15	1,423	2.23	373	2.23	1,050	3.13	542	2.70	50	2.70	192	1.37	2,601	2.17	562	2.039	1.37	
2	3,676	9.46	3,010	37.73	8.27	5,810	13.57	4,378	26.65	11,247	33.57	2,201	13.44	863	25.35	1,338	23.58	28,474	23.74	7,486	20,988	18.27	
3	13,405	34.64	7,657	22.85	20.17	15,422	49.00	4,900	29.77	10,432	31.13	2,408	15.74	953	27.74	1,455	26.05	33,957	28.31	10,405	28,582	25.39	
4	16,131	41.83	9,595	18.79	26.78	6,528	19.29	3,229	19.63	3,740	11.16	1,371	8.63	157	4.79	688	18.66	21,407	17.84	8,084	22,004	19.00	
5	10,133	26.44	3,305	6.43	9.85	1,145	3.38	1,329	7.93	1,410	4.21	698	3.94	8.04	304	10.97	1,325	2,700	2.24	2,700	4.44	2,655	
6	1,548	4.00	682	1.33	2.04	279	0.81	279	0.84	139	0.41	67	0.41	17	0.53	160	0.49	2,688	1.434	1,254	3,500	3.00	
7	749	1.94	304	0.61	0.91	177	0.52	140	0.44	82	0.25	31	0.10	14	0.43	34	0.38	1,288	1.07	562	1,562	1.37	
8	184	0.47	162	0.33	0.44	72	0.21	56	0.17	39	0.12	14	0.04	8	0.24	17	0.16	315	0.26	159	435	0.38	
9	138	0.35	53	0.10	0.14	62	0.18	27	0.08	15	0.04	9	0.03	2	0.06	7	0.06	113	0.09	74	199	0.18	
10	50	0.13	20	0.04	0.06	29	0.08	12	0.04	7	0.02	3	0.01	1	0.03	1	0.01	89	0.07	49	130	0.12	
11	20	0.05	6	0.01	0.01	11	0.03	5	0.01	3	0.01	2	0.01	2	0.01	2	0.02	38	0.03	21	56	0.05	
12	9	0.02	3	0.01	0.01	4	0.01	1	0.01	1	0.01	1	0.01	1	0.01	1	0.01	17	0.01	7	18	0.02	
13	3	0.01	1	0.00	0.00	1	0.00	1	0.00	1	0.00	1	0.00	1	0.00	1	0.00	1	0.00	1	3	0.00	
14	13	0.03	5	0.01	0.01	34	0.09	8	0.02	26	0.08	1	0.00	2	0.01	1	0.00	63	0.05	19	50	0.04	
15	66	0.17	19	0.04	0.04	103	0.29	16	0.05	87	0.26	12	0.04	2	0.01	10	0.03	291	0.24	46	125	0.11	
16	50,442	100.00	33,507	66.44	66.44	50,289	100.00	16,754	33.33	33,515	66.67	8,683	17.27	3,680	7.36	5,023	10.05	119,970	239.81	40,981	81,962	78.99	
17	Total—Totaal																						

C



DWELLINGS—URBAN AREAS.

WONINGEN—STEDELIKE GEBIEDEN.

TABLE III.—Number of occupants and the average number of occupants residing in Private Dwellings, Dwellings other than Private, and all Dwellings in the principal Urban Areas of the Union grouped in seven Geographical Divisions—Census 1918.

TABEL III.—Aantal bewoners, en het gemiddelde aantal bewoners woonachtig in Private Woningen, Woningen anders dan Private, en alle Woningen en de Voornaamste Stedelijke Gebieden van de Unie gegroepeerd in zeven Aardrijkskundige Afdelingen—Census 1918.

Division.	Number of Occupants—Aantal Bewoners.			Average Number of Occupants—Gemiddelde Aantal Bewoners.							Afdeling.	
	Total all Dwellings.	Private Dwellings.	Dwellings other than Private.	3 Rooms.	4 Rooms.	5 Rooms.	6 Rooms.	Average 3-6 Rooms.	All Private Dwellings.	Dwellings other than Private.		All Dwellings.
<b>I. COASTAL.</b>												
Cape Town and Suburbs	91,892	73,201	18,691	4.3	4.7	5.1	5.4	4.8	4.9	4.9	5.3	Kaapstad en Voorsteden.
Cape Town Municipality	82,815	64,985	17,830	4.3	4.7	5.1	5.4	4.8	4.9	5.3	Kaapstad Municipaliteit.	
Wynberg Municipality	8,215	7,816	399	4.3	4.6	5.1	5.4	4.7	4.7	5.1	Wynberg Municipaliteit.	
Parow V.S.B.	1,325	1,291	34	5.2	5.5	5.2	6.4	5.3	5.1	4.8	Parow D.B.K.	
Port Elizabeth and Suburbs	21,998	19,362	2,636	4.4	4.9	5.0	5.6	4.9	4.9	5.1	Port Elizabeth en Voorsteden.	
Port Elizabeth Municipality	20,735	18,135	2,600	4.4	4.9	5.0	5.6	4.9	4.9	5.1	Port Elizabeth Municipaliteit.	
Walmir Municipality	1,263	1,227	36	4.0	4.5	4.5	5.3	4.7	4.9	4.9	Walmir Municipaliteit.	
East London and Suburbs	17,559	15,397	1,962	4.6	5.1	5.1	5.9	5.1	5.2	5.4	East London en Voorsteden.	
East London Municipality	14,433	12,433	1,859	4.6	5.1	5.2	5.9	5.1	5.2	5.5	East London Municipaliteit.	
Cambridge Municipality	3,067	2,964	103	4.6	4.8	4.9	5.8	4.9	4.9	4.9	Cambridge Municipaliteit.	
Durban and Suburbs	46,551	36,371	10,180	3.9	4.6	5.2	5.5	5.0	5.1	5.9	Durban en Voorsteden.	
Durban Municipality	40,835	30,618	9,937	3.9	4.6	5.1	5.5	5.0	5.2	5.9	Durban Municipaliteit.	
Durban Rural Suburbs	6,016	5,753	263	4.1	4.4	4.6	5.0	5.0	4.9	5.0	Durban Landelike Voorsteden.	
Mossel Bay	2,372	2,027	345	4.7	5.0	5.4	5.5	5.1	5.0	5.2	Mossel Bay.	
Uitenhage	6,563	5,757	806	4.7	5.0	5.1	5.4	5.1	5.1	5.1	Uitenhage.	
Simonstown	1,697	1,656	41	3.6	4.0	4.2	3.3	4.0	3.8	4.2	Simonstown.	
	188,302	153,701	34,601	4.3	4.8	5.1	5.5	4.9	5.0	5.4		
<b>II. SOUTH—NON-COASTAL.</b>												
Paarl	5,159	4,409	750	4.1	4.6	4.7	5.3	4.7	4.9	4.9	Paarl.	
Pudisboom	4,550	4,222	328	4.0	4.5	4.5	5.1	4.5	5.0	5.1	Pudisboom.	
Queenstown	4,144	3,818	326	4.0	4.9	4.9	5.1	4.7	4.3	4.4	Queenstown.	
Craddock	2,404	2,216	188	4.6	4.6	4.8	6.0	4.6	4.9	4.9	Craddock.	
Umtata	1,114	950	164	4.2	4.6	5.2	5.9	5.0	5.0	5.0	Umtata.	
Kingwilliamstown	3,138	2,650	488	4.3	4.5	4.8	5.1	4.7	4.6	4.9	Kingwilliamstown.	
Worcester	2,753	2,006	747	4.2	4.7	5.2	4.5	4.7	5.0	5.0	Worcester.	
Stellenbosch	2,479	2,063	416	4.5	4.8	5.1	5.2	4.9	4.9	5.8	Stellenbosch.	
Robertson	2,118	1,960	158	4.1	4.0	4.7	4.9	4.4	4.6	4.6	Robertson.	
Wellington	2,065	1,852	213	5.4	5.4	5.3	4.4	4.4	4.6	4.6	Wellington.	
George	1,852	1,852	0	4.7	4.7	4.0	3.4	5.1	5.2	5.3	George.	
Somerset East	2,043	1,885	158	4.7	5.1	4.0	3.4	5.0	5.1	5.3	Somerset East.	
	42,403	37,255	5,148	4.4	4.6	4.9	5.2	4.8	4.8	5.0		

DWELLINGS—URBAN AREAS.—TABLE III. (continued.)

WONINGEN—STEDELIKE GEBIEDEN.—TABEL III. (vervolg.)

Division.	Number of Occupants—Aantal Bewoners.			Average Number of Occupants—Gemiddelde Aantal Bewoners.							Afdeling.	
	Total all Dwellings.	Private Dwellings.	Dwellings other than Private.	3 Rooms.	4 Rooms.	5 Rooms.	6 Rooms.	Average 3-6 Rooms.	All Private Dwellings.	Dwellings other than Private.		All Dwellings.
<b>III. CENTRAL.</b>												
Bloemfontein and Suburbs	13,519	11,307	2,212	4.8	5.2	5.8	6.1	5.3	5.3	5.0	5.7	Bloemfontein en Voorsteden.
Bloemfontein Municipality	12,545	10,367	2,178	4.6	5.2	5.7	6.3	5.3	5.3	5.7	Bloemfontein Municipaliteit.	
Bloemfontein Rural Suburbs	974	940	34	6.0	5.5	5.7	6.3	5.0	5.5	5.5	Bloemfontein Landelike Voorsteden.	
Kimberley	16,157	14,626	1,531	4.2	4.8	5.1	6.0	4.9	4.9	5.0	Kimberley.	
Beaufort West	2,635	2,422	213	4.3	4.4	5.0	5.3	4.6	4.6	4.6	Beaufort West.	
Kroonstad	2,355	2,250	105	4.7	5.1	5.0	6.0	5.0	5.3	5.1	Kroonstad.	
Jagersfontein	1,833	1,724	109	4.4	4.6	5.0	5.4	4.8	4.8	4.8	Jagersfontein.	
Aliwal North	2,163	1,822	341	4.6	4.6	5.0	5.4	4.9	4.8	5.5	Aliwal North.	
Robertson	2,097	1,817	280	4.5	4.8	5.4	5.7	5.0	5.0	5.2	Robertson.	
Grat-Reinet	3,544	3,195	349	4.3	4.6	4.3	4.7	4.5	4.7	4.5	Grat-Reinet.	
Ficksburg	1,870	1,751	119	5.0	6.0	6.2	6.1	5.7	5.7	5.6	Ficksburg.	
	46,326	41,022	5,304	4.5	4.9	5.2	5.6	5.0	5.0	5.2		
<b>IV. EASTERN.</b>												
Pietermaritzburg	13,888	12,674	1,214	3.9	4.4	4.7	5.3	4.6	4.8	5.0	Pietermaritzburg.	
Harrisville	2,494	2,181	313	4.6	4.9	5.2	6.8	5.2	5.1	5.1	Harrisville.	
Lady Smith	2,702	2,037	665	4.1	4.3	4.4	4.7	4.4	4.3	4.5	Lady Smith.	
Newcastle	1,561	1,437	124	4.9	5.1	5.4	6.6	5.3	5.2	5.2	Newcastle.	
Standerton	772	654	118	3.4	4.3	4.5	4.7	4.3	4.3	4.6	Standerton.	
Kokstad	22,082	20,161	1,921	4.2	4.5	4.8	5.5	4.8	4.8	5.0	Kokstad.	
	134,220	112,619	21,601	4.4	5.0	5.5	6.0	4.9	4.9	5.2		
<b>V. WITWATERSRAND.</b>												
Johannesburg	35,729	31,367	4,362	4.5	5.1	5.5	5.9	5.0	5.1	5.3	Pretoria en Voorsteden.	
Pretoria and Suburbs	28,139	24,000	4,139	4.3	5.0	5.2	5.8	5.0	5.1	5.3	Pretoria Municipaliteit.	
Pretoria Municipality	6,976	6,062	914	4.3	4.9	4.8	5.2	4.7	4.7	4.7	Pretoria Municipaliteit.	
Innesdale Municipality	614	605	9	4.3	4.9	4.8	5.2	4.7	4.7	4.7	Innesdale Municipaliteit.	
Pretoria Rural Suburbs	17,336	16,248	2,088	4.5	5.2	5.2	6.4	4.9	4.7	4.9	Pretoria Landelike Voorsteden.	
Benoni	11,781	10,515	1,266	4.4	5.1	5.6	6.0	4.8	4.8	4.7	Benoni.	
Boksburg	16,144	14,983	1,161	4.6	5.0	5.7	6.2	5.0	4.8	4.7	Boksburg.	
Germiston	7,486	6,656	830	4.1	4.6	5.2	5.6	4.7	4.6	4.6	Germiston.	
Krugersdorp	2,843	2,539	304	4.5	5.2	4.9	5.2	4.9	4.7	4.7	Krugersdorp.	
Rooibospoort—Maraisburg	238,850	205,498	33,352	4.4	5.0	5.5	5.9	4.9	4.9	5.1	Rooibospoort—Maraisburg.	
Springs											Springs.	
	134,220	112,619	21,601	4.4	5.0	5.5	6.0	4.9	4.9	5.2		
<b>VI. NORTHERN.</b>												
Pietersburg	1,323	1,128	195	4.8	5.0	6.5	5.9	5.4	5.4	5.5	Pietersburg.	
Rustenburg	2,047	1,763	284	5.0	4.9	5.2	6.0	5.3	5.2	5.2	Rustenburg.	
Middelburg	2,272	1,971	301	4.8	5.3	5.2	5.8	5.2	5.1	5.3	Middelburg.	
Potchefstroom	6,869	6,637	232	4.7	5.3	5.0	5.8	5.2	5.0	5.3	Potchefstroom.	
Vryburg	1,058	910	148	3.9	4.4	4.9	4.9	4.4	4.3	4.4	Vryburg.	
Matieland	2,155	1,987	168	5.0	5.6	5.9	7.2	5.6	5.9	6.0	Matieland.	
Kruger	2,036	1,780	247	4.9	5.2	5.3	5.8	5.2	5.0	5.1	Kruger.	
Klerksdorp	2,099	1,937	162	4.7	5.0	5.2	6.2	5.0	4.9	5.0	Klerksdorp.	
Parys	21,194	18,966	2,192	4.7	5.1	5.4	5.9	5.1	5.0	5.1	Parys.	
	703	612	181	4.4	5.2	4.6	6.0	5.1	4.6	5.1		
<b>VII. NORTH-WESTERN.</b>												
Calvinia	1,033	952	81	5.3	5.2	4.3	5.4	5.1	4.9	4.9	Calvinia.	
Prieska	1,180	1,020	160	4.8	5.1	5.7	8.1	5.0	4.9	5.2	Prieska.	
Uppington	3,006	2,584	422	4.9	5.2	4.7	5.6	5.1	4.8	4.9	Uppington.	



DWELLINGS—URBAN AREAS.

WONINGEN—STEDELIKE GEBIEDEN.

TABLE IV.—Number of Private Dwellings in the Principal Urban Areas of the Union, grouped in seven Geographical Divisions—Census 1918.

TABEL IV.—Aantal Woningen in de voornaamste Stedelijke Gebieden van de Unie, gegroepeerd in zeven Aardrijkskundige Afdelingen—Census 1918.

Division.	Total all Occupied Dwellings. Totaal alle Bewoonde Woningen.	Private Dwellings—Private Woningen.			Dwellings other than Private. Woningen anders dan Private.	Afdeling.
		Owned by Occupier. Eigendom van Bewoner.	Rented. Verhuurd.	Rent Unspecified. Huur Ongespecificeerd.		
<b>I. COASTAL.</b>						
Cape Town and Suburbs Cape Town Municipality Wynberg Municipality Parow V.M.B.	17,333 15,343 1,990 1,260	3,249 2,722 517 94	11,492 10,693 1,799 149	308 266 42 3	15,049 13,708 1,341 240	Kaapstad en Voorsteden Kaapstad Municipaliteit. Wynberg Municipaliteit. Parow D.B.B.
Port Elizabeth and Suburbs Walmer Municipality	4,315 4,057 258	915 778 137	2,956 2,843 113	65 63 2	3,936 3,654 282	Port Elizabeth en Voorsteden. Walmer Municipaliteit.
East London and Suburbs East London Municipality Cambridge Municipality	3,222 2,602 620	929 640 289	1,967 1,670 297	77 64 13	2,973 2,374 599	East London en Voorsteden. East London Municipaliteit. Cambridge Municipaliteit.
Durban and Suburbs Durban Municipality Durban Rural Suburbs	7,854 6,970 1,214	2,592 1,995 594	4,350 3,820 530	159 117 42	7,101 5,925 1,176	Durban en Voorsteden. Durban Municipaliteit. Durban Landelike Voorsteden.
Mossel Bay Hitenhage Simonstown	457 1,252 371	85 340 40	306 843 203	17 19 24	408 1,211 279	Mossel Bay. Hitenhage. Simonstown.
	34,764	8,105	22,119	659	30,973	
<b>II. SOUTH—NON-COASTAL.</b>						
Paarl Grahamstown Queenstown Craddock Umtata Kingwilliamstown Worcester Stellenbosch Robertson Wellington George Somerset East	1,055 1,072 888 488 214 1,034 1,033 478 491 463 380 389	382 415 344 171 50 358 373 165 177 198 147 159	511 747 582 417 119 562 524 214 223 206 182 200	48 27 23 36 11 11 19 19 23 14	916 970 797 456 189 562 543 398 417 427 356 373	Paarl. Grahamstown. Queenstown. Craddock. Umtata. Kingwilliamstown. Worcester. Stellenbosch. Robertson. Wellington. George. Somerset East.
	8,532	3,066	4,347	313	7,726	

DWELLINGS—URBAN AREAS.—TABLE IV. (continued).

WONINGEN—STEDELIKE GEBIEDEN.—TABEL IV. (vervolg).

Division.	Total all Occupied Dwellings. Totaal alle Bewoonde Woningen.	Private Dwellings—Private Woningen.			Dwellings other than Private. Woningen anders dan Private.	Afdeling.
		Owned by Occupier. Eigendom van Bewoner.	Rented. Verhuurd.	Rent Unspecified. Huur Ongespecificeerd.		
<b>III. CENTRAL.</b>						
Bloemfontein and Suburbs Bloemfontein Municipality Bloemfontein Rural Suburbs	2,398 2,219 177	613 485 128	1,408 1,388 20	97 74 23	2,118 1,947 171	III. CENTRAAL. Bloemfontein en Voorsteden. Bloemfontein Municipaliteit. Bloemfontein Landelike Voorsteden.
Kimberley Beaufort West Kroonstad Jagersfontein Alwal North Bethlehem Graaff-Reinet Ficksburg	3,248 570 440 416 313 789 384	1,162 92 95 367 123 255 159	1,708 362 308 367 324 395 109	117 17 23 19 15 40 31	2,987 535 410 385 362 720 309	Kimberley. Beaufort West. Kroonstad. Jagersfontein. Alwal North. Bethlehem. Graaff-Reinet. Ficksburg.
	8,985	2,832	4,991	378	8,201	
<b>IV. EASTERN.</b>						
Pietermaritzburg Pietermaritzburg Ladysmith Newcastle Standerton Kokstad	2,795 450 431 559 134 189	869 293 128 114 53	1,674 197 284 133 91	97 26 12 17 8	2,640 426 424 244 152	IV. OOSTELIKE. Pietermaritzburg. Pietermaritzburg. Ladysmith. Newcastle. Standerton. Kokstad.
<b>V. WITWATERSRAND.</b>						
Johannesburg Pretoria and Suburbs Pretoria Municipality Imesdale Municipality Pretoria Rural Suburbs	25,657 6,767 5,282 1,355 130	7,756 2,640 1,712 865 63	14,716 3,270 2,759 451 60	700 489 — 5	23,172 6,199 4,755 1,316 128	V. WITWATERSRAND. Johannesburg. Pretoria en Voorsteden. Pretoria Municipaliteit. Imesdale Municipaliteit. Pretoria Landelike Voorsteden.
Benoni Germiston Krugersdorp Roodepoort—Maraisburg Springs	3,529 2,827 3,330 2,669 1,630 682	746 482 407 719 598 92	2,338 1,550 2,379 1,323 1,300 373	142 144 163 158 74	3,226 2,176 3,058 2,405 1,535 486	Benoni. Germiston. Krugersdorp. Roodepoort—Maraisburg. Springs.
	46,711	13,232	27,106	1,887	42,225	
<b>VI. NORTHERN.</b>						
Pietersburg Rustenburg Middelburg Vryburg Mafeking Ermedo Klerksdorp Parys	240 431 1,357 210 393 410 417	106 146 530 80 44 122 137	87 206 575 95 204 216 184	17 36 213 10 19 8 21	210 388 1,318 185 367 354 392	VI. NOORDER. Pietersburg. Rustenburg. Middelburg. Vryburg. Mafeking. Ermedo. Klerksdorp. Parys.
<b>VII. NORTH WESTERN.</b>						
Calvinia Prieska Opunton	157 212 239	48 78 88	73 102 98	12 12 22	133 193 208	VII. NOORDWESTELIKE. Calvinia. Prieska. Opunton.
	608	214	273	47	534	



DWELLINGS—URBAN AREAS.

WONINGEN—STEDELIKE GEBIEDEN.

TABLE V.—Number of rented dwellings and the average monthly rental classified according to the number of living rooms in the principal Urban Areas of the Union, grouped in seven Geographical Divisions—Census 1918.

TABLE V.—Aantal verhuurde woningen, en de gemiddelde maandelijke huur geklassificeerd volgens het aantal woonkamers in de voornaamste Stedelijke Gebieden van de Unie gegroepeerd in zeven Aardrijkskundige Afdelingen—Census 1918.

Division.	Total Dwellings with Rent Specified.					Rented Dwellings of Verhuurde Woningen van.					Average Monthly Rent. Gemiddelde Maandelijke Huur.					Afdeling.					
	No.	3 Rooms. Kamers.		4 Rooms. Kamers.		5 Rooms. Kamers.		6 Rooms. Kamers.		All Others. Alle Anderen.	No.	3 Rooms. Kamers.		4 Rooms. Kamers.			5 Rooms. Kamers.		6 Rooms. Kamers.		Average 3-6 Rooms. Gemiddelde 3-6 Kamers.
		£ s. d.	£ s. d.	£ s. d.	£ s. d.	£ s. d.	£ s. d.	£ s. d.	£ s. d.			£ s. d.	£ s. d.	£ s. d.	£ s. d.		£ s. d.	£ s. d.	£ s. d.	£ s. d.	
<b>I. COASTAL.</b>																					
<b>Cape Town and Suburbs</b>	11,492	3,049	2,077	1,318	2,945	2 16 11	3 18 11	5 8 2	6 10 2	4 5 5	2 16 11	3 18 11	5 8 2	6 10 2	4 5 5	Kaapstad en Voorsteden					
Wynberg Municipality	1,098	293	178	119	1,229	2 3 9	3 0 3	5 5 6	5 12 0	3 7 8	2 3 9	3 0 3	5 5 6	5 12 0	Wynberg Munisipaliteit.						
Parow V.M.B.	149	65	36	—	39	1 11 4	1 19 1	2 4 5	—	1 15 1	1 11 4	1 19 1	2 4 5	—	Parow D.B.R.						
<b>Port Elizabeth and Suburbs</b>	2,956	663	597	279	407	2 12 4	3 9 0	4 11 6	5 14 2	3 17 5	2 12 4	3 9 0	4 11 6	5 14 2	Port Elizabeth en Voorsteden.						
Wolmer Municipality	2,843	632	566	238	393	2 11 11	3 18 6	4 14 7	5 11 5	3 16 11	2 843	632	566	238	Wolmer Munisipaliteit.						
East London and Suburbs	1,967	230	764	585	236	3 0 0	3 13 3	4 15 0	5 13 0	4 2 4	3 0 0	3 13 3	4 15 0	5 13 0	East London en Voorsteden.						
Cambridge Municipality	1,670	108	478	331	214	3 2 3	3 15 9	4 19 6	5 16 5	4 7 8	1,670	108	478	331	Cambridge Munisipaliteit.						
<b>Durban and Suburbs</b>	4,350	1,178	1,288	685	767	3 15 0	4 10 9	5 11 4	6 10 4	5 0 4	3 15 0	4 10 9	5 11 4	6 10 4	Durban en Voorsteden						
Durban Rural Suburbs	3,820	388	1,017	600	683	2 19 0	3 12 3	4 3 3	4 10 8	3 16 6	3,820	388	1,017	600	Durban Landelike Voorsteden.						
Mossel Bay	306	78	66	24	94	1 18 11	2 12 9	3 12 11	4 0 7	2 14 1	306	78	66	24	Mossel Bay.						
Uitenhage	1,843	246	423	16	128	2 7 8	2 18 10	3 13 6	4 19 3	3 14 1	1,843	246	423	16	Uitenhage.						
Simons-town	205	45	41	—	—	2 7 8	2 18 10	3 13 6	4 19 3	3 14 1	205	45	41	—	Simons-town.						
	22,119	4,777	6,345	4,758	3,718	2 16 10	3 17 3	5 3 7	6 5 4	4 5 5	22,119	4,777	6,345	4,758	/						
<b>II. SOUTH—NON-COASTAL.</b>																					
Paarl	511	129	144	101	84	1 16 8	2 6 6	2 15 0	3 11 3	2 11 3	511	129	144	101	Paarl.						
Grahamstown	532	107	154	332	188	1 17 5	2 8 4	3 9 9	4 4 4	2 16 0	Grahamstown	532	107	154	Grahamstown.						
Queenstown	417	72	120	100	90	2 11 8	2 6 7	3 15 10	3 9 0	2 14 1	417	72	120	100	Queenstown.						
Craddock	270	26	73	37	35	1 18 8	2 6 7	3 15 10	3 9 0	2 14 1	270	26	73	37	Craddock.						
Umtata	119	16	43	14	10	3 3 0	3 14 8	4 14 2	5 3 2	4 3 0	119	16	43	14	Umtata.						
Ungewillamstown	562	61	109	87	56	2 7 13	3 12 0	3 12 0	4 6 1	3 15 6	562	61	109	87	Ungewillamstown.						
Stellenbosch	214	25	53	43	56	2 6 1	3 6 7	3 17 4	4 11 0	3 12 0	214	25	53	43	Stellenbosch.						
Robertson	223	56	49	40	49	1 9 3	1 16 6	2 14 5	3 1 1	2 2 9	223	56	49	40	Robertson.						
Wellington	206	39	71	36	40	1 14 2	2 8 2	2 18 7	3 8 9	2 9 7	206	39	71	36	Wellington.						
George	182	38	29	13	92	1 2 6	2 2 0	2 14 1	3 1 1	1 18 0	182	38	29	13	George.						
Somerset East	200	32	47	43	53	1 9 10	2 1 4	3 3 9	3 7 5	2 10 4	200	32	47	43	Somerset East.						
	4,347	821	1,295	921	448	1 16 10	2 6 5	3 10 10	4 0 9	2 16 11	4,347	821	1,295	921	/						

DWELLINGS—URBAN AREAS.—TABLE V. (continued).

WONINGEN—STEDELIKE GEBIEDEN.—TABEL V. (vervolg).

Division.	Total Dwellings with Rent Specified.					Rented Dwellings of Verhuurde Woningen van.					Average Monthly Rent. Gemiddelde Maandelijke Huur.					Afdeling.					
	No.	3 Rooms. Kamers.		4 Rooms. Kamers.		5 Rooms. Kamers.		6 Rooms. Kamers.		All Others. Alle Anderen.	No.	3 Rooms. Kamers.		4 Rooms. Kamers.			5 Rooms. Kamers.		6 Rooms. Kamers.		Average 3-6 Rooms. Gemiddelde 3-6 Kamers.
		£ s. d.	£ s. d.	£ s. d.	£ s. d.	£ s. d.	£ s. d.	£ s. d.	£ s. d.			£ s. d.	£ s. d.	£ s. d.	£ s. d.		£ s. d.	£ s. d.	£ s. d.	£ s. d.	
<b>III. CENTRAL.</b>																					
<b>Bloemfontein and Suburbs</b>	1,408	314	509	178	321	4 4 5-	5 3 9	6 17 10	7 9 5	5 7 4	1,408	314	509	178	Bloemfontein en Voorsteden.						
Bloemfontein Municipality	1,388	308	507	177	313	3 4 9	4 16 6	5 0 0	6 8 8	5 7 7	Bloemfontein Municipality	1,388	308	507	Bloemfontein Munisipaliteit.						
Bloemfontein Rural Suburbs	20	6	2	1	8	—	—	—	—	—	Bloemfontein Rural Suburbs	20	6	2	Bloemfontein Landelike Voorsteden.						
Kimberley	1,708	382	710	392	485	3 2 0	3 14 4	4 15 5	5 12 10	4 1 0	Kimberley	1,708	382	710	Kimberley.						
Wynburg	352	72	153	66	65	2 9 3	2 14 2	3 10 3	3 17 7	2 14 8	352	72	153	66	Wynburg.						
Kroonstad	308	91	101	50	49	3 3 3	3 15 2	4 9 1	4 13 8	3 14 7	Kroonstad	308	91	101	Kroonstad.						
Jagersfontein	267	91	76	42	47	2 6 9	3 10 2	3 10 2	3 15 0	2 14 7	267	91	76	42	Jagersfontein.						
Alhwal North	220	54	61	39	51	2 9 5	3 12 0	3 12 0	4 15 1	3 19 10	Alhwal North	220	54	61	Alhwal Noord.						
Bethlehem	344	44	79	38	58	2 7 1	2 7 1	2 7 1	3 8 10	2 4 1	Bethlehem	344	44	79	Bethlehem.						
Graaff-Reinet	395	79	123	52	75	3 5 4	4 1 4	5 13 2	6 1 1	4 6 1	395	79	123	52	Graaff-Reinet.						
Fricksburg	109	21	34	18	28	1 9 11	2 15 1	2 19 9	4 0 10	2 14 1	109	21	34	18	Fricksburg.						
	4,991	1,183	1,828	790	862	3 2 7	3 19 3	4 16 2	5 12 1	4 0 4	4,991	1,183	1,828	790	/						
<b>IV. EASTERN.</b>																					
Pietermaritzburg	1,674	149	562	482	290	2 18 9	3 11 5	4 10 7	5 8 7	4 2 6	Pietermaritzburg	1,674	149	562	Pietermaritzburg.						
Richardsburg	1,077	32	68	48	30	3 16 9	3 13 6	4 4 4	4 7 7	3 17 0	1,077	32	68	48	Richardsburg.						
Ladysmith	284	49	108	62	45	3 1 9	3 9 4	3 19 7	3 15 10	3 11 0	284	49	108	62	Ladysmith.						
Newcastle	133	12	40	30	23	1 8 4	2 17 7	3 10 5	4 1 3	3 1 0	133	12	40	30	Newcastle.						
Standerton	124	27	46	26	11	1 4 7	3 17 11	4 12 2	5 12 10	4 2 2	124	27	46	26	Standerton.						
Kokstad	91	9	27	24	16	2 9 3	3 0 9	3 7 9	4 1 1	3 2 3	91	9	27	24	Kokstad.						
	2,483	278	851	672	388	2 19 9	3 11 0	4 7 9	5 2 6	3 19 3	2,483	278	851	672	/						
<b>V. WITWATERSRAND.</b>																					
Johannesburg	14,716	5,023	4,508	1,610	688	4 16 5	5 17 4	8 1 7	10 0 0	5 19 3	Johannesburg	14,716	5,023	4,508	Johannesburg.						
Pretoria and Suburbs	3,270	863	1,119	503	593	4 4 1	5 14 10	7 11 9	9 4 2	5 16 7	Pretoria and Suburbs	3,270	863	1,119	Pretoria en Voorsteden.						
Imvestale Municipality	2,759	688	936	459	448	2 13 4	3 7 3	3 18 3	5 4 10	3 2 3	Imvestale Municipality	2,759	688	936	Imvestale Munisipaliteit.						
Pretoria Rural Suburbs	511	175	223	154	145	2 19 8	6 2 2	8 11 1	10 4 8	6 4 11	Pretoria Rural Suburbs	511	175	223	Pretoria Landelike Voorsteden.						
Benoni	2,238	946	721	177	486	5 3 4	5 7 11	6 2 0	7 10 8	5 9 4	Benoni	2,238	946	721	Benoni.						
Brandsburg	1,550	774	420	80	245	4 19 4	4 19 4	5 10 7	7 9 2	4 12 4	1,550	774	420	80	Brandsburg.						
Germiston	2,379	905	857	163	407	4 11 7	4 17 6	5 10 7	6 16 1	4 16 8	2,379	905	857	163	Germiston.						
Krugersdorp	1,523	569	584	140	177	3 16 0	4 9 10	5 10 4	7 0 11	4 7 10	1,523	569	584	140	Krugersdorp.						
Rooiapoort—Maraisburg	957	377	328	82	142	4 2 8	4 13 3	4 17 4	5 19 10	4 9 9	Rooiapoort—Maraisburg	957	377	328	Rooiapoort—Maraisburg.						
Springs	373	136	112	49	73	5 4 2	5 7 8	4 10 2	7 7 3	5 5 0	Springs	373	136	112	49	Springs.					
	27,106	9,593	8,659	2,804	1,060	4 12 9	5 10 5	7 6 1	9 6 2	5 11 0	27,106	9,593	8,659	2,804	/						
<b>VI. NORTHERN.</b>																					
Pietersburg	87	25	30	13	4	3 3 5	4 10 4	5 0 9	5 11 3	4 4 0	Pietersburg	87	25	30	Pietersburg.						
Rustenburg	151	38	47	23	11	2 18 7	3 0 8	4 5 6	4 10 0	3 5 2	151	38	47	23	Rustenburg.						
Middelburg	575	137	173	93	34	2 5 2	3 14 2	4 8 6	5 5 0	3 13 0	575	137	173	93	Middelburg.						
Vryburg	95	17	31	14	20	2 4 1	2 13 6	3 16 0	3 7 2	2 17 11	95	17	31	14	Vryburg.						
Matieling	204	42	100	26	14	2 11 10	2 19 5	4 1 7	4 13 2	3 3 5	204	42	100	26	Matieling.						
Ermeelo	137	41	37	23	20	3 13 9	4 17 0	5 5 9	6 3 11	4 11 7	137	41	37	23	Ermeelo.						
Klerksdorp	146	47	55	18	15	1 8 0	2 15 6	3 1 3	3 2 8	2 10 7	146	47	55	18	Klerksdorp.						
Parys	154	44	65	15	62	1 18 0	2 15 6	3 1 3	3 2 8	2 10 7	154	44	65	15	Parys.						
	1,855	446	606	277	114	2 15 1	3 12 3	4 11 0	4 18 4	3 12 2	1,855	446	606	277	/						



DWELLINGS—URBAN AREAS.

TABLE VI.—Number of occupied dwellings, showing the number of private dwellings under the headings "Owned by occupier" and "Not owned by occupier" and the number of dwellings other than private in the principal Urban Areas of each Province—Census 1918.

Towns.	Private Dwellings—Private Woningen.						Dwellings other than Private. Woningen anders dan Private.	Steden
	Total all occupied Dwellings. Totaal alle bewoonde Woningen.	Owned by Occupier. Eigendom van Bewoner.	Not owned by Occupier. Niet eigendom van Bewoner.		Total. Totaal.	Dwellings other than Private. Woningen anders dan Private.		
			Rent Specified. Huur Gespecificeerd.	Rent Unspecified. Huur Ongespecificeerd.				
<b>Cape of Good Hope.</b>								
Cape Town	15,343	2,782	10,250	266	13,298	2,045	<b>Kaap de Goede Hoop.</b>	
Wynberg	1,630	373	1,093	39	1,505	125	Kaapstad.	
Parow	260	94	149	3	246	14	Wynberg.	
Alwal North	393	127	220	19	366	27	Parow.	
Beaufort West	570	166	352	17	535	35	Alwal North.	
Calvinia	157	48	73	12	133	24	Beaufort West.	
Cradoek	488	171	270	15	456	32	Calvinia.	
East London	2,602	640	1,670	64	2,374	228	Cradoek.	
Cambridge	620	289	297	13	599	21	East London.	
George	390	147	182	27	356	34	Cambridge.	
Graaff-Reinet	789	285	395	40	729	69	Graaff-Reinet.	
Grahamstown	1,072	415	532	23	1,022	102	Grahamstown.	
Kimberley	3,248	1,162	1,708	117	2,987	261	Kimberley.	
Kingwilliamstown	1,034	358	562	32	952	82	Kingwilliamstown.	
Kokstad	169	53	91	8	152	17	Kokstad.	
Mafeking	303	44	204	19	267	36	Mafeking.	
Mossel Bay	457	85	306	17	408	49	Mossel Bay.	
Oudtshoorn	967	275	599	42	916	51	Oudtshoorn.	
Paarl	1,055	362	511	43	916	139	Paarl.	
Port Elizabeth	4,057	778	2,843	63	3,684	373	Port Elizabeth.	
Wainier and Korsten	258	137	102	2	252	6	Wainier en Korsten.	
Prieska	212	78	102	13	193	19	Prieska.	
Queenstown	888	344	417	36	797	41	Queenstown.	
Robertson	491	177	223	17	417	74	Robertson.	
Simonstown	371	46	205	24	275	96	Simonstown.	
Somerset East	380	159	200	14	373	16	Somerset East.	
Stellenbosch	478	165	214	19	398	80	Stellenbosch.	
Uitenhage	1,282	349	843	39	1,231	51	Uitenhage.	
Umtata	214	59	119	11	189	25	Umtata.	
Uppington	239	88	98	22	208	31	Uppington.	
Vryburg	210	80	95	10	185	25	Vryburg.	
Wellington	463	198	206	23	427	36	Wellington.	
Worcester	653	236	312	11	559	94	Worcester.	
Other Urban Areas	14,446	6,165	5,975	958	13,098	1,348	Andere Stedelijke Gebieden.	
<b>Total</b>	<b>56,148</b>	<b>16,935</b>	<b>31,429</b>	<b>2,078</b>	<b>50,442</b>	<b>5,706</b>	<b>Totaal.</b>	
<b>Natal.</b>							<b>Natal.</b>	
Durban	6,670	1,998	3,820	117	5,935	735	Durban.	
Ladysmith	431	128	284	12	424	7	Ladysmith.	
Newcastle	259	114	113	17	244	15	Newcastle.	
Pietermaritzburg	2,795	869	1,674	97	2,640	155	Pietermaritzburg.	
Other Urban Areas	1,535	523	677	133	1,333	202	Andere Stedelijke Gebieden.	
<b>Total</b>	<b>11,690</b>	<b>3,632</b>	<b>6,568</b>	<b>376</b>	<b>10,576</b>	<b>1,114</b>	<b>Totaal.</b>	
<b>Transvaal.</b>							<b>Transvaal.</b>	
Johannesburg	25,657	7,756	14,716	700	23,172	2,485	Johannesburg.	
Germiston	3,330	407	2,379	267	3,053	277	Germiston.	
Benoni	3,529	746	2,338	142	3,226	303	Benoni.	
Krugersdorp	2,669	719	1,523	163	2,405	264	Krugersdorp.	
Boksburg	2,527	482	1,550	144	2,176	351	Boksburg.	
Rodepoort	1,630	390	957	108	1,455	175	Rodepoort.	
Springe	602	92	372	74	539	63	Springe.	
Ermelo	330	119	137	28	284	46	Ermelo.	
Klerksdorp	410	122	216	19	357	53	Klerksdorp.	
Middelburg	431	146	206	36	388	43	Middelburg.	
Pietersburg	240	106	87	17	210	30	Pietersburg.	
Potchefstroom	1,357	530	575	213	1,318	39	Potchefstroom.	
Pretoria	5,282	1,712	2,759	284	4,755	527	Pretoria.	
Innesdale	1,355	865	451	39	1,316	39	Innesdale.	
Rustenburg	393	163	151	34	348	45	Rustenburg.	
Standerton	300	128	124	27	279	21	Standerton.	
Other Urban Areas	5,698	2,271	2,240	468	4,988	650	Andere Stedelijke Gebieden.	
<b>Total</b>	<b>55,680</b>	<b>16,754</b>	<b>30,791</b>	<b>2,724</b>	<b>50,259</b>	<b>5,411</b>	<b>Totaal.</b>	
<b>Orange Free State.</b>							<b>Oranje Vrijstaat.</b>	
Bloemfontein	2,219	485	1,388	74	1,947	272	Bloemfontein.	
Bechielm	399	123	224	15	362	37	Bechielm.	
Ficksburg	334	169	109	31	309	25	Ficksburg.	
Harrismith	459	203	197	26	426	33	Harrismith.	
Jagersfontein	416	95	267	23	385	31	Jagersfontein.	
Kroonstad	440	92	308	19	419	21	Kroonstad.	
Parys	417	187	184	25	392	25	Parys.	
Other Urban Areas	4,879	2,306	1,785	352	4,443	436	Andere Stedelijke Gebieden.	
<b>Total</b>	<b>9,563</b>	<b>3,660</b>	<b>4,462</b>	<b>561</b>	<b>8,683</b>	<b>880</b>	<b>Totaal.</b>	
<b>Total Union of South Africa</b>	<b>133,081</b>	<b>40,981</b>	<b>73,250</b>	<b>5,739</b>	<b>119,970</b>	<b>13,111</b>	<b>Totaal Unie van Zuid Afrika</b>	

WONINGEN—STEDELIKE GEBIEDEN.

TABLE VI.—Aantal bewoonde woningen, aantonende het aantal private woningen onder de hoofden "Eigendom van bewoner" en "Niet eigendom van bewoner" en het aantal woningen anders dan private, in de voornaamste Stedelijke Gebieden van elke Provincie—Census 1918.

TABLE VII.—Aantonende het aantal bewoners in alle woningen en het gemiddelde aantal bewoners in woningen van 3, 4, 5 en 6 kamers in de voornaamste Stedelijke Gebieden van elke Provincie—Census 1918.

TABLE VII.—Showing the number of occupants in all dwellings, and the average number of occupants in dwellings of 3, 4, 5 and 6 rooms in the principal Urban Areas of each Province—Census 1918.

Towns.	Number of Occupants. Aantal Bewoners.						Steden.
	Total all Dwellings. Totaal alle Woningen.	Private Dwellings. Private Woningen.	Dwellings other than Private. Woningen anders dan Private.	Average number of Occupants. Gemiddelde aantal Bewoners.			
				3 Rooms. Kamers.	4 Rooms. Kamers.	5 Rooms. Kamers.	
<b>Cape of Good Hope</b>							<b>Kaap de Goede Hoop.</b>
Cape Town	82,815	64,935	17,880	4.3	5.0	4.8	Kaapstad.
Wynberg	7,752	7,005	747	4.2	5.1	4.7	Wynberg.
Parow	2,755	1,822	933	5.2	5.2	5.0	Parow.
Alwal North	2,635	2,422	213	4.3	5.0	4.6	Alwal North.
Beaufort West	793	612	181	4.4	5.2	4.6	Beaufort West.
Calvinia	2,404	2,216	188	4.6	5.1	4.6	Calvinia.
Cradoek	14,292	12,433	1,859	4.6	5.2	4.8	Cradoek.
East London	2,065	1,852	213	4.3	5.3	4.8	East London.
Cambridge	3,544	3,195	349	4.3	5.3	4.5	Cambridge.
Graaff-Reinet	4,765	4,222	543	4.0	4.5	4.2	Graaff-Reinet.
Grahamstown	16,157	14,026	2,131	4.2	4.8	4.2	Grahamstown.
Kimberley	5,278	4,651	627	4.3	4.5	4.8	Kimberley.
Kingwilliamstown	1,338	1,104	234	3.9	4.4	4.4	Kingwilliamstown.
Mafeking	2,372	2,027	345	4.7	5.0	4.5	Mafeking.
Mossel Bay	4,956	4,554	402	4.5	5.2	4.7	Mossel Bay.
Oudtshoorn	5,159	4,409	750	4.1	4.6	4.7	Oudtshoorn.
Paarl	2,983	2,627	356	4.0	4.9	4.7	Paarl.
Port Elizabeth	1,033	952	81	5.3	5.2	5.1	Port Elizabeth.
Wainier and Korsten	4,144	3,818	326	4.9	4.9	4.8	Wainier en Korsten.
Queenstown	2,479	2,063	416	4.5	5.1	4.9	Queenstown.
Robertson	1,867	1,056	811	3.7	4.0	4.0	Robertson.
Simonstown	2,753	2,006	747	4.2	4.7	4.8	Simonstown.
Somerset East	6,563	6,287	276	4.7	5.0	4.8	Somerset East.
Stellenbosch	1,114	950	164	4.2	4.6	4.5	Stellenbosch.
Uitenhage	1,180	1,020	160	4.8	5.1	4.9	Uitenhage.
Umtata	1,055	969	86	4.1	4.9	4.7	Umtata.
Uppington	3,285	2,659	626	4.4	4.8	4.7	Uppington.
Vryburg	72,270	64,172	8,098	4.6	5.1	4.7	Vryburg.
Wellington	287,094	246,114	40,980	4.4	5.1	4.9	Wellington.
Worcester	4,443	4,088	355	4.6	5.0	4.7	Worcester.
Other Urban Areas	13,111	11,970	1,141	4.4	5.1	4.9	Andere Stedelijke Gebieden.
<b>Total</b>	<b>287,094</b>	<b>246,114</b>	<b>40,980</b>	<b>4.4</b>	<b>5.1</b>	<b>4.9</b>	<b>Totaal.</b>



DWELLINGS—URBAN AREAS.—TABLE VII. (continued).

Towns.	Number of Occupants. Aantal Bewoners.				Average number of Occupants. Gemiddelde aantal Bewoners.				Steden.	
	Total Dwellings. Totaal alle Woningem.		Private Dwellings. Private Woningem.		Dwellings other than Private. Woningem anders dan Private.		All Dwellings. Alle Woningem.			
	No.	No.	No.	No.	No.	No.	No.	No.		
<b>Natal</b>										
Durban	40,535	30,618	9,917	3-9	4-6	5-1	5-5	4-9	5-2	6-1
Ladysmith	2,202	2,152	50	4-6	4-8	5-1	6-8	5-2	7-1	5-1
Newcastle	13,888	12,674	1,214	3-9	4-3	4-4	4-7	4-3	7-2	4-5
Pietermaritzburg	7,565	6,137	1,428	4-4	4-5	4-7	5-1	4-8	7-8	5-0
Other Urban Areas				4-0	4-6	5-0	5-5	4-6	4-9	4-9
<b>Total</b>	<b>65,355</b>	<b>52,638</b>	<b>12,717</b>							
<b>Transvaal</b>										
Johannesburg	134,220	112,619	21,601	4-4	5-0	5-5	6-0	4-9	8-7	5-2
Benoni	17,336	14,665	2,671	4-4	5-0	5-6	6-1	4-9	5-3	4-8
Krugersdorp	13,361	11,889	1,472	4-9	5-2	5-7	6-4	4-7	6-9	4-9
Boksburg	11,781	10,515	1,266	4-6	5-0	5-7	6-2	4-9	5-6	5-0
Rooftopoor	9,436	8,556	880	4-4	4-8	4-8	5-0	4-8	4-7	4-7
Prinsburg	2,155	1,687	468	4-5	4-9	4-9	5-2	4-9	4-8	4-7
Klerksdorp	2,036	1,789	247	4-9	5-6	5-9	7-2	5-9	10-2	7-0
Middelburg	2,272	1,971	301	4-8	5-3	5-2	5-8	5-0	4-7	5-0
Pietersburg	1,323	1,128	195	4-8	5-3	5-4	5-9	5-4	6-3	5-1
Portelstroom	88	84	4	4-7	5-0	5-0	5-5	5-0	7-9	5-1
Pretoria	2,824	2,407	417	4-7	5-0	5-5	6-3	5-0	5-5	5-3
Innesdale	6,976	6,762	214	5-1	5-6	5-7	6-3	5-4	5-1	5-1
Rustenburg	2,047	1,793	254	5-0	4-9	5-2	6-9	5-2	5-6	5-2
Standerton	1,561	1,443	118	4-9	5-1	5-4	6-6	5-3	5-6	5-2
Other Urban Areas	28,549	25,900	3,649	5-1	5-1	5-3	5-9	5-2	5-6	5-2
<b>Total</b>	<b>286,048</b>	<b>247,241</b>	<b>38,807</b>	<b>4-5</b>	<b>5-1</b>	<b>5-5</b>	<b>6-0</b>	<b>5-0</b>	<b>7-2</b>	<b>5-1</b>
<b>Orange Free State</b>										
Bloemfontein	12,545	10,367	2,178	4-5	5-2	5-7	6-1	5-3	8-0	5-7
Beaufort West	3,767	3,284	483	4-8	5-0	5-4	5-9	5-0	7-6	5-3
Kimberley	1,870	1,751	119	5-0	6-0	6-2	6-1	5-7	4-8	5-6
Harrismith	2,494	2,181	313	4-6	4-9	5-2	5-8	5-1	9-4	5-4
Jagersfontein	1,986	1,852	134	4-7	5-1	5-0	6-0	4-8	4-3	4-8
Kroonstad	3,355	2,280	1,075	4-8	5-1	6-9	6-3	5-3	6-9	5-4
Pharos	2,369	2,157	212	4-7	5-5	5-3	5-7	5-1	5-9	5-4
Other Urban Areas	29,260	22,784	6,476	5-0	5-5	5-3	5-7	5-2	5-7	5-2
<b>Total</b>	<b>50,706</b>	<b>44,919</b>	<b>5,787</b>	<b>4-8</b>	<b>5-3</b>	<b>5-5</b>	<b>6-0</b>	<b>5-2</b>	<b>6-6</b>	<b>5-3</b>
<b>Total Union of South Africa</b>	<b>685,203</b>	<b>590,912</b>	<b>98,291</b>	<b>4-5</b>	<b>5-0</b>	<b>5-2</b>	<b>5-6</b>	<b>4-9</b>	<b>7-5</b>	<b>5-2</b>

DWELLINGS—URBAN AREAS.

WONINGEN—STEEDELIKE GEBIEDEN.

TABLE VIII.—Number of rented private dwellings, showing the average monthly rental for dwellings of 3, 4, 5 and 6 rooms in the principal Urban Areas of each Province—Census 1918.

Towns.	Rented Dwellings of—Verhuurde Woningem van.				Average Monthly Rental—Gemiddelde Maandelikse Huur.						Steden.		
	Total Dwellings with Rent Specified. Woningem met huur gespecificeerd.		All other Dwellings. Alle andere Woningem.		3 Rooms. Kamers.		4 Rooms. Kamers.		5 Rooms. Kamers.			6 Rooms. Kamers.	
	No.	No.	No.	No.	£ s. d.	£ s. d.	£ s. d.	£ s. d.	£ s. d.	£ s. d.		£ s. d.	
<b>Cap of Good Hope</b>													
Cape Town	10,250	2,691	2,691	1,890	1,199	1,759	2 18 11	4 1 3	5 1 6	5 1 6	6 11 11	4 12 3	
Wynberg	1,093	293	276	178	110	327	3 3 4	4 0 1	4 0 1	4 0 1	5 12 0	3 1 5	
Parow	149	65	36	39	15	51	2 9 5	3 12 0	4 11 2	4 11 2	4 15 1	3 10 10	
Alwal North	220	54	61	46	12	65	2 0 3	2 14 4	3 10 3	3 17 2	3 14 8	3 14 8	
Beaufort West	352	76	153	46	6	37	3 6 0	3 17 0	4 0 0	4 0 0	5 13 6	3 19 8	
Stavrop	33	33	11	7	5	10	3 5 8	3 15 0	3 15 0	3 15 0	4 8 6	2 14 3	
East London	970	198	649	478	131	214	2 6 0	2 19 0	3 15 0	3 15 0	4 8 6	3 7 0	
Cambridge	297	32	115	107	21	92	2 6 0	2 2 0	2 14 1	2 14 1	2 15 10	1 18 0	
George	182	38	29	13	12	42	1 5 8	1 13 4	2 2 0	2 2 0	3 8 10	2 4 1	
Graaff-Reinet	365	72	126	79	43	75	1 7 5	2 2 0	2 13 2	2 13 2	3 4 4	2 4 1	
Kimberley	1,722	382	704	302	121	188	2 17 5	2 18 4	3 9 2	3 9 2	4 4 4	3 16 0	
Kingwilliamstown	1,708	152	712	402	121	184	2 17 11	2 17 11	3 12 0	3 12 0	4 19 10	3 12 1	
Koekstad	562	61	102	159	166	184	2 9 5	3 0 9	3 7 9	3 7 9	4 1 1	3 5 8	
Matieling	91	9	27	24	15	16	2 9 5	3 0 9	3 7 9	3 7 9	4 1 1	3 5 8	
Mossel Bay	304	42	100	26	14	22	2 11 10	2 19 5	4 1 7	4 1 7	4 13 2	3 3 5	
Oudtshoorn	509	157	166	44	24	94	1 18 11	2 12 9	3 12 11	3 12 11	4 0 7	2 14 1	
Paarl	511	129	144	103	53	184	1 18 11	2 5 6	3 6 6	3 6 6	4 10 3	3 16 11	
Port Elizabeth	2,843	652	974	566	258	393	2 11 11	3 8 0	4 14 2	4 14 2	5 14 4	3 16 11	
Wainier and Korsten	113	11	36	31	21	33	3 3 2	3 18 6	4 12 7	4 12 7	5 11 5	4 7 8	
Queenstown	102	29	18	43	3	43	1 18 0	3 0 0	3 8 10	3 8 10	4 16 1	2 11 3	
Simonsfontein	47	130	130	100	35	40	7 1 3	3 10 2	4 12 5	4 12 5	4 19 3	3 16 0	
Simonstown	205	56	62	41	16	27	2 7 8	2 18 10	3 13 0	3 13 0	4 19 3	3 3 4	
Stellenbosch	200	32	47	43	25	53	1 9 10	2 1 4	3 5 9	3 5 9	4 7 5	2 10 4	
Uitenhage	214	200	202	128	67	128	2 0 2	3 6 7	3 17 4	3 17 4	4 11 0	3 12 0	
Uitvallei	543	200	202	128	67	128	2 0 2	3 6 7	3 17 4	3 17 4	4 11 0	3 12 0	
Uitvallei	198	30	28	14	3	40	3 3 2	3 3 2	4 3 1	4 3 1	5 0 10	3 12 0	
Vrystaat	95	17	31	14	13	20	2 4 2	2 13 6	3 16 0	3 16 0	4 7 2	3 12 0	
Wellington	206	39	71	36	20	40	1 14 2	2 8 2	3 16 0	3 16 0	4 7 2	2 9 7	
Worcester	312	65	102	63	31	63	1 18 1	2 7 3	3 12 0	3 12 0	4 6 1	2 15 0	
Other Urban Areas	5,975	1,451	1,479	1,065	520	1,460	1 12 4	2 7 3	3 12 0	3 12 0	4 6 1	2 15 0	
<b>Total</b>	<b>31,429</b>	<b>7,311</b>	<b>9,205</b>	<b>6,010</b>	<b>3,076</b>	<b>5,927</b>	<b>2 8 3</b>	<b>3 4 10</b>	<b>4 6 11</b>	<b>4 6 11</b>	<b>5 5 6</b>	<b>3 10 2</b>	



DWELLINGS—URBAN AREAS.—TABLE VIII. (continued).

Towns.	Total Dwellings with Rent Specified.	Rented Dwellings of—Verhuurde Woningen van.					All other Dwellings.	Average Monthly Rental—Gemiddelde Maandelijke Huur.					Steden.
		3 Rooms.	4 Rooms.	5 Rooms.	6 Rooms.	Other Dwellings.		3 Rooms.	4 Rooms.	5 Rooms.	6 Rooms.	Average Gemiddelde 3-6 Rooms.	
<b>Natal.</b>	3,820	388	1,017	1,152	690	663	3 17 8	4 13 8	5 14 10	6 14 8	5 s. d.	Durban.	
Ladysmith	284	108	108	32	28	5	3 19 7	3 19 7	3 15 10	5 7 3	Ladysmith.		
Pietermaritzburg	1,553	149	562	482	221	25	3 11 8	4 10 7	5 8 7	3 4 0	Pietermaritzburg.		
Other Urban Areas	677	114	206	188	80	89	2 9 5	3 1 3	3 13 4	3 5 11	Andere Stedelijke Gebieden.		
<b>Total</b>	<b>6,568</b>	<b>712</b>	<b>1,933</b>	<b>1,914</b>	<b>929</b>	<b>1,080</b>	<b>3 7 3</b>	<b>4 1 9</b>	<b>5 2 10</b>	<b>4 14 1</b>	<b>Totaal.</b>		
<b>Transvaal.</b>	14,716	5,023	4,508	1,610	688	2,887	4 16 5	5 17 4	8 1 7	5 19 3	Johannesburg.		
Johannesburg	2,379	905	857	163	47	407	4 11 7	4 17 6	5 10 7	6 18 1	Germiston.		
Benoni	2,338	946	721	177	22	496	5 3 4	5 7 11	6 2 0	7 10 8	Benoni.		
Krugersdorp	1,353	759	594	160	31	247	4 13 11	4 9 10	5 15 0	7 2 2	Krugersdorp.		
Rosburg	957	377	328	80	28	142	4 2 8	4 13 3	4 17 4	5 19 10	Rosburg.		
Springfontein	875	136	112	40	3	73	5 4 2	4 19 2	4 19 2	7 7 3	Springfontein.		
Ermedo	137	41	37	23	7	29	3 13 9	4 17 0	5 5 9	6 1 11	Ermedo.		
Klerksdorp	216	57	64	38	13	44	3 9 9	3 8 6	4 7 8	4 2 0	Klerksdorp.		
Middelburg	306	45	59	33	15	59	3 5 4	3 5 4	4 5 0	5 11 3	Middelburg.		
Pretoriusburg	571	173	173	93	34	138	3 5 2	4 10 4	5 5 9	5 11 3	Pretoriusburg.		
Potchefstroom	2,759	688	986	459	178	448	4 11 9	6 0 3	4 8 6	5 5 9	Potchefstroom.		
Immedale	451	159	115	29	9	139	2 13 4	3 7 3	3 18 3	5 4 10	Immedale.		
Rustenburg	151	38	47	33	11	32	2 18 8	4 0 3	6 2 5	9 19 0	Rustenburg.		
Standerton	124	27	46	30	11	27	3 10 7	3 10 7	4 1 9	4 7 5	Standerton.		
Other Urban Areas	2,240	678	609	308	94	593	2 19 1	3 0 7	4 1 9	4 7 5	Andere Stedelijke Gebieden.		
<b>Total</b>	<b>30,791</b>	<b>10,625</b>	<b>9,773</b>	<b>3,342</b>	<b>1,242</b>	<b>5,809</b>	<b>4 9 5</b>	<b>5 6 0</b>	<b>6 17 6</b>	<b>8 12 5</b>	<b>Totaal.</b>		
<b>Orange Free State.</b>	1,388	308	507	177	83	313	4 4 9	5 3 9	6 18 0	7 10 1	Oranje Vrijstaat.		
Beaufort	324	80	58	36	9	41	3 3 7	4 2 7	4 12 7	5 15 11	Beaufort.		
Ficksburg	109	21	34	18	8	28	1 9 11	2 15 1	2 19 9	4 0 10	Ficksburg.		
Harrismith	197	32	68	48	19	30	3 14 9	3 13 5	4 4 4	3 19 0	Harrismith.		
Jagersfontein	267	91	70	45	11	47	3 5 3	3 19 9	3 10 1	3 14 7	Jagersfontein.		
Koonstad	188	44	101	55	15	62	1 8 0	2 15 6	3 1 3	2 10 7	Koonstad.		
Other Urban Areas	1,785	515	456	236	100	478	2 0 5	2 16 10	3 8 9	3 16 6	Andere Stedelijke Gebieden.		
<b>Total</b>	<b>4,462</b>	<b>1,184</b>	<b>1,355</b>	<b>625</b>	<b>250</b>	<b>1,048</b>	<b>2 15 8</b>	<b>3 17 6</b>	<b>4 11 8</b>	<b>5 3 3</b>	<b>Totaal Unie van Zuid Afrika</b>		
<b>Total Union of South Africa</b>	<b>73,250</b>	<b>19,932</b>	<b>22,286</b>	<b>11,891</b>	<b>5,497</b>	<b>13,764</b>	<b>3 11 6</b>	<b>4 5 2</b>	<b>5 3 11</b>	<b>6 3 4</b>	<b>4 7 11</b>		

DWELLINGS—URBAN AREAS.

TABLE IX.—Number of private dwellings (excluding residential flats, and private dwellings and business premises combined) occupied by Europeans in the principal Urban Areas of the Union, classified according to the monthly rental and the number of living-rooms.—Census 1918.

Monthly Rental. Maandelijke Huur.	Cape Town and Suburbs. Kaapstad en Voorsteden.						Cape Town Municipality. Kaapstad Munisipaliteit.						Wynberg Municipality. Wynberg Munisipaliteit.						Parow V.M.B. Parow D.B.R.						Kimberley Municipality. Kimberley Munisipaliteit.							
	3.	4.	5.	6.	7.	8.	3.	4.	5.	6.	7.	8.	3.	4.	5.	6.	7.	8.	3.	4.	5.	6.	7.	8.	3.	4.	5.	6.	7.	8.		
Under—Beneden £1	19	183	37	1	1	1	13	10	2	1	1	1	5	3	3	1	1	1	1	1	1	1	1	1	1	1	1	1	1	1	1	
£1 and under—en beneden	309	1,445	87	13	13	1	165	133	67	8	8	3	62	27	27	4	4	4	4	4	4	4	4	4	4	4	4	4	4	4	4	
£1 to £2	1,445	972	962	321	191	100	1,280	428	205	76	76	167	31	31	102	56	48	24	24	24	24	24	24	24	24	24	24	24	24	24	24	
£2 to £3	178	654	462	301	208	100	939	613	413	337	337	167	7	7	41	48	28	28	28	28	28	28	28	28	28	28	28	28	28	28	28	
£3 to £4	27	133	301	208	100	100	65	326	391	237	237	138	2	2	11	17	14	14	14	14	14	14	14	14	14	14	14	14	14	14	14	
£4 to £5	16	90	108	132	132	100	138	138	138	138	138	138	1	1	2	3	3	3	3	3	3	3	3	3	3	3	3	3	3	3	3	3
£5 to £6	9	52	45	55	55	55	55	55	55	55	55	55	1	1	1	1	1	1	1	1	1	1	1	1	1	1	1	1	1	1	1	1
£6 to £7	3	12	45	55	55	55	3	3	3	3	3	3	1	1	1	1	1	1	1	1	1	1	1	1	1	1	1	1	1	1	1	1
£7 to £8	4	24	60	60	60	60	24	24	24	24	24	24	1	1	1	1	1	1	1	1	1	1	1	1	1	1	1	1	1	1	1	1
£8 to £9	—	7	25	33	33	33	7	7	7	7	7	7	—	—	—	—	—	—	—	—	—	—	—	—	—	—	—	—	—	—	—	—
£9 to £10	—	3	3	3	3	3	—	—	—	—	—	—	—	—	—	—	—	—	—	—	—	—	—	—	—	—	—	—	—	—	—	—
£10 and over—en daar boven	—	4	2	2	2	2	4	4	4	4	4	4	—	—	—	—	—	—	—	—	—	—	—	—	—	—	—	—	—	—	—	—
Rent Specified—Huur Gespesifiseer	3,049	3,003	2,077	1,318	2,691	2,691	2,691	2,691	2,691	2,691	2,691	2,691	293	276	178	119	65	36	9	36	36	36	36	36	36	36	36	36	36	36	36	36
Rent Unspecified—Huur Ongespesifiseer	—	—	—	—	—	—	—	—	—	—	—	—	—	—	—	—	—	—	—	—	—	—	—	—	—	—	—	—	—	—	—	—
Owned by Occupier—Eigendom van Bewoner	280	547	697	637	215	453	602	569	36	66	74	63	29	28	21	5	—	—	—	—	—	—	—	—	—	—	—	—	—	—	—	—
Total Private Dwellings—Totaal Private Woningen	3,381	3,608	2,817	1,947	2,950	3,195	2,558	1,803	336	348	258	189	95	66	31	5	—	—	—	—	—	—	—	—	—	—	—	—	—	—	—	—
Average Monthly Rental—Gemiddelde Maandelijke Huur	£ 2 10 11	£ 3 18 11	£ 5 8 2	£ 6 10 2	£ 2 18 11	£ 4 1 3	£ 5 1 6	£ 6 11 11	£ 3 9 3	£ 4 5 6	£ 5 5 12	£ 0 1 11	£ 1 11 4	£ 1 19 1	£ 2 4 5	—	—	—	—	—	—	—	—	—	—	—	—	—	—	—	—	—
Average Monthly Rental	£ 4 5 5	£ 4 5 5	£ 4 5 5	£ 4 5 5	£ 4 5 5	£ 4 5 5	£ 4 5 5	£ 4 5 5	£ 4 5 5	£ 4 5 5	£ 4 5 5	£ 4 5 5	£ 4 5 5	£ 4 5 5	£ 4 5 5	£ 4 5 5	£ 4 5 5	£ 4 5 5	£ 4 5 5	£ 4 5 5	£ 4 5 5	£ 4 5 5	£ 4 5 5	£ 4 5 5	£ 4 5 5	£ 4 5 5	£ 4 5 5	£ 4 5 5	£ 4 5 5	£ 4 5 5	£ 4 5 5	£ 4 5 5
Gemiddelde Maandelijke Huur	£ 4 5 5	£ 4 5 5	£ 4 5 5	£ 4 5 5	£ 4 5 5	£ 4 5 5	£ 4 5 5	£ 4 5 5	£ 4 5 5	£ 4 5 5	£ 4 5 5	£ 4 5 5	£ 4 5 5	£ 4 5 5	£ 4 5 5	£ 4 5 5	£ 4 5 5	£ 4 5 5	£ 4 5 5	£ 4 5 5	£ 4 5 5	£ 4 5 5	£ 4 5 5	£ 4 5 5	£ 4 5 5	£ 4 5 5	£ 4 5 5	£ 4 5 5	£ 4 5 5	£ 4 5 5	£ 4 5 5	£ 4 5 5



WONINGEN—STEDELIKE GEBIEDEN.—TABEL IX. (vervolg).

	Port Elizabeth and Suburbs. Port Elizabeth en Voorsteden.						Port Elizabeth Municipality. Port Elizabeth Munisipaliteit.						Walmer and Korsten. Walmer en Korsten.						Ultenhage Municipality. Ultenhage Munisipaliteit.						Grahamstown.									
	3.		4.		6.		3.		4.		6.		3.		4.		6.		3.		4.		6.		3.		4.		6.					
	£ s. d.		£ s. d.		£ s. d.		£ s. d.		£ s. d.		£ s. d.		£ s. d.		£ s. d.		£ s. d.		£ s. d.		£ s. d.		£ s. d.		£ s. d.		£ s. d.							
Under-Beneden £1	80	16	3	16	3	5	3	70	3	19	3	1	1	4	1	2	1	5	1	65	5	24	2	3	3	4	4	55	4	16	2			
£1 and under—en beneden	398	285	172	398	285	142	37	390	98	19	70	3	1	2	4	146	5	169	11	133	2	47	1	13	3	29	1	41	1	29	10			
£2	139	162	129	139	162	46	142	135	410	37	142	4	12	12	6	11	2	11	11	2	2	17	13	23	17	8	29	29	40	11	7			
£3	15	15	82	15	15	54	20	14	76	42	121	2	12	1	1	3	3	3	3	2	2	10	10	1	1	16	16	22	22	14	9			
£4	11	11	25	11	11	38	28	11	23	104	20	2	2	2	2	1	1	1	1	1	1	4	4	1	1	1	1	4	4	2	2			
£5	1	1	8	1	1	35	25	1	23	33	28	1	1	2	2	1	1	1	1	1	1	2	2	1	1	1	1	4	4	1	1			
£6	1	1	4	1	1	11	11	1	4	21	14	1	1	1	1	1	1	1	1	1	1	1	1	1	1	1	1	1	1	1	1			
£7	1	1	1	1	1	3	3	1	1	5	5	1	1	1	1	1	1	1	1	1	1	1	1	1	1	1	1	1	1	1	1			
£8	1	1	1	1	1	3	3	1	1	7	7	1	1	1	1	1	1	1	1	1	1	1	1	1	1	1	1	1	1	1	1			
£9	1	1	1	1	1	1	1	1	1	1	1	1	1	1	1	1	1	1	1	1	1	1	1	1	1	1	1	1	1	1	1			
£10	1	1	1	1	1	1	1	1	1	1	1	1	1	1	1	1	1	1	1	1	1	1	1	1	1	1	1	1	1	1	1			
£11	1	1	1	1	1	1	1	1	1	1	1	1	1	1	1	1	1	1	1	1	1	1	1	1	1	1	1	1	1	1	1			
£12	1	1	1	1	1	1	1	1	1	1	1	1	1	1	1	1	1	1	1	1	1	1	1	1	1	1	1	1	1	1	1			
£13	1	1	1	1	1	1	1	1	1	1	1	1	1	1	1	1	1	1	1	1	1	1	1	1	1	1	1	1	1	1	1			
£14	1	1	1	1	1	1	1	1	1	1	1	1	1	1	1	1	1	1	1	1	1	1	1	1	1	1	1	1	1	1	1			
£15 and over—en daar boven	663	1,010	597	663	1,010	279	566	652	974	258	566	11	36	31	21	262	126	200	262	111	12	67	4	107	154	132	6	51	4	132	6			
Rent Specified—Huur Gespesifiseerd	7	20	12	7	20	5	12	7	19	5	12	—	—	—	—	—	—	—	—	—	—	—	—	—	—	—	—	—	—	—	—			
Rent Unspecified—Huur Ongespesifiseerd	86	216	242	86	216	158	207	81	190	122	207	5	26	35	36	35	36	35	35	26	35	36	36	34	86	125	88	34	86	125	88			
Owned by Occupier—Eigendom van Bewoner	756	1,246	861	756	1,246	442	785	740	1,183	385	785	16	63	66	57	306	373	206	373	16	63	66	57	142	243	283	138	142	243	283	138			
Total Private Dwellings—Totaal Private Woningen	£ s. d.	£ s. d.	£ s. d.	£ s. d.	£ s. d.	£ s. d.	£ s. d.	£ s. d.	£ s. d.	£ s. d.	£ s. d.	£ s. d.	£ s. d.	£ s. d.	£ s. d.	£ s. d.	£ s. d.	£ s. d.	£ s. d.	£ s. d.	£ s. d.	£ s. d.	£ s. d.	£ s. d.	£ s. d.	£ s. d.	£ s. d.	£ s. d.	£ s. d.	£ s. d.	£ s. d.	£ s. d.		
Average Monthly Rental—Gemiddelde Maandelikse Huur	2 12 4	3 9 0	4 11 6	2 11 11	3 8 9	4 14 2	5 14 4	2 11 11	3 8 9	4 14 2	5 14 4	3 3 2	4 12 7	5 11 3	2 0 2	2 12 6	3 8 3	3 17 0	1 17 5	2 0 2	2 12 6	3 8 3	3 17 0	1 17 5	2 0 2	2 12 6	3 8 3	3 17 0	1 17 5	2 0 2	2 12 6	3 8 3	3 17 0	
Average Monthly Rental Rooms 3-6 Kamers	£ s. d.	£ s. d.	£ s. d.	£ s. d.	£ s. d.	£ s. d.	£ s. d.	£ s. d.	£ s. d.	£ s. d.	£ s. d.	£ s. d.	£ s. d.	£ s. d.	£ s. d.	£ s. d.	£ s. d.	£ s. d.	£ s. d.	£ s. d.	£ s. d.	£ s. d.	£ s. d.	£ s. d.	£ s. d.	£ s. d.	£ s. d.	£ s. d.	£ s. d.	£ s. d.	£ s. d.	£ s. d.	£ s. d.	£ s. d.
Gemiddelde Maandelikse Huur Rooms 3-6 Kamers	3 17 5	4 7 5	5 16 11	3 16 11	4 7 8	5 12 11	6 10 0	3 17 5	4 7 8	5 16 11	6 10 0	4 7 8	5 12 11	6 10 0	3 17 5	4 7 8	5 12 11	6 10 0	3 17 5	4 7 8	5 12 11	6 10 0	3 17 5	4 7 8	5 12 11	6 10 0	3 17 5	4 7 8	5 12 11	6 10 0	3 17 5	4 7 8	5 12 11	6 10 0

WONINGEN—STEDELIKE GEBIEDEN.—TABEL IX. (vervolg).

	East London and Suburbs. E. st. London en Voorsteden.						East London Municipality. East London Munisipaliteit.						Cambridge Municipality. Cambridge Munisipaliteit.						Paarl.						Kingwilliamstown.									
	3.		4.		5.		6.		3.		4.		5.		6.		3.		4.		5.		6.		3.		4.		5.		6.			
	£ s. d.		£ s. d.		£ s. d.		£ s. d.		£ s. d.		£ s. d.		£ s. d.		£ s. d.		£ s. d.		£ s. d.		£ s. d.		£ s. d.		£ s. d.		£ s. d.		£ s. d.					
Under-Beneden £1	5	1	1	1	1	1	1	1	1	1	1	1	1	1	1	1	1	1	1	1	1	1	1	1	1	1	1	1	1	1	1			
£1 and under—en beneden	182	39	12	182	39	12	12	11	12	11	10	1	1	1	1	1	1	1	1	1	1	1	1	1	1	1	1	1	1	1	1			
£2	84	179	71	84	179	71	77	26	77	18	89	1	32	30	33	4	4	7	7	1	1	1	1	1	1	1	1	1	1	1	1			
£3	22	209	111	22	209	111	21	25	21	13	106	1	14	7	7	5	5	1	1	1	1	1	1	1	1	1	1	1	1	1	1			
£4	9	193	108	9	193	108	69	23	9	19	94	1	5	14	14	4	4	1	1	1	1	1	1	1	1	1	1	1	1	1	1			
£5	2	24	62	2	24	62	21	21	2	22	64	2	2	2	2	2	2	1	1	1	1	1	1	1	1	1	1	1	1	1	1			
£6	1	1	1	1	1	1	1	1	1	1	1	1	1	1	1	1	1	1	1	1	1	1	1	1	1	1	1	1	1	1	1			
£7	1	1	1	1	1	1	1	1	1	1	1	1	1	1	1	1	1	1	1	1	1	1	1	1	1	1	1	1	1	1	1			
£8	1	1	1	1	1	1	1	1	1	1	1	1	1	1	1	1	1	1	1	1	1	1	1	1	1	1	1	1	1	1	1			
£9	1	1	1	1	1	1	1	1	1	1	1	1	1	1	1	1	1	1	1	1	1	1	1	1	1	1	1	1	1	1	1			
£10	1	1	1	1	1	1	1	1	1	1	1	1	1	1	1	1	1	1	1	1	1	1	1	1	1	1	1	1	1	1	1			
£11	1	1	1	1	1	1	1	1	1	1	1	1	1	1	1	1	1	1	1	1	1	1	1	1	1	1	1	1	1	1	1			
£12	1	1	1	1	1	1	1	1	1	1	1	1	1	1	1	1	1	1	1	1	1	1	1	1	1	1	1	1	1	1	1			
£13	1	1	1	1	1	1	1	1	1	1	1	1	1	1	1	1	1	1	1	1	1	1	1	1	1	1	1	1	1	1	1			
£14	1	1	1	1	1	1	1	1	1	1	1	1	1	1	1	1	1	1	1	1	1	1	1	1	1	1	1	1	1	1	1			
£15 and over—en daar boven	230	764	585	230	764	585	152	198	649	478	131	32	115	107	21	144	101	129	144	32	115	107	21	61	192	159	66	61	192	159	66			
Rent Specified—Huur Gespesifiseerd	6	15	14	6	15	14	12	6	14	8	9	—	—	—	—	—	—	—	—	—	—	—	—	—	—	—	—	—	—	—	—			
Rent Unspecified—Huur Ongespesifiseerd	67	273	293	67	273	293	129	33	182	194	95	34	91	99	84	15	39	63	15	34	91	99	84	16	59	140	70	16	59	140	70			
Owned by Occupier—Eigendom van Bewoner	303	1,052	892	303	1,052	892	293	237	845	680	235	66	207	212	58	148	192	148	66	207	212	58	148	82	260	397	138	82	260	397	138			
Total Private Dwellings—Totaal Private Woningen	£ s. d.	£ s. d.	£ s. d.	£ s. d.	£ s. d.	£ s. d.	£ s. d.	£ s. d.	£ s. d.	£ s. d.	£ s. d.	£ s. d.	£ s. d.	£ s. d.	£ s. d.	£ s. d.	£ s. d.	£ s. d.	£ s. d.	£ s. d.	£ s. d.	£ s. d.	£ s. d.	£ s. d.	£ s. d.	£ s. d.	£ s. d.	£ s. d.	£ s. d.	£ s. d.	£ s. d.	£ s. d.	£ s. d.	£ s. d.
Average Monthly Rental—Gemiddelde Maandelikse Huur	3 0 0	3 13 4	4 15 0	3 0 0	3 13 4	4 15 0	5 13 0	3 2 3	3 15 9	4 19 6	5 16 5	2 6 0	2 19 9	3 15 1	4 8 6	1 16 8	2 6 6	2 18 0	3 11 3	2 3 1	2 17 11	3 12 10	2 3 1	2 17 11	3 12 10	2 3 1	2 17 11							



DWELLINGS—URBAN AREAS.—TABLE IX. (continued).

Monthly Rental. Maandelijke Huur.	Outeboorn.						Queenstown.						Simonstown.						Graaff-Reinet.						Worcester.												
	Number of Rooms.						Number of Rooms.						Number of Rooms.						Number of Rooms.						Number of Rooms.												
	3.	4.	5.	6.	3.	4.	3.	4.	5.	6.	3.	4.	3.	4.	5.	6.	3.	4.	3.	4.	5.	6.	3.	4.	3.	4.	5.	6.	3.	4.							
Under-Beneden £1	90	4	11	1	3	1	1	8	72	120	100	35	1	2	2	1	1	1	1	2	2	2	1	1	1	2	2	1	1	1	1	1	2	2	1	1	1
£1 and under—en	38	69	28	15	31	35	31	34	34	34	34	18	18	18	18	18	18	18	18	18	18	18	18	18	18	18	18	18	18	18	18	18	18	18	18	18	
£2	33	57	24	10	27	30	27	30	32	32	32	10	10	10	10	10	10	10	10	10	10	10	10	10	10	10	10	10	10	10	10	10	10	10	10	10	
£3	5	14	5	4	4	4	4	4	4	4	4	4	4	4	4	4	4	4	4	4	4	4	4	4	4	4	4	4	4	4	4	4	4	4	4	4	
£4	1	6	5	4	4	4	4	4	4	4	4	4	4	4	4	4	4	4	4	4	4	4	4	4	4	4	4	4	4	4	4	4	4	4	4	4	
£5																																					
£6																																					
£7																																					
£8																																					
£9																																					
£10																																					
£11																																					
£12																																					
£13																																					
£14																																					
£15 and over—en daar boven																																					
Rent Specified—Huur Gespecificeerd	157	180	93	51	72	72	72	72	72	72	72	35	35	35	35	35	35	35	35	35	35	35	35	35	35	35	35	35	35	35	35	35	35	35	35	35	
Rent Unspecified—Huur Ongespecificeerd	8	7	4	7	5	5	5	5	5	5	5	3	3	3	3	3	3	3	3	3	3	3	3	3	3	3	3	3	3	3	3	3	3	3	3	3	
Owned by Occupier—Eigendom van Bewoner	48	62	59	46	22	22	22	22	22	22	22	72	72	72	72	72	72	72	72	72	72	72	72	72	72	72	72	72	72	72	72	72	72	72	72	72	
Total Private Dwellings—Totaal Private Woningen	213	249	156	104	99	99	99	99	99	99	99	110	110	110	110	110	110	110	110	110	110	110	110	110	110	110	110	110	110	110	110	110	110	110	110	110	
Average Monthly Rental—Gemiddelde Maandelijke Huur	£ s. d.	£ s. d.	£ s. d.	£ s. d.	£ s. d.	£ s. d.	£ s. d.	£ s. d.	£ s. d.	£ s. d.	£ s. d.	£ s. d.	£ s. d.	£ s. d.	£ s. d.	£ s. d.	£ s. d.	£ s. d.	£ s. d.	£ s. d.	£ s. d.	£ s. d.	£ s. d.	£ s. d.	£ s. d.	£ s. d.	£ s. d.	£ s. d.	£ s. d.	£ s. d.	£ s. d.	£ s. d.	£ s. d.	£ s. d.	£ s. d.	£ s. d.	£ s. d.
Average Monthly Rental 3-6 Rooms	£ s. d.	£ s. d.	£ s. d.	£ s. d.	£ s. d.	£ s. d.	£ s. d.	£ s. d.	£ s. d.	£ s. d.	£ s. d.	£ s. d.	£ s. d.	£ s. d.	£ s. d.	£ s. d.	£ s. d.	£ s. d.	£ s. d.	£ s. d.	£ s. d.	£ s. d.	£ s. d.	£ s. d.	£ s. d.	£ s. d.	£ s. d.	£ s. d.	£ s. d.	£ s. d.	£ s. d.	£ s. d.	£ s. d.	£ s. d.	£ s. d.	£ s. d.	
Gemiddelde Maandelijke Huur 3-6 Kamers	£ s. d.	£ s. d.	£ s. d.	£ s. d.	£ s. d.	£ s. d.	£ s. d.	£ s. d.	£ s. d.	£ s. d.	£ s. d.	£ s. d.	£ s. d.	£ s. d.	£ s. d.	£ s. d.	£ s. d.	£ s. d.	£ s. d.	£ s. d.	£ s. d.	£ s. d.	£ s. d.	£ s. d.	£ s. d.	£ s. d.	£ s. d.	£ s. d.	£ s. d.	£ s. d.	£ s. d.	£ s. d.	£ s. d.	£ s. d.	£ s. d.	£ s. d.	£ s. d.

[U.G. 55—'20.]

DWELLINGS—URBAN AREAS.—TABLE IX. (continued).

Monthly Rental. Maandelijke Huur.	Stellenbosch.						Cradock.						Beaufort West.						Robertson.						Wellington.												
	Number of Rooms.						Number of Rooms.						Number of Rooms.						Number of Rooms.						Number of Rooms.												
	3.	4.	5.	6.	3.	4.	3.	4.	5.	6.	3.	4.	3.	4.	5.	6.	3.	4.	3.	4.	5.	6.	3.	4.	3.	4.	5.	6.	3.	4.							
Under-Beneden £1	7	17	3	1	2	1	1	14	27	66	111	73	25	26	26	26	26	26	26	26	26	26	26	26	26	26	26	26	26	26	26	26	26	26	26	26	26
£1 and under—en	11	24	18	9	9	9	9	9	9	9	9	9	9	9	9	9	9	9	9	9	9	9	9	9	9	9	9	9	9	9	9	9	9	9	9	9	
£2	2	8	4	3	3	3	3	3	3	3	3	3	3	3	3	3	3	3	3	3	3	3	3	3	3	3	3	3	3	3	3	3	3	3	3	3	
£3	3	12	8	10	10	10	10	10	10	10	10	10	10	10	10	10	10	10	10	10	10	10	10	10	10	10	10	10	10	10	10	10	10	10	10	10	
£4	1	1	1	1	1	1	1	1	1	1	1	1	1	1	1	1	1	1	1	1	1	1	1	1	1	1	1	1	1	1	1	1	1	1	1	1	
£5																																					
£6																																					
£7																																					
£8																																					
£9																																					
£10																																					
£11																																					
£12																																					
£13																																					
£14																																					
£15 and over—en daar boven																																					
Rent Specified—Huur Gespecificeerd	25	53	43	37	37	37	37	37	37	37	37	25	25	25	25	25	25	25	25	25	25	25	25	25	25	25	25	25	25	25	25	25	25	25	25	25	
Rent Unspecified—Huur Ongespecificeerd	2	2	1	1	1	1	1	1	1	1	1	3	3	3	3	3	3	3	3	3	3	3	3	3	3	3	3	3	3	3	3	3	3	3	3	3	
Owned by Occupier—Eigendom van Bewoner	7	9	21	33	33	33	33	33	33	33	33	28	28	28	28	28	28	28	28	28	28	28	28	28	28	28	28	28	28	28	28	28	28	28	28	28	
Total Private Dwellings—Totaal Private Woningen	34	64	65	71	37	37	37	37	37	37	37	56	56	56	56	56	56	56	56	56	56	56	56	56	56	56	56	56	56	56	56	56	56	56	56	56	
Average Monthly Rental—Gemiddelde Maandelijke Huur	£ s. d.	£ s. d.	£ s. d.	£ s. d.	£ s. d.	£ s. d.	£ s. d.	£ s. d.	£ s. d.	£ s. d.	£ s. d.	£ s. d.	£ s. d.	£ s. d.	£ s. d.	£ s. d.	£ s. d.	£ s. d.	£ s. d.	£ s. d.	£ s. d.	£ s. d.	£ s. d.	£ s. d.	£ s. d.	£ s. d.	£ s. d.	£ s. d.	£ s. d.	£ s. d.	£ s. d.	£ s. d.	£ s. d.	£ s. d.	£ s. d.	£ s. d.	£ s. d.
Average Monthly Rental 3-6 Rooms	£ s. d.	£ s. d.	£ s. d.	£ s. d.	£ s. d.	£ s. d.	£ s. d.	£ s. d.	£ s. d.	£ s. d.	£ s. d.	£ s. d.	£ s. d.	£ s. d.	£ s. d.	£ s. d.	£ s. d.	£ s. d.	£ s. d.	£ s. d.	£ s. d.	£ s. d.	£ s. d.	£ s. d.	£ s. d.	£ s. d.	£ s. d.	£ s. d.	£ s. d.	£ s. d.	£ s. d.	£ s. d.	£ s. d.	£ s. d.	£ s. d.	£ s. d.	£ s. d.
Gemiddelde Maandelijke Huur 3-6 Kamers	£ s. d.	£ s. d.	£ s. d.	£ s. d.	£ s. d.	£ s. d.	£ s. d.	£ s. d.	£ s. d.	£ s. d.	£ s. d.	£ s. d.	£ s. d.	£ s. d.	£ s. d.	£ s. d.	£ s. d.	£ s. d.	£ s. d.	£ s. d.	£ s. d.	£ s. d.	£ s. d.	£ s. d.	£ s. d.	£ s. d.	£ s. d.	£ s. d.	£ s. d.	£ s. d.	£ s. d.	£ s. d.	£ s. d.	£ s. d.	£ s. d.	£ s. d.	£ s. d.

D







WONINGEN—STEDELIKE GEBIEDEN.—TABEL IX. (vervolg).

Monthly Rental. Maandelijke Huur.	Kokstad.						Durban Borough. Durban Municipaliteit.						Durban Rural Suburbs. Durban Landelike Voorsteden.						Pietermaritzburg.											
	Number of Rooms.						Number of Rooms.						Aantal Kamers.						Aantal Kamers.											
	3.	4.	5.	6.	7.	8.	3.	4.	5.	6.	7.	8.	3.	4.	5.	6.	7.	8.	3.	4.	5.	6.	7.	8.						
Under-Beneden £1	1	7	1	1	2	2	1	14	10	2	2	2	1	1	1	1	1	1	1	14	7	5	1	1	1	12	11	4	4	6
£1 and under—en beneden	1	1	1	1	2	2	1	14	10	2	2	2	1	1	1	1	1	1	1	14	7	5	1	1	1	12	11	4	4	6
£2	1	1	1	1	2	2	1	14	10	2	2	2	1	1	1	1	1	1	1	14	7	5	1	1	1	12	11	4	4	6
£3	1	1	1	1	2	2	1	14	10	2	2	2	1	1	1	1	1	1	1	14	7	5	1	1	1	12	11	4	4	6
£4	1	1	1	1	2	2	1	14	10	2	2	2	1	1	1	1	1	1	1	14	7	5	1	1	1	12	11	4	4	6
£5	1	1	1	1	2	2	1	14	10	2	2	2	1	1	1	1	1	1	1	14	7	5	1	1	1	12	11	4	4	6
£6	1	1	1	1	2	2	1	14	10	2	2	2	1	1	1	1	1	1	1	14	7	5	1	1	1	12	11	4	4	6
£7	1	1	1	1	2	2	1	14	10	2	2	2	1	1	1	1	1	1	1	14	7	5	1	1	1	12	11	4	4	6
£8	1	1	1	1	2	2	1	14	10	2	2	2	1	1	1	1	1	1	1	14	7	5	1	1	1	12	11	4	4	6
£9	1	1	1	1	2	2	1	14	10	2	2	2	1	1	1	1	1	1	1	14	7	5	1	1	1	12	11	4	4	6
£10	1	1	1	1	2	2	1	14	10	2	2	2	1	1	1	1	1	1	1	14	7	5	1	1	1	12	11	4	4	6
£11	1	1	1	1	2	2	1	14	10	2	2	2	1	1	1	1	1	1	1	14	7	5	1	1	1	12	11	4	4	6
£12	1	1	1	1	2	2	1	14	10	2	2	2	1	1	1	1	1	1	1	14	7	5	1	1	1	12	11	4	4	6
£13	1	1	1	1	2	2	1	14	10	2	2	2	1	1	1	1	1	1	1	14	7	5	1	1	1	12	11	4	4	6
£14	1	1	1	1	2	2	1	14	10	2	2	2	1	1	1	1	1	1	1	14	7	5	1	1	1	12	11	4	4	6
£15 and over—en daar boven	1	1	1	1	2	2	1	14	10	2	2	2	1	1	1	1	1	1	1	14	7	5	1	1	1	12	11	4	4	6
Rent Specified—Huur Gespesifieerd	9	27	24	15	452	1,178	1,288	665	388	1,017	1,152	600	64	161	136	65	482	221	149	562	482	221	149	562						
Rent Unspecified—Huur Ongespesifieerd	1	2	1	2	4	28	48	28	2	16	35	24	12	12	13	4	34	15	12	34	15	11	12	34						
Owned by Occupier—Eigendom van Bewoner	11	10	10	6	105	473	800	573	60	318	626	471	45	155	174	102	40	198	248	172	40	198	248	172	40					
Total Private Dwellings—Totaal Private Woningen	21	39	35	23	561	1,679	2,136	1,266	450	1,351	1,813	1,095	111	328	323	171	291	794	404	291	794	404	291	794						
Average Monthly Rental — Gemiddelde Maandelijke Huur	£ s. d.	£ s. d.	£ s. d.	£ s. d.	£ s. d.	£ s. d.	£ s. d.	£ s. d.	£ s. d.	£ s. d.	£ s. d.	£ s. d.	£ s. d.	£ s. d.	£ s. d.	£ s. d.	£ s. d.	£ s. d.	£ s. d.	£ s. d.	£ s. d.	£ s. d.	£ s. d.	£ s. d.						
Gemiddelde Maandelijke Huur — 3-6 Rooms	3	5	8		5	0	4																							
Average Monthly Rental — 3-6 Rooms	£ s. d.	£ s. d.	£ s. d.	£ s. d.	£ s. d.	£ s. d.	£ s. d.	£ s. d.	£ s. d.	£ s. d.	£ s. d.	£ s. d.	£ s. d.	£ s. d.	£ s. d.	£ s. d.	£ s. d.	£ s. d.	£ s. d.	£ s. d.	£ s. d.	£ s. d.	£ s. d.	£ s. d.						
Gemiddelde Maandelijke Huur — 3-6 Kamers	3	5	8		5	0	4																							

WONINGEN—STEDELIKE GEBIEDEN.—TABEL IX. (vervolg).

Monthly Rental. Maandelijke Huur.	Newcastle.						Ladysmith.						Johannesburg.						Germiston.						Krugersdorp.					
	Number of Rooms.						Number of Rooms.						Aantal Kamers.						Aantal Kamers.						Aantal Kamers.					
	3.	4.	5.	6.	7.	8.	3.	4.	5.	6.	7.	8.	3.	4.	5.	6.	7.	8.	3.	4.	5.	6.	7.	8.	3.	4.	5.	6.	7.	8.
Under-Beneden £1	2	1	3	1	1	1	1	1	1	1	1	1	1	1	1	1	1	1	1	1	1	1	1	1	1	1	1	1	1	1
£1 and under—en beneden	2	1	3	1	1	1	1	1	1	1	1	1	1	1	1	1	1	1	1	1	1	1	1	1	1	1	1	1	1	1
£2	5	15	2	2	2	2	3	15	2	2	2	2	3	15	2	2	2	2	3	15	2	2	2	2	3	15	2	2	2	2
£3	5	15	2	2	2	2	3	15	2	2	2	2	3	15	2	2	2	2	3	15	2	2	2	2	3	15	2	2	2	2
£4	5	15	2	2	2	2	3	15	2	2	2	2	3	15	2	2	2	2	3	15	2	2	2	2	3	15	2	2	2	2
£5	5	15	2	2	2	2	3	15	2	2	2	2	3	15	2	2	2	2	3	15	2	2	2	2	3	15	2	2	2	2
£6	5	15	2	2	2	2	3	15	2	2	2	2	3	15	2	2	2	2	3	15	2	2	2	2	3	15	2	2	2	2
£7	5	15	2	2	2	2	3	15	2	2	2	2	3	15	2	2	2	2	3	15	2	2	2	2	3	15	2	2	2	2
£8	5	15	2	2	2	2	3	15	2	2	2	2	3	15	2	2	2	2	3	15	2	2	2	2	3	15	2	2	2	2
£9	5	15	2	2	2	2	3	15	2	2	2	2	3	15	2	2	2	2	3	15	2	2	2	2	3	15	2	2	2	2
£10	5	15	2	2	2	2	3	15	2	2	2	2	3	15	2	2	2	2	3	15	2	2	2	2	3	15	2	2	2	2
£11	5	15	2	2	2	2	3	15	2	2	2	2	3	15	2	2	2	2	3	15	2	2	2	2	3	15	2	2	2	2
£12	5	15	2	2	2	2	3	15	2	2	2	2	3	15	2	2	2	2	3	15	2	2	2	2	3	15	2	2	2	2
£13	5	15	2	2	2	2	3	15	2	2	2	2	3	15	2	2	2	2	3	15	2	2	2	2	3	15	2	2	2	2
£14	5	15	2	2	2	2	3	15	2	2	2	2	3	15	2	2	2	2	3	15	2	2	2	2	3	15	2	2	2	2
£15 and over—en daar boven	5	15	2	2	2	2	3	15	2	2	2	2	3	15	2	2	2	2	3	15	2	2	2	2	3	15	2	2	2	2
Rent Specified—Huur Gespesifieerd	12	40	30	8	8	49	108	62	20	5,023	4,308	1,010	688	905	1,057	1,448	1,057	269	89	789	903	282	103							
Rent Unspecified—Huur Ongespesifieerd	4	5	3	3	6	4	1	4	6	116	188	107	31	31	38	15	24	58	47	569	594	140	43	43						
Owned by Occupier—Eigendom van Bewoner	3	28	38	21	11	41	34	20	2,013	2,368	1,390	712	121	121	141	68	27	196	251	119	44	44	44	44						
Total Private Dwellings—Totaal Private Woningen	19	73	71	32	60	150	100	46	7,152	7,059	3,107	1,448	1,057	1,057	1,087	269	89	789	903	282	103	103	103	103						
Average Monthly Rental — Gemiddelde Maandelijke Huur	£ s. d.	£ s. d.	£ s. d.	£ s. d.	£ s. d.	£ s. d.	£ s. d.	£ s. d.	£ s. d.	£ s. d.	£ s. d.	£ s. d.	£ s. d.	£ s. d.	£ s. d.	£ s. d.	£ s. d.	£ s. d.	£ s. d.	£ s. d.	£ s. d.	£ s. d.	£ s. d.	£ s. d.	£ s. d.					
Gemiddelde Maandelijke Huur — 3-6 Rooms	3	1	0		3	1	0																							
Average Monthly Rental — 3-6 Kamers	£ s. d.	£ s. d.	£ s. d.	£ s. d.	£ s. d.	£ s. d.	£ s. d.	£ s. d.	£ s. d.	£ s. d.	£ s. d.	£ s. d.	£ s. d.	£ s. d.	£ s. d.	£ s. d.	£ s. d.	£ s. d.	£ s. d.	£ s. d.	£ s. d.	£ s. d.	£ s. d.	£ s. d.	£ s. d.					
Gemiddelde Maandelijke Huur — 3-6 Kamers	3	1	0		3	1	0																							



DWELLINGS—URBAN AREAS.—TABLE IX. (continued).

WONINGEN—STEDELIKE GEBIEDEN.—TABEL IX. (vervolg).

Monthly Rental. Maandelikse Huur.	Pretoria and Suburbs. Pretoria en Voorsteden.						Pretoria Municipality. Pretoria Municipaliteit.						Innesdale Municipality. Innesdale Municipaliteit.						Pretoria Rural Suburbs. Pretoria Landelike Voorsteden.						Benoni.					
	Number of Rooms.						Number of Rooms.						Number of Rooms.						Number of Rooms.						Number of Rooms.					
	3.	4.	5.	6.	3.	4.	5.	6.	3.	4.	5.	6.	3.	4.	5.	6.	3.	4.	5.	6.	3.	4.	5.	6.						
Under-Beneden £1	19	12	4	1	4	1	1	4	4	1	1	14	11	4	1	1	1	1	1	1	1	1	1	1	1	1	1			
£1 and under—en beneden	42	42	3	5	3	2	2	11	11	7	7	35	15	1	1	1	1	1	1	1	1	1	1	1	1	1	1			
£2	118	57	5	5	11	1	1	41	41	9	9	41	29	4	4	41	41	4	4	41	41	4	4	41	41	4	4			
£3	205	136	25	5	162	2	2	162	110	24	24	162	24	3	3	162	24	3	3	162	24	3	3	162	24	3	3			
£4	160	182	28	12	144	159	40	159	159	40	7	16	14	7	7	16	14	7	7	16	14	7	7	16	14	7	7			
£5	158	171	47	9	150	155	40	150	155	40	7	150	155	40	7	150	155	40	7	150	155	40	7	150	155	40	7			
£6	90	185	68	7	86	178	65	86	178	65	7	86	178	65	7	86	178	65	7	86	178	65	7	86	178	65	7			
£7	15	192	97	23	17	35	54	17	35	54	22	17	35	54	22	17	35	54	22	17	35	54	22	17	35	54	22			
£8	15	192	97	23	17	35	54	17	35	54	22	17	35	54	22	17	35	54	22	17	35	54	22	17	35	54	22			
£9	7	35	60	28	29	57	29	29	57	29	21	29	57	29	21	29	57	29	21	29	57	29	21	29	57	29	21			
£10	3	29	58	28	12	12	12	12	12	12	9	12	12	12	9	12	12	12	9	12	12	12	9	12	12	12	9			
£11	3	29	58	28	12	12	12	12	12	12	9	12	12	12	9	12	12	12	9	12	12	12	9	12	12	12	9			
£12	3	29	58	28	12	12	12	12	12	12	9	12	12	12	9	12	12	12	9	12	12	12	9	12	12	12	9			
£13	3	29	58	28	12	12	12	12	12	12	9	12	12	12	9	12	12	12	9	12	12	12	9	12	12	12	9			
£14	3	29	58	28	12	12	12	12	12	12	9	12	12	12	9	12	12	12	9	12	12	12	9	12	12	12	9			
£15 and over—en daar boven	2	2	1	1	1	1	1	1	1	1	1	1	1	1	1	1	1	1	1	1	1	1	1	1	1	1	1			
Rent Specified—Huur Gespesifieerd	863	1,119	503	192	688	986	459	178	159	115	29	9	16	18	15	5	948	721	177	28	9	26	31	38	9	25	25			
Rent Unspecified—Huur Ongespesifieerd	123	66	22	9	119	65	22	9	119	65	22	9	119	65	22	9	119	65	22	9	119	65	22	9	119	65	22			
Owned by Occupier—Eigendom van Bewoner	714	811	407	185	398	551	307	162	296	240	89	10	20	20	11	4	293	216	66	25	4	293	216	66	25	4	25			
Total Private Dwellings—Totaal Private Woninge	1,700	1,996	932	386	1,205	1,602	788	349	455	355	118	28	40	39	20	9	1,265	968	251	62	9	1,265	968	251	62	9	62			
Average Monthly Rental — Gemiddelde Maandelikse Huur	£ s. d.	£ s. d.	£ s. d.	£ s. d.	£ s. d.	£ s. d.	£ s. d.	£ s. d.	£ s. d.	£ s. d.	£ s. d.	£ s. d.	£ s. d.	£ s. d.	£ s. d.	£ s. d.	£ s. d.	£ s. d.	£ s. d.	£ s. d.	£ s. d.	£ s. d.	£ s. d.	£ s. d.	£ s. d.	£ s. d.	£ s. d.	£ s. d.		
Average Monthly Rental 3-6 Rooms	5	16	7	6	3	9	6	3	9	3	2	3	6	4	11	5	9	4	5	9	4	5	9	4	5	9	4	5	9	4

DWELLINGS—URBAN AREAS.—TABLE IX. (continued).

WONINGEN—STEDELIKE GEBIEDEN.—TABEL IX. (vervolg).

Monthly Rental. Maandelikse Huur.	Bolsburg.						Pocheistroom.						Roodepoort.						Springs.						Middeburg.					
	Number of Rooms.						Number of Rooms.						Number of Rooms.						Number of Rooms.						Number of Rooms.					
	3.	4.	5.	6.	3.	4.	5.	6.	3.	4.	5.	6.	3.	4.	5.	6.	3.	4.	5.	6.	3.	4.	5.	6.						
Under-Beneden £1	1	1	1	1	1	1	1	1	1	1	1	1	1	1	1	1	1	1	1	1	1	1	1	1	1	1				
£1 and under—en beneden	4	4	2	2	4	4	4	4	2	2	4	4	2	2	4	4	2	2	4	4	2	2	4	4	2	2				
£2	10	10	2	2	17	17	17	17	2	2	17	17	2	2	17	17	2	2	17	17	2	2	17	17	2	2				
£3	35	35	4	4	39	39	39	39	4	4	39	39	4	4	39	39	4	4	39	39	4	4	39	39	4	4				
£4	187	154	24	4	163	163	163	163	4	4	163	163	4	4	163	163	4	4	163	163	4	4	163	163	4	4				
£5	145	92	16	1	129	129	129	129	1	1	129	129	1	1	129	129	1	1	129	129	1	1	129	129	1	1				
£6	46	62	14	5	52	52	52	52	5	5	52	52	5	5	52	52	5	5	52	52	5	5	52	52	5	5				
£7	14	21	7	8	3	3	3	3	8	8	3	3	8	8	3	3	8	8	3	3	8	8	3	3	8	8				
£8	1	1	1	1	1	1	1	1	1	1	1	1	1	1	1	1	1	1	1	1	1	1	1	1	1	1				
£9	1	1	1	1	1	1	1	1	1	1	1	1	1	1	1	1	1	1	1	1	1	1	1	1	1	1				
£10	1	1	1	1	1	1	1	1	1	1	1	1	1	1	1	1	1	1	1	1	1	1	1	1	1	1				
£11	1	1	1	1	1	1	1	1	1	1	1	1	1	1	1	1	1	1	1	1	1	1	1	1	1	1				
£12	1	1	1	1	1	1	1	1	1	1	1	1	1	1	1	1	1	1	1	1	1	1	1	1	1	1				
£13	1	1	1	1	1	1	1	1	1	1	1	1	1	1	1	1	1	1	1	1	1	1	1	1	1	1				
£14	1	1	1	1	1	1	1	1	1	1	1	1	1	1	1	1	1	1	1	1	1	1	1	1	1	1				
£15 and over—en daar boven	1	1	1	1	1	1	1	1	1	1	1	1	1	1	1	1	1	1	1	1	1	1	1	1	1	1				
Rent Specified—Huur Gespesifieerd	774	420	80	31	137	173	93	34	377	328	82	28	136	112	49	3	45	69	29	13	29	27	6	3	3	3	3			
Rent Unspecified—Huur Ongespesifieerd	29	46	30	13	73	37	25	14	23	24	24	7	14	12	22	4	9	8	3	3	3	3	3	3	3	3	3			
Owned by Occupier—Eigendom van Bewoner	133	160	66	31	126	159	94	41	123	142	57	18	26	29	11	3	21	40	42	17	3	21	40	42	17	3	17			
Total Private Dwellings—Totaal Private Woninge	956	626	176	75	336	369	212	89	523	494	102	53	176	153	82	10	75	117	74	33	10	75	117	74	33	10	33			
Average Monthly Rental — Gemiddelde Maandelikse Huur	£ s. d.	£ s. d.	£ s. d.	£ s. d.	£ s. d.	£ s. d.	£ s. d.	£ s. d.	£ s. d.	£ s. d.	£ s. d.	£ s. d.	£ s. d.	£ s. d.	£ s. d.	£ s. d.	£ s. d.	£ s. d.	£ s. d.	£ s. d.	£ s. d.	£ s. d.	£ s. d.	£ s. d.	£ s. d.	£ s. d.	£ s. d.	£ s. d.		
Average Monthly Rental 3-6 Rooms	4	12	4	3	13	0	3	13	0	4	9	9	5	5	0	5	5	0	5	5	0	5	5	0	5	5	0	5	5	0



DWELLINGS—URBAN AREAS.—TABLE IX. (continued). Woningen—Stedelijke Gebieden.—TABEL IX. (vervolg).

Monthly Rental. Maandelijke Huur.	Ermelo.						Petersburg.						Klerksdorp.						Standerton.						Rustenburg.							
	Number of Rooms.						Number of Rooms.						Number of Rooms.						Number of Rooms.						Number of Rooms.							
	3.	4.	5.	6.	3.	4.	5.	6.	3.	4.	5.	6.	3.	4.	5.	6.	3.	4.	5.	6.	3.	4.	5.	6.	3.	4.	5.	6.	3.	4.	5.	6.
Under-Beneden £1	5	2	—	—	—	—	—	—	—	—	—	—	—	—	—	—	—	—	—	—	—	—	—	—	—	—	—	—	—	—	—	
£1 and under—en beneden	12	3	—	—	—	—	—	—	—	—	—	—	—	—	—	—	—	—	—	—	—	—	—	—	—	—	—	—	—	—	—	
£2	12	3	—	—	—	—	—	—	—	—	—	—	—	—	—	—	—	—	—	—	—	—	—	—	—	—	—	—	—	—	—	
£3	12	3	—	—	—	—	—	—	—	—	—	—	—	—	—	—	—	—	—	—	—	—	—	—	—	—	—	—	—	—	—	
£4	9	9	—	—	—	—	—	—	—	—	—	—	—	—	—	—	—	—	—	—	—	—	—	—	—	—	—	—	—	—	—	
£5	7	11	5	—	—	—	—	—	—	—	—	—	—	—	—	—	—	—	—	—	—	—	—	—	—	—	—	—	—	—	—	
£6	7	11	7	—	—	—	—	—	—	—	—	—	—	—	—	—	—	—	—	—	—	—	—	—	—	—	—	—	—	—	—	
£7	3	—	—	—	—	—	—	—	—	—	—	—	—	—	—	—	—	—	—	—	—	—	—	—	—	—	—	—	—	—	—	
£8	—	—	—	—	—	—	—	—	—	—	—	—	—	—	—	—	—	—	—	—	—	—	—	—	—	—	—	—	—	—	—	—
£9	—	—	—	—	—	—	—	—	—	—	—	—	—	—	—	—	—	—	—	—	—	—	—	—	—	—	—	—	—	—	—	—
£10	—	—	—	—	—	—	—	—	—	—	—	—	—	—	—	—	—	—	—	—	—	—	—	—	—	—	—	—	—	—	—	—
£11	—	—	—	—	—	—	—	—	—	—	—	—	—	—	—	—	—	—	—	—	—	—	—	—	—	—	—	—	—	—	—	—
£12	—	—	—	—	—	—	—	—	—	—	—	—	—	—	—	—	—	—	—	—	—	—	—	—	—	—	—	—	—	—	—	—
£13	—	—	—	—	—	—	—	—	—	—	—	—	—	—	—	—	—	—	—	—	—	—	—	—	—	—	—	—	—	—	—	—
£14	—	—	—	—	—	—	—	—	—	—	—	—	—	—	—	—	—	—	—	—	—	—	—	—	—	—	—	—	—	—	—	—
£15 and over—en daar boven	—	—	—	—	—	—	—	—	—	—	—	—	—	—	—	—	—	—	—	—	—	—	—	—	—	—	—	—	—	—	—	—
Rent Specified—Huur Gespecificeerd	41	37	23	—	—	—	—	—	—	—	—	—	—	—	—	—	—	—	—	—	—	—	—	—	—	—	—	—	—	—	—	
Rent Unspecified—Huur Ongespecificeerd	7	6	5	—	—	—	—	—	—	—	—	—	—	—	—	—	—	—	—	—	—	—	—	—	—	—	—	—	—	—	—	
Owned by Occupier—Eigendom van Bewoner	21	30	21	—	—	—	—	—	—	—	—	—	—	—	—	—	—	—	—	—	—	—	—	—	—	—	—	—	—	—	—	
Total Private Dwellings—Totaal Private Woningen	69	73	49	21	—	—	—	—	—	—	—	—	—	—	—	—	—	—	—	—	—	—	—	—	—	—	—	—	—	—	—	
Average Monthly Rental—Gemiddelde Maandelijke Huur	£ s. d.	£ s. d.	£ s. d.	£ s. d.	£ s. d.	£ s. d.	£ s. d.	£ s. d.	£ s. d.	£ s. d.	£ s. d.	£ s. d.	£ s. d.	£ s. d.	£ s. d.	£ s. d.	£ s. d.	£ s. d.	£ s. d.	£ s. d.	£ s. d.	£ s. d.	£ s. d.	£ s. d.	£ s. d.	£ s. d.	£ s. d.	£ s. d.	£ s. d.	£ s. d.	£ s. d.	
Average Monthly Rental Rooms 3-6	£ s. d.	£ s. d.	£ s. d.	£ s. d.	£ s. d.	£ s. d.	£ s. d.	£ s. d.	£ s. d.	£ s. d.	£ s. d.	£ s. d.	£ s. d.	£ s. d.	£ s. d.	£ s. d.	£ s. d.	£ s. d.	£ s. d.	£ s. d.	£ s. d.	£ s. d.	£ s. d.	£ s. d.	£ s. d.	£ s. d.	£ s. d.	£ s. d.	£ s. d.	£ s. d.	£ s. d.	
Gemiddelde Maandelijke Huur Kamers	£ s. d.	£ s. d.	£ s. d.	£ s. d.	£ s. d.	£ s. d.	£ s. d.	£ s. d.	£ s. d.	£ s. d.	£ s. d.	£ s. d.	£ s. d.	£ s. d.	£ s. d.	£ s. d.	£ s. d.	£ s. d.	£ s. d.	£ s. d.	£ s. d.	£ s. d.	£ s. d.	£ s. d.	£ s. d.	£ s. d.	£ s. d.	£ s. d.	£ s. d.	£ s. d.	£ s. d.	

DWELLINGS—URBAN AREAS.—TABLE IX. (continued). Woningen—Stedelijke Gebieden.—TABEL IX. (vervolg).

Monthly Rental. Maandelijke Huur.	Bloemfontein and Suburbs. Bloemfontein en Voorsteden.						Bloemfontein Municipality. Bloemfontein Municipaliteit.						Bloemfontein Rural Suburbs. Bloemfontein Landelike Voorsteden.						Kroonstad.						Jagersfontein.							
	Number of Rooms.						Number of Rooms.						Number of Rooms.						Number of Rooms.						Number of Rooms.							
	3.	4.	5.	6.	3.	4.	5.	6.	3.	4.	5.	6.	3.	4.	5.	6.	3.	4.	5.	6.	3.	4.	5.	6.	3.	4.	5.	6.	3.	4.	5.	6.
Under-Beneden £1	1	2	—	—	—	—	—	—	—	—	—	—	—	—	—	—	—	—	—	—	—	—	—	—	—	—	—	—	—	—	—	—
£1 and under—en beneden	14	5	—	—	—	—	—	—	—	—	—	—	—	—	—	—	—	—	—	—	—	—	—	—	—	—	—	—	—	—	—	—
£2	14	5	—	—	—	—	—	—	—	—	—	—	—	—	—	—	—	—	—	—	—	—	—	—	—	—	—	—	—	—	—	—
£3	82	121	—	—	—	—	—	—	—	—	—	—	—	—	—	—	—	—	—	—	—	—	—	—	—	—	—	—	—	—	—	—
£4	71	78	—	—	—	—	—	—	—	—	—	—	—	—	—	—	—	—	—	—	—	—	—	—	—	—	—	—	—	—	—	—
£5	58	82	—	—	—	—	—	—	—	—	—	—	—	—	—	—	—	—	—	—	—	—	—	—	—	—	—	—	—	—	—	—
£6	37	74	—	—	—	—	—	—	—	—	—	—	—	—	—	—	—	—	—	—	—	—	—	—	—	—	—	—	—	—	—	—
£7	12	39	—	—	—	—	—	—	—	—	—	—	—	—	—	—	—	—	—	—	—	—	—	—	—	—	—	—	—	—	—	—
£8	—	—	—	—	—	—	—	—	—	—	—	—	—	—	—	—	—	—	—	—	—	—	—	—	—	—	—	—	—	—	—	—
£9	—	—	—	—	—	—	—	—	—	—	—	—	—	—	—	—	—	—	—	—	—	—	—	—	—	—	—	—	—	—	—	—
£10	—	—	—	—	—	—	—	—	—	—	—	—	—	—	—	—	—	—	—	—	—	—	—	—	—	—	—	—	—	—	—	—
£11	—	—	—	—	—	—	—	—	—	—	—	—	—	—	—	—	—	—	—	—	—	—	—	—	—	—	—	—	—	—	—	—
£12	—	—	—	—	—	—	—	—	—	—	—	—	—	—	—	—	—	—	—	—	—	—	—	—	—	—	—	—	—	—	—	—
£13	—	—	—	—	—	—	—	—	—	—	—	—	—	—	—	—	—	—	—	—	—	—	—	—	—	—	—	—	—	—	—	—
£14	—	—	—	—	—	—	—	—	—	—	—	—	—	—	—	—	—	—	—	—	—	—	—	—	—	—	—	—	—	—	—	—
£15 and over—en daar boven	—	—	—	—	—	—	—	—	—	—	—	—	—	—	—	—	—	—	—	—	—	—	—	—	—	—	—	—	—	—	—	—
Rent Specified—Huur Gespecificeerd	314	509	178	86	308	507	177	87	83	101	50	15	33	91	76	42	11	—	—	—	—	—	—	—	—	—	—	—	—	—	—	
Rent Unspecified—Huur Ongespecificeerd	21	11	12	—	—	—	—	—	—	—	—	—	—	—	—	—	—	—	—	—	—	—	—	—	—	—	—	—	—	—	—	—
Owned by Occupier—Eigendom van Bewoner	128	162	94	84	82	137	89	82	44	25	5	2	12	28	22	17	21	33	14	11	—	—	—	—	—	—	—	—	—	—	—	
Total Private Dwellings—Totaal Private Woningen	461	682	284	178	407	633	277	172	54	29	7	6	111	183	73	35	118	115	61	22	—	—	—	—	—	—	—	—	—	—	—	
Average Monthly Rental—Gemiddelde Maandelijke Huur	£ s. d.	£ s. d.	£ s. d.	£ s. d.	£ s. d.	£ s. d.	£ s. d.	£ s. d.	£ s. d.	£ s. d.	£ s. d.	£ s. d.	£ s. d.	£ s. d.	£ s. d.	£ s. d.	£ s. d.	£ s. d.	£ s. d.	£ s. d.	£ s. d.	£ s. d.	£ s. d.	£ s. d.	£ s. d.	£ s. d.	£ s. d.	£ s. d.	£ s. d.	£ s. d.	£ s. d.	
Average Monthly Rental Rooms 3-6	£ s. d.	£ s. d.	£ s. d.	£ s. d.	£ s. d.	£ s. d.	£ s. d.	£ s. d.	£ s. d.	£ s. d.	£ s. d.	£ s. d.	£ s. d.	£ s. d.	£ s. d.	£ s. d.	£ s. d.	£ s. d.	£ s. d.	£ s. d.	£ s. d.	£ s. d.	£ s. d.	£ s. d.	£ s. d.	£ s. d.	£ s. d.	£ s. d.	£ s. d.	£ s. d.	£ s. d.	
Gemiddelde Maandelijke Huur Kamers	£ s. d.	£ s. d.	£ s. d.	£ s. d.	£ s. d.	£ s. d.	£ s. d.	£ s. d.	£ s. d.	£ s. d.	£ s. d.	£ s. d.	£ s. d.	£ s. d.	£ s. d.	£ s. d.	£ s. d.	£ s. d.	£ s. d.	£ s. d.	£ s. d.	£ s. d.	£ s. d.	£ s. d.	£ s. d.	£ s. d.	£ s. d.	£ s. d.	£ s. d.	£ s. d.	£ s. d.	



WONINGEN—STEDELIKE GEBIEDEN.—TABEL IX. (vervolg).

Monthly Rentals. Maandelijke Huur.	Parys.						Bethlehem.						Eloksburg.						Harrismitb.														
	Number of Rooms.						Number of Rooms.						Number of Rooms.						Number of Rooms.														
	3.	4.	5.	6.	7.	8.	3.	4.	5.	6.	7.	8.	3.	4.	5.	6.	7.	8.	3.	4.	5.	6.	7.	8.	3.	4.	5.	6.					
Under—Beneden £1	7	2	2	1	1	1	1	1	1	1	1	1	1	1	1	1	1	1	1	1	1	1	1	1	1	1	1	1	1				
£1 and under—en beneden	17	14	7	2	2	2	14	3	3	3	3	9	4	2	2	2	7	7	4	6	6	6	6	6	6	6	6	6	6				
£2	12	11	7	2	2	2	27	8	8	8	8	11	4	4	4	4	4	4	4	4	4	4	4	4	4	4	4	4	4				
£3	3	3	3	2	2	2	13	3	3	3	3	4	1	1	1	1	1	1	1	1	1	1	1	1	1	1	1	1	1	1			
£4	3	3	3	2	2	2	8	3	3	3	3	1	1	1	1	1	1	1	1	1	1	1	1	1	1	1	1	1	1	1			
£5	2	2	2	2	2	2	—	—	—	—	—	—	—	—	—	—	—	—	—	—	—	—	—	—	—	—	—	—	—	—	—		
£6	—	—	—	—	—	—	—	—	—	—	—	—	—	—	—	—	—	—	—	—	—	—	—	—	—	—	—	—	—	—	—		
£7	—	—	—	—	—	—	—	—	—	—	—	—	—	—	—	—	—	—	—	—	—	—	—	—	—	—	—	—	—	—	—		
£8	—	—	—	—	—	—	—	—	—	—	—	—	—	—	—	—	—	—	—	—	—	—	—	—	—	—	—	—	—	—	—		
£9	—	—	—	—	—	—	—	—	—	—	—	—	—	—	—	—	—	—	—	—	—	—	—	—	—	—	—	—	—	—	—		
£10	—	—	—	—	—	—	—	—	—	—	—	—	—	—	—	—	—	—	—	—	—	—	—	—	—	—	—	—	—	—	—		
£11	—	—	—	—	—	—	—	—	—	—	—	—	—	—	—	—	—	—	—	—	—	—	—	—	—	—	—	—	—	—	—		
£12	—	—	—	—	—	—	—	—	—	—	—	—	—	—	—	—	—	—	—	—	—	—	—	—	—	—	—	—	—	—	—		
£13	—	—	—	—	—	—	—	—	—	—	—	—	—	—	—	—	—	—	—	—	—	—	—	—	—	—	—	—	—	—	—	—	
£14	—	—	—	—	—	—	—	—	—	—	—	—	—	—	—	—	—	—	—	—	—	—	—	—	—	—	—	—	—	—	—	—	
£15 and over—en daar boven	—	—	—	—	—	—	—	—	—	—	—	—	—	—	—	—	—	—	—	—	—	—	—	—	—	—	—	—	—	—	—	—	
Rent Specified—Huur Gespecificeerd	44	55	18	5	5	5	80	36	9	9	9	21	34	18	18	8	8	82	98	48	19	19	19	82	98	48	19	19	19	82	98	48	19
Rent Unspecified—Huur Ongespecificeerd	5	3	2	3	3	3	4	1	2	2	2	9	4	2	2	7	7	2	2	7	3	7	7	2	2	7	3	7	3	7	2	2	
Owned by Occupier—Eigendom van Bewoner	45	56	36	19	16	16	84	39	17	17	17	46	31	39	21	21	11	11	100	63	28	28	46	69	59	36	36	36	100	63	28	28	
Total Private Dwellings—Totaal Private Woningen	94	114	56	27	27	27	100	98	28	28	28	76	69	59	36	36	45	45	135	99	99	99	135	99	99	99	99	99	135	99	99	99	
Average Monthly Rental—Gemiddelde Maandelijke Huur	£ 1 18 0	£ s. d. 2 15 6	£ s. d. 3 1 3	£ s. d. 5 2 8	£ s. d. 5 2 8	£ s. d. 5 2 8	£ s. d. 5 15 11	£ s. d. 4 2 7	£ s. d. 4 12 7	£ s. d. 5 15 11	£ s. d. 5 15 11	£ s. d. 1 9 11	£ s. d. 2 15 1	£ s. d. 2 19 9	£ s. d. 4 0 10	£ s. d. 5 13 5	£ s. d. 5 16 9	£ s. d. 5 16 9	£ s. d. 5 17 6	£ s. d. 5 17 6	£ s. d. 5 17 6	£ s. d. 5 17 6	£ s. d. 5 17 6	£ s. d. 5 17 6	£ s. d. 5 17 6	£ s. d. 5 17 6	£ s. d. 5 17 6	£ s. d. 5 17 6	£ s. d. 5 17 6	£ s. d. 5 17 6	£ s. d. 5 17 6	£ s. d. 5 17 6	£ s. d. 5 17 6
Average Monthly Rental	£ s. d. 2 10 7						£ s. d. 3 17 10						£ s. d. 2 14 1						£ s. d. 5 17 6														
Gemiddelde Maandelijke Huur	3-8 Rooms						3-8 Rooms						3-8 Rooms						3-8 Rooms														
	Kamers						Kamers						Kamers						Kamers														

DWELLINGS—URBAN AREAS.

TABEL X.—Classification of private dwellings, occupied by Europeans, according to materials of which outer walls (excluding foundation) are built, in the principal Urban Areas of the Union, grouped in seven Geographical Divisions—Census 1918.

Division.	Materials.													Total.	Adelling.				
	Brick.	Stone.	Brick and Stone.	Concrete.	Wood.	Iron.	Wood and Iron.	Wood and Iron (Incl. lined).	Sun Dried Brick.	Lath and Plaster.	Wattle and Daub or Plaster.	Reeds, Rushes, Matie.	Sods, Daga, Clay.			Canvass, Linen, Hessian, etc.	Asbestos.	Composition of any sort.	Other Materials.
<b>I. COASTAL.</b>																			
Cape Town and Suburbs	11,003	273	3,009	89	56	16	444	66	76	1	1						4	15,048	Kaapstad en Voorsteden.
Wynberg Municipality	1,127	23	2,447	2	34	6	76	49	49	—	—	—	—	—	—	—	4	13,298	Kaapstad Municipality.
Parow V.M.B.	142	18	18	2	4	6	68	10	23	—	—	—	—	—	—	—	1	1,595	Wynberg Municipality.
Port Elizabeth and Suburbs	2,863	36	312	49	27	7	608	99	2	2	—	—	—	—	—	—	1	3,939	Port Elizabeth en Voorsteden.
Walmere Municipality	2,477	36	302	41	27	1	588	77	2	—	—	—	—	—	—	—	1	3,833	Port Elizabeth Municipality.
East London and Suburbs	1,436	25	137	17	6	22	1,203	113	4	1	—	—	—	—	—	—	9	2,873	East London en Voorsteden.
Cambridge Municipality	1,100	22	111	16	5	15	1,003	89	3	—	—	—	—	—	—	—	9	2,344	East London Municipality.
Durban and Suburbs	5,024	16	138	44	24	29	1,673	108	7	2	4	—	—	—	—	—	4	7,101	Durban en Voorsteden.
Durban Rural Suburbs	4,556	16	123	17	12	14	1,082	86	7	1	3	—	—	—	—	—	3	5,935	Durban Municipality.
Mossel Bay	52	261	45	25	—	2	104	13	1	—	—	—	—	—	—	—	1	1,166	Durban Landelike Voorsteden.
Uitenhage	1,050	45	100	2	2	1	9	—	—	—	—	—	—	—	—	—	1	1,231	Mossel Bay.
Simonstown	113	45	100	2	2	1	9	—	—	—	—	—	—	—	—	—	1	275	Uitenhage.
	21,541	656	3,804	236	115	80	4,051	337	95	4	7	—	—	—	—	—	23	30,973	Simonstown.
<b>II. SOUTH—NON-COASTAL.</b>																			
Paarl	772	5	126	177	—	—	2	2	9	—	—	—	—	—	—	—	—	916	Paarl.
Oudtshoorn	335	308	177	—	—	—	16	4	88	—	—	—	—	—	—	—	—	916	Oudtshoorn.
Grahamstown	513	96	340	—	—	—	10	10	1	—	—	—	—	—	—	—	—	970	Grahamstown.
Cradoek	599	27	145	—	—	—	18	3	5	—	—	—	—	—	—	—	—	457	Cradoek.
Kingwilliamstown	315	18	92	—	—	—	18	2	4	—	—	—	—	—	—	—	—	489	Kingwilliamstown.
Worcester	763	16	144	4	—	—	13	9	1	—	—	—	—	—	—	—	—	952	Worcester.
Stellenbosch	442	2	97	5	—	—	2	2	8	—	—	—	—	—	—	—	—	559	Stellenbosch.
Robertson	317	1	71	—	—	—	1	1	4	—	—	—	—	—	—	—	—	398	Robertson.
George	371	2	33	—	—	—	3	2	4	—	—	—	—	—	—	—	—	427	George.
Simonstown	242	23	32	—	—	—	6	1	4	—	—	—	—	—	—	—	—	427	Simonstown.
Somerset East	347	2	17	—	—	—	5	1	2	—	—	—	—	—	—	—	—	356	Somerset East.
	4,998	502	1,345	13	4	16	77	34	137	2	11	—	—	—	—	—	2	7,720	



DWELLINGS—URBAN AREAS.—TABLE X. (continued).

WONINGEN—STEDELIKE GEBIEDEN.—TABEL X. (vervolg)

Division.	Materialen.												Afdeling.							
	Baksteen.	Klip.	Klip en Steen.	Beton, Konkreet.	Hout.	Ijzer.	Hout en Ijzer.	Hout en Ijzer (Baksteen wandbekleding).	Zongetroogte Steen.	Bepsierde Laten.	Wattel en Bestryksel of Dagma Klei.	Rieten Mielie Stronken.		Soden, Dagma, Klei.	Zeldoek, Linne, enz.	Asbest.	Komposities van enigelei soort, enz.	Andere Materialen.	Ongespeiceerd.	Totaal.
<b>III. CENTRAL.</b>																				
<b>Bloemfontein and Suburbs</b>	1,537	26	271	19	9	116	97	40												2,118
Bloemfontein Municipality	1,493	17	231	18	9	92	76	8												1,947
Bloemfontein Rural Suburbs	44	9	40	1	1	24	21	32												171
<b>Kimberley</b>	1,507	22	130	4	68	154	512	571												2,987
Kimberley West	1,395	12	121	2	4	74	17	10												1,535
Kroonstad	159	55	95	4	4	80	16	8												419
Jagersfontein	356	1	12	1	1	16	1	1												385
Alwal North	245	1	12	1	1	16	1	1												382
Bethlehem	116	136	59	1	6	28	25	1												720
Graaff-Reinet	120	84	56			10	4	36												321
Ficksburg	150	84	56			10	4	36												309
<b>IV. OOSTELIKE.</b>																				3,201
<b>Pietermaritzburg</b>	4,666	387	1,254	11	31	89	416	657	3											5,210
Pietermaritzburg Municipality	2,286	26	188	2	1	54	18	98												2,640
Pietermaritzburg Rural Suburbs	379	32	32			4	4	29												426
Ladysmith	1,01	3	16	1	4	20	10	3												1,336
Newcastle	175	74	16		6	43	64	5												244
Standerton	137	1	6		6	43	64	5												279
Koekstad	3,083	196	273	3	1	16	288	146	144											3,801
<b>V. WITWATERSRAND.</b>																				4,165
<b>Johannesburg</b>	15,624	135	2,256	34	15	181	1,003	3,716	106	7										17,172
Johannesburg Municipality	4,250	36	554	2	2	34	890	360	31	1										6,199
Johannesburg Rural Suburbs	590	12	72	14	1	12	48	159	16											1,336
Pretoria	68	1	13	1	1	22	21	2												128
Pretoria Rural Suburbs	2,416	31	253	7	1	14	103	382	15											3,226
Boksburg	1,445	6	104	1	1	14	86	513	7											2,176
Germiston	1,477	39	179	3	1	31	205	1,009	18											2,706
Krugersdorp	1,408	40	125	3	1	26	209	352	24											2,405
Rooiemoed—Maraisburg.	313	1	5			21	132	103	1											1,455
Springs	394	2	55			1	132	103	1											539
<b>VI. NOORDER.</b>																				42,225
<b>Pretoria</b>	27,799	300	3,586	85	20	321	2,711	7,041	283	9										31,172
Pretoria Municipality	111	7	21	2	5	37	14	6												210
Pretoria Rural Suburbs	280	19	19		9	14	64	11												348
Middelburg	691	12	70	2	2	66	200	137	1											1,318
Vereeniging	92	21	46	2	1	4	44	14												185
Marikana	187	14	14	2	18	19	34	13												257
Ermedo	137	48	48	2	1	13	10	5												237
Klerksdorp	222	11	51		3	14	39	10												357
Parys	307	9	9		3	1	39	10												392
<b>VII. NOORDWESTELIKE.</b>																				183
<b>Calvinia</b>	2,239	120	307	2	9	115	347	339	225	2										3,749
Calvinia Municipality	107		16	2		3	3	2												133
Prieska	129	3	16		4	36	2	2												183
Uppington	154	1	27		1	12	1	1												208
	390	4	59	2	5	51	5	6												534

DWELLINGS—URBAN AREAS.

WONINGEN—STEDELIKE GEBIEDEN.

TABEL XI.—Number of dwellings of various descriptions occupied by Europeans in the principal Urban Areas of the Union, grouped in seven Geographical Divisions—Census 1918.

TABEL XI.—Aantal woningen van verschillende soorten bewoond door Blanken in de voornaamste Stedelijke Gebieden van de Unie, gegroepeerd in zeven Aardrijkskundige Afdelingen—Census 1918.

Division.	Description of Dwellings.														Afdeling.					
	Private Dwellings.	Residential Chambers.	Caretakers' Quarters.	Dwellings and Business Premises combined.	Boarding and Lodging Houses.	Hotels.	Residential Clubs.	General, Mental and Leprosy Hospitals, Lazarettos, etc.	Charitable Institutions (other than Hospitals).	Prisons, Gaols, Reformatories, etc.	Police Barracks, Stations and Quarters.	Naval and Military Establishments.	Wagons and Tents.	Other Buildings.		Unspecified.				
<b>I. COASTAL.</b>																				
<b>Cape Town and Suburbs</b>	15,049	762	89	669	322	148	10	32	22	36	8	18	10	8	34	16	17,233			
Cape Town Municipality	13,298	746	83	601	313	140	9	23	22	33	8	16	9	7	23	14	15,843			
Wynberg Municipality	1,256	15	6	64	109	7	0	9		3	—	—	—	—	1	1	1,680			
Paow V.S.B.P.	246	1	1	8	1	1	1	1		—	—	—	—	—	—	—	260			
<b>Port Elizabeth and Suburbs</b>	3,936	63	11	143	62	38	3	6	18	7	1	4	1	1	8	14	4,315			
Port Elizabeth Municipality	3,684	63	10	141	62	37	3	6	18	7	1	2	1	1	8	14	4,057			
Walmer Municipality	252			2													258			
<b>East London and Suburbs</b>	2,973	51	8	59	55	16	1	3	1	6	11	3	2	2	8	20	3,222			
East London Municipality	2,374	51	8	46	55	12	1	3	1	5	11	1	1	1	7	20	2,602			
Cambridge Municipality	599			13		4				1					1		620			
<b>Durban and Suburbs</b>	7,101	213	26	212	149	48	5	17	10	14	6	24	7	5	23	24	7,884			
Durban Municipality	5,935	210	24	208	145	42	5	16	7	12	6	16	6	5	11	22	6,670			
Durban Rural Suburbs	1,166	3	2	4	4	6		1	3	2	0	8	1	0	12	2	1,214			
Mossel Bay	108	8	2	19	0	5		1	1	1	1	—	—	—	—	1	457			
Simons-town	1,271	22	1	20	5	15		2	1	5	—	—	—	—	—	1	1,371			
	30,973	1,125	140	1,138	610	271	19	61	53	69	28	54	51	21	75	76	34,764			
<b>II. SOUTH—NON-COASTAL.</b>																				
<b>Paarl</b>	916	14	3	92	9	10		1	1	7	—	—	—	—	—	—	1,055			
Quuthoorn	970	5	8	24	11	9		6	2	20	—	—	—	—	—	—	1,072			
Queenstown	797	5	4	7	6	7		3	1	6	1	1	1	1	2	—	838			
Craddock	456	1	1	10	6	4		1	1	5	1	1	1	1	1	—	488			
Umtata	189	1	1	3	3	4		1	1	4	1	1	1	1	1	—	214			
Kingwilliamstown	556	15	2	40	10	8		1	2	8	2	4	1	1	1	—	1,633			
Stellenbosch	398	5	5	26	31	4		1	1	3	1	1	1	1	1	—	478			
Robertson	417	30	1	31	4	3		1	1	2	1	1	1	1	1	—	491			
Wellington	427	6	1	14	4	4		1	1	9	1	1	1	1	1	—	463			
George	356	5	—	1	3	2		1	1	5	1	1	1	1	1	—	390			
Somerset East	379	—	—	—	—	—		—	—	1	—	—	—	—	—	—	389			
	7,726	90	32	336	112	62	—	15	6	90	12	19	1	2	13	7	8,532			



Division.	Soorten van Woningen.													Afdeling.			
	Private Woningen.	Geboeven Verhuurd bij kamers of vertel-ingen, enz.	Kongleriekamers.	Woonhuys en bezitkings-richting Verenigd.	Logies en Kosthuizen.	Hotels.	Klubs met Logement.	Algemeen, Krankzinnigen en Melanische Hospitelen, Lazarets, enz.	Weledigheidsinrichtin- gen (geen Hospitelen).	Opvoedkundige inrich- tingen.	Strafinrichtingen.	Poffiekantoren, Posten en Kasernes.	Martine en Militaire In- richtingen.		Wagens en Tenten.	Andere Gebouwen.	Ongepecheerd.
<b>III. CENTRAL.</b>																	
<b>Bloemfontein and Suburbs</b>	2,118	31	24	37	49	12	3	22	1	20	10	5	44	1	19		2,396
Bloemfontein Municipality	1,947	30	24	37	49	12	3	22	1	20	10	5	44	1	15		2,219
Bloemfontein Rural Suburbs	171	1													4		177
Kimberley	2,987	44	12	111	28	34		4	3	5	5	6	3	2	3	1	3,248
Beaufort West	2,535	4		16	3					1	1	1		1	1		2,570
Kroonstad	419	2	2	11	3	2	1			3	1	1		1	1		440
Worcester	385	10	10	4	3	2				1	1	1		1	1		406
Alwal North	366	3	3	8	5	6				1	1	1		1	1		390
Bethlehem	362	3	3	24	6	3				4	1	1		1	1		390
Graaff-Reinet	362	21	1	10	6	3				2	2	1		1	1		390
Ficksburg	369				6	3				1	2	1					334
<b>IV. EASTERN.</b>																	8,985
Pietermaritzburg	2,640	20	14	41	22	14	4	6	6	41	25	15	47	6	38	3	2,795
Harrismith	459	4		5	1	1				5	1	2	3	1	1		459
Ladysmith	244	1	1	2	2	2				1	1	1		1	1		250
Newcastle	279	2	3	4	2	3				3	2	1		1	1		300
Standerfontein	152				3	3				2	1	2					169
Kokstad					2	3				2	1	2					109
<b>V. WITWATERSRAND.</b>																	4,413
Johannesburg	4,195	27	26	58	38	25	5	10	6	13	7	14	3	3	8	5	4,413
<b>VI. NORTHERN.</b>																	46,711
Pretoria and Suburbs	28,172	812	96	998	215	90	6	34	10	28	13	36	1	2	47	97	25,667
Pretoria Municipality	6,199	157	33	210	88	15	3	6	3	3		5	29	4	6	6	6,767
Innesdale Municipality	4,755	148	33	188	88	15	3	6	3			3	29	3	1	5	5,135
Pretoria Rural Suburbs	1,316	9		20													1,330
Benoni	3,226	77	9	146	30	11	3	5	1	1	10	4		2	9	6	3,529
Boksburg	2,176	169	21	105	10	12	1	5	1	7	7	7		1	10	4	2,350
Germiston	3,053	69	10	143	38	15	3	3	1	2	10	3		3	23	4	3,250
Krugersdorp	2,405	62	10	124	15	14	1	2	2	1	2	5		1	5	4	2,669
Rosebank	1,842	23	1	27	4	2				1	2	5		2	3	5	1,930
Rooseboom	1,539	23	1	27	4	2				1	2	5		2	3	5	1,630
Springs																	602
<b>VII. NORTH-WESTERN.</b>																	4,091
Pietersburg	210	2	3	2	3	4	1	1	1	1	1	4		1	4	2	240
Rustenburg	348	5	2	19	7	2	1	1	1	1	1	2		24	4	383	
Middelburg	388	2	4	7	4	4	2	1	1	7	1	1		2	2	431	
Witwatersdorp	1,318	2	4	17	4	4	1	1	1	1	2	2		1	2	1,357	
Vryburg	185	2	1	18	2	4	1	1	1	3	1	1		15	2	210	
Matieling	267	2	1	18	2	4	1	1	1	3	1	1		2	2	270	
Ermelo	284	6	3	21	9	3	2	2	2	1	1	1		1	1	330	
Witwatersdorp	327	9	6	33	6	3	3	1	1	1	1	1		1	1	410	
Klerksdorp	392	11	9	6	6	3	3	1	1	1	1	1		1	1	417	
Parys																	417
<b>VIII. NOORD-VESTELIKE.</b>																	608
Calvinia	3,740	59	23	87	37	25	2	6	1	15	6	17	3	26	27	8	4,091
Prieska	133	3	2	4	4	2				3	1	1		2	3	1	157
Upington	189	4	1	15	1	1				1	4	1		1	1	1	212
Uitendouwe	208																219
Uitendouwe	584	7	4	32	5	3		1		4	5	2		2	7	2	608

DWELLINGS.

WONINGEN.

TABLE XII.—Numbers and percentages of private dwellings under headings "Owned by occupier" and "Not owned by occupier" in Urban and Rural Areas—Union and Provinces—Census 1918.

Province.	Urban—Stedelike.				Rural—Landelike.				Total—Totaal.			
	Owned by Occupier.		Not owned by Occupier.		Owned by Occupier.		Not owned by Occupier.		Owned by Occupier.		Not owned by Occupier.	
	Number.	Per cent.	Number.	Per cent.	Number.	Per cent.	Number.	Per cent.	Number.	Per cent.		
Cape of Good Hope	16,935	35.57	33,507	66.43	26,117	50.94	25,150	49.06	43,052	42.33	58,657	57.67
Natal	3,632	34.94	6,944	65.06	5,379	54.73	4,449	45.27	9,011	44.16	11,393	55.84
Transvaal	16,754	33.33	33,515	66.67	20,580	56.40	15,906	43.60	37,334	43.03	49,421	56.97
Orange Free State	3,660	42.15	5,023	57.85	13,322	55.08	10,865	44.92	16,982	51.66	15,888	48.34
<b>Total—Union of South Africa</b>	<b>40,981</b>	<b>34.16</b>	<b>78,889</b>	<b>65.84</b>	<b>65,398</b>	<b>53.71</b>	<b>56,370</b>	<b>46.29</b>	<b>106,379</b>	<b>44.01</b>	<b>135,359</b>	<b>55.99</b>



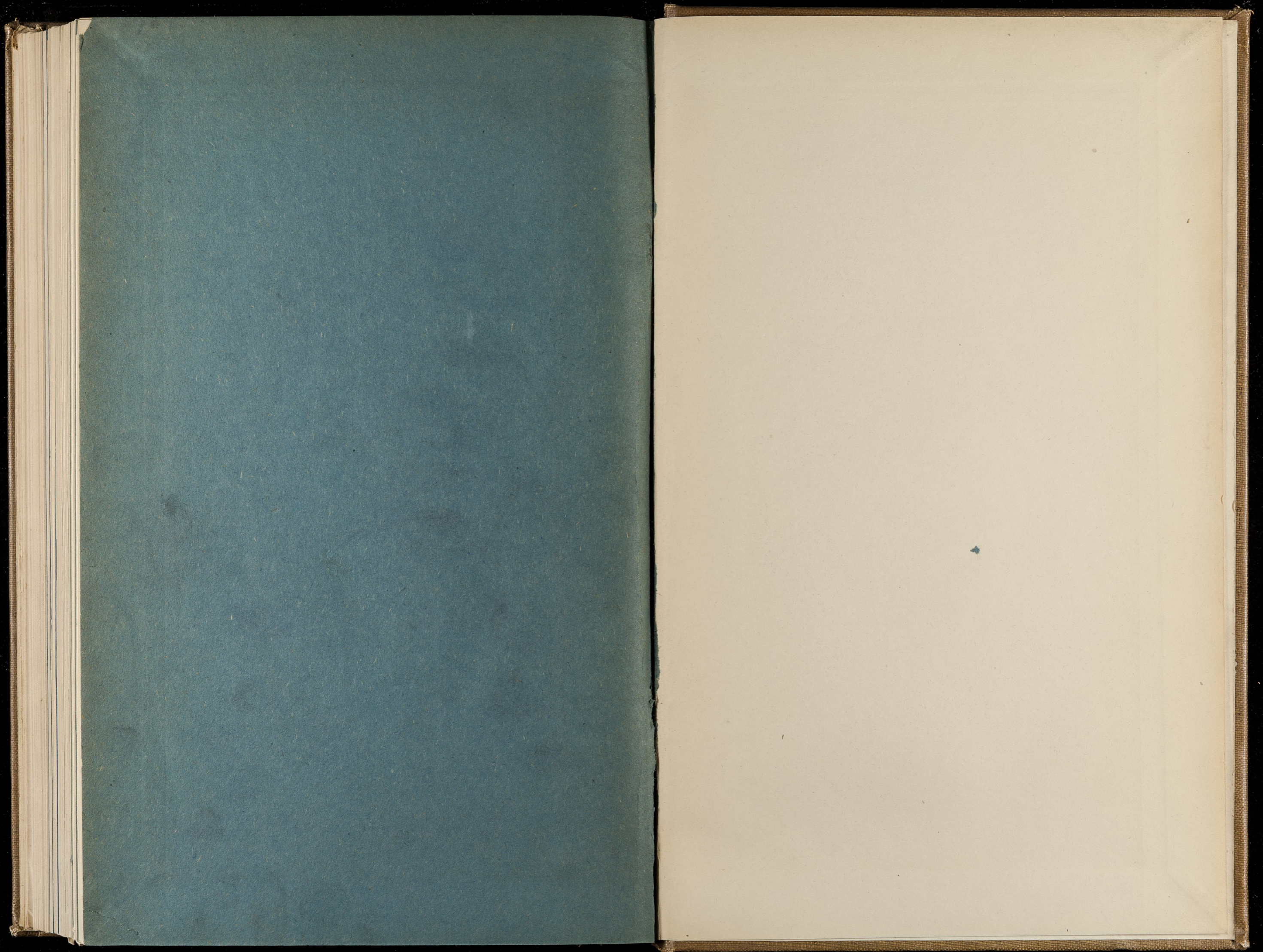
EDUCATION PAMPHLETS—(Continued):

	Price s. d.
20 School Board Act and Regulations (English) ... ..	1912 0 9
Do. do. do. (Dutch) ... ..	5 3
Education Commission, Minutes of Evidence, Vol. 1-4, 1911 (English only) ... ..	each 6 0
Explosive Act with Regulations, 1911 ... ..	1 0
Fencing Act, No. 17, 1912 (English and Dutch) ... ..	0 6
Field-Cornet's Manual, 1904 (English) ... ..	2 0
French Refugees at the Cape, (Cloth) C. Graham Botha ... ..	5 0
Geodetic Survey of South Africa, Vol. I., 1894 ... ..	7 6
Do. Do. Vol. II., 1899 ... ..	10 6
<i>Geslacht Register der Oude Kaapske Familien:</i>	
Vol. 1, A-J, ½ Cloth ... ..	nett 7 6
Do. do. ½ Calf ... ..	14 0
Vol. 2, A-O, ½ Cloth ... ..	nett 7 6
Do. do. ½ Calf ... ..	11 6
Vol. 3, P-Z, ½ Cloth ... ..	nett 7 6
Do. do. ½ Calf ... ..	13 9
Do. do. ½ Calf ... ..	20 0
1 Set Vols. 1, 2, and 3, ½ Cloth nett	21 0
<i>Gazette, Cape Govt. Proclamations and Principal Govt. Notices, Index to, 1803-1881 ... ..</i>	6 6
<i>Gazette, Cape Govt. Proclamations and Principal Govt. Notices, Index to, 1881-1891 ... ..</i>	4 0
<i>Gazette, Cape Govt. Proclamations and Principal Govt. Notices, Index to, 1891-1901 ... ..</i>	6 6
<i>Gazette, Cape Govt. Index to, to June, 1906 (½ yearly) ... ..</i>	each 1 6
<i>Gazette, Cape Govt. Index to, July, 1906, to December, 1909 (½ yearly) ... ..</i>	each 2 6
<i>Gazette, Cape Govt. Index to, January, 1910, to 30th May, 1910 ... ..</i>	2 6
<i>Gazette, Union Govt. Index to, June to September, 1910 ... ..</i>	nett 5 0
<i>Gazette, Union Govt. Index to, January, 1911, to March, 1914 ... ..</i>	nett 5 0
<i>Gazette, Union Govt. Index to, April, 1914, to September, 1918 (Quarterly) ... ..</i>	nett 2 6
<i>Gazette, Cape Official, Index to, June to December, 1910 ... ..</i>	1 6
<i>Gazette, Cape Official, Index to, January to June, 1911 ... ..</i>	1 0
<i>Gazette, Cape Official, Index to, July, 1911, to December, 1918 (½ Yearly) ... ..</i>	1 6
<i>Gazette, Cape Official, Index to, January-June, 1919 ... ..</i>	0 6
Grigaland West, Laws of, 1871-1880 ... ..	6 6
Historical Documents (Theal), Dutch, 1896, Vols. 1 and 2 ... ..	each 1 6
Historical Documents (Theal), Dutch, 1911, Vol. 3 Horse, Diseases of and their Treatment, by Dr. Hutchison (English or Dutch) ... ..	4 0
House of Assembly, Index to Annexures and Printed Papers, 1854-97, 1898-1903 and 1904-1910 ... ..	each 7 6
House of Assembly, Standing Orders, 1919, Vol. 1, "Public Business" E. or D. ... ..	3 6
House of Assembly, Standing Orders, 1919, Vol. 2, "Private Bills" E. or D. ... ..	1 6
Insolvency, Act to Consolidate and Amend the Laws relating to, (No. 32 of 1916) ... ..	1 0
Irrigation and Conservation of Waters Act 8-1912, together with Amendment Act 26-1916 E. or D. ... ..	2 6
Irrigation and Conservation of Waters Act 8-1912, together with Amendment Act 26-1916, Regulations, Pts 1-6, E. or D. ... ..	2 6
Irrigation in America, 1915 (Lewis) ... ..	10 6
Justices of the Peace, Manual for the guidance of, 1891 (Tennant) ... ..	10 0
Kaffir War of 1835, Documents relating to the (Theal) ... ..	10 6
Leprosy, Handbook on, 1896 (Impey) ... ..	12 0
Liquor Laws, 1900 ... ..	9
Magistrates Courts Act 32, 1917 (Svo.) E. & D. ... ..	1 0
Manual of Criminal Procedure (Cloth) E. & D. ... ..	10 0
Marine Investigations in South Africa, Vol. I. ... ..	20 0
Do. Do. Vol. II. ... ..	15 0
Do. Do. Vol. III. ... ..	20 0
Do. Do. Vol. IV. ... ..	20 0
Miners' Phthisis Commission Report of the, 1911, English or Dutch ... ..	each 2 0
Miners' Phthisis Prevention Committee, General Report of the 1916 ... ..	7 6

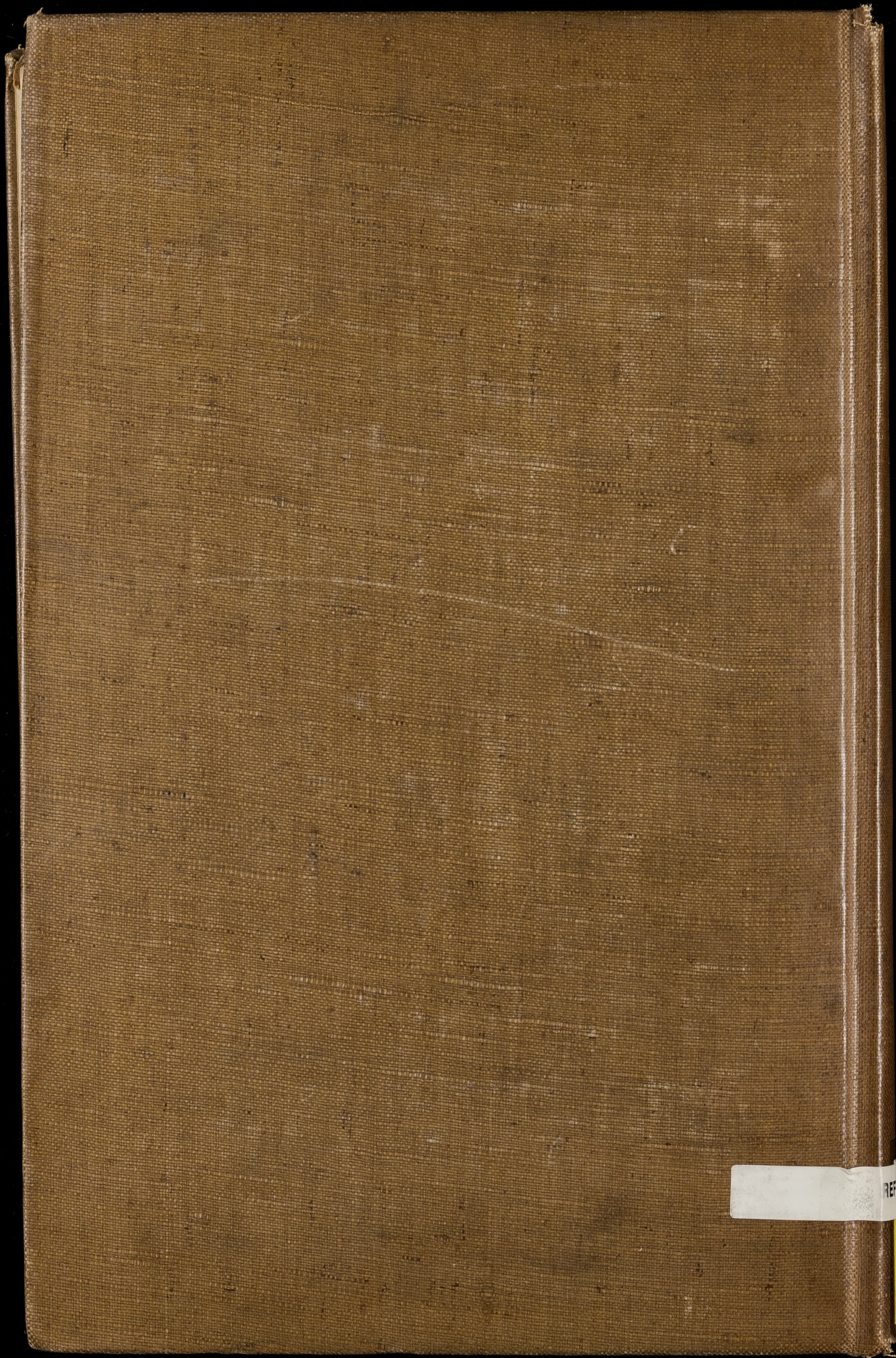
	Price s. d.
Mines Works and Machinery Act with Regulations, 1911 ... ..	2 6
Native Appeal Court Records, 1912-17 (Cloth) ... ..	17 6
Do. do. do. (½ Calf, Interleaved) ... ..	21 0
Do. do. do. (Cloth, Interleaved) ... ..	18 6
Native Territories, Statutes, Proclamations and Government Notices in force on the 30th June, 1907 ... ..	Bound, non interleaved 16 6
Ordinances, Cape Provincial 1911 ... ..	1 0
Do. do. do. 1912 ... ..	2 0
Do. do. do. 1913 ... ..	1 0
Do. do. do. 1914 ... ..	1 0
Do. do. do. 1915 ... ..	1 0
Do. do. do. 1916 ... ..	1 6
Do. do. do. 1917 ... ..	2 0
Do. do. do. 1918 ... ..	1 6
Do. do. do. 1919 ... ..	1 6
Do. Natal do. 1911 ... ..	3 0
Do. do. do. 1912 ... ..	2 6
Do. Orange Free State Provincial, 1911 ... ..	3 6
Do. do. do. 1912 ... ..	2 6
Do. Transvaal Provincial, 1911-12 ... ..	2 6
Patents: Act to Consolidate and Amend the Laws relating to the granting of Letters Patent for Inventions and for the Registration of Patents, Designs, Trade Marks and Copyright (No. 9 of 1916) ... ..	1 0
Patents: Regulations, etc., framed under the Patents, Designs, Trade Marks and Copyright Act (No. 9 of 1916) E. or D. ... ..	each 1 0
Postal Route Map, Mounted on Rollers ... ..	6 6
Do. do. Unmounted ... ..	1 0
Pounds and Trespass Act 15, 1892 ... ..	0 8
Precious Minerals Act, No. 31, 1898 ... ..	1 4
Do. Do. Amendment, No. 16, 1907 ... ..	0 6
Do. Do. Amendment No. 27, 1907 ... ..	0 5
Provincial Council, Rules of Procedure of the, 1914, E. or D. ... ..	each 3 9
Public Health Act, 1919 ... ..	2 0
Public Service List, 1919 ... ..	5 0
Records of Cape Colony (Theal), Vols. 3-35 (1789-1831), per Vol. ... ..	17 6
Records of Cape Colony (Theal), Register of Contents, Vols. 1-35 ... ..	17 6
Records of South East Africa (Theal), Vols. 2-9 per Vol. ... ..	17 6
Rural Council, Rules and Regulations for the Guidance of the ... ..	nett 0 4
Senate, Standing Orders, 1913, E. & D. ... ..	7 6
Do. do. relating to Private Bills, E. & D. ... ..	7 6
Sheriff's Instructions (Revised), 1908 ... ..	6 0
Stamp Duties Handbook, with Decisions of the Inland Revenue Department, 1916 ... ..	2 6
Statute Law of the Cape of Good Hope, 1896 to 1900 ... ..	each 1 2 6
Do. Do. Do. Do. 1902 to 1906 ... ..	with index
Statute Law of the Cape of Good Hope, Index to, 1896-1900 (Bound) ... ..	21 0
Statute Law of the Cape of Good Hope, Index to, 1902-1906 (Stitched) ... ..	5 0
Statutory Regulations, 1910-16—	
Vol. 1, A—De, E. & D., Cloth ... ..	10 6
Vol. 2, De—H. do. ... ..	10 6
Vol. 3, I—M. do. ... ..	10 6
Vol. 4, M—P. do. ... ..	10 6
Vol. 5, P. do. ... ..	10 6
Vol. 6, S.—We. do. ... ..	10 6
Statutory Regulations, 1917, Vol. 1, B—Ra. ... ..	10 6
Statistical Registers ... ..	21 0
Statistical Year Book, 1912/13 [U.G. 32-14] ... ..	7 6
Do. do. 1913/14 [U.G. 14-15] ... ..	10 6
Do. do. 1914/15 [U.G. 17-16] ... ..	10 6
Do. do. do. [U.G. 26-16] ... ..	0 6
(Supplement) ... ..	
Supreme Court, Rules of ... ..	1 0
South Africa Act (Union) ... ..	nett 0 6
Do. Index to ... ..	nett 0 6
South African National Convention Minutes, English or Dutch ... ..	5 0
Trade and Shipping, Monthly Statement of the, each ... ..	3 0
Do. do. Annual Statement of the, each ... ..	30 0
Transfer Duty, Law of, 1894 ... ..	2
Village Management Boards, Acts of Parliament, relating to ... ..	3 6

CAPE COLONY COAT OF ARMS, IN COLOUR:  
SHEET 22 1/2" x 17 1/2", 1s. 3d. each.









REF