

## COLONY OF NATAL.

CENSUS, 1904.

## PART XIII.—SUPPLEMENTARY TABLES.

## Ecclesiastical Returns.

In connection with the Religious Denominations throughout the Colony, the Government deemed it advisable to obtain as much information as possible, and, for this purpose, a Special Ecclesiastical Form (No. 9) was prepared and issued with other Forms at the time of the Census taking.

This Form was delivered to Ministers, or responsible persons in charge, of every Church, Chapel, Mission Station, or other Places of Worship throughout the Colony, the instructions on the Form being made as clear as possible to ensure a faithful record of the information required.

In Part III of this Report particulars have already been given concerning the numerous Religious Beliefs of the people, as obtained through the medium of the Householders' Schedules, but these records are entirely distinct, and were obtained, as stated above, from records supplied by responsible persons of the various Denominations.

This information relates particularly to the Number of Places of Worship; Average Attendance; Number of Persons who can be accommodated; Number of Communicants, (Europeans being shown separately); Number of Regular Services; Number of Sunday Schools, and Attendance; with Number of Baptisms, Marriages, and Burials.

Also, a Financial Statement, which, like the above, has been compiled from the numerous Forms returned.

For the whole Colony a record is given shewing the total number of Communicants to be 55,874—Males 24,347, Females 31,527. Of these there are 14,652 Europeans or Whites—Males 6,885, Females 7,767; and Other than Europeans or Whites, 41,222—Males 17,462, Females 23,760. Also, for 424 Sunday Schools with an average attendance of 16,760 Scholars.

The Returns further show that 10,450 Baptismal, 2,225 Marriage, and 2,144 Burial Services were solemnized by Ministers of the various Denominations.

The Total Income for the Year is £130,420, made up of Offertory Collections, £49,710; Grants and Special Contributions, £27,159; Pew Rents, £4,439; Church Fees, £2,110; Income from Land, £3,191; Loans and Capital Receipts, £31,530; and Sundry Receipts, £12,281.

The Total Expenditure, as shown by the Returns, was £133,621, slightly in excess of the Income. This amount was arrived at by Payments in Aid of Missions, £5,933; Education, £8,578; and Synodical Funds, £799. Interest and Charges on Debts amounted to £2,372, Payments in support of Sick £1,206, Hospital and Poor £772. In Loans and Capital Expenditure a sum of £28,440 was expended, for Buildings, Repairs, and Furniture £25,876, Salaries and Allowances to Ministers £50,205, and Miscellaneous Expenses £9,440.



Part XII. Table IV—Summary, Shewing the Number of Persons, "All Races," Males and Females, returned as Convicts and Prisoners with degrees of Education and Conjugal Condition, according to the Census Returns for April, 1904.

## EDUCATION.

Status.	Europeans or Whites.			Indians and Asiatics.			Mixed and Others.			Natives.			Total All Races.		
	P.	M.	F.	P.	M.	F.	P.	M.	F.	P.	M.	F.	P.	M.	F.
Totals	194	189	5	382	349	33	66	63	3	1,862	1,718	144	2,504	2,319	185
Read and Write ...	169	165	4	52	52	...	23	23	...	82	75	7	326	315	11
Read Only ...	2	2	...	2	2	...	...	...	...	13	13	...	17	17	...
Neither Read nor Write ...	15	14	1	328	295	33	43	40	3	1,762	1,625	137	2,148	1,974	174
Unspecified ...	8	8	...	...	...	...	...	...	...	5	5	...	13	13	...

## CONJUGAL CONDITION.

Condition.	Europeans or Whites.			Indians and Asiatics.			Mixed and Others.			Natives.			Total All Races.		
	P.	M.	F.	P.	M.	F.	P.	M.	F.	P.	M.	F.	P.	M.	F.
Totals	194	189	5	382	349	33	66	63	3	1,862	1,718	144	2,504	2,319	185
Married ...	47	43	4	137	114	23	22	21	1	710	620	90	916	798	118
Widowed ...	7	7	...	6	4	2	1	...	1	45	28	17	59	39	20
Unmarried ...	139	138	1	226	218	8	42	41	1	1,096	1,061	35	1,503	1,458	45
Unspecified ...	1	1	...	13	13	...	1	1	...	11	9	2	26	24	2

## PART XIII.—SUPPLEMENTARY TABLES.

## Ecclesiastical Returns.

In connection with the Religious Denominations throughout the Colony, the Government deemed it advisable to obtain as much information as possible, and, for this purpose, a Special Ecclesiastical Form (No. 9) was prepared and issued with other Forms at the time of the Census taking.

This Form was delivered to Ministers, or responsible persons in charge, of every Church, Chapel, Mission Station, or other Places of Worship throughout the Colony, the instructions on the Form being made as clear as possible to ensure a faithful record of the information required.

In Part III of this Report particulars have already been given concerning the numerous Religious Beliefs of the people, as obtained through the medium of the Householders' Schedules, but these records are entirely distinct, and were obtained, as stated above, from records supplied by responsible persons of the various Denominations.

This information relates particularly to the Number of Places of Worship; Average Attendance; Number of Persons who can be accommodated; Number of Communicants, (Europeans being shown separately); Number of Regular Services; Number of Sunday Schools, and Attendance; with Number of Baptisms, Marriages, and Burials.

Also, a Financial Statement, which, like the above, has been compiled from the numerous Forms returned.

For the whole Colony a record is given shewing the total number of Communicants to be 55,874—Males 24,347, Females 31,527. Of these there are 14,652 Europeans or Whites—Males 6,885, Females 7,767; and Other than Europeans or Whites, 41,222—Males 17,462, Females 23,760. Also, for 424 Sunday Schools with an average attendance of 16,760 Scholars.

The Returns further show that 10,450 Baptismal, 2,225 Marriage, and 2,144 Burial Services were solemnized by Ministers of the various Denominations.

The Total Income for the Year is £130,420, made up of Offertory Collections, £49,710; Grants and Special Contributions, £27,159; Pew Rents, £4,439; Church Fees, £2,110; Income from Land, £3,191; Loans and Capital Receipts, £31,530; and Sundry Receipts, £12,281.

The Total Expenditure, as shown by the Returns, was £133,621, slightly in excess of the Income. This amount was arrived at by Payments in Aid of Missions, £5,933; Education, £8,578; and Synodical Funds, £799. Interest and Charges on Debts amounted to £2,372, Payments in support of Sick £1,206, Hospital and Poor £772. In Loans and Capital Expenditure a sum of £28,440 was expended, for Buildings, Repairs, and Furniture £25,876, Salaries and Allowances to Ministers £50,205, and Miscellaneous Expenses £9,440.



Table shewing the number of Places of Worship; the extent of Accommodation, Average Attendance, number of Communicants of All Races, Europeans or Whites, and Other than Europeans or Whites, the number of Regular Services held during the Year preceding the Census, the number of, and average Attendance at Sunday Schools, the number of Baptisms, Marriages, and Burials solemnized, in combination with Receipts and Expenditure, as returned at the Census of April, 1904:—

For all Denominations.	Places of Worship.		Number of Communicants.				Number of Regular Services held during the year preceding the Census.				Sunday Schools.		Number of Baptisms, Marriages and Burials during the year preceding the Census.					
	Number	Average Attendance at Principal Services during the year preceding the Census.	All Races.		Europeans or Whites.		Other than Europeans or Whites.		Fortnightly.	Monthly.	Quarterly.	Number.	Average Attendance during the year preceding the Census.	Baptisms.	Marriages.	Burials.		
			Males	Females	Males	Females	Males	Females									Weekly.	
Totals	1,223	161,350	93,499	24,347	31,527	6,885	7,767	17,462	23,760	5,946	247	385	823	424	16,760	10,450	2,225	2,144

For all Denominations.	Receipts.				Expenditure.				Total.							
	Offer-tory, Collec-tions, etc.	Grants and Special Contri-butions.	Pew Rents	Church Fees.	Income from Land.	Loans and Capital Receipts.	Sundry Receipts.	Total.		Payments in aid of.	Interest and Charge of Debt.	Payments in Support of.	Loans and Capital Expen-diture.	Build-ings, Repairs and Furni-ture.	Miscellaneous.	Salaries and Allow-ances to Minis-ters.
Totals	49,710	27,159	4,439	2,110	3,191	31,530	12,281	130,420	5,933	2,372	772	28,440	25,876	9,440	50,205	133,621

### Natal Harbour Board (Shipping).

To obtain information relating to all Vessels, Boats, etc., in Natal Waters on Midnight of the 17th April, 1904, a Special Ship's Form was prepared (see Schedule No. 2). The Port Captain, Port of Natal, undertook to obtain the necessary information, and all Forms were duly submitted to him for distribution. Assisted by his Staff, every Craft was visited, and the results were in due course forwarded to the Head Office.

Information relating to 595 Vessels and Boats, of every description, was sent in, and from these Schedules the following results have been obtained:—70 Steamers, 152 Sailing Craft, and 378 of other classes, with a total Horse Power of 29,543½.

Of these 32 were built of Iron, 53 of Steel, and 508 of Wood, and 2 of Composite (a number of Pleasure Boats are included in the foregoing figures).

The registered Tonnage of the whole was 77,356 nett and 106,328 gross.

The full complement of Crews was 2,192, whilst the the total Passenger Accommodation was 3,139, including 735 First Class accommodation, 408 Second Class, and 1,996 Steerage.

The following Summary gives complete Returns:

#### SUMMARY, SHEWING THE TOTAL NUMBER OF ALL VESSELS, BOATS, ETC., IN NATAL WATERS, ON THE NIGHT OF 17TH APRIL, 1904.

Steamers.	Sailing Vessels.	Other Classes.	Horse Power.	Built of Iron.	Built of Steel.	Built of Wood.	Composite.
70	152	378	29,543½	32	53	508	2

Registered Tonnage.		Compliment of Crews.	Passenger Accommodation.			
Nett.	Gross.		First.	Second.	Steerage.	Total.
77,356	106,328	2,192	735	408	1,996	3,139



## Passengers, Natal Government Railways.

For the Enumeration of all Persons and Live Stock, travelling on the Natal Government Railways at midnight on 17th April, 1904, special Books with Duplicate Pass Forms, were provided (see Traveller's Book, No. 17).

Great assistance was rendered by the Railway Authorities in this work, and by their valuable arrangements, much expense was saved, and a safe and trustworthy enumeration obtained.

In addition to our Book of Instructions, a special circular was issued by the General Manager of Railways, which we publish for general information and future guidance:—

### NATAL GOVERNMENT RAILWAYS.

M. T. No. 5738.

PRIVATE.

*For the information and guidance of the Officers and Staff of the Railway Department only.*

2221

GENERAL MANAGER'S OFFICE,

DURBAN, 31st March, 1904.

#### NOTICE TO THE STAFF.

*Census of Persons travelling by Rail on the night of 17th April, 1904, in connection with General Census of the Colony.*

1. In connection with the General Census of the Colony of Natal, a Census will be taken of all persons travelling by, or employed on Passenger and Goods Trains throughout the System, with all Live Stock belonging to, or in charge of, such persons at midnight on *Sunday, 17th April, 1904*, under the following arrangements:

2. Enumerators will be appointed to overtake the work and they must make a careful study of the instructions issued by the Census Commissioner for their guidance, viz., the "Enumerator's Instruction and Memorandum Book;" the "Special Railway and Road Travellers' Householder's Form;" the "Coloured Races (other than Natives) Form No. 5;" and the Native Householder's Form No. 7; in order that the duties may be carried out in a thoroughly efficient and accurate manner. If in doubt on any point, they must refer the matter to this Office, so that it may be made perfectly clear to them beforehand.

3. The Enumerators deputed to attend to the various Passenger Trains will require to travel by those Trains and to timeously warn all Passengers, who will be in the Train at midnight, what will be required of them at that hour, so that they may be prepared to impart the information without delay. Coloured Races and Natives may be recorded *en route* providing they will still be in Train at midnight. Assistant Enumerators must promptly report themselves to the Chief Enumerators.

4. The Census will be taken at the Stations indicated, even although the Trains may be running late, but the Chief Enumerator will be held responsible for seeing that all Passengers leaving the Train between midnight and the arrival at that Station are duly recorded. In the event, however, of a Train being cancelled from any cause, before reaching the Station arranged

to take the Census of that Train, Telegraphic advice must be sent to that Station by the Station cancelling the Train, and the former will be held responsible for arranging for the Census to be taken at one of the Stations possessing the necessary forms, and at which the Train will be at, about midnight. In the event of Special or other Trains not enumerated herein being run, the responsibility will devolve upon the District Station Master, who arranges for the Train to be run, to take the necessary action to ensure the Census being taken at, or about midnight.

5. The Census Forms (Nos. 5, 7 and 17) are to be carefully filled in with the information required, according to respective races, in *indelible pencil*, by the Enumerators at or about midnight, at the Stations hereinafter indicated.

6. Europeans only are to be entered *in detail* on No. 17 (bound in book form for convenience); and these are to be numbered consecutively from 1 upwards by each Enumerator, the "Pass" for the Traveller being given a corresponding number. Each Pass and counterfoil, however, drawn from this Book for Coloured Races or Natives (see example) must bear the number of Schedule upon which they are recorded, but this must not be allowed to interfere with the consecutive order of the European entries, and, to simplify matters as far as possible, the Chief Enumerators must arrange for certain Enumerators to be confined to the Third Class carriages. Both the Form and Pass are to be signed by the Traveller and Enumerator when filled in, on the spaces so indicated, and the Pass handed to the Traveller with instructions that it is to be handed to the person in charge of the first house at which the Traveller will stop.

7. All Coloured Persons, Indians, Arabs, etc. (Natives excepted), are to be enumerated on Form 5, and a Pass given to each person with a number to correspond with the Schedule Number (see example) from Book Form No. 17.

8. All Natives are to be enumerated on Form No. 7, and a Pass given to each person from Book Form No. 17 (see example) in the same manner as indicated in the preceding clause (7). The object of this is to keep the Natives together, and distinct from the other Coloured Races and the Europeans.

9. Each Enumerator will treat himself as a Passenger, and record in the Census "Special Railway and Travellers' Householder's Form," particulars with respect to himself. Interpreters, Policemen, and Trainmen must not be overlooked.

10. The work must be carried out as expeditiously as possible, so as to cause the least possible delay to the Trains, and the hearty co-operation of the Staff is enjoined to meet this end.

11. When the Census has been taken and all the Forms, including the first page indicating particulars of the Train in Book No. 17, the Book and other Forms are to be carefully done up and addressed to the General Manager of Railways (Traffic Department), Durban, at which office they are to be delivered by hand, or to be booked through Parcels Department by the Chief Enumerator for each Train, to whom the Assistants will hand their Books and other Forms immediately they are completed. All unused Forms, Schedules and Pencils, must be returned.

12. The Stationmasters or Staff Custodians, as the case may be, will arrange to protect Trains during the time they are in the occupation of the Main or Running Lines at the respective Stations whilst the Enumerators are at work.

13. The Railway Police Superintendent, Durban, to timeously arrange for the attendance of the Policemen at the Stations hereinafter mentioned.

14. The Chief Labour Clerk to arrange for the Interpreters to join No. 86 at Durban, No. 33 at Ladysmith, and No. 55 at Glencoe Junction, and they are to promptly report themselves to the Chief Enumerators at those Stations.

15. Railway Passes for the Staff employed on this work to be issued by the District Superintendents concerned, or timeously obtained by the Heads of each Department.



16. The District Superintendents, to satisfy themselves that the Enumerators thoroughly understand what is required of them, and that all is in order (Chief Traffic Inspector Kellock will attend to this so far as the Durban District is concerned).

17. In the event of any of the Enumerators being, from any cause, unable to attend, they must promptly notify, and return all Forms to their District Superintendent, or in the case of the Durban District to the General Manager (Traffic Department), and these Officers are to immediately arrange substitutes from those indicated, or otherwise, and satisfy themselves that they thoroughly understand their duties.

18. The following are particulars as to Stations, Trains, Times and Enumerators:—

Train No.	Station at which Census is to be Taken.	Time Train is due to Arrive.	Time Train is due to Depart.	Names of Enumerators.		Substitutes.
				Chief Enumerator.	Assistant Enumerators.	
86	HILTON ROAD ...	12 0	12 1	Inspector Kellock ...	Station Master—A. Watts. Night Clerks—Milne and Hamilton. Conductor Davis. Assistant Conductor Stone. R.S.M. McAinsh. " Forbes. " Galloway. " A. Jamieson (Durban). R. C. Palframan. Interpreters—Native and Indian. One Policeman.	
33	BALGOWAN ...	12 6	12 11	Inspector Edwards ...	Inspector Jessiman. Station Master—G. Gibb. Night Clerk—James Bell. R.S.M. Chandler. " W. Ellis. " A. Buchan. " J. Brandon. " Knox. Interpreters—Native and Indian. One Policeman.	Maritzburg District. Guards— Jennings. Jeffray. Phipps. Short. Martin. McNab. W. Jones.
80	MOOI RIVER ...	11 136	11 148	Inspector Stone ...	Station Master—R.S.M. Johnstone. Night Clerks—Thompson & Bruce. R.S.M. Sparrow. " Jamieson. " Young. " McGregor. R. C. Watts. Ticket Inspt. Finnie. One Policeman.	
55 286 288	ELANDS LAAGTE " " ... " " ...	12 2 11 50 11 55	12 3 12 5 12 15	Inspector Hanafey ...	Station Master—A. Chisholme. Night Clerk—W. Hughson. Inspector Bulman. R.S.M. Garden. " Rennie. " Menzies. " Buchanan. R. C. Kerr. Interpreters—Native and Indian. One Policeman.	Ladysmith District. Clerks— Murdock. Banks. Mackintosh. Guards— Whittaker. Forbes.  Newcastle District. Clerks— Hodgson. Milne.

### CENSUS 1904.—COLONY OF NATAL.

#### SPECIAL HOUSEHOLDER'S FORM

For Persons Travelling by Rail on the Night of 17th April, 1904.

1. Name and Surname.....
2. Sex..... | 3. Relation to Head of Family.....
4. Condition as to Marriage.....
5. Age last Birthday.....
6. Profession or Occupation }.....
7. Where receiving Instruction.....
8. Education.....
9. Religious Denomination.....
10. Race.....
11. Where Born.....
12. Sickness and Infirmities.....
13. Name of Place and.....
- 13A. District where ordinarily Resident.....
14. Name of Place at which Traveller intends to pass the night.....
15. Whether or not Travelling in charge of Live Stock\* }.....

Signature (or Mark) of Traveller.....

Signature of Enumerator.....

\* Live Stock to be recorded on the other side.

### CENSUS 1904.—COLONY OF NATAL.

#### PASS

To Persons Travelling by Rail on the Night of 17th April, 1904.

**TO ALL WHOM IT MAY CONCERN.**

TAKE NOTICE that I have this day been supplied with and have recorded full particulars for Census purposes in regard to—

Name and Surname.....

Resident of.....

Dated at..... this 17th day of April, 1904.

Signature of Enumerator }

\* N.B.—Live Stock to be recorded on the other side.

Hand this Pass to the Person in charge of the first House at which you stop after leaving the Train.



Train No.	Station at which Census is to be Taken.	Time Train is due to Arrive.	Time Train is due to Depart.	Names of Enumerators.	
				Chief Enumerator.	
4	DURBAN ...	...	12 10	}	E. Campbell
4a	" ...	...	12 35		
114	BELLAIR ...	11 143	11 152		P. Curry
110	PINETOWN ...	11 140	12 4	}	W. A. Oliver
112	" ...	12 16	12 30		
108	WYEBANK ...	11 147	11 151		W. Kerr
104	HILL CREST ...	11 147	11 155		D. Campbell
98	BOTHA'S HILL ...	11 138	...		J. Smith
94	INCHANGA ...	11 144	12 5	}	H. McCullum
3	" ...	11 57	12 20		
92	CATO RIDGE ...	11 158	12 10	}	A. Heron
5	" ...	11 24	12 20		
15	THORNVILLE JCT.	11 154	12 5		W. H. Domleo
17	MARITZBURG ...	...	12 1		C. Pirrie
218	ZWAARTKOP ...	11 10	11 38	}	J. H. Miller
220	" ...	11 56	11 57		
216	CEDARA ...	11 152	12 19		A. C. Stone
214	TWEEDIE ...	12 4	12 5		D. Robertson
206	BALGOWAN ...	11 141	12 20		Geo. Gibb
204	NOTTINGHAM RD.	11 143	12 19		J. Allan
199	WILLOW GRANGE	11 153	11 159		C. Borland
201	BEACON HILL ...	11 154	12 11		W. G. Robertson
203	ENNERSDALE ...	11 143	11 52	}	F. Hall
205	" ...	11 48	11 57		
209	FRERE ...	12 6	12 18		H. Thorsen
211	COLENZO ...	11 151	12 20	}	J. P. Lyle
213	" ...	11 56	12 25		
215	UMBULWANA ...	11 158	12 8	}	R. R. Blane
217	" ...	12 3	12 19		
279	HATTING SPRUIT	11 122	11 140		W. S. Sutherland
231	NEWCASTLE ...	11 149	12 45		S. Sim
235	CHARLESTOWN ...	...	11 150		D. Duncan

Acknowledge receipt by First Train.

DAVID HUNTER,  
General Manager.

AT

PASS FOR LIVE STOCK

in charge of the Person enumerated on the other side—(Continued).

Bulls.....	Goats (Angora).....
Milch Cows.....	Goats (other).....
Oxen.....	Pigs.....
Other Cattle.....	Ostriches.....
Stud Stallions.....	Dogs.....
Brood Mares.....	Fowls and Ducks.....
Horses and Mares (other).....	Geese.....
Mules.....	Turkeys.....
Asses.....	Rabbits.....
Sheep (woolled).....	
Sheep (other).....	

Signature, or Mark,  
of Traveller.....  
Signature of Enumerator.....

LIVE STOCK

Travelling with and in charge of the Person enumerated on the other side—  
(Continued).

Bulls.....	Goats (Angora).....
Milch Cows.....	Goats (other).....
Oxen.....	Pigs.....
Other Cattle.....	Ostriches.....
Stud Stallions.....	Dogs.....
Brood Mares.....	Fowls and Ducks.....
Horses and Mares (other).....	Geese.....
Mules.....	Turkeys.....
Asses.....	Rabbits.....
Sheep (woolled).....	
Sheep (other).....	

Signature, or Mark,  
of Traveller.....  
Signature of Enumerator.....



### General Progress Since 1895.

Before bringing this Report to a close, it has been thought desirable to add as a Supplement certain particulars from the General Statistics of the Colony for the years 1895 and 1904, for the purpose of marking in what degree the Colony has made progress in the intercensal period in matters lying beyond the scope of a Census, *e.g.*, Public Finance, Production, Modes of Transport, Communication, Accumulation, Trade, &c. For this purpose the following Abstract has been compiled in a form convenient for tracing the changes which have taken place.

GENERAL STATISTICAL SUMMARY FOR THE YEARS 1895 AND 1904, SHEWING THE DIFFERENCE BETWEEN THE TWO YEARS.

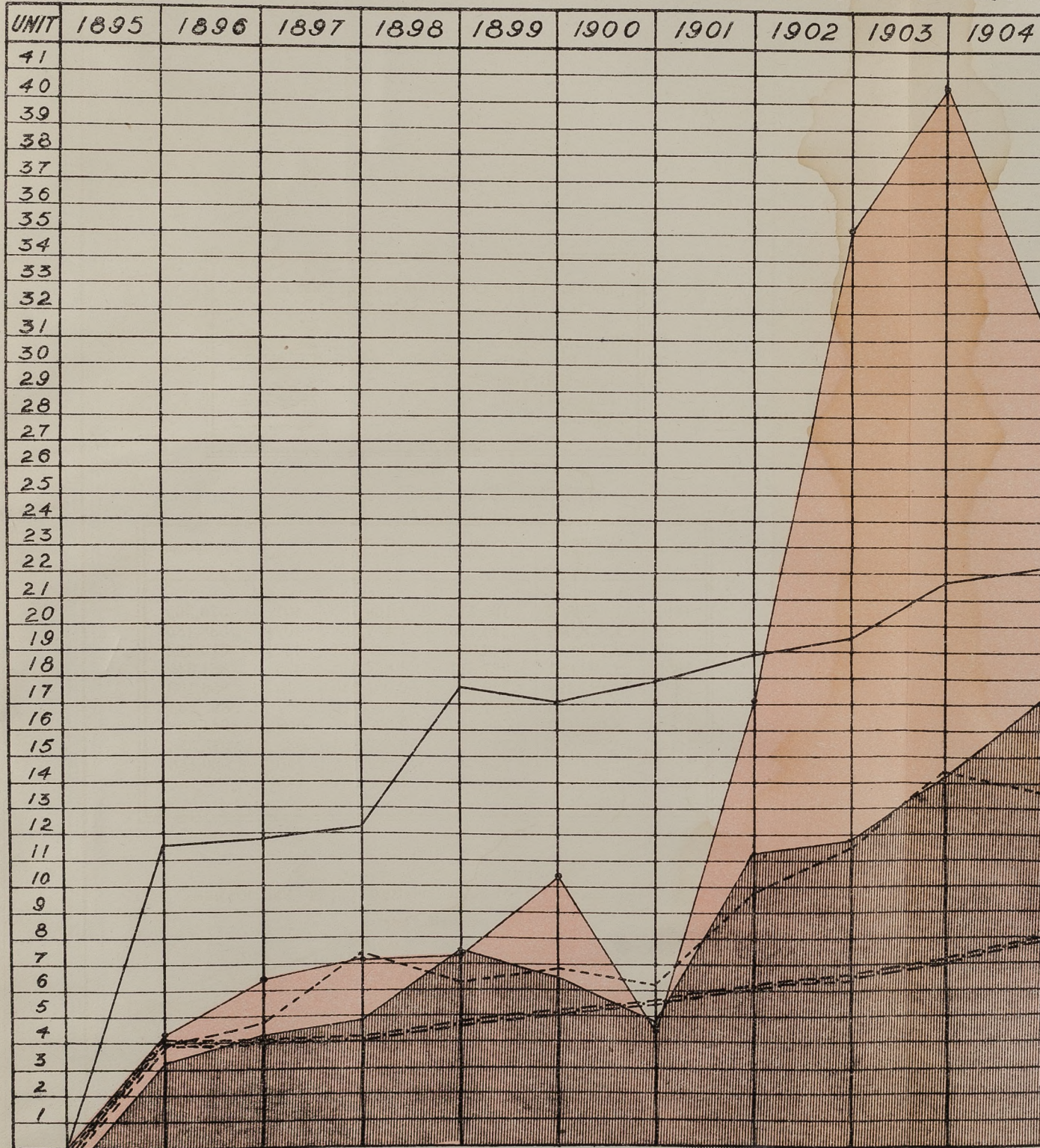
For fuller details see separate Tables.

Table		1895.	1904.	Increase since 1895.	
				Absolute.	Per Cent.
1	<b>PUBLIC FINANCE—</b>	£	£	£	
	Public Debt of the Colony ... ..	8,054,343	16,019,143	7,964,800	98.88
	Revenue ... ..	1,169,780	4,160,145	2,990,365	255.63
	Expenditure ... ..	1,148,093	4,071,438	2,923,345	254.62
	Interest on Loans ... ..	309,578	557,466	247,888	124.88
	Sinking Fund ... ..	262,333	443,700	181,367	69.13
3	<b>REVENUE—</b>				
4	From Customs ... ..	212,351	800,952	588,601	277.18
5	„ Excise ... ..	20,350	69,113	48,763	239.62
6	„ Port and Harbour ... ..	26,003	75,917	49,914	191.95
	„ Post Office ... ..	54,730	136,405	81,675	149.23
	„ Telegraph Service ... ..	15,767	58,370	42,603	270.20
	„ Railways... ..	436,410	2,499,323	2,062,913	472.70
	<b>IMPORTS</b> ... ..	2,469,303*	11,078,650	8,609,347	348.61
	<b>EXPORTS</b> ... ..	1,318,502*	9,400,771	8,082,269	612.99
2	<b>SHIPPING—</b>	Tons	Tons	Tons	
	Tonnage Inwards ... ..	788,495*	2,108,658	1,320,163	167.42
	„ Outwards ... ..	781,511	2,155,332	1,373,821	175.79
7	<b>POST OFFICE—</b>	Number	Number	Number	
	Letters and Post Cards Received ... ..	5,776,046	19,724,848	13,948,802	241.49
	Newspapers ... ..	2,620,896	4,770,792	2,149,896	82.03
	Packets and Parcels ... ..	1,324,786	2,967,692	1,642,906	124.01
	<b>TELEGRAPH—</b>				
	Miles of Line ... ..	790 Miles	1,793 Miles	1,003 Miles	126.96
	Number of Messages Forwarded ... ..	264,916	634,067	369,151	130.34
9	<b>RAILWAYS—</b>				
	Miles Open ... ..	401 Miles	799½ Miles	398½ Miles	99.26
	Cost of Construction ... ..	£6,117,211	£11,170,487	£5,053,276	82.62
	Train Miles ... ..	1,322,664	4,292,028	2,969,364	224.50
	<b>COAL PRODUCED</b> ... ..	Tons	Tons	Tons	
	160,115	858,298	698,183	436.05	
	<b>POPULATION</b> ... ..	Number	Number	Number	
	576,369	1,108,754	532,385	92.36	
10	<b>TRADE OF THE COLONY</b> ... ..	£	£	£	
	3,787,805	20,479,421	16,691,616	440.66	
11	<b>TOWN AND BOROUGH DURBAN—</b>				
	Current Loan ... ..	513,200	1,794,000	1,280,800	249.57
	Capital Value Rateable Property ... ..	Approximate 2,823,630	Approximate 9,411,590	6,587,960	233.31
12	<b>TOWN AND BOROUGH PIETERMARITZBURG—</b>				
	Current Loan ... ..	167,600	1,004,900	837,000	499.58
	Capital Value Rateable Property ... ..	Approximate 1,441,342	Approximate 4,921,740	3,480,398	241.47
13	<b>TOWN AND BOROUGH LADYSMITH—</b>				
	Current Loan ... ..	45,000	61,000	16,000	35.55
	Capital Value Rateable Property ... ..	Approximate 89,686	Approximate 398,085	308,399	343.86
14	<b>TOWN AND BOROUGH NEWCASTLE—</b>				
	Current Loan ... ..	8,000	16,000	8,000	100.00
	Capital Value Rateable Property ... ..	Approximate 103,850	Approximate 283,613	179,763	173.10
8	<b>GOVERNMENT SAVINGS BANKS</b> ... ..	116,705	438,268	321,563	295.53



COLONY OF NATAL. CENSUS, 1904.

PROGRESS OF THE COLONY OF NATAL 1895 TO 1904.



REFERENCE.

PROGRESS OF THE COLONY OF NATAL, 1895 TO 1904.

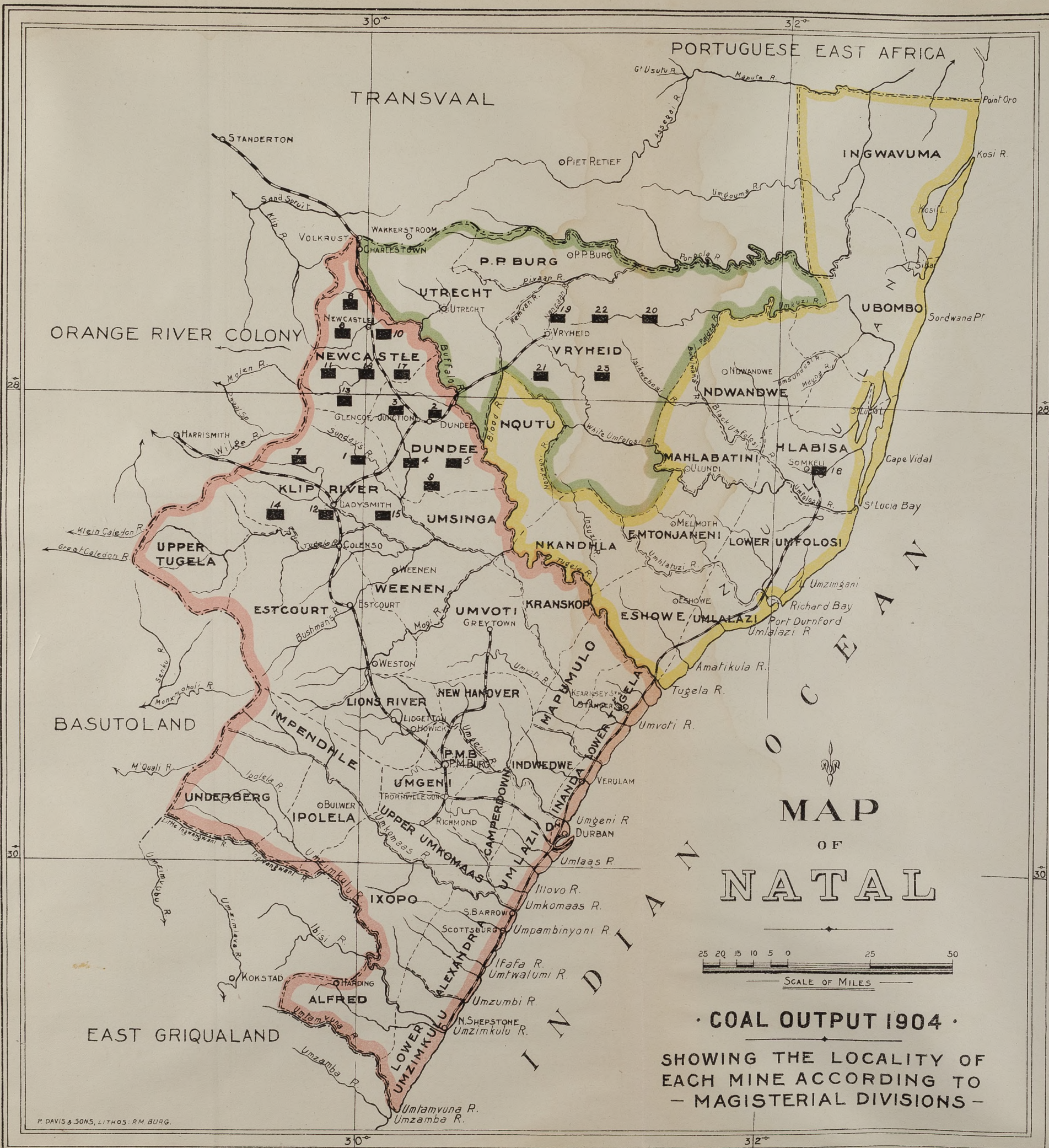
General Exports*	...	...	...	
Coal Produced†	...	...	...	
General Revenue*	...	...	...	
Railways Open‡	...	...	...	
Population	...	...	...	

YEAR.	General Exports.	Coal Produced.	General Revenue.	Railways Open.	Population.
	£	Tons.	£	Miles.	
1895	1,318,502	160,115	1,169,780	401	576,369
1896	1,926,035	216,106	1,457,338	402½	588,185
1897	2,170,607	243,960	2,213,074	420½	614,522
1898	2,202,021	387,811	1,964,314	475	881,349
1899	3,185,498	328,693	2,081,349	518	856,168
1900	1,343,445	241,330	1,886,710	567	892,844
1901	5,120,137	569,200	2,970,741	609	941,898
1902	10,527,008	592,821	3,439,820	635	975,523
1903	12,268,814	713,548	4,334,175	710	1,089,156
1904	9,400,771	858,298	4,160,145	799½	1,108,754

\*—Unit, £300,000. †—Unit Tons, 50,000. ‡—Unit, 100 Miles.  
 ||—Unit, 50,000.

GENERAL EXPORTS INCLUDE OVERLAND, OVERSEA, AND BULLION & SPECIE.





COAL OUTPUT, 1904.

REFERENCE.

No.	Mine.	Tons Produced
1	Elandslaagte ...	161,197
2	Natal Navigation... ..	156,710
3	Dundee ... ..	108,302
4	Glencoe ... ..	75,577
5	St. Georges ... ..	73,385
6	Durban Navigation ... ..	67,597
7	Natal Steam Coal ... ..	38,705
8	Newcastle ... ..	37,967
9	South African ... ..	34,120
10	Crown ... ..	27,568
11	West Lennoxton ... ..	24,750
12	Ramsay ... ..	18,633
13	No. 42 ... ..	9,824
14	Natal Merthyr ... ..	8,169
15	Central ... ..	6,155
16	Zululand ... ..	5,243
17	Star ... ..	2,292
18	Cambrian ... ..	1,500
19	Vryheid ... ..	268
20	Vrede ... ..	229
21	Hlobane ... ..	45
22	Vaalbank ... ..	36
23	Langkrans ... ..	26
	Total	858,298



PUBLIC FINANCE.

Table I.—Public Revenue, Expenditure, and Public Debt, per head of Population, from 1895 to 1904.

Year.	Revenue.		Expenditure.		Public Debt.		Interest Charges.		Accumulated Sinking Funds.	
	Revenue per head of Population. "All Races."		Expenditure per head of Population. "All Races."		Public Debt per head of Population. "All Races."		Interest Charges.		Accumulated Sinking Funds.	
	£	£ s. d.	£	£ s. d.	£	£ s. d.	£	s. d.	£	s. d.
1895	1,169,780	2 0 7	1,148,093	1 19 10	8,054,343	13 19 6	309,578	12 8	262,333	17 9
1896	1,457,338	2 9 7	1,282,484	2 3 7	8,054,343	13 13 10	309,578	12 8	294,308	9 11
1897	2,213,074	3 12 0	1,624,998	2 12 10	8,019,143	13 1 0	307,466	12 8	275,135	5 2
1898	1,964,314	2 4 7	1,512,318	2 1 1	8,019,143	9 2 0	307,466	12 8	308,650	17 3
1899	2,081,349	2 8 7	1,914,724	2 4 8	9,019,143	10 10 8	337,466	12 8	320,196	16 7
1900	1,886,710	2 2 3	1,955,087	2 3 9	9,019,143	10 2 0	337,466	12 8	343,702	12 4
1901	2,970,741	3 3 1	2,499,580	2 13 1	10,574,143	11 4 7	384,116	12 8	367,809	14 0
1902	3,439,820	3 10 6	3,052,645	3 2 7	12,519,143	12 16 8	442,466	12 8	392,958	16 5
1903	4,334,175	3 19 7	*5,102,006	4 13 8	14,019,143	12 10 9	487,466	12 8	418,308	13 8
1904	4,160,145	3 15 0	4,071,438	3 13 5	16,019,143	14 9 0	557,466	12 8	443,700	16 7

\* Includes War Expenditure, £964,750.

Public Debt for Year 1904, was £164 19s. 3d. per head of the European or White Population.

SHIPPING, IMPORTS AND EXPORTS.

Table II.

Year.	Shipping.					Year.	Imports and Exports.			
	Inwards.		Outwards.		Shipping Entered and Cleared per Head of Population. "All Races."		Imports.	Imports per Head of Population. "All Races."	Exports.	Exports per Head of Population. "All Races."
	Number of Vessels.	Tonnage.	Number of Vessels.	Tonnage.						
1895	540	788,495	535	781,511	Tons.	1895	£	£ s. d.	£	£ s. d.
1896	740	1,071,196	727	1,063,797	2-72	1896	2,469,303	4 5 8	1,318,502	2 5 9
1897	780	1,246,390	789	1,248,073	3-63	1897	5,667,750	9 12 8	1,926,035	3 5 6
1898	690	1,264,591	687	1,262,231	4-06	1898	6,001,969	9 15 4	2,170,607	3 10 8
1899	*734	1,397,306	716	1,381,346	2-86	1899	5,369,672	6 1 10	2,202,021	2 9 11
1900	*770	1,417,539	751	1,405,180	3-24	1899	6,718,518	7 16 11	3,185,498	3 14 5
1901	*945	1,826,526	919	1,767,902	3-16	1900	6,694,501	7 9 11	1,343,445	1 10 1
1902	*955	1,929,427	945	1,904,184	3-81	1901	10,187,704	10 16 4	5,120,137	5 8 8
1903	*952	1,979,218	961	2,005,396	3-93	1902	15,656,052	16 0 11	10,527,008	10 15 10
1904	*912	2,108,658	938	2,155,332	3-65	1903	16,600,259	15 4 10	12,268,814	11 5 3
					3-84	1904	11,078,650	9 19 10	9,400,771	8 9 7

\* Transports are not included.

Imports and Exports are inclusive of Bullion and Specie.



COLONY OF NATAL. CENSUS, 1904.

APPROXIMATE RETURNS.

Table III.—Contributions to PUBLIC REVENUE by "EUROPEANS OR WHITES," including other than "Natives," and "Indians and Asiatics," in relation to the Internal Trade of the Colony, and in combination with the Oversea, and Overberg Trade for a period of 10 years—from 1895 to 1904.

Year.	Customs, Excise, Port and Harbour.	Land Revenue.	Stamps, Licenses and Dues.	Post Office.	Telegraph Service.	Railways.	Land Sales.	Miscellaneous.	Grand Total.	Population.	Per Head of Population. Europeans or Whites, including Mixed and Others.
	£	£	£	£	£	£	£	£	£	Number.	
1895	194,482	7,169	44,765	52,542	15,296	484,989	43,054	80,575	922,872	47,522	19 8 4
1896	290,557	8,340	45,374	44,113	21,420	659,199	35,678	65,617	1,170,298	50,274	23 5 6
1897	465,437	8,226	54,236	54,550	22,237	1,208,766	41,907	59,774	1,915,133	55,241	34 13 4
1898	396,215	9,317	67,005	56,508	24,857	915,812	37,140	84,970	1,591,824	58,639	27 2 11
1899	452,158	8,993	69,654	57,027	25,825	957,666	44,547	87,469	1,703,339	62,356	27 6 3
1900	547,137	7,253	51,606	66,749	42,088	656,274	74,448	61,976	1,507,531	69,951	21 11 0
1901	686,513	12,379	83,465	82,269	49,960	1,399,150	56,893	59,191	2,429,820	75,821	32 0 11
1902	879,506	16,915	95,278	95,000	76,365	1,508,139	57,170	87,142	2,814,795	83,095	33 17 9
1903	1,073,010	12,795	100,361	166,298	62,001	2,109,911	67,063	140,635	3,732,074	92,542	40 6 6
1904	819,966	12,519	94,919	130,949	56,621	2,320,220	56,830	92,124	3,584,148	103,795	34 10 7
	5,804,981	103,186	706,663	806,005	396,670	12,220,126	514,730	819,473	21,371,834	699,236	
	Average per Head of Population.	Average per Head of Population.	Average per Head of Population.	Average per Head of Population.	Average per Head of Population.	Average per Head of Population.	Average per Head of Population.	Average per Head of Population.	Average per Head of Population.		Average per Head for 10 years.
	£8 6 4	2s. 11d.	£1 0 2	£1 3 0	11s. 4d.	£17 9 6	14s. 8d.	£1 3 5			£30 11 4

COLONY OF NATAL. CENSUS, 1904.

APPROXIMATE RETURNS.

Table IV.—Contribution to PUBLIC REVENUE by "INDIANS AND ASIATICS," for a period of ten years—1895 to 1904.

Year.	Customs, Excise, Port and Harbour.	Fines and Fees.	Post Office.	Telegraph Service.	Railways.	Land Sales.	Miscellaneous.	Grand Total.	Population.	Per Head of Population. Indians and Asiatics.
	£	£	£	£	£	£	£	£	Number.	
1895	18,094	9,054	1,094	314	13,898	2,266	4,331	49,051	46,343	1 1 2
1896	16,399	10,807	918	440	23,375	1,877	3,527	57,343	49,643	1 3 1
1897	15,481	12,060	1,136	458	20,671	2,205	3,213	55,224	54,561	1 0 3
1898	21,913	14,939	1,177	512	22,597	1,954	4,568	67,660	59,858	1 2 8
1899	24,345	11,649	1,188	532	25,877	2,344	4,702	70,637	60,756	1 3 3
1900	28,195	9,759	1,390	866	36,786	3,918	3,331	84,245	65,925	1 5 7
1901	32,685	20,239	1,714	1,030	48,857	2,994	3,182	110,701	72,965	1 10 4
1902	41,106	19,602	4,130	1,574	59,056	3,008	4,685	133,161	78,004	1 14 2
1903	38,766	22,372	3,464	1,278	47,852	3,529	7,560	124,821	81,390	1 10 8
1904	51,490	19,217	2,728	1,166	48,406	2,991	4,952	130,950	100,918	1 5 11
	288,474	149,698	18,939	8,170	347,375	27,086	44,051	883,793	670,363	
	Average per Head of Population.	Average per Head of Population.	Average per Head of Population.	Average per Head of Population.	Average per Head of Population.	Average per Head of Population.	Average per Head of Population.	Average per Head of Population.		Average per Head for 10 years.
	8s. 7½d.	4s. 5½d.	6¾d.	2¾d.	10s. 4¼d.	9¼d.	1s. 4¾d.			£1 6 4½



COLONY OF NATAL. CENSUS, 1904.

APPROXIMATE RETURNS.

Table V—Contribution to PUBLIC REVENUE by "NATIVE POPULATION," for a period of 10 years—from 1895 to 1904.

Year.	Customs, Excise, Port and Harbour.	Land Revenue.	Stamps, Licences and Dues. Hut Tax included.	Fines and Fees.	Post Office.	Telegraph Service.	Railways.	Miscellaneous.	Grand Total.	Population.	Per Head of Population Natives.
	£	£	£	£	£	£	£	£	£	Number.	s. d.
1895	46,128	3,584	89,532	18,107	1,094	157	37,523	1,732	197,857	482,504	8 2
1896	47,487	4,169	90,749	21,613	918	220	63,130	1,411	229,697	488,268	9 5
1897	47,549	4,113	108,473	24,120	1,136	229	55,812	1,285	242,717	504,720	9 7
1898	71,108	4,658	134,011	29,879	1,177	256	61,914	1,827	304,830	762,852	8 0
1899	67,066	4,496	139,310	23,297	1,188	266	69,869	1,881	307,373	733,056	8 4
1900	66,098	3,627	103,211	19,519	1,390	433	99,324	1,332	294,934	756,968	7 9
1901	81,208	6,189	166,930	40,479	1,714	515	131,913	1,272	430,220	793,112	10 10
1902	87,761	8,098	190,558	39,205	4,130	787	159,451	1,874	491,864	814,424	12 1
1903	89,089	6,397	200,723	44,744	3,464	639	129,200	3,024	477,280	915,224	10 5
1904	74,526	6,259	189,837	38,436	2,728	583	130,697	1,981	445,047	904,041	9 10
	678,020	51,590	1,413,334	299,399	18,939	4,085	938,833	17,619	3,421,819	7,155,169	
	Average per Head of Population.	Average per Head of Population.	Average per Head of Population.	Average per Head of Population.	Average per Head of Population.	Average per Head of Population.	Average per Head of Population.	Average per Head of Population.	Average per Head of Population.		Average per Head for 10 years.
	1s. 10½d.	1½d.	3s. 11½d.	10d.	¾d.	¼d.	2s. 7½d.	½d.			9s. 6½d.

COLONY OF NATAL. CENSUS, 1904.

APPROXIMATE RETURNS.

Table VI.—Sources of PUBLIC REVENUE from 1895 to 1904, per head of Population—"ALL RACES."

Year.	Customs.	Excise.	Port and Harbour.	Land Revenue.	Stamps, Licences and Dues.	Fines and Fees.	Post Office.	Telegraph Service.	Railways.	Per Head. Miscellaneous.	Per Head. All Races.				
	£	£	£	£	£	£	£	£	£	£	s. d.				
1895	212351	7 4	20350 0 9	26003 0 11	10753 0 4	4 8	27161 0 11	54730	1 11	15767 0 6	536410 0 187	45320 1 7	86638	3 1	2 0 7
1896	296159	10 1	19612 0 8	38672 1 4	12509 0 5	4 8	32420 1 1	45949	1 7	22080 0 9	745704 1 5	4 37555 1 3	70555	2 5	2 9 7
1897	459421	14 11	20217 0 8	48829 1 7	12339 0 5	5 3	36180 1 4	56822	1 10	22924 0 9	1285249 2 1	9 44112 1 5	64272	2 1	3 12 0
1898	423985	9 7	21893 0 6	43358 1 0	13975 0 4	4 7	44818 1 0	58862	1 4	25625 0 7	1000323 1 2	8 39094 6 11	91365	2 1*	2 4 7
1899	473421	11 1	28294 0 8	41854 0 11	13489 0 4	4 10	34946 0 9	59403	1 4	26623 0 8	1053412 1 4	8 46891 1 1	94052	2 3	2 8 7
1900	560415	12 7	28909 0 8	52106 1 2	10880 0 3	3 6	29278 0 8	69529	1 6	43387 0 11	792384 0 17	9 78366 1 9	66639	1 6	2 2 3
1901	699999	14 10	41912 0 10	58495 1 4	18568 0 5	5 4	60718 1 5	85697	1 9	51505 1 1	11579920 1 13	6 59887 1 3	63645	1 4	3 3 1
1902	889402	18 3	50421 1 0	68550 1 5	24293 0 6	5 10	58807 1 3	103260	2 1	78726 1 7	1726646 1 15	5 30178 1 3	93701	1 11	3 10 6
1903	1068640	19 8	54367 1 0	77858 1 5	19192 0 4	5 6	67116 1 3	173226	3 2	63918 1 2	2286963 2 2	0 70592 1 3	151219	2 10†	3 19 7
1904	800952	14 5	69113 1 3	75917 1 4	18778 0 4	5 1	57653 1 1	136405	2 5	58370 1 1	2499323 2 5	1 59821 1 1	99037	1 10	3 15 0

\* Includes £12,596 taken over from Zululand Government.

† Includes £24,769 Revenue received from New Territory.



POST AND TELEGRAPHS.  
Table VII.

Year.	Transmission of Letters and Post Cards.		Transmission of Newspapers.		Transmission of Packets and Parcels.		Miles of Line Opened and Number of Messages.	
	Transmission of Letters and Post Cards.	Per Head of Population All Races.	Transmission of Newspapers.	Per Head of Population All Races.	Transmission of Packets and Parcels.	Per Head of Population All Races.	Miles of Line.	Number of Messages.
1895	5,776,046	10·02	2,620,896	4·54	1,324,786	2·29	790½	264,916
1896	6,137,640	10·43	2,304,688	3·91	1,399,138	2·37	794½	307,408
1897	7,199,128	11·71	2,551,814	4·14	1,326,914	2·15	967½	330,034
1898	8,021,011	9·10	2,698,151	3·06	1,418,031	1·60	1237¾	352,690
1899	8,532,960	9·96	2,906,461	3·39	1,420,350	1·65	1337¼	497,466
1900	9,234,363	10·34	2,805,503	3·14	1,269,180	1·42	1422¾	716,824
1901	15,196,064	16·13	3,820,388	4·05	2,683,135	2·84	1512	830,314
1902	18,956,236	19·43	4,040,556	4·15	4,997,356	5·12	1598	960,126
1903	21,694,244	19·91	5,035,472	4·62	3,537,040	3·24	1722	723,648
1904	19,724,848	17·79	4,770,792	4·30	2,967,692	2·67	1793	634,067

In the above Totals only the Number of Letters, Post Cards, Newspapers, Packets and Parcels received is given.

DEPOSITS IN GOVERNMENT SAVINGS BANKS, 1895—1904.  
Table VIII.

Year.	Amount.	Population.	Per Head of Population. All Races.	Depositors, All Races.
1895	£ 116,705	576,369	£ s. d. 0 4 1	6,963
1896	141,730	588,185	0 4 10	8,260
1897	179,957	614,522	0 5 10	9,863
1898	184,621	881,349	0 4 2	10,932
1899	215,811	856,168	0 5 0	11,581
1900	343,510	892,844	0 7 8	14,506
1901	443,397	941,898	0 9 5	17,666
1902	573,978	975,523	0 11 9	20,178
1903	563,951	1,089,156	0 10 4	22,243
1904	438,268	1,108,754	0 7 10	21,633

## NATAL GOVERNMENT RAILWAYS.

Table IX.

Year.	Gauge.	Gross Earnings.	Working Expenses.	Net Earnings.	Per Train Mile.			Cost of Construction and Equipment of Lines open for traffic.	Interest returned on Capital.
					Gross Earnings.	Working Expenses.	Net Earnings.		
		£	£	£	s. d.	s. d.	s. d.	£	per cent.
1895	3 ft. 6 in.	526,494	278,756	247,738	7 11·53	4 2·58	3 8·95	6,117,211	4·05
1896	"	1,136,214	421,990	714,224	9 11·75	3 8·47	6 3·28	6,236,555	11·45
1897	"	1,051,359	583,088	468,271	8 8·08	4 9·72	3 10·36	6,588,507	7·10
1898	"	986,417	589,815	396,602	7 1·70	4 3·24	2 10·46	6,950,621	5·70
1899	"	940,100	628,942	311,158	6 10·01	4 6·87	2 3·14	7,267,588	4·28
1900	"	1,242,280	891,089	351,191	7 11·57	5 8·55	2 3·02	7,808,216	4·49
1901	"	1,650,355	1,159,026	491,329	7 7·08	5 3·96	2 3·12	8,528,989	5·76
1902	"	2,046,116	1,434,023	612,093	9 2·34	6 5·33	2 9·01	9,271,691	6·60
1903	"	2,561,551	1,791,108	770,443	10 6·72	7 4·60	3 2·12	10,572,962	7·28
1904	"	1,933,933	1,531,210	402,723	9 0·14	7 1·62	1 10·52	11,170,487	3·60

## TOTAL TRADE.

Table X.

Year.	Total Trade.	Population.	Per Head of Population, All Races.
	£	Number.	£ s. d.
1895	3,787,805	576,369	6 11 5
1896	7,593,785	588,185	12 18 2
1897	8,172,576	614,522	13 6 0
1898	7,571,693	881,349	8 11 9
1899	9,904,016	856,168	11 11 4
1900	8,037,946	892,844	9 0 0
1901	15,307,841	941,898	16 5 0
1902	26,183,060	975,523	26 16 9
1903	28,869,073	1,089,156	26 10 1
1904	20,479,421	1,108,754	18 9 5



## TOWN AND BOROUGH OF DURBAN.

Table XI.

Year.	Capital Value of Rateable Property.	Fair Average Annual Rental of all Rateable Property.	Current Loans.	Average per head European or White Population on Loans.	Average per head European or White Population for Interest.	Accumulated Sinking Fund.
	£	£	£	£	£ s. d.	£
1895	2,823,630	141,181	513,200	36	1 17 1	84,281
1896	3,045,530	152,276	644,000	40	1 18 3	97,588
1897	4,101,600	205,080	644,000	36	1 14 10	111,826
1898	4,668,950	233,447	674,000	34	1 12 2	123,683
1899	4,987,320	249,366	969,000†	47	2 0 6	131,673
1900	5,626,695	281,334	944,000*	34	1 8 11	121,766
1901	5,966,200	298,310	1,194,000	42	1 15 4	143,074
1902	6,748,410	337,420	1,494,000	49	2 1 3	157,651
1903	8,553,285	427,664	1,494,000	49	2 1 1	178,072
1904	9,411,590	470,579	1,794,000	57	2 7 6	186,958

† Public Baths Debentures paid off £5,000. \* Toll Debentures paid off £25,000.

NOTE.—The Average per head of the entire Population (All Races) on Current Loan at 1904 was £26 8s. 10d.

## TOWN AND BOROUGH OF PIETERMARITZBURG.

Table XII.

Year.	Capital Value of Rateable Property.	Fair Average Annual Rental of all Rateable Property.	Current Loans.	Average per head European or White Population on Loans.	Average per head European or White Population for Interest.	Accumulated Sinking Fund.
	£	£	£	£	£ s. d.	£
1895	1,441,342	100,893	167,600	16	1 0 1	31,789
1896	1,486,342	104,043	167,600	15	0 19 2	31,820
1897	1,561,820	109,327	203,900	17	0 18 5	33,231
1898	2,229,205	156,044	203,500	16	0 18 7	35,718
1899	2,393,410	167,538	402,000	31	0 19 4	32,986
1900	2,524,320	201,945	402,000	20	0 15 6	36,510
1901	2,863,030	229,042	402,300	20	0 19 2	35,552
1902	3,398,605	254,895	721,800	38	1 8 4	34,510
1903	3,861,860	270,330	714,400	41	1 10 2	60,903
1904	4,921,740	319,913	1,004,900	66	2 1 8	61,248

NOTE.—The Average per head of the entire Population (All Races) on Current Loan at 1904 is £32 4s. 2d.

## TOWN AND BOROUGH OF LADYSMITH.

Table XIII.

Year.	Capital Value of Rateable Property.	Fair Average Annual Rental of all Rateable Property.	Current Loans.	Average per Head European or White Population on Loans.	Average per Head European or White Population for Interest.	Accumulated Sinking Fund.
	£	£	£	£	£ s. d.	£
1895	89,686	7,174	45,000	22	1 2 1	...
1896	101,314	9,118	45,000	22	1 2 1	...
1897	105,676	10,567	48,000	22	1 2 2	...
1898	130,972	13,097	48,000	21	1 1 2	...
1899	176,220	17,622	48,000	20	1 0 3	...
1900	252,729	27,800	48,000	20	1 0 3	...
1901	191,134	21,024	48,000	19	0 19 9	602
1902	273,720	30,109	48,000	19	0 17 11	1,128
1903	389,284	38,928	61,000	21	1 1 8	1,811
1904	398,085	39,808	61,000	27	1 7 9	2,733

NOTE.—The average per head of the entire population, "All Races," on Current Loans at 1904, is £10 19s. 1d.

## TOWN AND BOROUGH OF NEWCASTLE.

Table XIV.

Year.	Capital Value of Rateable Property.	Fair Average Annual Rent of all Rateable Property.	Current Loans.	Average per head European or White Population on Loans.	Average per head European or White Population for Interest.	Accumulated Sinking Fund.
	£	£	£	£	£ s. d.	£
1895	103,850	9,340	8,000	9	0 9 5	...
1896	107,610	9,684	8,000	9	0 9 5	...
1897	111,000	9,990	10,000	11	0 10 7	...
1898	113,466	10,206	10,000	12	0 10 4	...
1899	126,280	11,538	15,000	16	0 15 3	...
1900	126,280	11,538	15,000	15	0 13 6	...
1901	138,251	13,825	15,000	12	0 10 10	...
1902	204,109	20,410	15,000	12	0 10 10	...
1903	257,206	23,150	16,000	13	0 11 9	...
1904	283,613	24,000	16,000	13	0 12 7	...

NOTE.—The average per head of the entire population, "All Races," on Current Loans at 1904, is £5 8s. 6d.



## TOWN AND BOROUGH OF DUNDEE.

Table XV.

Year.	Capital Value of Rateable Property.	Fair Average Annual Rental of all Rateable Property.	Current Loans.	Average per head European or White Population on Loans.	Average per head of European or White Population for Interest.	Accumulated Sinking Fund.
	£	£	£	£	£ s. d.	£
1895	No Local Govt.	3,010	Nil	Nil	Nil	Nil
1896	"	3,525	"	"	"	"
1897	92,505	3,815	"	"	"	"
1898	92,505	4,625	10,000	12	0 12 6	"
1899	109,810	5,490	"	11	0 10 11	"
1900	145,130	7,256	"	10	0 16 7	"
1901	148,455	8,915	"	9	0 8 9	"
1902	185,545	14,688	"	9	0 8 3	"
1903	223,980	17,731	"	8	0 7 9	"
1904	318,765	18,258	"	7	0 7 7	"

NOTE.—The Average per Head of the entire Population, "All Races," on Current Loans for 1904, is £3 11s. 2d.

## LOCAL BOARD, GREYTOWN.

Table XVI.

Year.	Capital Value of Rateable Property.	Fair Average Annual Rental of all Rateable Property.	Current Loans.	Average per head European or White Population on Loans.	Average per head of European or White Population for Interest.	Accumulated Sinking Fund.
	£	£	£	£	£ s. d.	£
1895	Not available.	Not available.	Nil	Nil	...	Nil
1896	"	"	"	"	...	"
1897	"	"	"	"	...	"
1898	65,095	3,905	"	"	...	"
1899	73,280	4,396	"	"	...	"
1900	88,020	5,281	"	"	...	"
1901	95,988	5,759	"	"	...	"
1902	115,841	6,950	18,000	23	1 4 5	"
1903	140,235	8,414	18,000	23	1 4 5	"
1904	145,785	8,747	18,000	16	0 16 7	"

NOTE.—The Average per Head of the entire Population, "All Races," on Current Loans at 1904, is £7 7s. 9d.

## Cost of Enumeration.

The cost of Enumeration is mainly determined by the work involved :—

1. In travelling from Dwelling to Dwelling throughout each particular District.
2. On the number of the Population recorded on the Householders' Schedules.

In sparsely-populated Districts, the greater portion of the time and expense of the Enumerator is absorbed in travelling from Dwelling to Dwelling, the proportion to each District varying with the density of the Population, increasing relatively with sparsity and decreasing relatively with density. The relative cost per head, on the other hand, progress inversely to absolute cost and to relative cost per square mile. Hence it follows that as a population increases in density the cost per head becomes less and less, while the absolute cost and cost per square mile really increases with the density, although at a different proportionate rate. Thus it happens that the more densely populated Urban Districts of the Colony (Durban and Pietermaritzburg), for this Census, only show respectively a cost per head of 1.37d. and 1.03d. for Enumeration, while some of the Rural Districts cost as much as 3.10d. Reckoning by Area, however, reverses this Order; the cost of Enumeration in Rural Districts being as low as 7d. per square mile, while the cost in Urban Districts is as high as £19 9s. 9d. per square mile. The cost of Enumeration of a progressive Place, District, or Country, should show under similar conditions absolute increase at each succeeding Census, relatively to cost per head; the former with an increasing tendency and the latter with a decreasing one.

In connection with the subject of cost, two Tables have been prepared, the first Table shows for each Magisterial Division or Centre the cost of Enumeration, at per square mile, and at per head of the Population; and in the same way the cost per square mile, and at per head of Population is shown in relation to Head Office expenses, also the Population for each Race, *Males and Females*, with proportion per cent. in relation to the entire Population of the Colony, and for each Magisterial Division separately. The second Table is a summary giving particulars as to the distribution of Field Expenditure, and Central Office Expenditure, the cost per square mile, and cost per head being clearly shown in relation to Total Expenditure.

These Tables will be of special interest to our Magistrates and others, who acted as responsible Census Officers, and valuable for reference in relation to some of the vital statistics for each Magisterial Division or Centre, embracing :—

1. Cost of Enumeration at per Square Mile, and at per Head.
2. Cost of Stationery, Printing, Carding, Tabulation, and Central Office expenses at per Square Mile, and per Head.
3. European or White Population, with proportion per cent. in relation to entire Population.
4. Indian and Asiatic Population, with proportion per cent. in relation to entire Population.
5. Mixed and Other Population, with proportion per cent. in relation to entire Population.
6. Native Population, with proportion per cent. in relation to entire Population.
7. Total Field Expenditure, with particulars of distribution.
8. Total Central Office Expenditure, with particulars of distribution.
9. Cost per Square Mile summarized.
10. Cost per Head of Population summarized.

A study of the following Tables show clearly how cost per head diminishes with increasing density of Population, while a contrary increase, in absolute cost, and cost per Square Mile invariably happens with increase in the density of the Population. A low cost per head, therefore, taken by itself, is no test of economy, for it can only be reduced as the absolute cost and cost per unit of area increases. These Tables also show the entire cost for Enumeration, Tabulation, Printing, and Head Office Expenses, and is the best evidence that can be afforded of the care taken to secure the information required at the lowest cost, consistent with efficiency.



Supplementary Table, shewing for each Magisterial Division or Centre the cost of Enumeration, and Head Office Expenses, at per head of the Population, and at per Square Mile separately, in combination with Population for each Race and proportion per cent. in relation to the entire Population of the Colony, Males and Females, according to the Census Returns for April, 1904.

Table with columns for Section, Magisterial Division or Centre, Field Expenditure (Cost of Enumeration, Cost per Square Mile, Cost per Head), Central Office Expenses (Cost for Stationery, Printing, & Head Office Expenses, Cost per Square Mile, Cost per Head). Rows include Klip River, Lion's River, Ixopo, Alexandra County, etc., ending with Passengers N.G. Railways.

Supplementary Table shewing for each Magisterial Division or Centre the cost of Enumeration, and Head Office Expenses, at per head of the Population, and at per Square Mile separately, in combination with Population for each Race and proportion per cent. in relation to the entire Population of the Colony, Males and Females, according to the Census Returns for April, 1904.

Table with columns for European or White Population, Indian and Asiatic Population, Mixed and Other Population, All Native Population. Sub-columns for Numerical, Centesimal, M, F. Rows include various population groups and their respective costs.



## SUMMARY.

FIELD EXPENDITURE (Collection of data) ... ..	£5,510	16	4				
CENTRAL OFFICE EXPENDITURE (Tabulation of data) ... ..	£6,709	3	6	£12,219	19	10	
DETAILS OF FIELD EXPENDITURE.							
	Amount.			Average Each.			
Magistrates as Chief Census Officers ... ..	—	—	—	—	—	—	—
Sergeants, N. M. Police as Chief Enumerators including Civilians ... ..	350	16	9	8	7	0	
Troopers, N. M. Police as Enumerators including Civilians... ..	3,991	9	7	6	4	4	
Interpreters (Indian, Dutch, German and Native) ... ..	886	14	6	6	7	7	
MISCELLANEOUS.							
Hire of Tents, Carriage on Parcels ... ..	281	15	6				
Rations to Natives and Messengers ... ..							
Other Contingencies in the Field ... ..							
Total Field Expenditure ... ..	£5,510	16	4		5,510	16	4
DETAILS OF CENTRAL OFFICE EXPENDITURE.							
Head Office Salaries—Tabulating Clerks ... ..	4,733	10	8				
Head Office Rent ... ..	229	3	4				
Stationery, Printing, including General Report ... ..	1,454	19	5				
MISCELLANEOUS.							
Haversacks, Office Contingencies ... ..	291	10	1				
Total Central Office Expenditure ... ..	£6,709	3	6		6,709	3	6
Total Cost of Census, 1904 ... ..	£12,219	19	10				

## COST PER SQUARE MILE, AND PER HEAD OF POPULATION.

Expenditure.	Amount.			Cost per Mile.		Cost per Head.	
	£	s.	d.	s.	d.	s.	d.
Field Expenditure ... ..	5,510	16	4	3	1-39	—	1-19
Central Office Expenditure ... ..	6,709	3	6	3	9-52	—	1-45
Total Cost ... ..	£12,219	19	10	6	10-91	—	2-64

## Conclusion.

In conclusion, the figures embodied in the numerous Tables, which we have now the pleasure to submit, have been arrived at after much careful scrutiny, and no effort has been spared to ensure the correctness of same, and to obtain statistics on every subject which would be of vital importance to the Colony. There are two distinct classes of statistics dealt with in this Report; the first are Aggregations, the second are Approximations. To the first belong the vital statistics, and they are more likely to be accurate, for they are the result of the aggregation as to Sex, Religion, Birthplace, Age, Degree of Education, Occupation, and whether afflicted with any Infirmity.

To the second class, that is Approximation, belong all the Agricultural Statistics, Live Stock, Industries, etc. For the accuracy of information supplied under these heads we are not in a position to vouch, but for the correct tabulation and compilation of the Returns submitted to Head Office everything possible has been done to place before you accurate tabulation of the information furnished by the inhabitants of this Colony, and whilst we have no reason to believe that there has been any wilful suppression or distortion of facts, the want of accurate knowledge on the part, both of the People and Enumerators, of what was required, may have impaired the correctness of the statistics under some of the numerous heads of information. Defects are inseparable from Census-taking.

One of the chief difficulties with which we have had to contend in connection with the work has been in the fact that the office has been merely temporary in character, and that we have had to select in a short time an entirely untrained force, with the exception of two or three of the Chief Officials, making it impossible to obtain experienced help in the time allowed for testing the merits of each individual engaged upon the work.

Men are selected, as a rule, to do important work by reason of ability and long experience, and organization is of slow growth. We have been compelled, therefore, in making up the staff of Enumerators and Tabulators, to engage hundreds of people about whose character and ability we have had but slight knowledge, and it would seem that if a permanent Census Bureau were authorised this difficulty would, to a large extent, be overcome.

There is, however, internal evidence that the vital statistics, which we look upon as the most important, are as complete and as accurate as they can possibly be made, and as this is the first Census of the Colony which has been taken on the lines of what may be termed a "Modern Census," and will form a basis for comparison in years to come, it has been our endeavour to make it as complete and exhaustive as possible.

While it is interesting to us to know that our Colony has increased in population during the last ten years, a very important feature of this Census will show the results of the enquiries concerning the Agricultural and Manufacturing Industries of the Colony to be very much below high water mark.

The task has proved of much greater magnitude than at first contemplated, and we desire to place on record that our labours in the organization and superintendence of all matters relating to the taking of the Census were made lighter than they otherwise would have been by the kind and willing co-operation of the General Manager of Railways, Chief Commissioner of Police, Civil Commissioner of Zululand, Officer Commanding His Majesty's Troops, Magistrates, and Others for invaluable aid, and also Mr. Edward Noble, our Secretary, who was placed in immediate charge of the temporary Staff engaged in the intricate work of Tabulation; and it affords us great pleasure to record, that in this important trust, he gave us the greatest satisfaction by the excellent way in which he discharged his onerous duties.

No one who has not gone into the details of the Tabulating arrangements can have the faintest conception of the vast amount of work, of the hundreds of thousands of figures that have to be entered, copied, checked, and re-checked, in order to arrive at the comparatively simple results required for publication.



These figures will never meet the public eye, and their very existence will be unknown beyond the precincts of the Census Office.

A small Staff sufficed for the preliminary work, but when, in April, 1904, the Returns came pouring in, the number of temporary Clerks was increased, with Mr. J. B. McCartney as Chief Clerk, who has rendered valuable and efficient service, not only in connection with the general work of the Head Office, but in the Construction and Tabulation of Tables, and we desire to thank him, and the other Officers of the Staff for their assistance, enabling us to present this explanatory Report at this early date.

We have the honour to be,

Your Excellency's most obedient Servants,

THOS. K. MURRAY,  
Census Commissioner.

W. J. O'BRIEN,  
T. R. BENNETT,  
HERBERT MILLER,  
A. N. PEARSON,  
W. JAS. CLARKE,  
D. F. FORSYTH, } Census Committee.

E. NOBLE, Secretary.

Town Hall,  
Pietermaritzburg,  
Natal.





