

INDEX

Note.—The paging indicated refers to particulars of output (normally Table V). Particulars of average prices, volume of production and exports and imports of similar goods are generally given in Tables VI—VIII in the same series.

	Page		Page
A			
Accoutrements, badges, etc. ...	193	Bathroom, etc., fittings (brass) ...	508
Accounting machines ...	236	Baths (porcelain, enamelled or other finish) ...	57
Accumulators ...	308	Batteries, electric ...	308
Adding machines ...	236	Bayonets, swords, etc. ...	204
Adzes ...	165	Bearings, ball and roller ...	238
Aeroplanes :—		Bedsteads and parts ...	89
Complete ...	405	Bells, electric ...	307
Engines for ...	405	Belt fasteners ...	119
Agricultural and horticultural appliances ...	90	Bicycles ...	373
Agricultural and horticultural implements ...	165	Bifurcated rivets ...	118
Agricultural machinery ...	234	Binders and reapers ...	234
Agricultural tractors ...	229	Bismuth, etc. ...	478
Air-filtering machinery ...	234	Black plates ...	76
Air and gas compressors and exhausters ...	234	Black sheets ...	30
Air guns ...	204	Blades, safety razor ...	180
Aluminium and aluminium alloys :—		Blades, saw ...	165
Castings ...	477	Blast furnace plant ...	235
Crude, in ingots, blocks, etc. ...	477	Bleaching, dyeing, printing and finishing machinery ...	231
Foil ...	477	Blooms, billets and slabs of steel ...	31
Hollow-ware ...	88	Board-making and paper-making machinery ...	236
Plates, sheets, bars, sections, tubes, etc. ...	477	Boats, ships, etc. ...	351
Wire... ...	147	Bobbins ...	231
Ambulances ...	370	Boilers and boiler-house plant ...	230
Anchors and grapnels ...	117	Boilers and cylinders, of copper ...	457
Anti-friction metal ...	478	Boilers, marine ...	240
Antimony and manufactures thereof ...	478	Boilers, washing and cooking, of cast iron ...	57
Arc lamps, searchlights, etc. ...	306	Bolts, hasps and hinges of metal ...	90
Arches, steel, for collieries ...	31	Bolts, nuts and screws :—	
Armour plates ...	32	Of brass ...	119
Arms and ordnance stores and appliances ...	238	Of copper ...	119
Art metal work :—		Of iron and steel ...	118
Of brass ...	508	Bonnets for motor cars ...	372
Of iron and steel ...	89	Bookbinding, etc., machines ...	233
Automatic cash registers ...	236	Book-keeping and billing machines... ..	236
Automatic slot machines ...	234	Boot eyelets ...	193
Axes, hatchets, adzes and matchets... ..	165	Boot protectors, heel tips, etc., of iron and steel ...	118
Axles :—		Boot and shoe-making machinery ...	237
For motor cars ...	371	Boring mills ...	232
For other road vehicles ...	431	Boxes, containers, etc., of tinplate... ..	88
For railway vehicles (see tyres and axles and wheels and axles).		Braid, thread, etc., of gold and silver ...	520
B			
Baby cars, folding, of steel ...	431	Brands, stamps, etc. ...	166
Badges, medals and regalia ...	520	Brass :—	
Bag and envelope-making machines ...	233	Art metal work ...	508
Bakers' and confectioners', including sweet-making machinery ...	235	Bolts, nuts and screws ...	119
Bakers' ovens ...	240	Castings ...	457
Ball bearings and parts thereof ...	238	Finished goods ...	508
Bar, brewery and distillery fittings (brass) ...	508	Fittings for lighting and heating apparatus ...	508
Barbed wire ...	146	Fittings for motor cars and chassis ...	508
Barrels, kegs and drums ...	88	Ingots ...	457
Basins, cast iron ...	57	Nails, tacks, rivets and washers ...	119
Bath chairs ...	431	Plates, sheet and strip ...	457
		Rods and sections ...	457
		Railway and tramway fittings ...	508
		Shapes and angles ...	457
		Sheet metal goods ...	90
		Ships' fittings ...	508

	Page		Page
Brass :—contd.		Catering equipment ...	89
Stampings, pressings and piercings ...	508	Cattle killers, mechanical ...	204
Tubes ...	457	Cement-making machinery ...	234
Unwrought ...	457	Centrifugal drying plant ...	234
Wire :—		Chain covers ...	372
In coils ...	147	Chain link fencing ...	147
Not in coils ...	457	Chains, iron and steel ...	117
Brewery, bar, and distillery fittings (brass) ...	508	Chains, steel transmission ...	117
Brewing and distilling machinery ...	234	Chain wheels, cranks and pedals for cycles ...	373
Brick-making machinery ...	234	Chassis for motor vehicles ...	370
Broaching machines ...	232	Chemical and gas machinery ...	235
Brushes, wire ...	147	Chronometers ...	534
Buckles ...	193	Chucks and other work holders ...	232
Builders' and cabinet-makers' goods of brass ...	508	Churns for butter making, etc. ...	235
Builders' ironmongery :—		Churns for conveyance of milk ...	89
Cast ...	58	Cigarette-making machines ...	237
Other ...	89	Cisterns :—	
Builders' tools ...	166	Cast iron ...	57
Bulbs for electric lamps ...	306	Wrought iron ...	88
Buttons of metal ...	193	Circular saws ...	165
C			
Cabinet-makers' goods :—		Clippers, horse ...	166
Of brass ...	508	Clocks ...	534
Of iron and steel ...	89	Clock cases and parts ...	534
Cable jointing materials and accessories ...	308	Clog irons, boot protectors, etc. ...	118
Cable-making machinery ...	234	Closures, metallic, for bottles, jars, etc. ...	89
Cables and ropes, wire ...	147	Coach screws ...	118
Cables and wire, telegraph and telephone ...	308	Coal covers, cast iron ...	58
Cables, chain ...	117	Coal-cutters ...	236
Cables, ships' ...	117	Cocks and valves other than for motor vehicles :—	
Cables, insulated ...	308	Of brass ...	508
Calculating machines ...	236	Of other materials ...	239
Canteen and cased cutlery ...	180	Coffin furniture (brass) ...	508
Canning machinery ...	235	Coil springs ...	118
Carbines and rifles ...	204	Collar pins ...	192
Carbons, electric ...	307	Colliery tubs, trams and trucks ...	416
Carburetters ...	371	Compacts, metal ...	520
Cardboard box and carton-making machinery ...	233	Compressors and exhausters, air and gas ...	234
Card clothing machinery ...	231	Concentrates, residues, etc., of copper, etc. ...	457
Carpenters' and joiners' tools ...	166	Concrete-mixing machinery ...	235
Carriages, carts, etc., for animal traction ...	431	Condensers, electric ...	308
Carriages, invalid ...	431	Condensers, steam ...	235
Carriages, railway ...	415	Conduits and fittings, electrical ...	135
Carving forks ...	180	Constructional engineering ...	240
Casements and window frames, metallic ...	239	Contractors' and light locomotives and parts thereof ...	229
Cases for watches and clocks ...	534	Control and switch gear, electrical... ..	306
Cash and deed boxes, etc., of iron and steel ...	88	Contract work, electrical ...	309
Cash registers ...	236	Converters and transformers, electrical ...	306
Cast iron goods (e.g., stoves, boilers, cisterns, baths, pipes, etc.) ...	57	Conveyers, telfers and transporters ...	233
Cast-iron hollow-ware ...	88	Cooking apparatus ...	57
Castings :—		Cooking boilers of cast iron ...	57
Aluminium ...	477	Copper :—	
Brass ...	457	Bolts, nuts and screws ...	119
Iron ...	58	Cylinders and boilers ...	457
Steel... ..	31, 58	Engineers' and mechanics' goods ...	457
Castings for road and drainage ...	58	Finished goods ...	457
Casting, etc., (work done for the trade) ...	58	Nails and tacks, rivets and washers ...	119
		Plates, sheet, strip, etc. ...	456
		Rods and sections ...	457
		Tubes ...	457
		Unwrought ...	456

	Page		Page
Healds and reeds	231	Iron and steel:— <i>contd.</i>	
Hearth furniture (including coal boxes) of iron and steel	89	Scrap bars	31
Hearth plates, etc., enamelled	89	Sheet bars	31
Heating and cooking apparatus:—		Structural work	240
Cast iron for coal, electricity, gas or liquid fuel	57	Tinplate bars	31
Electric	309	Wire... ..	146
Fittings for, of brass	508	Ironmongery, builders':—	
Sheet iron, enamelled or not	89	Cast	58
Sheet iron, ventilating, etc., plant	239	Other	89
Heavy edge tools	165	Irons, electric	309
Heavy oil engines	230		
Heel tips, boot protectors, etc.	118	J	
Hinges of metal	90	Jacquard cards	231
Hob nails, boot and shoe studs and spikes	118	Japanning, lacquering, enamelling, etc.	90
Hoists, cranes, etc.	233	Jewellery of gold, silver, platinum, etc.	520
Hollow-ware:—		Jobbing ironmongery and repair work	90
Aluminium	88	Joiners' and carpenters' tools	166
Cast iron	88	Joint boxes, electric	308
Domestic	88		
Enamelled	88	K	
Industrial	88	Kegs and drums of wrought iron and steel	88
Wrought iron and steel	88	Keys, locks, etc.	89
Hooks, fasteners, etc.	119	Knife sharpeners	180
Hooks and eyes	193	Knitting machinery	231
Hoop, baling and barrel	32	Knitting needles and pins	192
Hoop and strip, iron and steel	32	Knives (other than machine knives)	180
Horns, electric, for motor cars	371	Knives and blades, plated, etc.	520
Horse clippers	166	Knives, machine	166
Horse shoes	119		
Horse shoeing... ..	119	L	
Horticultural appliances	90	Labelling and packing machinery	236
Horticultural implements	165	Lace braid, etc., of gold and silver... ..	520
Hosiery and knitting machinery	231	Lace and net machinery	231
Hosiery needles:—		Lacing hooks	193
Bearded	192	Laminated springs	118
Latch	192	Lampholders of brass, for electric lighting	508
Hot water pipes of cast iron or steel	57	Lamps, for motor cars	371
Hubs for cycles	373	Lamps and fittings, of brass	508
Hydraulic machinery	235	Lamps, lanterns, etc.:—	
		Electric	307
I		Other	89
Ignition apparatus	306	Latches, etc.	89
Ingot moulds	58	Lathes	232
Ingots of steel	31	Laundering machinery	235
Insulated wire and cables	308	Lawn mowers	234
Insulating materials of mica, ebonite, etc.	309	Lead:—	
Internal combustion engines	230	Collapsible tubes	477
Invalid carriages and bath chairs	431	Foil	477
Invalid chairs	372	Manufactures	477
Iron and steel:—		Pig	477
Bars, rods, angles, shapes and sections:—		Pipes	477
Of iron	31	Sheet	477
Of steel	31	Leather working machines	237
Blooms, billets and slabs of steel... ..	31	Lifts and elevators	233
Castings	58	Lifting machinery	233
Ferro-alloys	17	Light steel tools	166
Girders, beams, joists and pillars... ..	31	Lighting accessories and fittings:—	
Hoop and strip	32	Of brass	508
Pig iron	17	Other	307
Pipes and fittings	57	Lighters, mechanical, complete and parts	90
Plates and sheets	32	Lighting appliances	239
Puddled bars	31	Listing, book-keeping and billing machines	236
Refined pig iron	31		

	Page		Page
Living wagons	371	Motor cycles and tricars:—	
Locks, padlocks, keys and latches	89	Complete	372
Locomotives and parts	229	Engines, for	372
Looms for weaving	231	Parts and accessories, for	372
		Repair work	390
M		Side-cars	372
Machine knives and shear blades	166	Motor road rollers	229
Machine tools (metal working)	232	Motors, electric	305
Magnesium, metallic	478	Motor vessels	351
Magnetos, ignition	306	Moulds, of metal	239
Magnets, permanent	166	Mudguards, for cycles	373
Mail carts and perambulators	431	Mudguards, for motor cycles	372
Malleable iron castings	58		
Manganese	478	N	
Mangling and wringing machines for domestic use	235	Nails:—	
Manhole covers, of iron and steel	58	Brass and copper	119
Manicure sets	180	Iron and steel	118
Marine boilers	240	Wire... ..	147
Marine engines	240	Nail cleaners and files	180
Matchets	165	Nail clippers	180
Mattocks, picks, etc.	165	Nail polishers	180
Mattresses, wire	89	Needles:—	
Measuring instruments, electrical	308	Crochet hooks	192
Mechanical cattle killers	204	Gramophone	192
Mechanical lighters, complete and parts	90	Hosiery	192
Mechanical power transmission plant	235	Knitting	192
Mechanicians' and engineers' goods, of copper and brass	508	Surgical	192
Medals, badges, and regalia	520	Other	192
Medical apparatus, electro	309	Net and lace machinery	231
Metal boxes and containers	88	Netting, wire	147
Metal buttons and studs	193	Newspaper, letterpress and lithographic machines	233
Metal casements and window frames	239	Nickel, and nickel alloys:—	
Metal doors and door frames	239	Manufactures	477
Metal furniture	89	Plates, sheets and strip	477
Metal moulds	239	Nuts and bolts (<i>see</i> bolts, nuts and screws).	
Metal smallwares (e.g., curtain hooks, thimbles, etc.)	193		
Metal working machinery	237	O	
Metallic closures for bottles, jars, etc.	89	Office machinery	236
Metallic furniture for offices and hospitals	89	Oil engines	230
Metallic tubing, flexible	135	Ordnance and arms, stores and appliances	238
Metallurgical furnace and appliances	235		
Meters:—		P	
Electricity	308	Packing and labelling machinery	236
Gas	239	Packing rings	239
Water	239	Padlocks, locks, latches, etc.	89
Milk churns	89	Paper fasteners and clips	193
Milking machines	235	Paper machine wires	147
Milling machines	232	Paper-making and board-making machinery	236
Mining machinery	236	Parachutes	405
Mining tools	166	Pendants for lighting, of brass	508
Motor bodies	371	Permanent magnets	166
Motor cars:—		Petrol and other light oil engines	230
Brass fittings for	508	Petrol tanks	372
Chains, transmission for	117	Pewterware	520
Chassis, complete for	370	Photo-engraving machines	233
Commercial... ..	369	Piano frames	58
Engines	371	Picks, mattocks, etc... ..	165
Goods vehicles	369	Pig iron	17
Private and taxi-cabs	369	Pig lead	477
Parts, and accessories, for	371	Pins	192
Repair work	390	Pipes and fittings (gas, water, etc.), of cast iron	57
Trailers, for	371	Pipes, lead	477

	Page		Page
Pipes, ventilators, ductwork, of sheet iron or steel	89	Refrigerators	237
Pistols and revolvers... ..	204	Refuse and sewage disposal machinery	237
Pistons and piston rings	239	Regalia, badges, medals, etc.	520
Planing machines	232	Reproducers, electrical	307
Plates and sheets :—		Residues, concentrates, etc., of copper, etc.	457
Aluminium	477	Revolvers	204
Brass	457	Rifles	204
Copper	456	Rivets and washers :—	
Iron and steel :—		Of brass	119
Galvanised	32	Of copper	119
Not coated	32	Of iron and steel	118
Tinned and terne	76	Road-making machinery	237
Nickel and nickel alloys	477	Road castings (e.g., manhole covers, etc.)	58
Zinc	477	Road rollers, and parts thereof	229
Plating or finishing of plated goods (work done for the trade)... ..	90	Rods :—	
Platinum :—		Brass and other copper alloys	457
Alloys and manufactures	498	Copper	457
In grain, ingot, bar or powder	498	Iron and steel	31
Jewellery	520	Roller bearings, etc.	238
Pliers, pincers and nippers	166	Rolling-mill machinery	237
Ploughs	234	Rolls for rolling mills	58
Pneumatic tools	236	Rope and cables, wire	147
Poultry appliances	89	Rubber works machinery	237
Press tools	166		
Presses, machine tools	232	S	
Pressure gauges	239	Saddlery hardware	119
Primary batteries	308	Saddles :—	
Prime movers and boilers	230	Cycle	373
Printers' sundries (wood and metal furniture, etc.)	239	Motor cycle... ..	372
Printing and bookbinding machines	233	Safes	89
Printing, finishing, etc., machinery, textile	231	Safety lamps, electric	306
Printing type	478	Safety pins	192
Projection lamps	306	Safety razors and parts	180
Pulleys and pulley wheels (metal)	239	Sail eyelets	193
Pumping engines	230	Sailing ships	351
Pumping machinery	230	Sanitary cast iron goods and appliances	57
Pumps	236	Sanitary and water appliances	239
Pumps, for cycles	373	Sanitary fittings of brass	508
Punching machines	232	Sawing machines	232
Push buttons and studs of metal	193	Saws and saw blades... ..	165
		Scientific instruments, electrical	309
R		Scissors and tailors' shears	180
Radiators for motor cars	371	Screws and nuts :—	
Radio-gramophones	307	Brass or copper	119
Rails, railway and tramway	32	Iron or steel	118
Railway carriages, wagons and trucks :—		Scythes	165
Parts and accessories	415	Searchlights, etc.	306
Wheels and axles, for	415	Secateurs, scissors, etc.	180
Railway and tramway :—		Sewage and refuse disposal machinery	237
Equipment and plant	239	Sewing machines	237
Fittings, of brass	508	Shackles, hooks, etc.	119
Locomotives	229	Shafts, etc., for carts, wagons, etc....	431
Material (e.g., rails, sleepers, wheels, tyres and axles, spikes, etc.)	32	Shaping machines	232
Motors, electric	305	Shear blades and machine knives	166
Rain-water pipes, cast iron or steel	57	Shearing, etc., machines	232
Ranges (cooking), of cast iron	57	Shears, sheep	166
Rasps and files	165	Shears, tailors'	180
Razors	180	Sheet bars, iron and steel	31
Reapers and binders	234	Sheet lead	477
Reeds and healds	231	Sheet metal work :—	
Refined pig-iron	31	Brass	90
Refrigerating machinery	237	Iron and steel	90
		Of other metals	90
		For motor cars	372

	Page		Page
Sheets, strip, circles, etc. (see plates and sheets).		Steam locomotives, rail	229
Ships, boats, etc. :—		Steam rollers	229
Motor	351	Steam vessels	351
Painting, plumbing, etc., work on	353	Steel :—	
Sailing	351	Arches for colliery and similar purposes	31
Steam	351	Bars, rods, angles, shapes and sections	31
War	351	Blooms, billets and slabs	31
Other	351	Castings	31
Ships' cables	117	Forgings	33
Ships' fittings (other than furniture)	351	Girders, beams, joists, etc.	31
Shock absorbers	372	Ingots	31
Shoe-making machinery	237	Pipes and fittings	57
Shoe nails and rivets... ..	118	Plates and sheets	32
Shovels and spades	165	Sheet bars	31
Shuttles	231	Special steel	31
Sickles	165	Steering wheels	372
Side-cars	372	Stereotyping and type-setting machines	233
Signalling gear and instruments, electric	308	Stocks and dies	166
Signs, electric	309	Stoneworking machinery	237
Signs, enamelled	89	Stoves, cast iron	57
Silver :—		Strip, iron and steel	32
Braid, thread, lace, etc.	520	Strong rooms and fittings	89
Jewellery	520	Structural work, iron and steel	240
Other manufactures	498	Sugar-making and refining machinery	237
Refined	498	Suit-cases, etc., of sheet iron and steel	88
Sinks, cast iron	57	Surface boxes, cast iron	58
Sleepers, railway, etc., of iron and steel	33	Surgical needles	192
Slide fasteners	193	Switchboards, electrical	306
Slot machines, automatic	234	Switchboard meters	308
Slotting machines	232	Switchgear, electrical	306
Small arms and parts	204	Swords, bayonets, etc.	204
Small-wares of metal	193		
Snap fasteners	193	T	
Soil pipes of cast iron and steel	57	Tablets and signs, enamelled	89
Solder, soft	477	Tacks of brass, copper, iron and steel 118,119	118,119
Soleplates, railway	33	Tailors' shears	180
Sound recording equipment	309	Tanks :—	
Spades and shovels	165	Cast iron	57
Spanners, etc.... ..	166	Wrought iron	88
Sparking plugs	371	Tanning and leather working machinery	237
Sparklets, sprinklers, etc., of brass... ..	508	Taxi-cabs	369
Spiegeleisen	17	Telegraph apparatus	307
Spikes, railway	33	Telegraph and telephone wires and cables	308
Spinning and twisting machinery, textile	231	Telephone apparatus... ..	307
Spoons and forks, plated, etc.	520	Telphers, conveyers and transporters	233
Sporting guns	204	Television apparatus	307
Springs :—		Terne plates and sheets	77
For ordnance, small arms, clocks, watches, motor cars, motor cycles and musical instruments	118	Textile machinery and accessories... ..	231
For locks and latches	118	Thimbles and other smallwares	193
Other :—		Thread, lace and braid, of gold and silver	520
Laminated	118	Threshers	234
Coil	118	Tie pins	192
Springing and seating	119	Tilting, rolling, etc. (work done for the trade)	33
Staircases, iron or steel	240	Tin :—	
Stamps, brands and dies	166	Blocks, ingots, bars and slabs	477
Stampings and pressings of brass	508	Foil	477
Standards, fencing	118	Manufactures	477
Staples, wire	147	Solder	477
Starting and controlling gear for electric motors	306	Tin box and can-making machines... ..	232
Steam engines and turbines	230	Tin boxes and containers	88
Steam and water fittings, of brass	508		

	<i>Page</i>
Tin openers	166
Tinned plates and sheets	77
Tinning (work done for the trade)	90
Tinplate hollow-ware	88
Tinplate bars	31
Tobacco and cigarette-making machinery	237
Tools and implements :—	
Light steel	166
Machine (metal working)	232
Portable electric	309
Pneumatic	236
Press	166
Other	166
Torches, electric	306
Totalisator apparatus	309
Trackless trolley vehicles	416
Tractors and parts	229
Traffic signals, electric	308
Trailers	371
Tramcars and parts	416
Tramway equipment, etc. (<i>see</i> Rail- and tramway).	
Transformers and converters, electrical	306
Transmission chains, of steel	117
Transporters, conveyers and telfers	233
Trellis, etc., of iron and steel	118
Tricars	372
Tricycles	373
Trolley vehicles, trackless	416
Trucks and trollies, hand	431
Trucks and wagons, railway	415
Trunks, etc., of sheet iron and steel... ..	88
Tube-making machinery	238
Tubes :—	
Brass and other alloys	457
Cased, iron and steel	135
Close-joint, iron and steel	135
Copper	457
Electric conduit	135
Fittings for wrought tubes	135
Flexible metallic	135
Hoop and strip for	32
Iron and steel, wrought	135
Lead	477
Welded wrought iron and steel	135
Weldless wrought iron and steel, drawn	135
Tubs, trams and trucks, colliery	416
Tungsten, etc.	478
Turbines and other rotary engines (steam and water)	230
Twisting machinery, textile	231
Typesetting and printing machines... ..	233
Typewriters	236
Typewriters, reconditioned	238
Type metal	478
Tyres and axles, railway, etc.	33
U	
Uninsulated electric wire	146
V	
Vacuum cleaners, electric	306
Valves and cocks other than for motor vehicles :—	
Of brass	508
Of other materials	239

	<i>Page</i>
Valves, wireless	308
Vats, tanks and cisterns of wrought iron and steel	88
Ventilating appliances and plant	239
Ventilators, pipes, ductwork, cowls, etc., of sheet iron and steel	89
W	
Wagons, carts, etc., for animal traction	431
Wagons, railway	415
War vessels	351
Warning signals, electric	371
Washers and rivets :—	
Of brass	119
Of copper	119
Of iron and steel	118
Washing boilers, of cast iron	57
Watches	534
Watch cases and parts	534
Water and sanitary appliances	239
Water meters and parts	239
Water pipes	57
Water softening plant	239
Water supply, fittings for	508
Water turbines and parts	230
Waterworks equipment	238
Weaving machinery	231
Weighing machinery	238
Welding machinery	238
Wheelbarrows	431
Wheels and axles, railway, complete	415
Wheels and parts, for motor cars	371
Wheels and parts, for motor cycles... ..	372
Wheels and parts, for other road vehicles	431
Wheels, rims and spokes for cycles... ..	373
Wheels, rims and spokes, for other road vehicles	431
Wheelwrighting	119
White metal alloys :—	
Anti-friction	478
Type metal	478
Other white metal alloys	478
Manufactures	478
Wind screen wipers	372
Wind screens and shields for motor cars	371
Winding machinery, (mining)	236
Window frames of metal	239
Wire :—	
Aluminium	14
Barbed	146
Brass	147
Manufactures of	147
Copper	147
Manufactures of	147
Fencing	146
Insulated	308
Iron and steel	146
Manufactures of	147
Telegraph and telephone	308
Uninsulated electric	146
Wire brushes	147
Wire cables and rope	147
Wire cloth	147
Wire mattresses	89
Wire nails and staples	147

	<i>Page</i>
Wire netting	147
Wire rods	31
Wire making machinery	238
Wireless apparatus	307
Wireless valves	308
Wood-working machinery	238
Wrenches, spanners, etc.	166
Wringing and mangling machines, domestic	235
Wrought iron and steel tubes	135
X	
X-ray apparatus	309
Z	
Zinc :—	
Crude, cakes, slabs, etc.	477
Sheets, strip, plates, etc.	477
Manufactures	477
Zipp fasteners	193

A Statement of the
**TRADE OF THE
UNITED KINGDOM**

with
**BRITISH COUNTRIES AND FOREIGN
COUNTRIES**

Is issued Annually in Four Volumes
and Provides Comparisons with the
Four Years Immediately Preceding
that to which it Relates

The volumes, which may be purchased separately,
comprise—

- (I) Summary of Import and Export Trade.
- (II) Detailed Statements respecting Articles Imported
and Re-exported.
- (III) Detailed Tables showing Exports of Produce
and Manufactures of the United Kingdom to
principal and other Countries.
- (IV) Trade at individual Ports and with individual
Countries, Value of Imports from and Exports
to each Country, Stocks of principal articles
remaining in bonded warehouses, &c.

The complete statement for 1937 is available at the following
prices:—

Vol. I.	15s. (15s. 6d.)
Vol. II.	£1 12s. 6d. (£1 13s. 2d.)
Vol. III.	£1 (£1 os. 6d.)
Vol. IV.	£1 5s. (£1 5s. 7d.)

Prices are net, those in brackets include postage.

*Enquiry for particulars of
earlier years is invited by*

HIS MAJESTY'S STATIONERY OFFICE

London W.C.2: York House, Kingsway
Edinburgh 2: 120 George Street Manchester 1: 26 York Street
Cardiff: 1 St. Andrew's Crescent Belfast: 80 Chichester Street
or through any bookseller

The Guide to Current Official Statistics

It is the aim of the Permanent Consultative Committee on Official Statistics, in issuing this Annual Guide, to direct the enquirer to all current official publications that contain statistics bearing on his subject, and especially to inform him of the nature of the statistics he will find in the volume to which he is referred. The Guide embraces two distinct sections: (i) a Subject Index and (ii) a List of Publications. It covers the whole of the statistical information contained in publications issued by Government Departments in Great Britain and Northern Ireland and is a work of obvious utility.

Volume Three	1924	1s. net,	1s. 4d. post free
Four	1925	1s.	1s. 4d.
Five	1926	1s.	1s. 4d.
Six	1927	1s.	1s. 4d.
Seven	1928	1s.	1s. 5d.
Eight	1929	1s.	1s. 5d.
Nine	1930	1s.	1s. 5d.
Eleven	1932	1s.	1s. 5d.
Thirteen	1934	1s.	1s. 5d.
Fourteen	1935	1s.	1s. 5d.
Fifteen	1936	1s.	1s. 5d.
Sixteen	1937	1s.	1s. 5d.

(Volumes one, two, ten and twelve are out of print)

His Majesty's Stationery Office

London W.C.2: York House, Kingsway

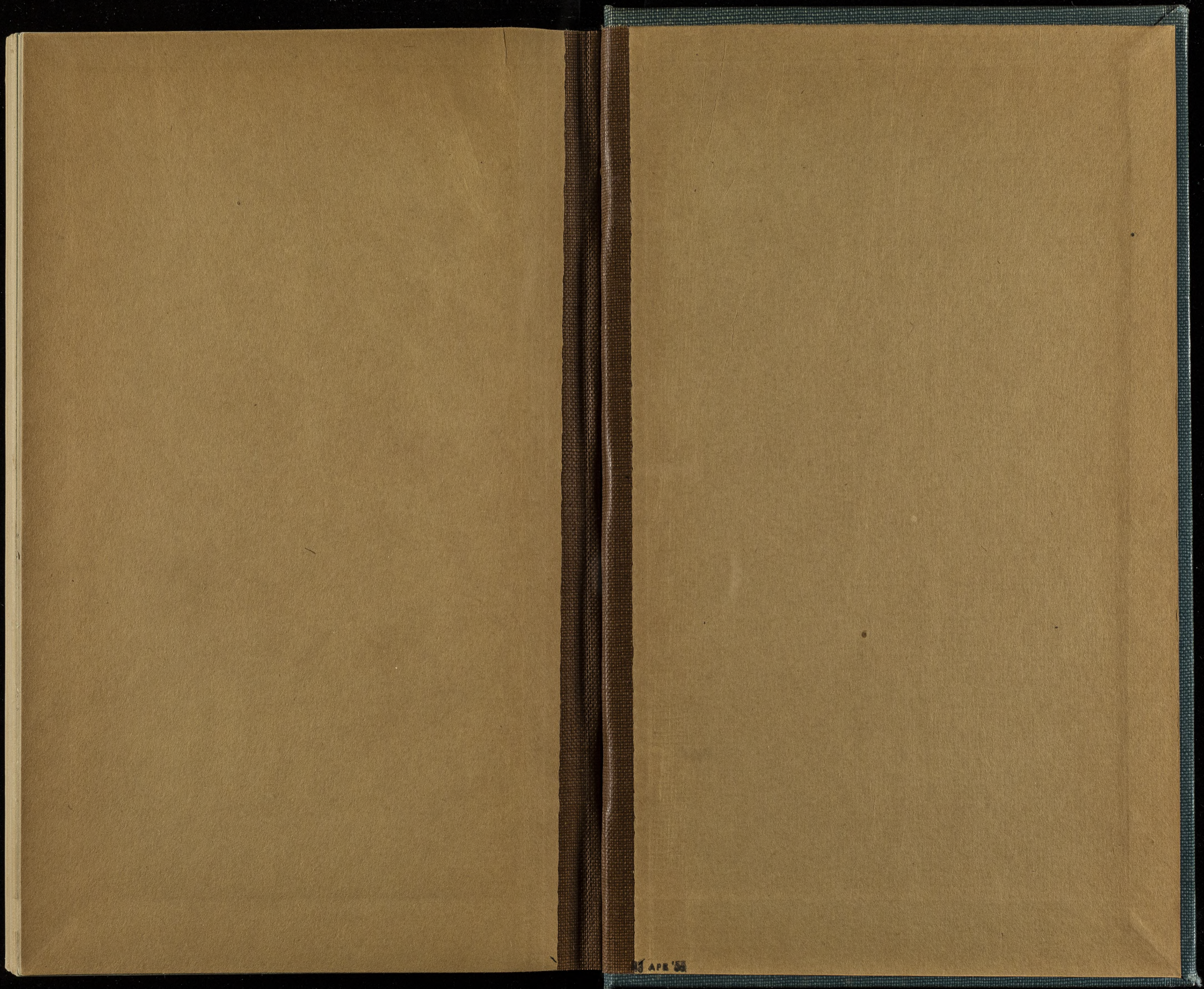
Edinburgh 2: 120 George Street

Manchester 1: 26 York Street

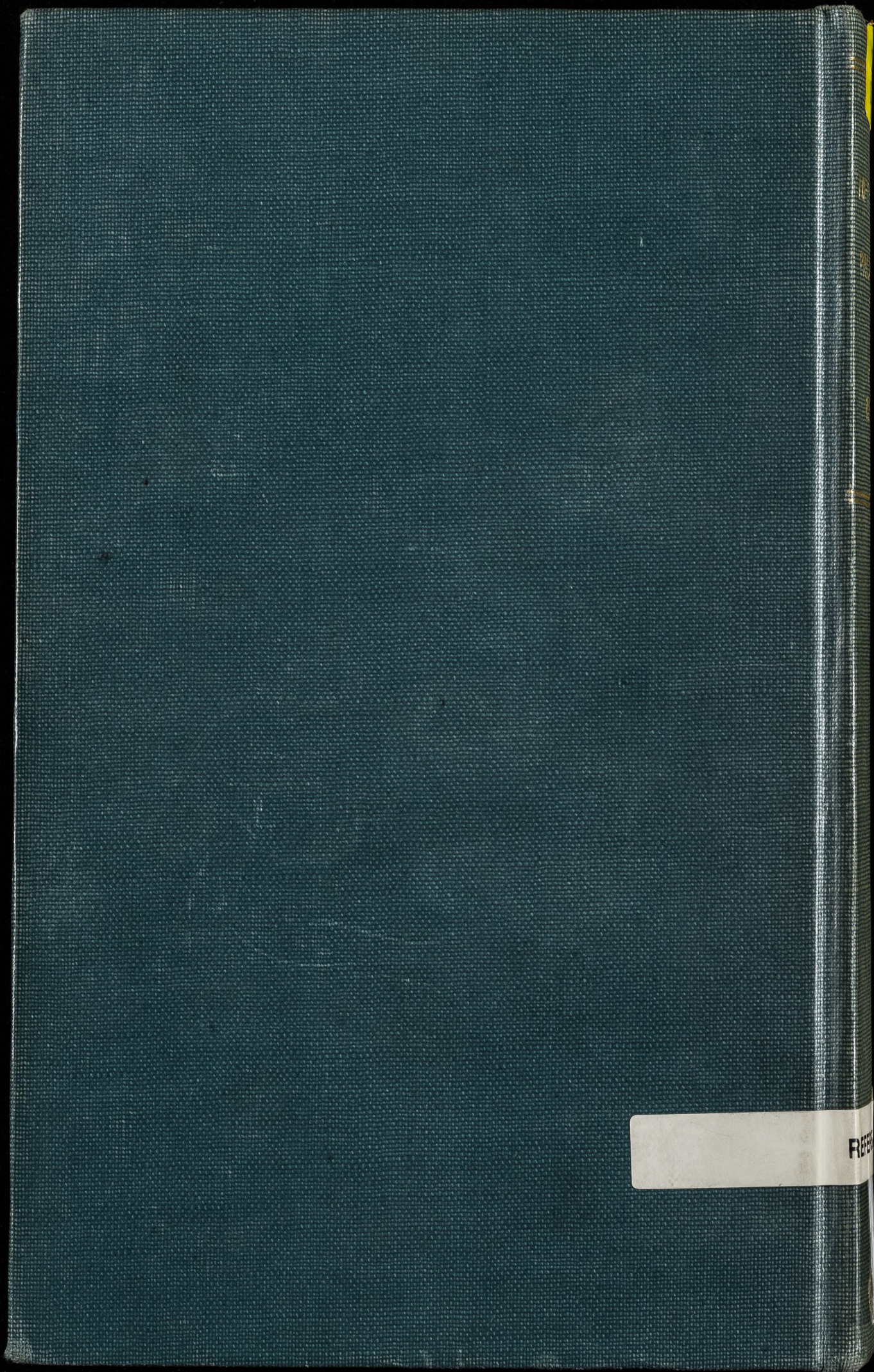
Cardiff: 1 St. Andrew's Crescent

Belfast: 80 Chichester Street

or through any bookseller



APR '58



R
E